

An aerial photograph of a multi-lane highway with several cars. A semi-transparent dark grey rectangle is overlaid on the left side of the image, containing the title and speaker information. In the upper right quadrant, a network of white lines is overlaid on the landscape, forming a series of interconnected triangles and polygons, representing geospatial data or a network map.

# Trusted Geospatial Data

**Sallie Payne Snell**  
**Secretary General & Executive Director**



# CONNECTING YOU TO MAPS, GEOSPATIAL AND LAND INFORMATION FOR EUROPE



#MAPSFOREUROPE

**60+**   **members** from the whole of geographical Europe

## EUROGEOGRAPHICS ACTIVITIES

Well-established network for sharing knowledge, expertise and access to data



Sharing experiences and best practice



Representing our members interests



Fostering use and re-use of public sector geo-information

## MAPS, CADASTRE, AND MORE

Our members provide data to help protect people, the planet and so much more



Environmental monitoring & management



Real-time data for pandemic response



Smarter, sustainable agriculture



Cleaner, safer, intelligent transport



Emergency responses



Aerial survey

## TRUST & RELIABILITY

Our members empower society with trusted geospatial services



Trusted daily everywhere for secure ownership transactions, diligent policy elaboration and monitoring



Relied on by European institutions and UN, governments, businesses and citizens



Registered on the EU Transparency Register and bound by its code of conduct



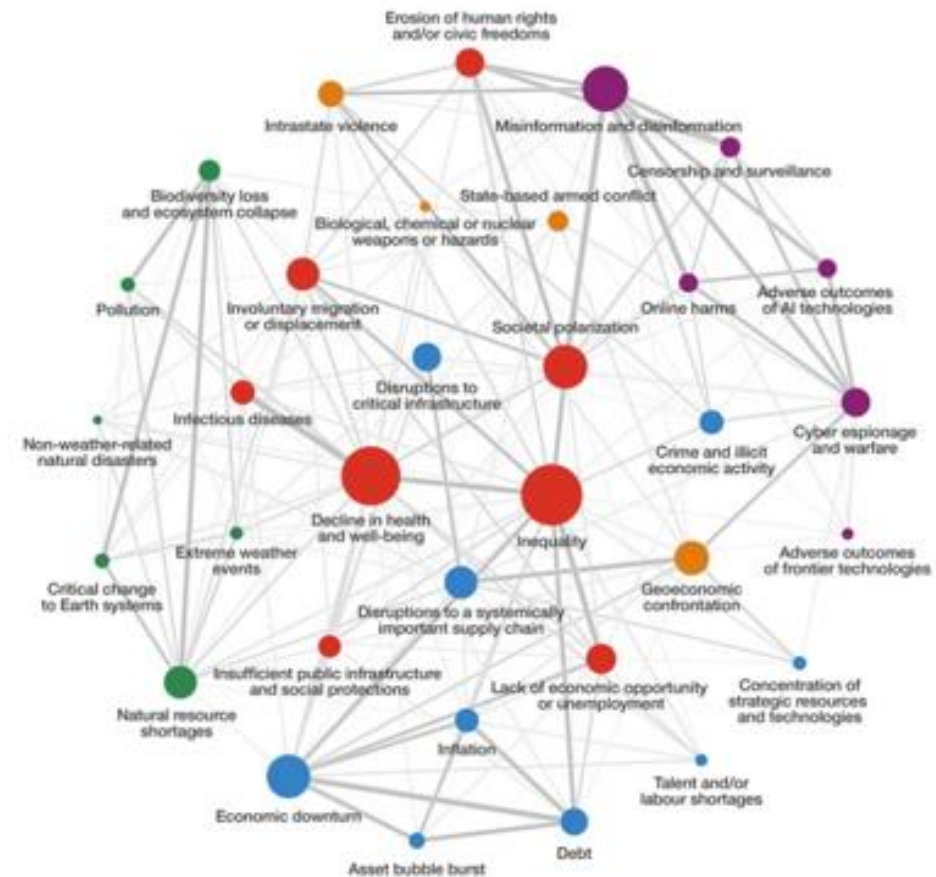
### Outlook for 2025: Top 5 risks for the current year



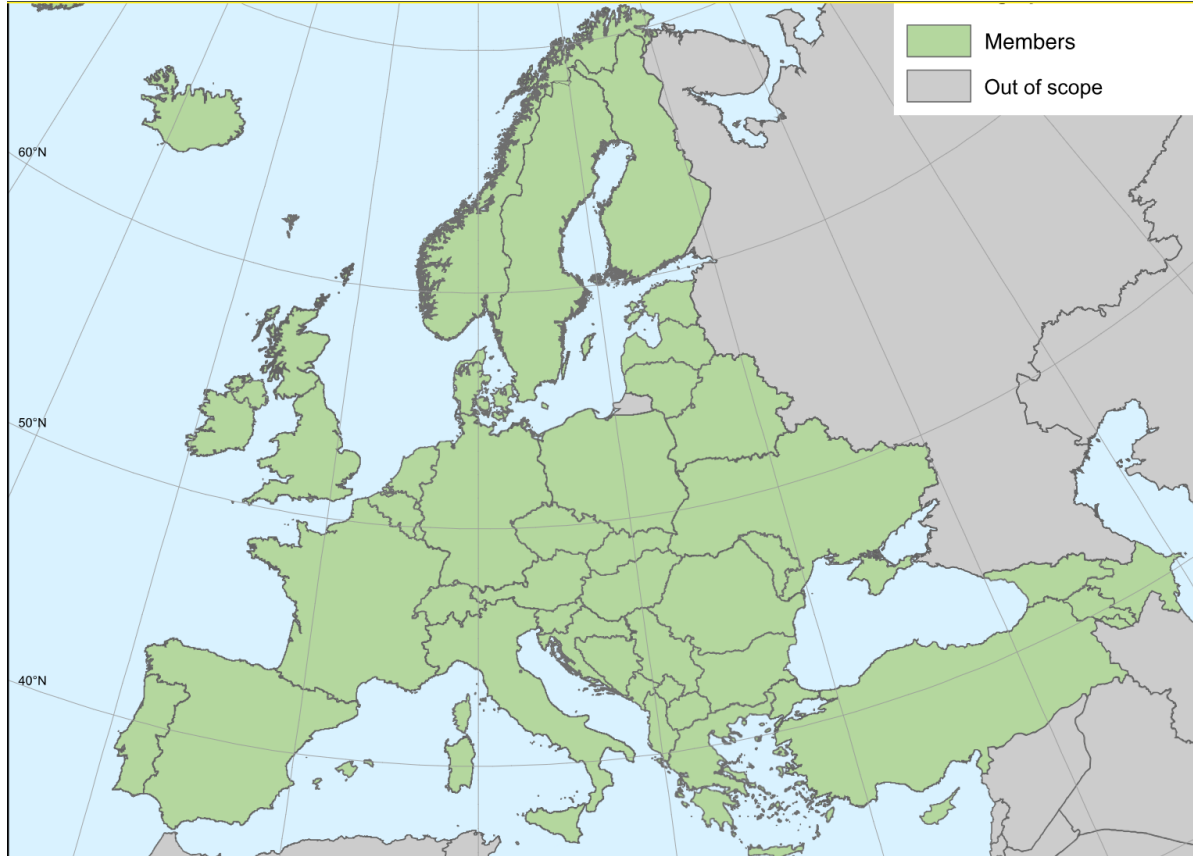
Source: Global Risks Report 2025, World Economic Forum

### Global Risks Report 2025

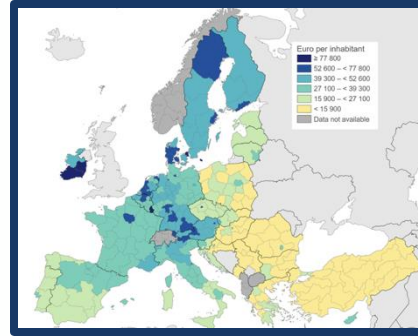
## Global risks landscape: an interconnections map





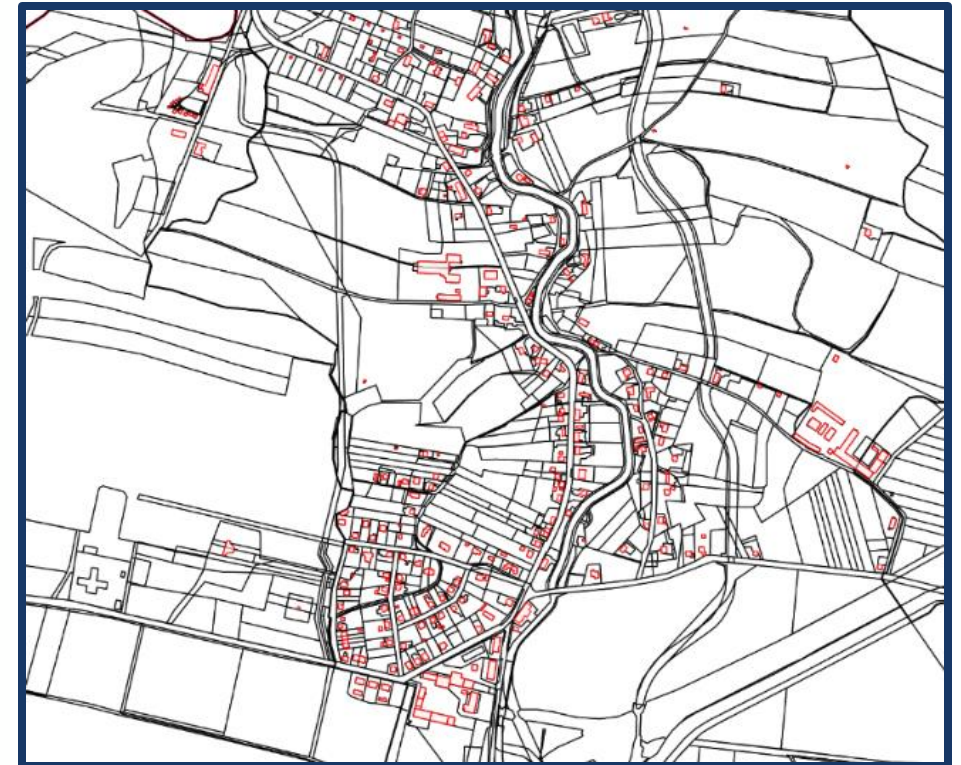






*“The biggest benefit of our relationship with EuroGeographics is collaboration in establishing high quality European scaled geospatial data availability, which includes fostering partnerships between the statistical and geospatial decision makers and data integration work at national and European level.”*

**Eurostat**



*“High-quality authoritative transport network data at pan-European level is crucial to support the DG MOVE’s work around Military Mobility, recharging infrastructure for electric vehicles, and other policy areas.”*

## DG MOVE



### The Action Plan on Military Mobility (2022-2026):



Investing in dual-use transport infrastructure along the trans-European transport network.



Accelerating, digitalising and streamlining national procedures and processes.

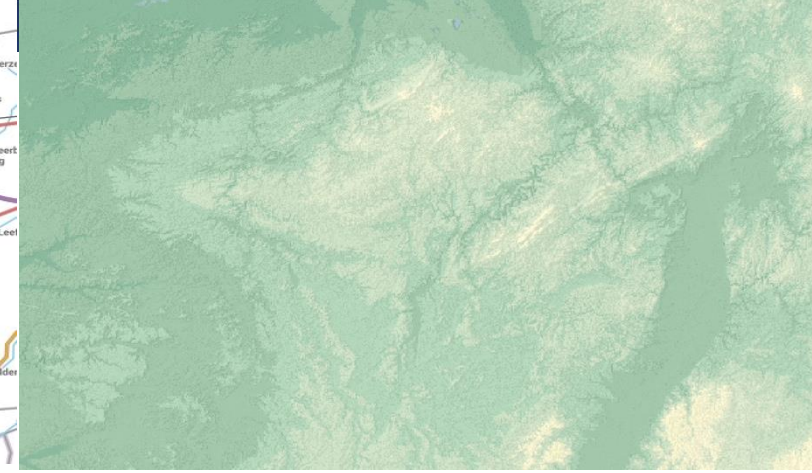
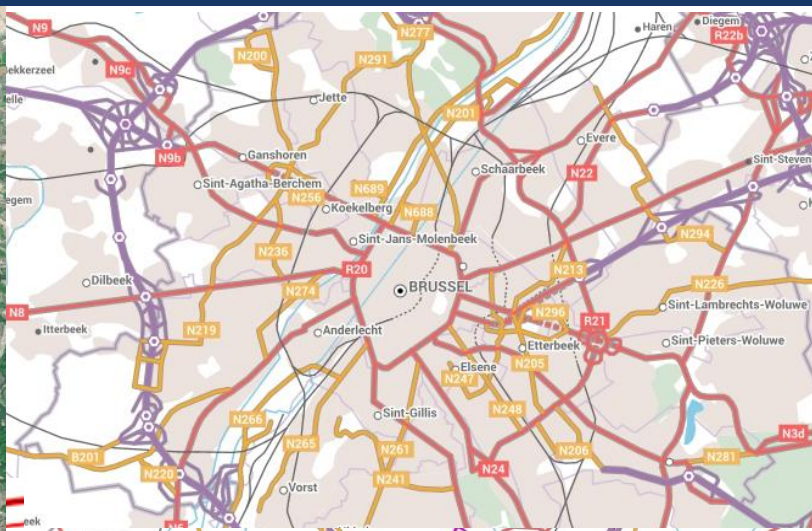


Strengthening the preparedness and resilience of transport infrastructure.

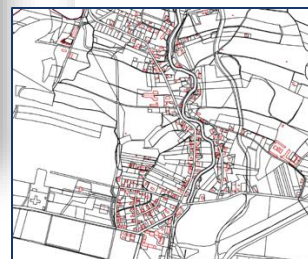
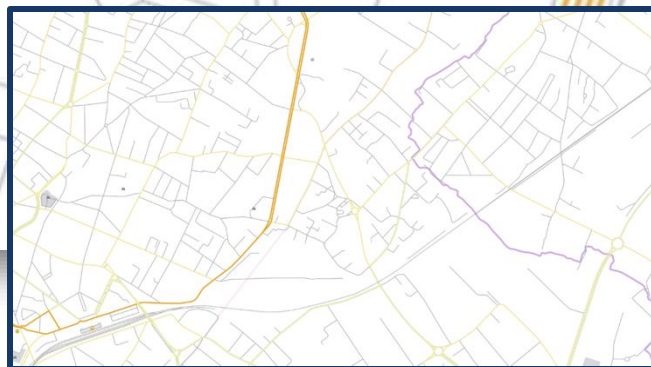
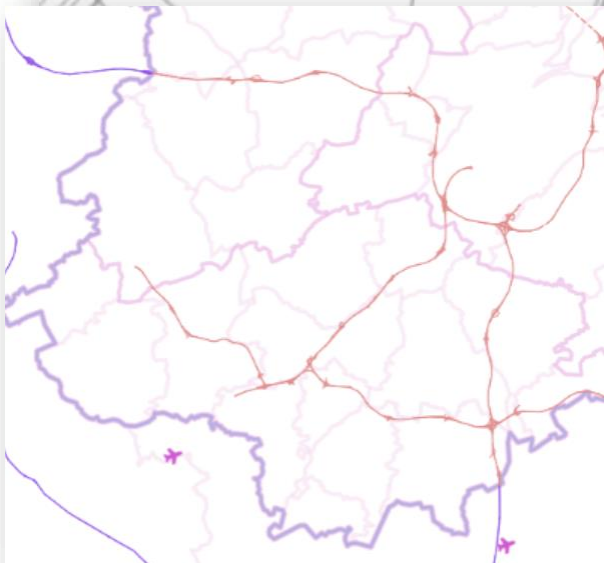
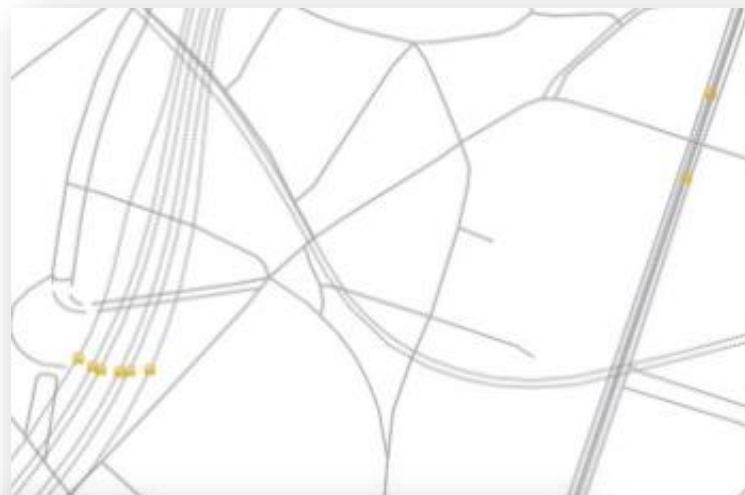


Enhancing cooperation with NATO and key partners.









Co-funded by  
the European Union

Digital Europe Programme  
Grant Agreement No 101100625







# Thank you

[Sallie.payne@eurogeographics.org](mailto:Sallie.payne@eurogeographics.org)



Digital Europe Programme  
Grant Agreement No 101100625