

kadaster



Paula Dijkstra  
24 June 2025, Brussels  
UNGGIM Europe

# A global (virtual) hub for Effective Land Administration



## A global (virtual) hub for Effective Land Administration

- To accelerate implementation of frameworks, models and approaches
- To help countries manage land rights and advance the 2030 Agenda for Sustainable Development

Knowledge  
exchange

Capacity building

Technical support





# Kadaster International

We support our partners and sister organisations internationally with expertise in establishing, exploiting and improving **land administration** and **geo-information** with an unique **Government-to-government approach (G2G)**.

We empower citizens and institutions, and contribute to SDGs in the areas of poverty reduction, women's rights, social justice, food security and climate.





# Kadaster International: 30 years, 200 projects, 75 countries

Committed to support transparent, accessible, and efficient land administration systems as a foundation for inclusive economic growth and tenure security

## Projects

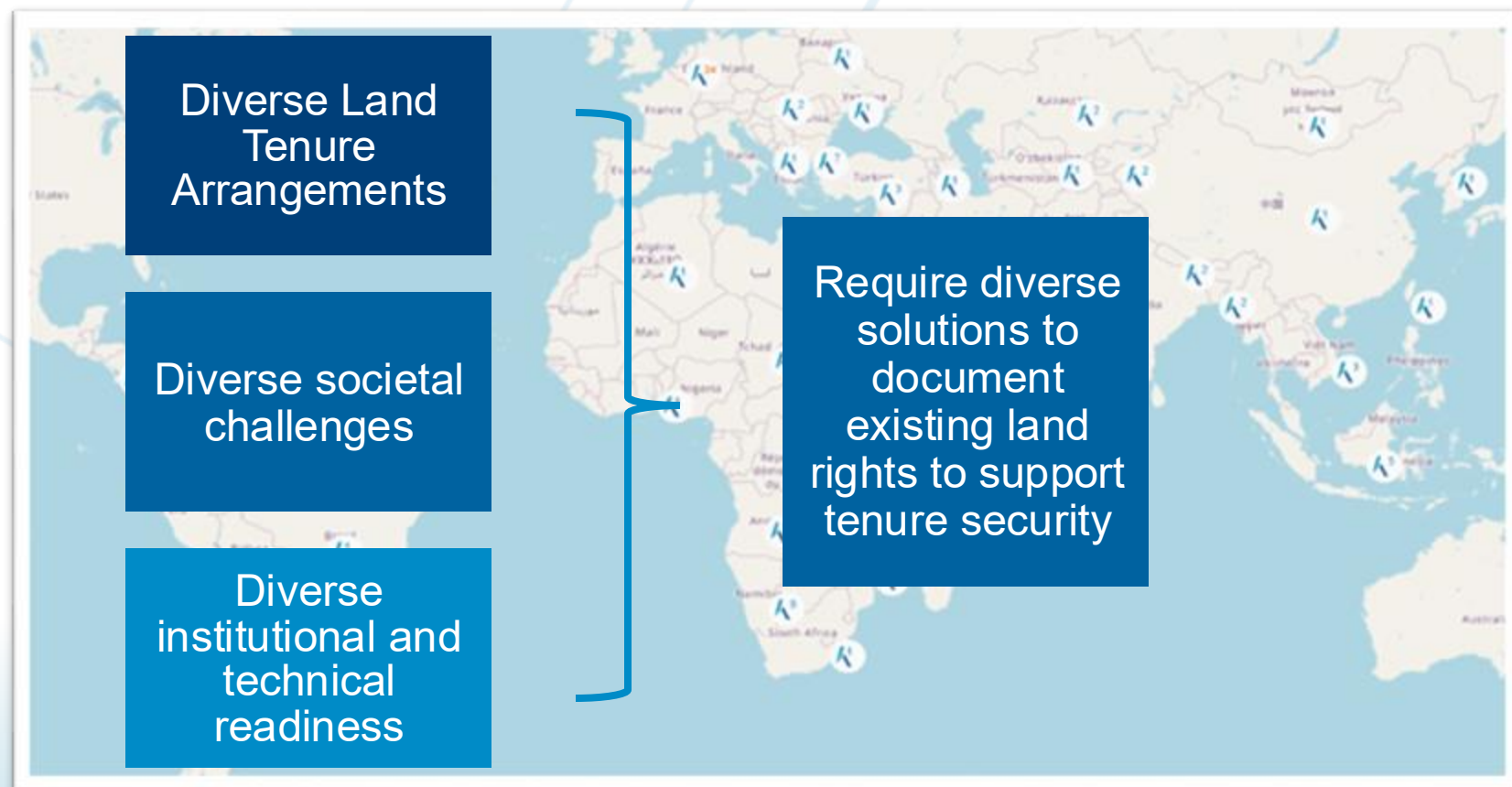
- Sharing Best Practices
- Capacity Building
- Technical Assistance

## Knowledge Exchange

- UNGGIM FELA
- Land Administration Domain Model
- Fit For Purpose Land Administration

## International Representation

- Active members FIG, UNGGIM EGLAM, OGC





**Only a small number of mostly high-income countries have complete, inclusive, and up-to-date land administration systems**

**Majority of the global population still lacks formally recognized land rights**





# Majority of the global population still lacks formally recognized land rights

World Bank:

70% of the global population lacks secure rights over their land



## How stronger land systems can spur economic growth and jobs



The World Bank  
2,439,774 followers



1. **Create jobs and growth.** As World Bank Group President Ajay Banga **outlined** in a recent Financial Times op-ed, better land rules make it easier to do business. Streamlining access to property ownership can **support** entrepreneurship, innovation, and expansion, facilitating the creation of jobs and new business ventures. Registered rights can also **enable** landowners to reinvest their wealth and seek alternative livelihoods, which can lead to higher-skilled employment.
2. **Unlock private capital.** With registered property rights and transparent rules, people can use their land as collateral to access private credit, which can then be invested in their businesses, homes, and livelihoods. In urban areas in particular, digital land records can **boost** credit access by 10.5 percent on average, rising to 15 percent over time.
3. **Fund essential infrastructure and services.** Land and property taxes are underutilized in low-income countries, where they **generate** just 0.6 percent of gross domestic product, compared to 2.2 percent in industrialized nations. By updating land records and making valuation systems more efficient, land systems can provide a stable source of government revenue and public funding to invest in essential infrastructure and services.
4. **Scale up energy access.** Demand for critical minerals is expected to **rise** by over 450 percent by 2050 compared to 2018. More than half of these resources may be **located** on or near Indigenous lands, yet only about half of Indigenous land rights are formally **recognized**. We must prioritize securing existing land rights to avoid land disputes, foster sustainable investments, and ensure that local landholders can contribute to—and benefit from—increased energy access.
5. **Help cities manage urban growth.** By 2050, two out of three people globally will be in cities and need places to live, work, and access green spaces. Accurate land systems can ensure that people's homes and public spaces are protected and identify land that's available for infrastructure or housing development. These databases can also be linked to disaster risk information to help identify at-risk areas, conduct risk-sensitive planning and zoning, and provide assistance after disasters.
6. **Support women and food security.** Improving women's access to productive resources, including land, can **enable** them to produce 20 to 30 percent more food. This may not only increase national agricultural outputs by as much as 4 percent, but could also have positive impacts on children's nutrition, health, and education.

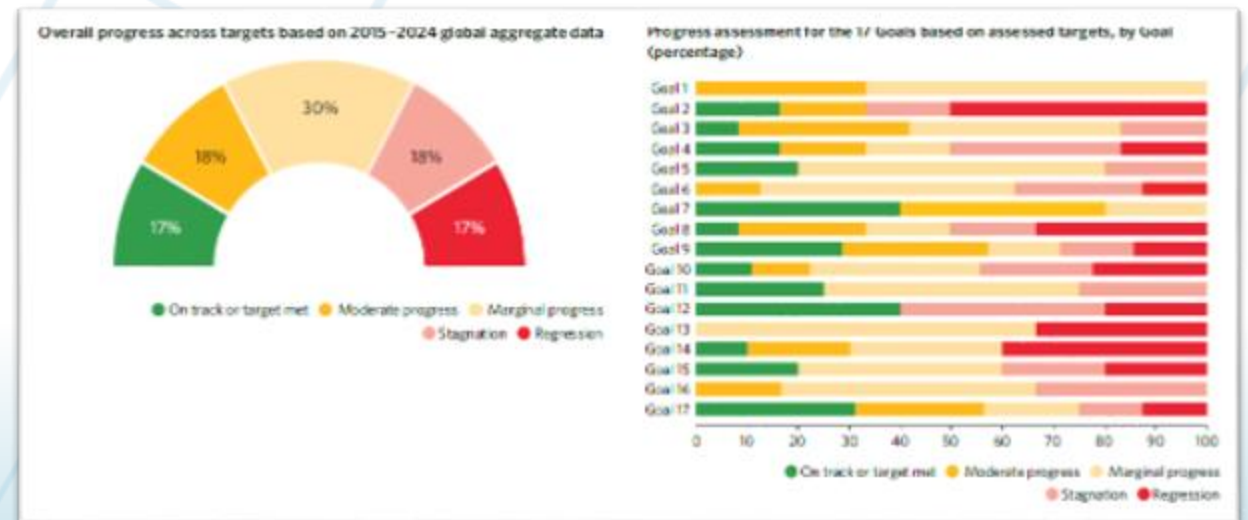


# Majority of the global population still lacks formally recognized land rights

## SDGs

Severly off track, including

- 1.4.2: Proportion of total adult population with secure tenure rights to land
- 5.a.1/2: Women's access to land





# Majority of the global population still lacks formally recognized land rights

## UN Habitat – Global Land Tool Network:

- Nearly 1.4 billion adults from developing regions outside formal land markets and without legal ways to protect their rights
- 43% adult population has access to legal documents to secure tenure rights
- Only 24% of women hold legal documents

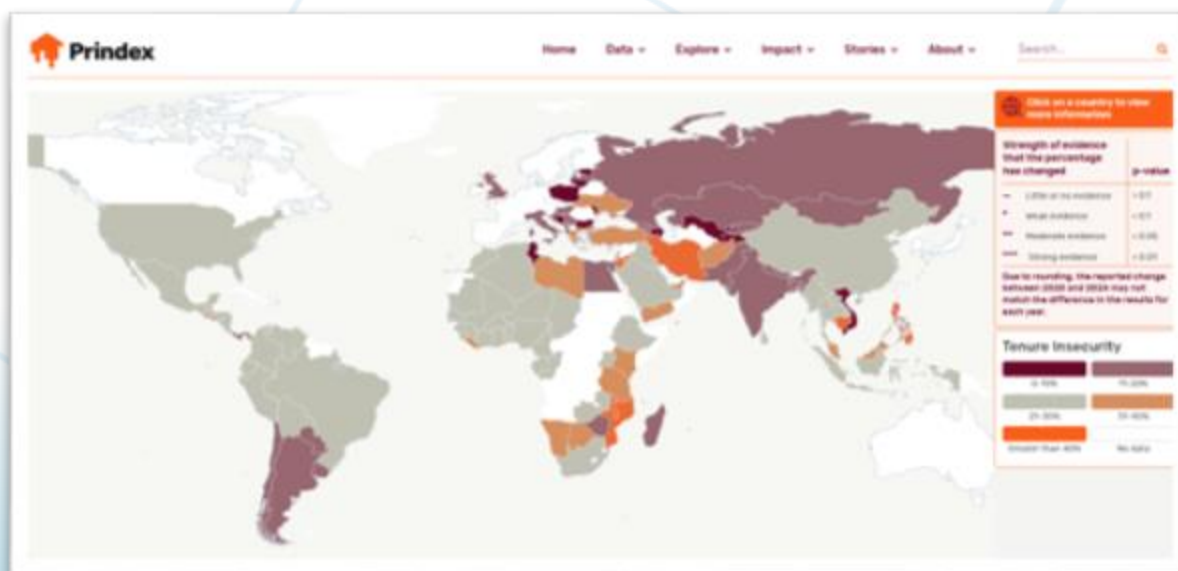
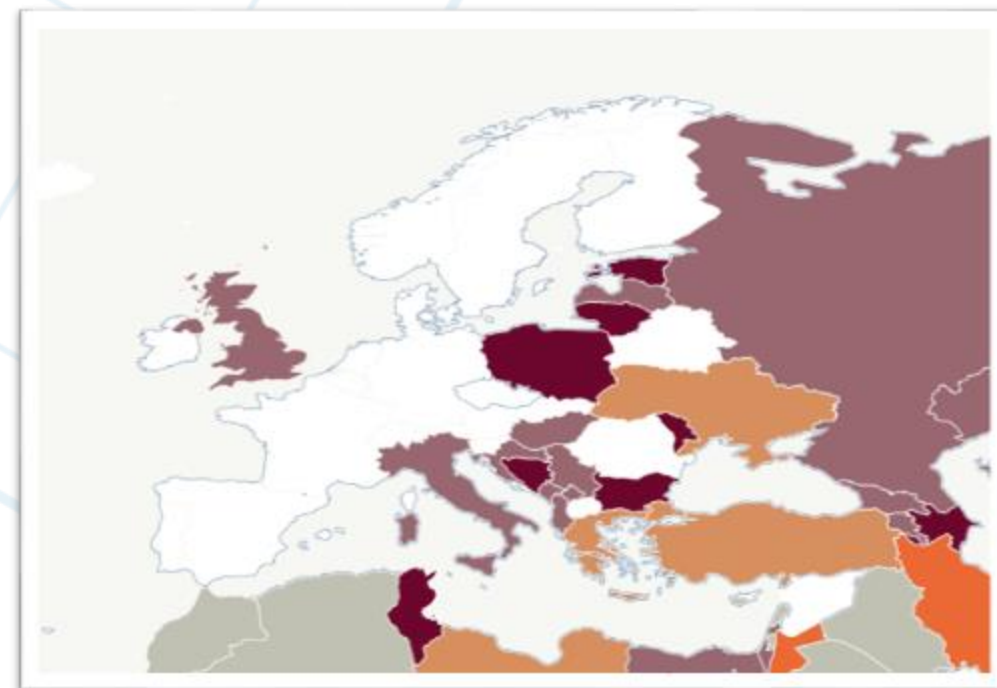




# Majority of the global population still lacks formally recognized land rights

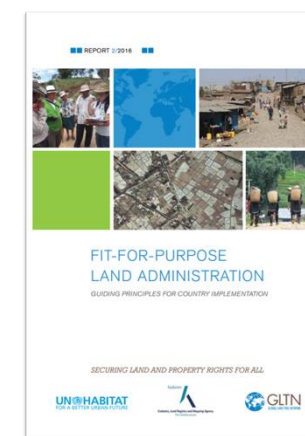
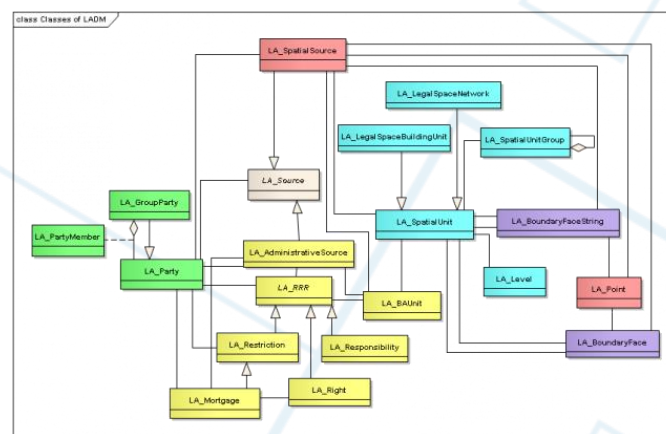
## Property Right Index / Prindex 2024:

1.1 billion adults across the 108 countries—23% of the adult population—feel insecure about their land or property rights





# Strategic Response: Developed Frameworks, Models & Approaches to support sustainable acceleration of our efforts



# FELA: Development and implementation



UN-GGIM

United Nations Committee of Experts on  
Global Geospatial Information Management

Expert Group on  
Land Administration and Management

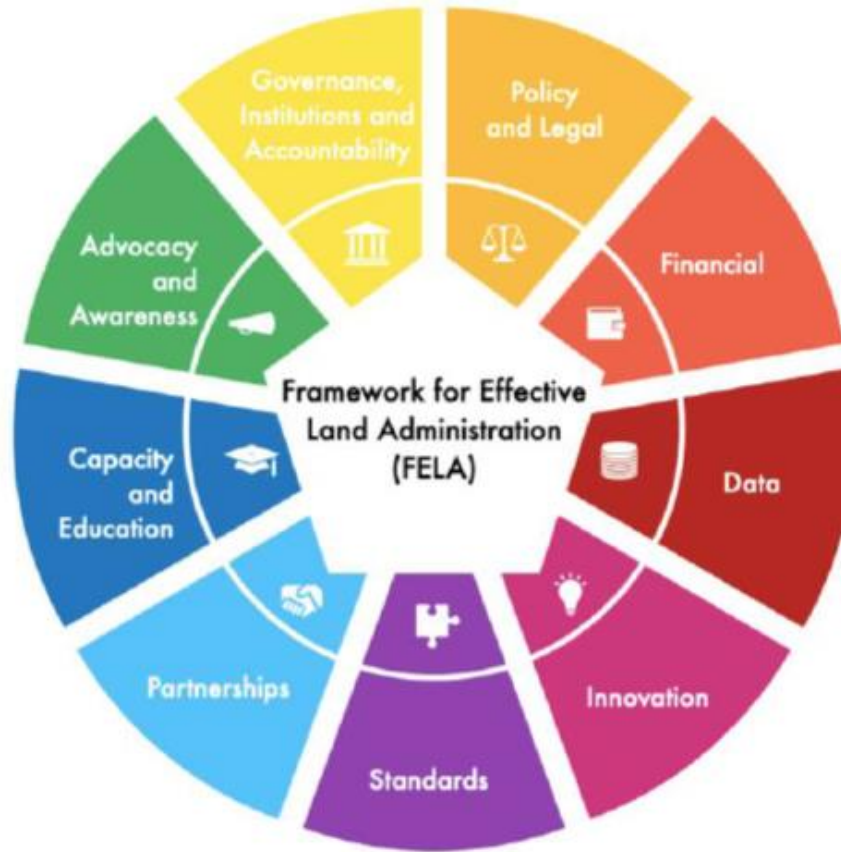
*Positioning geospatial information to address global challenges*

[ggim.un.org](http://ggim.un.org)



# FELA

## Framework for Effective Land Administration

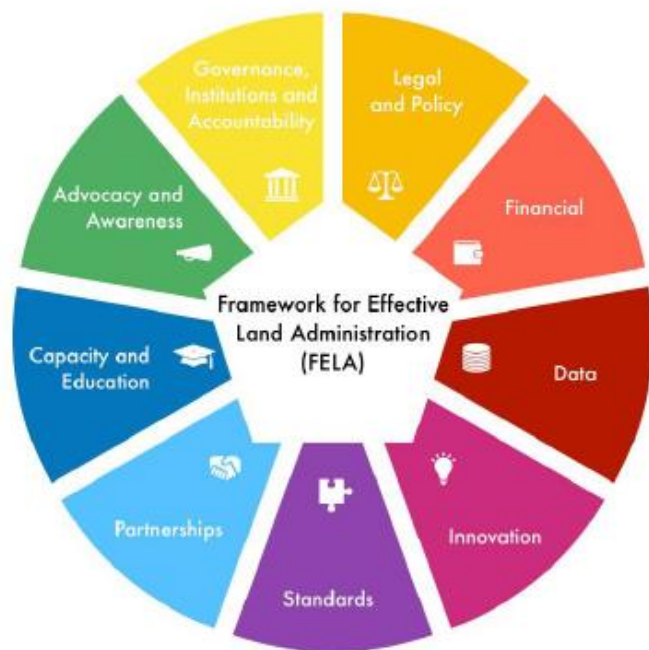


The Framework for Effective Land Administration (FELA), acts as an overarching policy guide, which provides a reference for Member States when developing, renewing, reforming, strengthening, modernizing, or monitoring land administration.

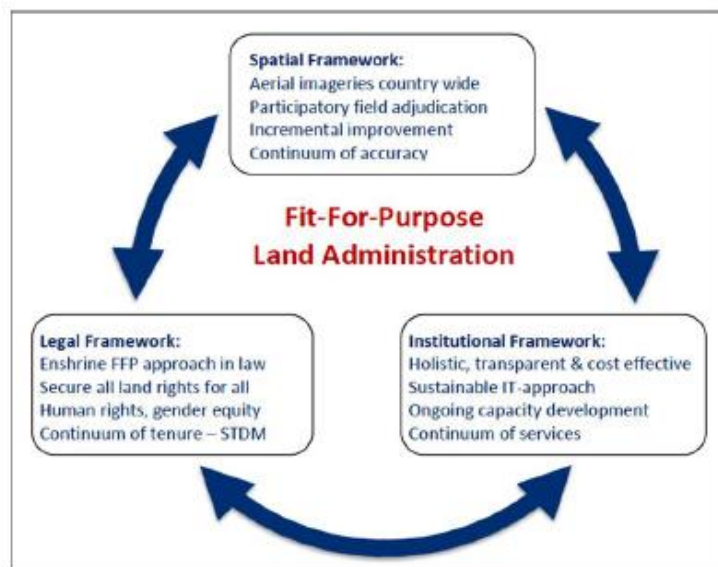
FELA with nine pathways aligned to the nine strategic pathways of the IGIF, seeks to provide the reference and guidance for Member States with regard to administering the relationships between people and land, and when establishing, strengthening, co-ordinating and monitoring their land administration nationally or sub-nationally.







Guidance

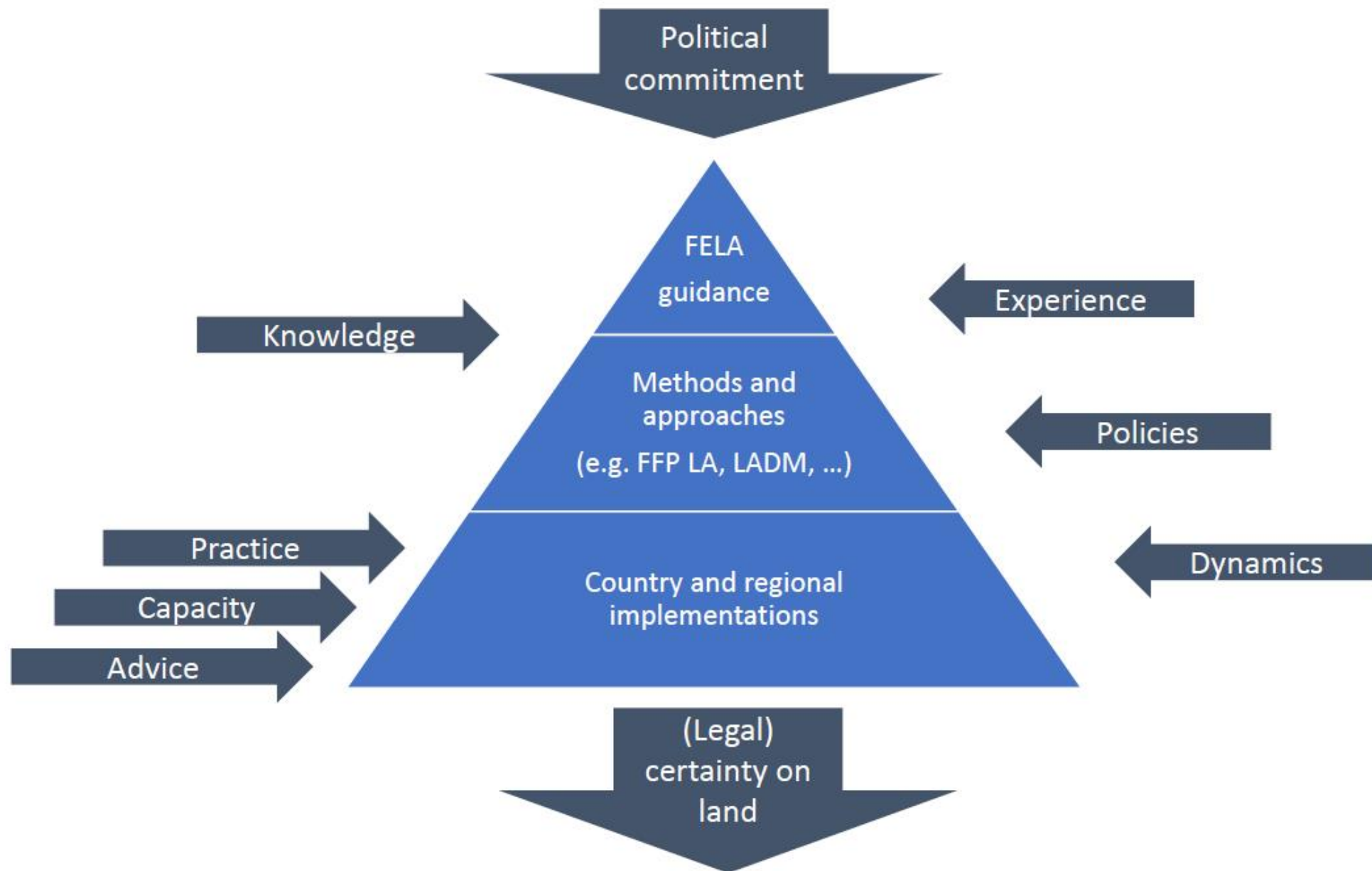


Approach



Practise







# Challenges

## General

- | Implementation gap to operationalise FELA, LADM, FFP LA at country level
- | High demand for capacity development & technical assistance

## Global South

- | Lack of complete land records
- | Low tenure security (70% unregistered)
- | Gender inequality in land rights
- | Weak institutions and outdated systems
- | Limited technical capacity
- | Low access to geospatial data
- | High vulnerability to land disputes

## Europe

- | Digital transformation gaps
- | Interagency institutional cooperation issues
- | Interoperability of data with & within organisations
- | Alignment with EU Directives
- | Digital vulnerabilities Requirements data protection and cyber security
- | Inclusion & Accessibility





## A global (virtual) hub for Effective Land Administration

- To accelerate implementation of frameworks, models and approaches
- To help countries manage land rights and advance the 2030 Agenda for Sustainable Development

Knowledge  
exchange

Capacity building

Technical support





kadaster



Proposed by



**GEOSA**

الهيئة العامة للمساحة  
والمعلومات الجيومكانية  
General Authority for Survey  
and Geospatial Information

kadaster



Cadastre, Land Registry and Mapping Agency  
The Netherlands



SINGAPORE  
LAND AUTHORITY



**ITC**  
UNIVERSITY  
OF TWENTE.

Supported by

UNGGIM Expert Group on Land Administration  
Management





# Effective Land Administration & UNGGIM Europe

- Recognize significance of Effective Land Administration in the upcoming Work Plan
- Support establishment & development of a global hub on Effective Land Administration
- Share best practices to support countries in developing and implementing effective, inclusive, and sustainable land administration systems.

