

The UN-GGIM: Europe Work Plan

Introduction

The aim of UN-GGIM: Europe is to contribute to the more effective management and availability of geospatial information in Europe and ensuring that the work of the Regional Committee is aligned to the global UN-GGIM programme¹.

At its tenth plenary meeting in November 2023 the Regional Committee confirmed its support and commitment to implementing the UN-GGIM: Europe Workplan 2022-2025², which is the blueprint to putting into practice the UN-GGIM Europe Strategy adopted at the eight plenary meeting.

This strategy which is structured around the three main strategic pillars of Sharing Knowledge, Raising Awareness and Strategic Leadership outlines the mission of UN-GGIM: Europe, which is to *maximise the use of geospatial information in Europe for a safer and more sustainable world*. This will be achieved *through identifying opportunities, understanding and solving common challenges across the Europe Region. By collaborating with partners to enhance the use of geospatial data and its integration with statistics to inform and drive action*³.

It is important to note that the steer to the work of UN-GGIM: Europe comes from the global UN-GGIM programme, agreed and adopted annually at the Committee of Experts sessions in August. This ensures the work of the Regional Committee remains aligned with the global agenda while, focusing on the needs and priorities of Europe. The regional experiences from UN-GGIM: Europe are shared with the Committee of Experts closing the loop of a circular process.

Figure 1 – Aligning the regional priorities with the global programme



¹ Article 2 - Purpose and Activities of the [Rules and Articles of UN-GGIM: Europe](#)

² [UN-GGIM: Europe Work Plan 2022](#)

³ Vision and Mission outlined in the [UN-GGIM: Europe Strategy](#)



The UN-GGIM: Europe Work Plan 2022 – 2025 focuses on the five key priority areas which had been agreed by the Regional Committee at its eighth plenary session as meeting the strategic needs and requirements of Europe within the global programme of the Committee of Experts:

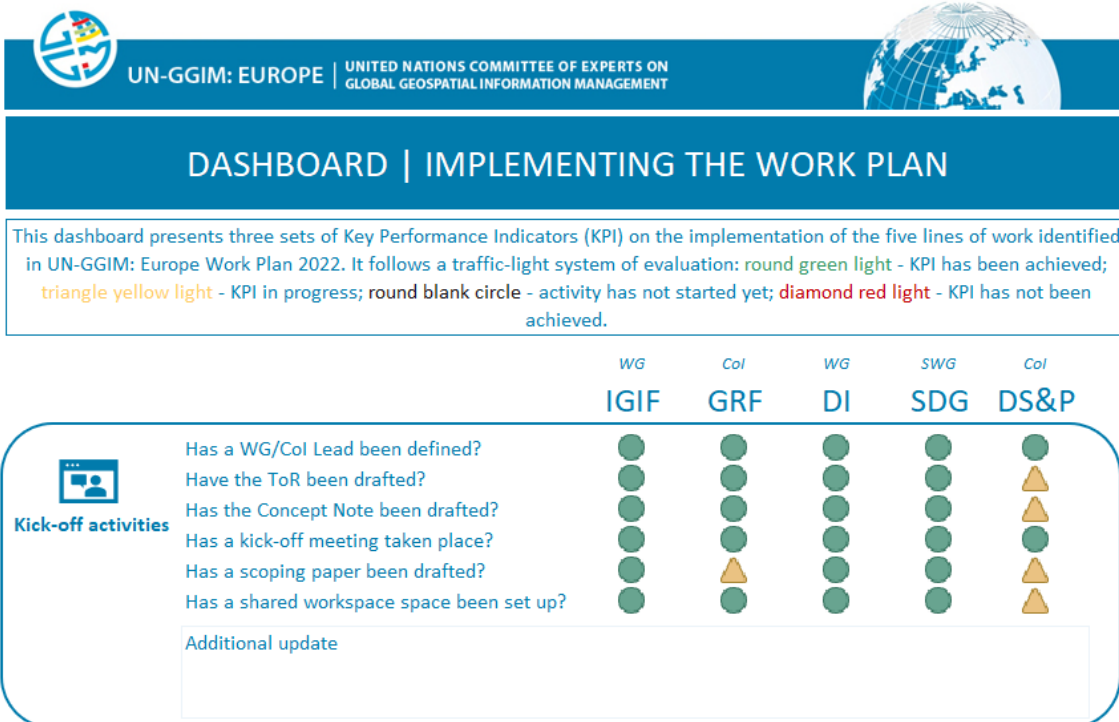
- Data Integration
- Sustainable Development Goals
- Data Strategy and Policy
- United Nations Integrated Geospatial Information Framework
- Geodetic Reference Frames

The relevance and importance of these five key priority areas were established through a region-wide survey conducted at the end of January 2022, to gauge the relevance of the lines of work with the members of UN-GGIM: Europe and to identify the Member States and observers interested in taking part in implementing these.

The rationale and aims for each of key priority area then were translated into five lines of work with proposed activities and expected outputs outlined in the work plan the Regional Committee of UN-GGIM: Europe planned to focus on for the next three to five years starting from 2022. Following its adoption at the ninth plenary implementation of the work plan started by the newly established Lines of Work, the working groups, to realise the ambitions of the five lines of work.

Reporting on the Lines of Work

The Lines of Work are reporting on their work and progress in implementing the work plan to the UN-GGIM: Europe Regional Committee at this Eleventh Plenary Session. The dashboard below provides a high-level overview of activities and progress for each of the five lines of work:





This dashboard presents three sets of Key Performance Indicators (KPI) on the implementation of the five lines of work identified in UN-GGIM: Europe Work Plan 2022. It follows a traffic-light system of evaluation: **round green light** - KPI has been achieved; **triangle yellow light** - KPI in progress; **round blank circle** - activity has not started yet; **diamond red light** - KPI has not been achieved.

Line of Work - Data Integration



- No. of web/physical meetings ●
- No. of webinars ●
- No. of webinar summary reports ●
- Has an online dissemination page been set up? ●
- No. of conferences/workshops/seminars ●

All three planned webinars have been conducted
All webinar evaluation reports have been compiled

Line of Work - SDG



- No. of web/physical meetings ●
- No. of webinars ●
- No. of webinar summary reports ●
- Has an online dissemination page been set up? ●
- No. of conferences/workshops/seminars ●

All four planned webinars have been conducted
All webinar evaluation reports have been compiled

Line of Work - Data Strategy & Policy



- No. of web/physical meetings ●
- Engaging with regional stakeholders ▲
- Has an online dissemination page been set up? ▲

ToRs agreed by the LoW
Participating in the INSPIRE Conference

Community of Interest - IGIF



- Initial activities discussed and agreed ●
- Identify sub-group leads for initial activities ●
- Regular meetings with HLG-IGIF Working Group ▲
- Design webinar series ●
- Contribute to HLG-IGIF tasks ▲

The Working Group has made good progress in designing and delivering the webinar series.
A key objectives is to support the HLG-IGIF. All three HLG-IGIF groups have active Europe engagement
The Working Group is considering how to strengthen and elevate its activities over coming year.

Community of Interest - GRF - Europe



- No. of web/physical meetings ▲
- Create contact register ▲
- Prioritization of proposed work packages ▲
- Agreement on 2025 work plan ▲
- Contribute to UN-GGCE ▲
- Engaging with regional stakeholders ▲

Priorities for proposed work packages will be set in June 2024
Work Plan will be finalized in June 2024
Scoping paper will be finalized in August 2024
Implementation of work plan will start in September 2024
Engagement numbers are unclear, will become clear by end of 2024



As can be seen from the dashboard all the five Lines of Work have progressed significantly in implementing their respective work plans. Some of the tasks outlined in the Work Plan 2022 – 2025 were expected to be developed in a time-frame of 2 – 3 years, some of the Lines of Work have realised the aims and outcomes on schedule.

Following on the work already conducted by the Working Group Data Integration established in the previous work programme of UN-GGIM: Europe the Lines of Work Data Integration and SDG delivered their outputs outlined in the work plan and are proposing further tasks for the short term.

The Lines of Work on the UN-IGIF and GRF- Europe- were both established to facilitate at the regional level the global programme of specific agenda items of functional groups of the Committee of Experts. Specifically, the High-level Group of the United Nations Integrated Geospatial Information Framework (HLG UN-IGIF) and the Subcommittee on Geodesy. Progress on these working groups, established as Communities of Interest, relies on the advancement of the work being carried out by the global groups. Both these Lines of Work have received a boost of activity in the past months. The progress of the HLG UN-IGIF and the establishment of the UN Global Geodetic Centre of Excellence in Bonn. This impetus has allowed these Lines of Work to both progress and review their tasks in the work plan.

The Line of Work Data Strategy and Policy, was established mainly to address and understand the linkages of European data policy with the UN-GGIM agenda and programme of work, such as the UN-IGIF. The progress of this line of work is increasing slowly, activities have mainly focused on informing members of the policy areas at UN-GGIM and European levels.

It should be emphasised that the progress on advancing the lines of work and priority areas of the Europe Region Committee can only be achieved through the leadership of the LoW leads but also through the commitment and interest of the UN-GGIM: Europe. The Executive Committee would like to reiterated a call to Member States and Stakeholders to get engaged with the lines of work to contribute to their implementation in the Europe Region.

Updated UN-GGIM: Europe Work Plan 2024

Given that all the lines have progressed or even delivered on the tasks outlined in the Work Plan 2022 – 2025, an update to the work plan is being proposed. These updates are either building on the outputs already delivered by the Lines of Work or a result of progress being made in the global programme of work of the Committee of Experts.

The proposed updated work plan spans the same period up to 2025. Details for each of the five lines of work follows.

It should be noted that the Work Plan 2022 – 2025 aims to put into practice the UN-GGIM Europe Strategy adopted at the eighth plenary meeting. Following the eleventh plenary meeting the UN-GGIM Europe Strategy will be reviewed and renewed.



Data Integration

Background

UN-GGIM: Europe has had a functioning Working Group on Data Integration actively working and producing relevant inputs and [deliverables on data integration](#) since 2024.

The refreshed strategy for UN-GGIM: Europe takes into consideration that Data Integration is a central issue given the current European landscape focus on data strategy. Increasing data interoperability, standardization and quality are key points in this framework of moving towards data driven-innovation and evidence-based decisions and policies.

Many opportunities and challenges remain to be dealt with on this topic in order to increase the scope of data integration, and particularly between geospatial and statistical data: relevant issues include geocoding, common geographies, standards, consistent time-series data, persistent unique identifiers, linking methods and linked data, metadata and data quality, data protection and security and interinstitutional collaboration.

Several initiatives are taking place at European level (like Copernicus and Galileo) and will continue to enhance the contribution of Earth Observation (EO) to Europe's digital and green transitions priority policies.

Within UN-GGIM there are already in place other relevant related data integration activities which include the work being developed by the [Expert Group on the Integration of Statistical and Geospatial Information](#).

Objectives

The Line of Work on Data Integration functions as a Working Group (WG), following the defined Terms of Reference (ToR).

In 2023 the Line of Work Data Integration conducted several webinars to maintain the active contribution on data methods and on showcasing the added value of integrating geospatial data with other data, and further exploring requirements and practices on the use and integration of EO data.

Outputs

The Lines of Work Data Integration and SDGs held a joint physical meeting in Lisbon on 15-16 April 2024 in Lisbon, hosted by Statistics Portugal. The main outcomes of the seven webinars (data integration and SDGs) were discussed and further tasks for the remaining working phase of this work plan were evaluated.

The Line of Work on Data Integration identified actions/tasks that include:

- An evaluation and assessment report for the UN-GGIM: Europe data integration report series (recommendations, obstacles for implementation, etc.).



- To conduct an assessment report (storyboard) on pragmatic data integration use case example (utilizing a prominent use case example from the global UN-GGIM Task Team on Climate Resilience).
- (If feasible) to carry out a questionnaire/poll on data integration issues in order to understand other domains will be foreseen.

Timetable 2024 to 2025

The work is expected to be developed within the remaining year.

SDG

Sustainable Development Goals

Background

UN-GGIM: Europe has been actively addressing and providing operational and technical guidance for the calculation of specific [Sustainable Development Goals \(SDG\) indicators](#) since 2017.

It is widely recognised that Sustainable Development will continue to be a high priority on global agendas and, as 2030 approaches, measuring progress towards the SDGs will become increasingly important, with geospatial data playing a critical role to provide context and deliver data to operationalize indicators.

It has been clear that from the onset that the various countries of the world (and of course the different countries of Europe) were at different stages of sustainable development and of their ability to track and implement the indicator framework for the monitoring of the 17 SDGs. The COVID-19 pandemic brought additional challenges, aggravating, and potentially delaying, the progress towards achieving the SDGs.

The contribution of geospatial information to the SDGs has been highlighted by recent developments – the publication of the '[SDGs Geospatial Roadmap](#)', the recently launched 'Data Alliance' and, within the Inter-Agency Expert Group on SDG Working Group on Geospatial Information ([IAEG SDG WG GI](#)), by its focus on providing guidance to the statistical community (including the SDGs Custodian Agencies) on approaches to the review and validation of data emanating from the use of Earth observations (EO). Other initiatives have been showcasing the added value of EO for SDG, such as the one developed by GEO group (EO4SDG) and within the European programmes, such as the Copernicus, shedding light on the potential of satellite imagery data to address environment related topics.

Objectives

The line of work on SDG functions as a Working Group (WG), following the defined Terms of Reference (ToR).

The main aim of this line of work is to maintain the active contribution of UN-GGIM: Europe on showcasing the added value of integrating geospatial data with other data to address SDG



indicators, by building on the previous deliverables and focus on common problems and technical and methodological solutions. The work also intends to further explore requirements and practices on the use and integration of Earth Observation data, maintaining a close articulation with the IAEG-SDG WG GI.

In 2023, the line of Work SDG has conducted four webinars to maintain the active contribution on showcasing the added value of integrating geospatial data with other data to address SDG indicators

Outputs

At the physical meeting in Lisbon on 15-16 April 2024, the main outcomes of the seven webinars (data integration and SDGs) were discussed and further tasks for the remaining working phase were evaluated.

The Line of Work on SDG identified actions/tasks that include an evaluation and assessment report for the UN-GGIM: Europe data integration report series (recommendations, obstacles for implementation, etc.).

The Line of Work on SDG plans to:

- Revisit the SDG indicators list and to confirm on which indicator methodology and topic (e.g. climate change) to work on.
- (Where relevant) concrete project proposals for grants have been considered as relevant to the work.

Timetable 2024 to 2025

The work is expected to be developed within the remaining year.

UN-IGIF Integrated Geospatial Information Framework - Europe

Background

The UN Integrated Geospatial Information Framework (UN-IGIF) provides a basis and guides for developing, integrating, strengthening, and maximising geospatial information management and related resources in all countries.

It has quickly become the 'umbrella framework' for UN-GGIM through which many of the existing activities are linked to. It is also an operational framework, and many nations (including several in Europe) are already using the UN-IGIF to develop and strengthen their national capabilities.

The UN-IGIF continues to be reviewed and updated to ensure that it is fit-for-purpose and has the right focus and resourcing to ensure its implementation. This is being led at the global level by the High-level Group on IGIF (HLG-IGIF). This working group has been set-up to support the European members of the HLG-IGIF, to contribute to the global tasks, and to raise the profile and relevance of UN-IGIF to member of the European Region.



Objectives

- Provide support and input to the European Members of the HLG-IGIF, as and when required.
- Contribute to global tasks of the HLG-IGIF, making sure regional concerns and issues are raised and addressed.
- Understand the issues and obstacles that Regional Members may face when looking to implement IGIF develop regionally focused outputs.

Outputs

The expected outputs include:

- That the HLG-IGIF has a wider pool of experts available to contribute to its work, and that European Members contribute where relevant.
- The avoidance of duplication of effort – making sure that activities at the regional level support the global activities, and the outputs are transferrable in to UN-GGIM: Europe.
- Act as a convening body for UN-GGIM: Europe, hosting knowledge share and development activities such as webinars, workshops, or seminars.
- Providing Regional use cases and examples of Member States developing Country-level Action Plans.

Short- to Medium-term actions

- Define the structure and set up of the Working Group – Delivered
- Initiate discussions with European Members of HLG-IGIF and the HLG-IGIF Work Plan leads to identify areas for engagement – Delivered
- Creation of relevant blogs, webinars and other thought-leadership pieces to continue outreach and engagement activities.
- Working closely with other UN-IGIF Regional Working Groups to maximise impact from activities.
- Considering hosting an in-person workshop as defined by Member States needs.

Timetable 2024 to 2026

The European Working Group continues to refine its activities making sure they remain relevant to the agreed objectives. The Working Group has been reviewing its activities following the successful webinar series, as part of this review there is likely to be more focus on outreach and engagement activities over the next twelve months.

These activities will continue to align with the HLG-IGIF's global working groups.

Data Strategy and Policy



Background

In Europe, the political programmes and the European Green Deal establish a green transformation in the light of the UN SDGs. The [European strategy for data](#) adopted in early 2021 has the ambition of a 'society empowered by data', anchoring data as the basis for better decision making. Policies and legislations that support [open public sector data](#), [common data spaces](#), [data governance](#), the ethical use of [artificial intelligence](#), and concepts towards a geospatially enabled 'knowledge infrastructure' have an impact on data integration and its provision throughout the region. While the European Union is a subset of the region covered by UN-GGIM: Europe, its data policies and legislation have a broader regional impact.

Large volumes of data are produced daily from multiple data sources based on different types of devices and technologies. How information is collected, managed, stored, used and reused in an efficient, transparent and accessible way are critical issues that need to be addressed strategically in order to maximise the value of geospatial data to produce meaningful and location-based relevant information.

Within UN-GGIM there are already in place relevant related activities with this line part and, particularly, the [IGIF strategic pathways](#) on Policy and Legal, Data and Standards, and the Working Group on Policy and Legal Frameworks for Geospatial Information Management.

Objectives

The line of work on Data Strategy and Policy will function as a Community of Interest (CoI), following the defined Terms of Reference (ToR) [to be drafted].

The main aim of this CoI is to contribute to the development of relevant policy and data strategies regarding the management and use of geospatial data to maximise its value in addressing the challenges of a green, sustainable and digital Europe, on the one hand, and to understand the linkages of European policy with the Integrated Geospatial Information Framework (IGIF).

Outputs

The expected outputs include:

- To coordinate and liaise with agencies and stakeholders to bring the relevant actors together
- To provide expertise and consultation to the activities of UN-GGIM: Europe and to the ExCom
- To establish a forum for exchange of expertise and experiences
- To support and promote capacity building and development initiatives

Short- to Medium-term actions

- Consolidate the scope of the work and the activities to be developed
- Define and set up a wiki working page as a share-point for documentation



Timetable 2022 to 2024

The work is expected to be developed in a time-frame of 2 years.

GRF Geodetic Reference Frames - Europe

Background

Geodesy and geodetic networks are vital yet often overlooked components in the collection and management of geospatial information. Despite numerous national and international programmes, there is a need for a regional activity within UN-GGIM: Europe to enhance coordination and support. The establishment of the UN-GGIM Global Geodetic Centre of Excellence (UN-GGCE) in Germany provides an opportunity for this Community of Interest (CoI) to support global geodetic efforts and represent European perspectives.

The UN-GGIM Global Geodetic Centre of Excellence, hosted by the Government of Germany, was established in 2023. The Community of Interest on Geodetic Reference Frames: Europe (GRF-Europe) will provide support and activities to the Global Geodetic Centre of Excellence. The Community of Interest will act as a distinct forum to bring the perspective of UN-GGIM: Europe members together and contribute to the overarching global discussions and activities.

During 2023 and the beginning of 2024 activities were focused on establishing GRF-Europe and to initiate discussions with relevant stakeholders in the Europe region. The outputs of the discussions will be used to create the work plan in Q2 of 2024.

Objectives

- Provide support and actions that further the aims of the Global Geodetic Centre of Excellence
- Align and support the UN-GGIM Subcommittee on Geodesy's priorities for the Global Geodetic Reference Frame, and translate them into actions relevant for the member states of UN-GGIM: Europe
- Act as a coordination body liaising with and between established national/regional and international programmes and bringing different geodetic stakeholders together
- Promote the growth and sustainability of the geodesy profession
- Assist European Members States on geodesy-related topics
- Foster decision-making based on geodesy as and when required
- Engage European experts to contribute to UN-GGIM / Sub-Committee on Geodesy / UN-GGCE

Outputs

The activities will link to the GGRF Position Paper and GGCE objectives providing a connection to national experts as and where relevant.



There will be a focus on the 'geodetic profession' looking at sustaining and growing the geodetic profession rather than technical development. This is recognised as a potential gap in existing projects and programmes.

A coordinating role between the technical and the political level is identified as a potential gap in the current European geodetic landscape. The Col, operating under UN-GGIM: Europe, could provide a forum to bridge this gap and enable a stronger integration of geodetic reference frames into national and regional geospatial policies and infrastructures.

Enhanced collaboration and knowledge sharing among European geodesists.

Short- to Medium-term actions

- Define the structure and set up of a wiki working page (done)
- Maintain and update the wiki working page for coordination and information sharing (continuous task)
- Foster partnerships with technical organisations such as EUREF and EUPOS (done, continuous task since Q2 2024)
- Finalize priorities for proposed work packages (Q2 2024)
- Finalize work plan (Q2 2024)
- Create a comprehensive contact register covering all Member States in the Europe region in support of the work plan that will be developed (start Q3 2024)
- Implement work plan (2nd half 2024 – end 2025)

Timetable 2022 to 2024

The initial work is anticipated to be developed in a time-frame of ~2 years. Note that some of the work packages for the Col are planned to extend beyond 2025.

Putting the lines of work into practice

Governance

It is the task of the Executive Committee of UN-GGIM: Europe, the UN-GGIM: Europe Secretariat, and Regional Committee (through working groups and communities of interest) to implement the work plan.

The overarching role of the Executive Committee of UN-GGIM: Europe is to provide guidance and oversight in the implementation of the work plan in accordance of the UN-GGIM: Europe Strategy. The lines of work are not siloed, there is significant overlap and interaction between them, it is the task of the Regional Executive Committee to assume an overarching role ensuring synergies and communications, between and across working groups, and other regional forums.

The Regional Secretariat supports the Regional Executive Committee in the exercise of its function and assistance in the overall achievement of activities of UN-GGIM: Europe work plan. While also actively communicating the UN-GGIM: Europe activities and achievements to all relevant stakeholders across multiple channels.

UN-GGIM: Europe Work Plan – 2024

Eleventh Plenary UN-GGIM: Europe, – 19 June 2024



Call to Action

The implementation of the lines of work and the priority areas is through the contribution and active input of the members of UN-GGIM: Europe. Each line of work has a group of interested members and stakeholder who are working together to deliver the work plan.

The Regional Committee promotes and encourages the collaboration between national mapping and cadastral authorities and national statistical institutes in the European Region, along with European Institutions and observer bodies. Members States and observers are therefore invited to express their interest and join the UN-GGIM: Europe activities and in participating in the lines of work.

Action proposal

The Executive Committee asks that:

- The Regional Committee approved the update to the UN-GGIM: Europe Work Plan 2024
- It be given the mandate to continue to implement this updated UN-GGIM: Europe Work Plan and to decide on how best to coordinate the regional work on the different topic areas and lines of work.