

# 10<sup>th</sup> JOINT UN-GGIM: EUROPE – ESS – UNECE MEETING ON THE INTEGRATION OF STATISTICAL AND GEOSPATIAL INFORMATION

## Report from UN-GGIM: Europe Line of Work on SDG



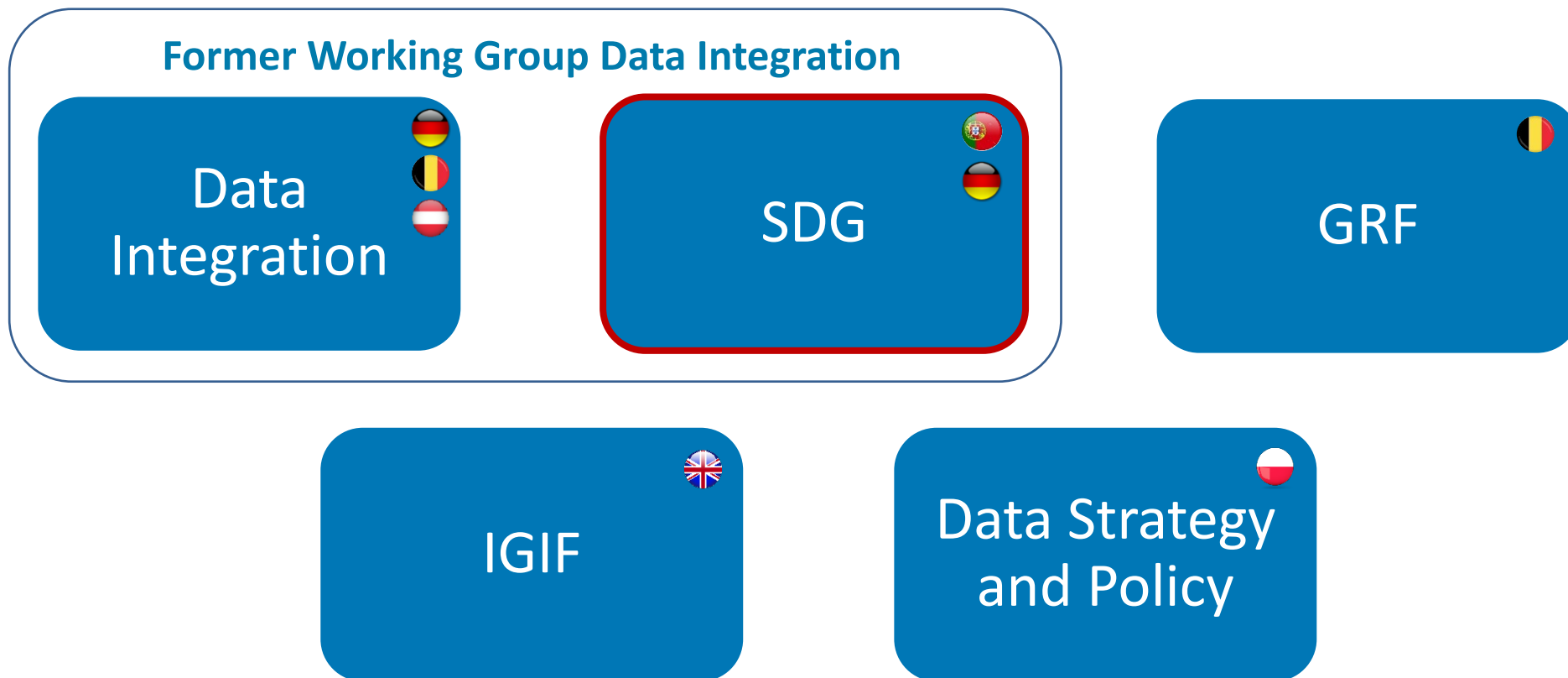
UN-GGIM  
EUROPE

UNITED NATIONS  
COMMITTEE OF EXPERTS ON  
GLOBAL GEOSPATIAL  
INFORMATION MANAGEMENT

Célia Ferreira  
Statistics Portugal  
13 March 2024



# UN-GGIM: Europe – the new work plan (2022-2025)





© [CC BY-NC](#)

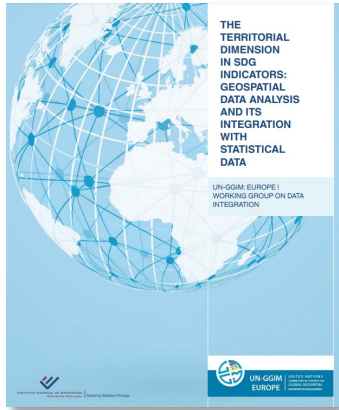


UN-GGIM: EUROPE

UNITED NATIONS COMMITTEE OF EXPERTS ON  
GLOBAL GEOSPATIAL INFORMATION MANAGEMENT

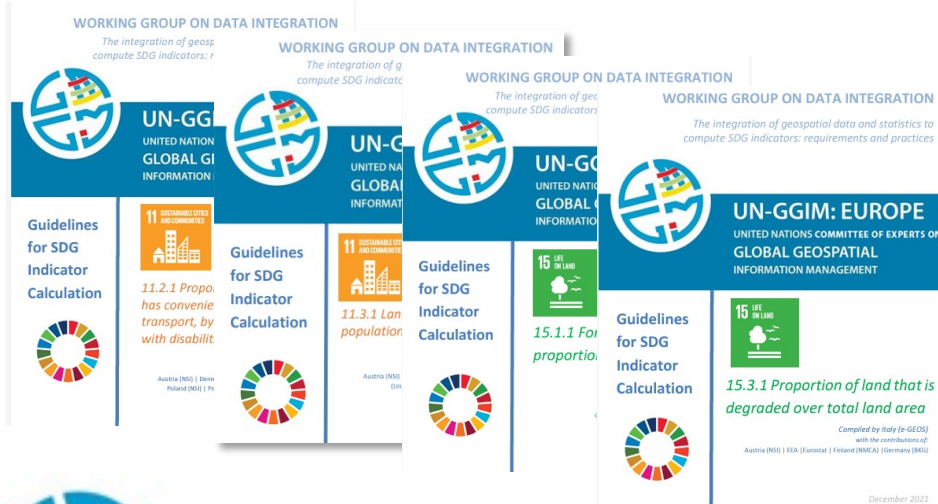


# Line of Work SDG



## Work Plan 2017 – 2019 | Deliverables on geospatial analysis for SDG indicators

In-depth report on **The territorial dimension in SDG indicators**, addressing the **contribution of geospatial data analysis** and its integration with statistical data at a **Global, European and National** perspective based on the analysis of selected SDG indicators



## Work Plan 2019 – 2022 | Deliverables on computing SDG indicators

**Stand-alone documents**, providing methodological, operational and technical **guidance** in the use of geospatial data and statistics to compute SDG indicators, with a **European and National perspective**, and reflecting on solutions which may increase granularity



UN-GGIM: EUROPE

UNITED NATIONS COMMITTEE OF EXPERTS ON  
GLOBAL GEOSPATIAL INFORMATION MANAGEMENT





© [CC BY-NC](#)



UN-GGIM: EUROPE

UNITED NATIONS COMMITTEE OF EXPERTS ON  
GLOBAL GEOSPATIAL INFORMATION MANAGEMENT



# Line of Work SDG – Work plan



- To compile and put together **use cases/operational examples** and produce **recommendations/guidelines** on the calculation of SDG indicators
  - To evaluate and assess the use of relevant national geospatial data as **open data**
  - To provide **national show cases** for the presentation of relevant SDG indicators
  - To promote and conduct **webinars / guided discussions** on specific SDG indicators and/or cross-cutting methodological issues and solutions
  - To support and promote **capacity building and development initiatives** on SDG indicator calculations
- **Link to global IAEG-SDG WG GI: Inter-agency and Expert Group on SDG Indicators: Working Group on Geospatial Information**



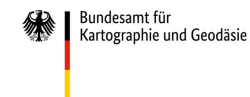
# Line of Work SDG – Webinar series



- The underlying **rationale** translates a narrative thread focusing on previous findings, data sources and methods, data integration and policy needs.
- **Each webinar was coordinated by a different institution and several institutions contribute to them**, by giving a broad perspective of the subjects discussed.

- Concept note with main content of the webinar
- Open and guided Q&A
- Evaluation report with main outcomes and findings
- Recording and presentations available on website:

<https://un-ggim-europe.org/un-ggim-europe-webinar-series/>



UN-GGIM: EUROPE

UNITED NATIONS COMMITTEE OF EXPERTS ON  
GLOBAL GEOSPATIAL INFORMATION MANAGEMENT



# Line of Work SDG – Webinar series (2023)



## Setting the scene: Previous findings | Sources | Integration | Policy needs

1	<b>Showcasing the added value of geospatial and statistical data integration to compute SDG indicators</b>	E-GEOS   Statistics Sweden   DG Regio   EEA   Statistics Portugal	25 April ✔	<b>Statistics Portugal</b> Francisco Vala
2	<b>Earth Observation and SDG: uses cases and workflows</b>	EEA   EuroGeo   EuroGeographics	23 May ✔	<b>European Environmental Agency</b> Stefan Jensen & Jose Rubio
3	<b>United Nations Geospatial Network Data Hub: One UN Geospatial Situation Room</b>	UN Geospatial Network   UNECE   EFGS   JRC	15 November ✔	<b>Eurostat</b> Ekkehard Petri
4	<b>Geospatial information for territorial policy support in the context of SDGs</b>	JRC   OECD   DG REGIO	25 October ✔	<b>EC DG-REGIO</b> Hugo Poelman & Joachim Maes



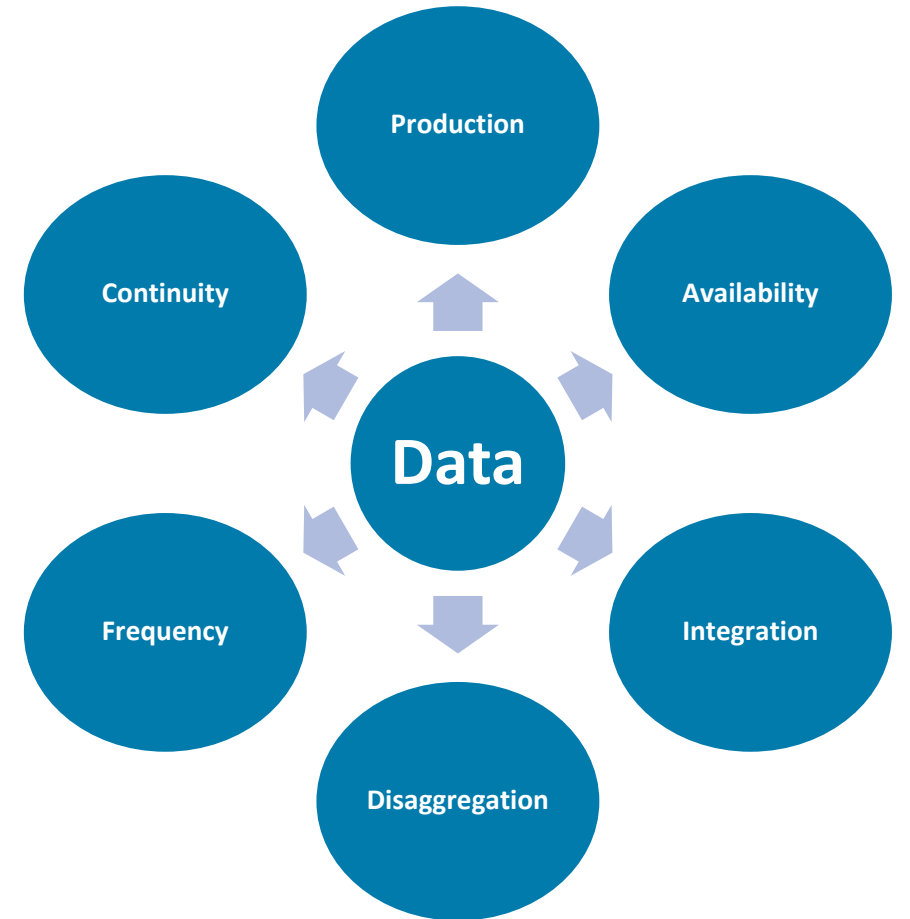


# Line of Work SDG – from webinars to reflection and debate



- **Data sources and methods**

- Availability of various geospatial datasets allows results more in line with country situation and monitoring needs (comparability, spatial and thematic disaggregation).
- Earth Observation (EO) data has become an essential part of the SDG indicators methodology and is increasingly used to innovate the way SDGs are monitored.
- Need of a concise authoritative set of pan-European datasets.
- Complementarity between authoritative data and non-conventional data.
- Data disaggregation allows a better follow-up of the indicators trend.

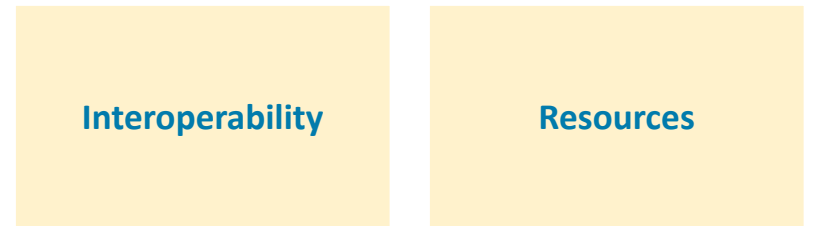


# Line of Work SDG – from webinars to reflection and debate



- **Technical and methodological aspects**

- Methodological guides provide a clear description of SDG indicators computation.
- Reinforcement of promotion of open, machine-readable data and the use of harmonized concepts and classifications.
- The usage of EO data is promising but often limited by resource constraints of institutions and/or countries.



- **Public policies and decision-making**

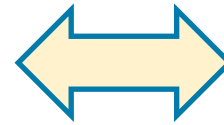
- Geospatial situation rooms are a promising concept to support regular decision taking and policy making.
- The implementation of geospatial situation rooms relies on the harmonization and standards.



*Global Geospatial Statistical Framework (GGSF) | Integrated Geospatial Information Framework (IGIF)*



# Line of Work SDG – from webinars to reflection and debate



**Moving from SDG targets monitoring to information to support interpretation and action towards the 2030 Agenda**



# Line of Work SDG – from webinars to reflection and debate



- Emerging SDG topics

Housing

(Urban) quality of life

Climate change

Digital transformation





© [CC BY-NC](#)



UN-GGIM: EUROPE

UNITED NATIONS COMMITTEE OF EXPERTS ON  
GLOBAL GEOSPATIAL INFORMATION MANAGEMENT



# Line of Work SDG – Next steps



- To evaluate the global outcome of webinars with the evaluation reports
- To find gaps and requirements of SDG calculation worth to be tackled by UN-GGIM: Europe in the future
- To use synergies and establish a substantial and fruitful cooperation with:
  - **IAEG-SDG: WGGI:** Inter-agency and Expert Group on SDG Indicators: Working Group on Geospatial Information
  - **UN EG ISGI:** Expert Group on the Integration of Statistical and Geospatial Information
  - **UNECE** data integration and SDG initiatives
- To strengthen the link to the global initiatives on SDG calculation issues



# Line of Work SDG – Next steps



## Lisbon Meeting – LoW Data Integration & Sustainable Development Goals

15-16 April 2024 – Lisbon, Portugal

### Aim

To assess the output and findings of webinar series and to discuss further tasks to be tackled within UN-GGIM: Europe for the remaining working phase

### Contributions

UN-GGIM groups and some European main stakeholders

### Agenda



Overview presentations and breakout sessions

*Late registrations until end of March / before Easter*

**UN-GGIM: EUROPE Meeting Lines of Work on  
"Data Integration" & "SDG" on 15 to 16 April 2024 in Lisbon**

**AGENDA, Day 1**

Item	Time	Agenda items	Lead	Notes
<b>Joint Session: Welcoming &amp; Setting the scene</b>				
1	14:00 10'	Welcoming address	Francisco Lima	INE – Statistics Portugal
10-minutes Picture break				
2	14:10 20'	Status Activities according to the Work Plan 2022 - 2025	Pier-G. (DE)/Célia (PT)	Overview on the activities of the new work plan – both LoW DI & SDG
3	14:30 15'	Information by the UN-GGIM: Europe Secretariat	Carol (Secretariat)	Plenary Session on 22-23 November 2023 UN-GGIM-13
<b>Joint Session: The Global perspective</b>				
4	14:45 10'	Overview on UN EG-IGSI activities, outcomes and challenges	Jern (NO)	Work being done within the global group related to the LoW DI & SDG
5	14:55 10'	Overview on the IAEG SDG WG GI work plan, outcomes and challenges	Olav (DK)	Work being done within the global group related to the LoW SDG
6	15:05 10'	Overview on UN-GGIM Climate Resilience Working Group's mandate, outcomes and challenges	James (UK)	Work being done within this global initiative related to the LoW SDG
<b>Joint Session: The European perspective</b>				
7	15:15 10'	Overview on the UN-GGIM: Europe LoW IGIF tasks, outcomes and challenges	James (UK)	Work being done within LoW IGIF related to the LoW DI & SDG
8	15:25 10'	Overview on the EEA SDG activities and challenges	Stefan (EEA)	Work being done within EEA related to the LoW SDG
9	15:35 10'	Overview on the EARSC SDG activities and challenges	Mónica (EARSC)	Work being done within EARSC related to the LoW DI & SDG
Announcement and Introduction to Breakout Sessions for both LoW				
15:45 Coffee break				
<b>Breakout Sessions: Discussions for both LoW</b>				
10	16:15 90'	Breakout sessions in two groups (Part 1) <ul style="list-style-type: none"><li>New potential issues and topics for LoW Data Integration &amp; SDG (Co-Chairs)</li><li>Input from stakeholders (participants)</li></ul>	Pier-Giorgio (DE), Nathalie (DE), Markus (AT), Célia (PT), Gwendolin (DE)	Presentation of evaluated and assessed outcomes and findings of the webinars Discussion about further tasks to be tackled within UN-GGIM: Europe for the remaining working phase
<b>Joint Session: Summing up</b>				
11	17:45 15'	Summing up day 1 & organisational matters	See above	
18:00 Close				
20:30 Dinner (self-paying) – tbd				

 UN-GGIM: EUROPE | UNITED NATIONS COMMITTEE OF EXPERTS ON GLOBAL GEOSPATIAL INFORMATION MANAGEMENT 



UN-GGIM: EUROPE

UNITED NATIONS COMMITTEE OF EXPERTS ON  
GLOBAL GEOSPATIAL INFORMATION MANAGEMENT



# Contact details

## Working Group Lead / Chair:

Pier-Giorgio Zaccheddu, Germany

Federal Agency for Cartography and Geodesy (BKG)

[pier-giorgio.zaccheddu@bkg.bund.de](mailto:pier-giorgio.zaccheddu@bkg.bund.de)

Sabine Afflerbach-Thom, Germany

Federal Agency for Cartography and Geodesy (BKG)

[sabine.afflerbach-thom@bkg.bund.de](mailto:sabine.afflerbach-thom@bkg.bund.de)

## Line of Work SDG Co-Chair:

Célia Ferreira, Portugal

Statistics Portugal

[celia.ferreira@ine.pt](mailto:celia.ferreira@ine.pt)

## More information on our website:

<https://un-ggim-europe.org/working-groups/low-sustainable-development-goals/>





# Thank you for your attention!



**UN-GGIM**  
**EUROPE**

UNITED NATIONS  
COMMITTEE OF EXPERTS ON  
GLOBAL GEOSPATIAL  
INFORMATION MANAGEMENT

10th JOINT UN-GGIM: EUROPE – ESS – UNECE MEETING ON THE  
INTEGRATION OF STATISTICAL AND GEOSPATIAL INFORMATION

Report from UN-GGIM: Europe Line of Work on SDG

