

10th JOINT UN-GGIM: EUROPE – ESS – UNECE MEETING on the integration of statistical and geospatial information

Report from UN-GGIM: Europe Line of Work on ‘Data Integration’



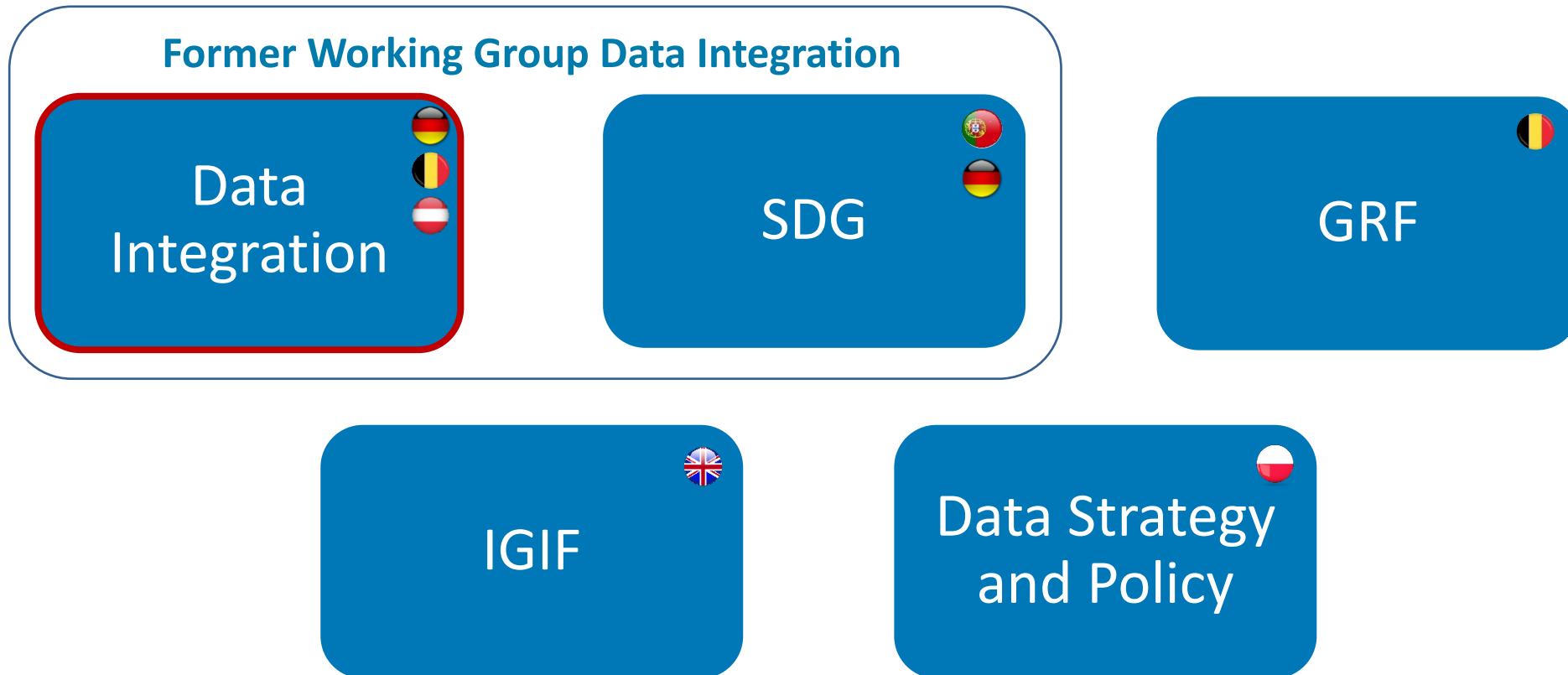
UN-GGIM
EUROPE

UNITED NATIONS
COMMITTEE OF EXPERTS ON
GLOBAL GEOSPATIAL
INFORMATION MANAGEMENT

Nathalie Delattre
Institut Géographique National (IGN), Belgium
13 March 2024



UN-GGIM: Europe – the new work plan (2022-2025)



Line of Work ‘Data Integration’

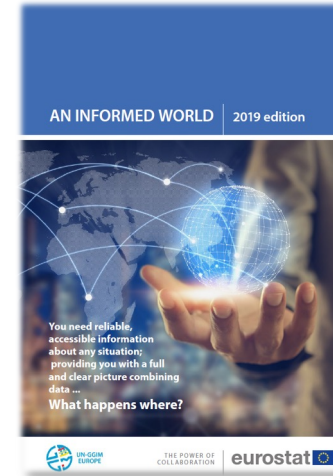


Work Plan 2017 – 2019: Policy Outreach Paper + Leaflet



Develop an outreach document

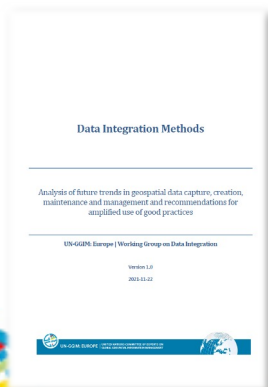
→ **Main audience:**
Senior manager in NSIs, NMCA and ministries



Develop a leaflet

→ **Main audience:**
Policy makers who are not “geospatially related”

Work Plan 2019 – 2022: Report on Data Integration Methods



Collect **national best practice examples** for data integration and describe **methods in the context of the European strategies and developments** (Data spaces, Geospatial Knowledge Infrastructure)

→ Derive **key recommendations** on Data Integration Methods



Paper on Data Integration Methods: Recommendations

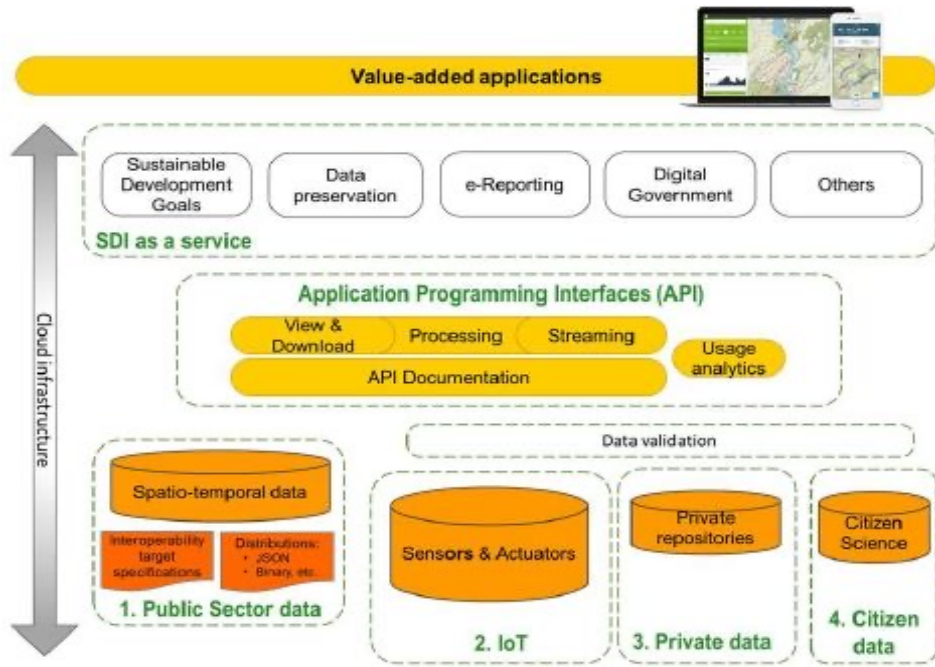
- Define and implement valid **Persistent Identifier (PID)**
- Agree upon **common definitions** and enforcement of **fundamental geographies** and **linked data**
- Make geospatial and statistical data interoperable, simple, and of **good quality**
- Develop and implement sustainable and **automated data integration processes**
- **Invest resources and capacity building**
- Embedded domains



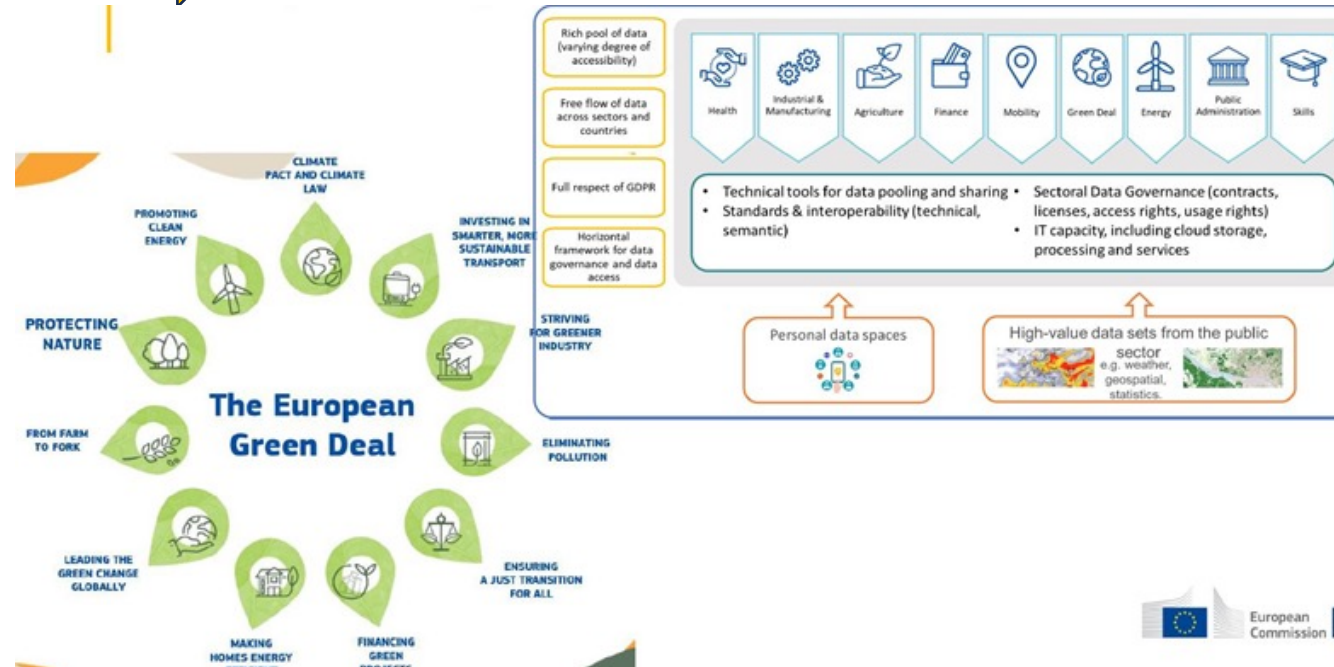
Recommendation : Data integration with varied domains (Green deal)

from data-centric geospatial infrastructure (SDI) to 'Geospatial knowledge infrastructure (GKI)'

Data-centric (SDI)



Knowledge-centric (GKI)



FAIR Principles : machine readable data access

into end-user digital society



UN-GGIM: EUROPE

UNITED NATIONS COMMITTEE OF EXPERTS ON GLOBAL GEOSPATIAL INFORMATION MANAGEMENT



Promoting the recommendations on DI, webinar co-organised with GISCO fev/2022; conclusions and findings

- NMCAs and NSIs have to **break the silos** of their SDIs
- to evolve towards a **Geospatial Knowledge Infrastructure**,
- Investing in 'Linked Data' and **common ontologies**
- **Blocking factor**: the lack of **knowledge, skills and expertises** in matter of data integration methods and processes
- **Initiatives based on good willingness but not enough**
- **Solutions: European institutions must take a substantial and leading role** by providing priorities and recommendations in matter of data integration, **defining the impact of NSIs and NMCAS in the European data spaces** and initiating European projects on the provision of SDG indicators.
- **Quality of Cooperation and collaboration** between NMCAS and NSIs is key.
- **Adaptation to new technologies, investing resources and capacity building**



2022 ->: Line of Work 'Data Integration' – Work plan



- To promote and conduct **webinars** on specific **data integration topics**

Recording and presentations available on website

<https://un-ggim-europe.org/un-ggim-europe-webinar-series/>

- To compile and put together **use cases/discussion papers on best practices** on data integration methods and produce recommendations and guidelines

- To support and promote **capacity building and development initiatives** on data integration

- → **Link to global UN-GGIM work (EG ISGI)**

© CC BY-SA



UN-GGIM: EUROPE

UNITED NATIONS COMMITTEE OF EXPERTS ON
GLOBAL GEOSPATIAL INFORMATION MANAGEMENT



Webinars of LoW 'Data Integration'



- 1st on 15 March 2023
 - Title: **Data integration in Europe – challenges, findings, added value and cost savings**
 - Coordinator: Eurostat
 - Presentations by Eurostat, DG REGIO, JRC
 - Aim: To show data integration experiences and perspectives at the level of EU institutions and services
 - **Main outcome:**
 - **Use cases and best practices on data integration methods & recommendations and guidelines** are still relevant
 - **Linked data approaches** needs to be better explained to national statistical offices and geospatial agencies
 - **Geospatial knowledge is essential**
 - Evaluation Report: 

eurostat 



UN-GGIM: EUROPE

UNITED NATIONS COMMITTEE OF EXPERTS ON
GLOBAL GEOSPATIAL INFORMATION MANAGEMENT




Webinars of LoW 'Data Integration'



- 2nd on 19 June 2023
 - Title: **The way towards a Geospatial Knowledge Infrastructure**
 - Coordinator: Nathalie Delattre (IGN Belgium)
 - Presentations by Geospatial World, EuroSDR, swisstopo
 - Aim: To gain a **greater understanding of the geospatial knowledge** value-chain and how sustainable development is being driven by knowledge applications
- **Main outcome:**
 - The **geospatial knowledge** concept is now in application **in many fields** like education, land monitoring, ecological transition and mobile maps applications
 - Showing other best practices examples and use cases (webinars)
 - GKI is a concept but defining a step-by step approach or methodology to set-up GKI and clearly defining processes.

GEOSPATIAL
WORLD
ADVANCING KNOWLEDGE FOR SUSTAINABILITY



 Schweizerische Eidgenossenschaft
Confédération suisse
Confederazione Svizzera
Confederaziun svizra



• Evaluation Report: 

UN-GGIM: EUROPE | UNITED NATIONS COMMITTEE OF EXPERTS ON
GLOBAL GEOSPATIAL INFORMATION MANAGEMENT



Webinars of LoW 'Data Integration'



- 3rd on 7 November 2023
 - Title: **Linked Data in the European spatial data infrastructure – an operational view**
 - Coordinator: Markus Jobst (BEV Austria)
 - Presentations by NSI Ireland, NMCA Finland & Netherlands
 - Aim: To provide an up-to-date overview of the application and perspectives of linked data in NMCA and NSI
 - **Main outcome:**
 - There is a huge **gap** between the **technical implementation** (vocabularies, thessaurii and ontologies) and **policy makers** for the topics of **linked data** and **geospatial knowledge infrastructures**.
 - Evaluation Report: 



Line of Work 'Data Integration' – Next steps



- To **evaluate the outcome** of the webinars → separate evaluation reports
- To find **gaps** and **requirements** of data integration issues worth to be tackled by UN-GGIM: Europe in the future
- To use synergies and establish a substantial and fruitful cooperation with UNECE on **capacity building**
- To **strengthen the link** to the global UN-GGIM initiatives on data integration issues



Next physical meeting (LoW ‘Data Integration & ‘SDG’) on 15-16 April 2024 in Lisbon (including invitation to global UN-GGIM initiatives)

Please register if you would like to attend, we are happy to have you onboard!

Guidelines for structured input to the breakout sessions

All participants are pleased to reflect on the following questions and will be asked to provide their opinion within the breakout sessions.

1. Which key points on Data Integration or SDG would you like to discuss? And why?
2. If you are interested in LoW SDG, please answer the following additional question:
Which indicators are you interested in addressing? Please mark your preferences in the Excel file attached to this document.
3. What are your expected results for a follow-up Work Plan/Task of the Lines of Work on Data Integration and on SDG?
4. What are your expectations for the breakouts?

If you would like to address a specific issue, please complete the form or provide us with slides in the following structure:

+	Introduce a problem that remains.
	Provide a solution to this problem or present results that address this problem.



UN-GGIM: EUROPE Meeting Lines of Work on “Data Integration” & “SDG” on 15 to 16 April 2024 in Lisbon

AGENDA, Day 1

Item	Time	Agenda items	Lead	Notes
Joint Session: Welcoming & Setting the scene				
1	14:00 10'	Welcoming address	Francisco Lima	INE – Statistics Portugal
10-minutes Picture break				
2	14:10 20'	Status Activities according to the Work Plan 2022 - 2025	Pier-G. (DE)/Célia (PT)	Overview on the activities of the new work plan – both LoW DI & SDG
3	14:30 15'	Information by the UN-GGIM: Europe Secretariat	Carol (Secretariat)	Plenary Session on 22-23 November 2023 UN-GGIM-13
Joint Session: The Global perspective				
4	14:45 10'	Overview on UN EG-ISGI activities, outcomes and challenges	Jørn (NO)	Work being done within the global group related to the LoW DI & SDG
5	14:55 10'	Overview on the IAEG SDG WG GI work plan, outcomes and challenges	Olav (DK)	Work being done within the global group related to the LoW SDG
6	15:05 10'	Overview on UN-GGIM Climate Resilience Working Group's mandate, outcomes and challenges	James (UK)	Work being done within this global initiative related to the LoW SDG
Joint Session: The European perspective				
7	15:15 10'	Overview on the UN-GGIM: Europe LoW IGIF tasks, outcomes and challenges	James (UK)	Work being done within LoW IGIF related to the LoW DI & SDG
8	15:25 10'	Overview on the EEA SDG activities and challenges	Stefan (EEA)	Work being done within EEA related to the LoW SDG
9	15:35 10'	Overview on the EARSC SDG activities and challenges	Mónica (EARSC)	Work being done within EARSC related to the LoW DI & SDG
Announcement and Introduction to Breakout Sessions for both LoW				
15:45 Coffee break				
Breakout Sessions: Discussions for both LoW				
10	16:15 90'	Breakout sessions in two groups (Part 1) <ul style="list-style-type: none"> • New potential issues and topics for LoW Data Integration & SDG (Co-Chairs) • Input from stakeholders (participants) 	Pier-Giorgio (DE), Nathalie (BE), Markus (AT), Célia (PT), Gaendolin (DE)	Presentation of evaluated and assessed outcomes and findings of the webinars Discussion about further tasks to be tackled within UN-GGIM: Europe for the remaining working phase
Joint Session: Summing up				
11	17:45 15'	Summing up day 1 & organisational matters	See above	
18:00 Close				
20:30 Dinner (self-paying) --- TBD				



Contact details

Line of Work 'Data Integration' Chair:

Pier-Giorgio Zaccheddu, Germany

Federal Agency for Cartography and Geodesy (BKG)
pier-giorgio.zaccheddu@bkg.bund.de

Sabine Afflerbach-Thom, Germany

Federal Agency for Cartography and Geodesy (BKG)
sabine.afflerbach-thom@bkg.bund.de

Line of Work 'Data Integration' Co-Chairs:

Nathalie Delattre, Belgium

National Geographic Institute (IGN)
nathalie.delattre@ngi.be

Markus Jobst, Austria

Federal Office of Metrology and Surveying (BEV)
markus.jobst@bev.gv.at

More information on our website:

<https://un-ggim-europe.org/working-groups/working-group-data-integration/>



Thank you for your attention!



UN-GGIM
EUROPE

UNITED NATIONS
COMMITTEE OF EXPERTS ON
GLOBAL GEOSPATIAL
INFORMATION MANAGEMENT

10th JOINT UN-GGIM: EUROPE – ESS – UNECE MEETING
on the integration of statistical and geospatial information

Report from UN-GGIM: Europe Line of Work on ‘Data Integration’

