

# Tenth Plenary Meeting of UN-GGIM: Europe

## Report from UN-GGIM: Europe Line of Work on 'SDG'



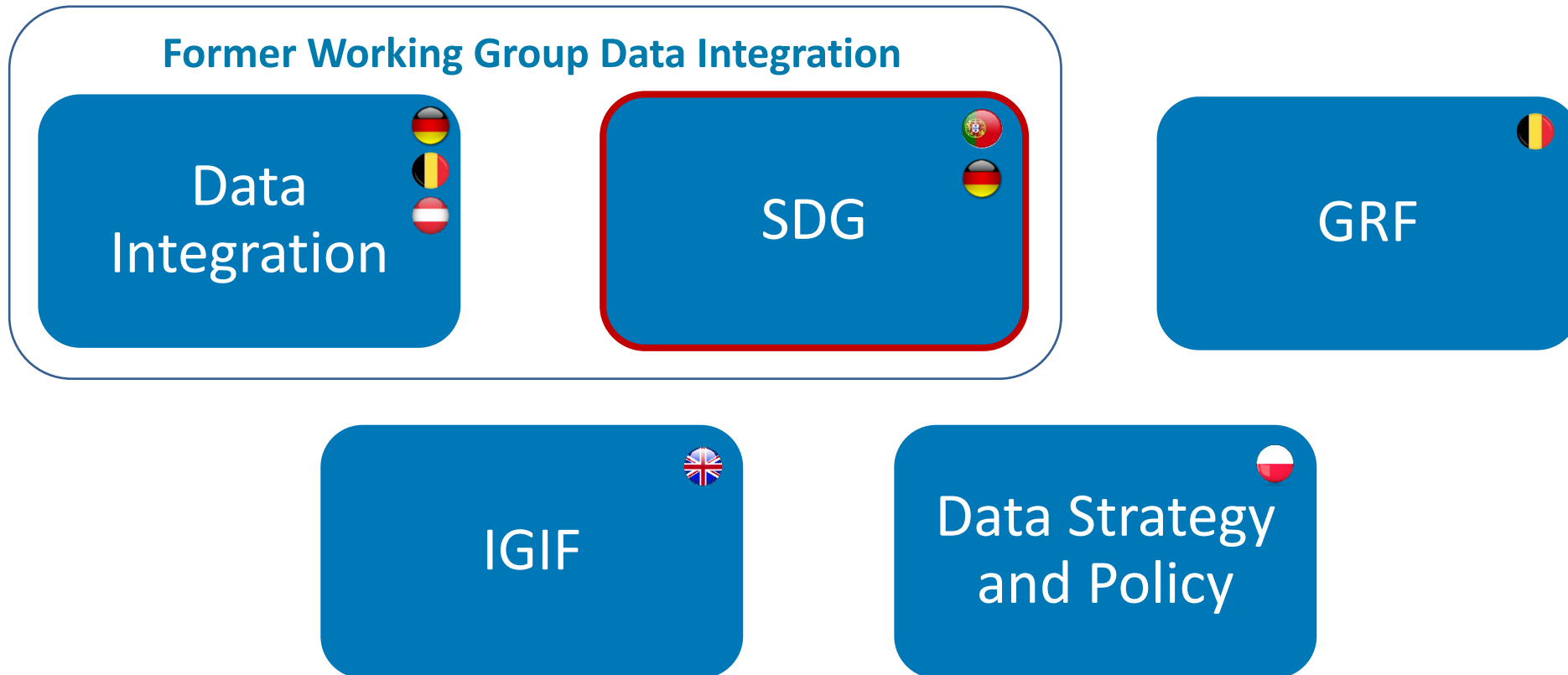
**UN-GGIM**  
**EUROPE**

UNITED NATIONS  
COMMITTEE OF EXPERTS ON  
GLOBAL GEOSPATIAL  
INFORMATION MANAGEMENT

Francisco Vala  
NSI Portugal  
22 November 2023



# UN-GGIM: Europe – the new work plan (2022-2025)





© [CC BY-NC](#)

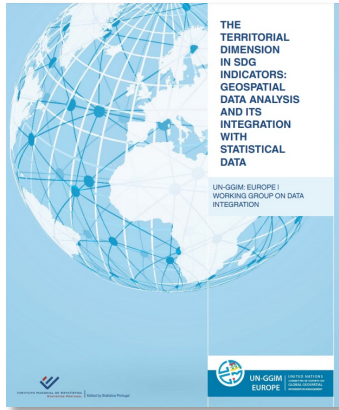


UN-GGIM: EUROPE

UNITED NATIONS COMMITTEE OF EXPERTS ON  
GLOBAL GEOSPATIAL INFORMATION MANAGEMENT

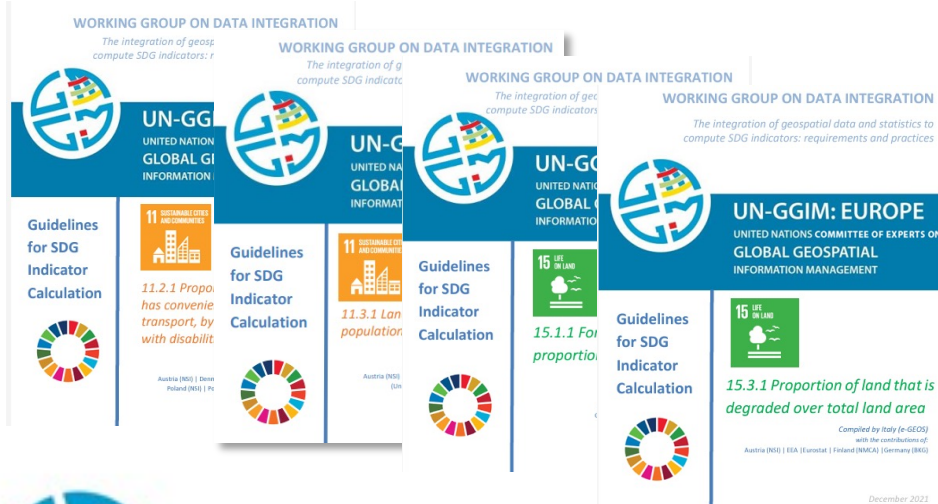


# Line of Work 'SDG'



## Work Plan 2017 – 2019 | Deliverables on geospatial analysis for SDG indicators

In-depth report on **The territorial dimension in SDG indicators**, addressing the **contribution of geospatial data analysis** and its integration with statistical data at a **Global, European and National** perspective based on the analysis of selected SDG indicators



## Work Plan 2019 – 2022 | Deliverables on computing SDG indicators

**Stand-alone documents**, providing methodological, operational and technical **guidance** in the use of geospatial data and statistics to compute SDG indicators, with a **European and National perspective**, and reflecting on solutions which may increase granularity



# SDG calculation | Overarching conclusions Work plan 2019 - 2022

PAN - EUROPEAN

AUTHORITATIVE GEOSPATIAL

STANDARDS & INTEROPERABILITY STATS

PAN-EUROPEAN PRODUCTS MAKE IT POSSIBLE TO COMPUTE SDG INDICATORS

DATA SOURCES SERVE MORE THAN ONE SDG INDICATOR

ADMINISTRATIVE BOUNDARIES ARE CORE FOR COMPARABLE CROSS-COUNTRY RESULTS

HARMONISED TERRITORIAL TYPOLOGIES GUARANTEE COMPARABILITY

AUTHORITATIVE DATA ON TRANSPORT NETWORKS IS CRUCIAL

STABILITY IS KEY FOR EO DERIVED PRODUCTS

ACCOUNTING FOR BIAS SHOULD BE CONSIDERED WHEN DERIVING STATISTICS FROM EO

COORDINATE SHARED KNOWLEDGE AND RESOURCES TO DEAL WITH EO

NATIONAL DATA SOURCES CAN PROVIDE ADDITIONAL MEANINGFUL INSIGHTS



© [CC BY-NC](#)



UN-GGIM: EUROPE

UNITED NATIONS COMMITTEE OF EXPERTS ON  
GLOBAL GEOSPATIAL INFORMATION MANAGEMENT



# Line of Work ,SDG' – Work plan



- To compile and put together **use cases/operational examples** and produce **recommendations/guidelines** on the calculation of SDG indicators
  - To evaluate and assess the use of relevant national geospatial data as **open data**
  - To provide **national show cases** for the presentation of relevant SDG indicators
  - To promote and conduct **webinars / guided discussions** on specific SDG indicators and/or cross-cutting methodological issues and solutions
  - To support and promote **capacity building and development initiatives** on SDG indicator calculations
- **Link to global IAEG-SDG WG GI: Inter-agency and Expert Group on SDG Indicators: Working Group on Geospatial Information**



UN-GGIM: EUROPE

UNITED NATIONS COMMITTEE OF EXPERTS ON  
GLOBAL GEOSPATIAL INFORMATION MANAGEMENT



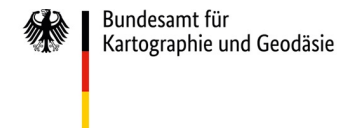
# Line of Work ,SDG' – Webinar series



- The underlying **rationale** translates a narrative thread focusing on previous findings, data sources and methods, data integration and policy needs.
- **Each webinar was coordinated by a different institution and several institutions contribute to them**, by giving a broad perspective of the subjects discussed.

- Concept note with main content of the webinar
- Open and guided Q&A
- Evaluation report with main outcomes and findings
- Recording and presentations available on website:

<https://un-ggim-europe.org/un-ggim-europe-webinar-series/>



UN-GGIM: EUROPE

UNITED NATIONS COMMITTEE OF EXPERTS ON  
GLOBAL GEOSPATIAL INFORMATION MANAGEMENT





# Line of Work ,SDG' – Webinar series



## Setting the scene: Previous findings | Sources | Integration | Policy needs

1	<b>Showcasing the added value of geospatial and statistical data integration to compute SDG indicators</b>	E-GEOS   Statistics Sweden   DG Regio   EEA   Statistics Portugal	25 April ✔	<b>Statistics Portugal</b> Francisco Vala
2	<b>Earth Observation and SDG: uses cases and workflows</b>	EEA   EuroGeo   EuroGeographics	23 May ✔	<b>European Environmental Agency</b> Stefan Jensen & Jose Rubio
3	<b>United Nations Geospatial Network Data Hub: One UN Geospatial Situation Room</b>	UN Geospatial Network   UNECE   EFGS   JRC	15 November ✔	<b>Eurostat</b> Ekkehard Petri
4	<b>Geospatial information for territorial policy support in the context of SDGs</b>	JRC   OECD   DG REGIO	25 October ✔	<b>EC DG-REGIO</b> Hugo Poelman & Joachim Maes





© [CC BY-NC](#)



UN-GGIM: EUROPE

UNITED NATIONS COMMITTEE OF EXPERTS ON  
GLOBAL GEOSPATIAL INFORMATION MANAGEMENT



# Line of Work ,SDG'– from webinars to reflection and debate



- Territorial and thematic disaggregation of SDG indicators
- Need of a concise authoritative set of pan-European geo datasets
- Open, machine-readable data: standards and interoperability
- EO data:
  - Guidance on further environmental SDG indicators
  - Common issues and solutions
- Constraints related to budget, skills and lack of digitalization persist in institutions
- Global contribution and specific European context



Moving from SDG targets monitoring to information to support interpretation and action towards the 2030 Agenda



UN-GGIM: EUROPE

UNITED NATIONS COMMITTEE OF EXPERTS ON  
GLOBAL GEOSPATIAL INFORMATION MANAGEMENT



# Line of Work ,SDG' – Next steps



- To evaluate the global outcome of webinars with the evaluation reports
- To find gaps and requirements of SDG calculation worth to be tackled by UN-GGIM: Europe in the future
- To use synergies and establish a substantial and fruitful cooperation with:
  - **IAEG-SDG: WGGI:** Inter-agency and Expert Group on SDG Indicators: Working Group on Geospatial Information
  - **UN EG ISGI:** Expert Group on the Integration of Statistical and Geospatial Information
  - **UNECE** data integration and SDG initiatives
- To strengthen the link to the global initiatives on SDG calculation issues

**Lisbon Meeting**

15-16 April  
2024



UN-GGIM: EUROPE

UNITED NATIONS COMMITTEE OF EXPERTS ON  
GLOBAL GEOSPATIAL INFORMATION MANAGEMENT



# Line of Work ,SDG' – Main contacts

## Working Group Lead / Chair:

Pier-Giorgio Zaccheddu, Germany

Federal Agency for Cartography and Geodesy (BKG)

[pier-giorgio.zaccheddu@bkg.bund.de](mailto:pier-giorgio.zaccheddu@bkg.bund.de)

Sabine Afflerbach-Thom, Germany

Federal Agency for Cartography and Geodesy (BKG)

[sabine.afflerbach-thom@bkg.bund.de](mailto:sabine.afflerbach-thom@bkg.bund.de)

## Line of Work Leads / WG Co-Chairs:

Francisco Vala & Célia Ferreira, Portugal

Statistics Portugal

[francisco.vala@ine.pt](mailto:francisco.vala@ine.pt) & [celia.ferreira@ine.pt](mailto:celia.ferreira@ine.pt)

## More information on our website:

<https://un-ggim-europe.org/working-groups/low-sustainable-development-goals/>



# Thank you for your attention!



**UN-GGIM**  
**EUROPE**

UNITED NATIONS  
COMMITTEE OF EXPERTS ON  
GLOBAL GEOSPATIAL  
INFORMATION MANAGEMENT

Tenth Plenary Meeting of UN-GGIM: Europe

Report from UN-GGIM: Europe Line of Work on 'Data Integration'

