



Federal Agency for
Cartography and Geodesy



Putting the UN-IGIF in practice in Germany

Experiences and Achievements

Gwendolin.Seidner@bkg.bund.de

Executive Unit - International Affairs

Federal Agency for Cartography and Geodesy (BKG)

The background on the NSDI activity

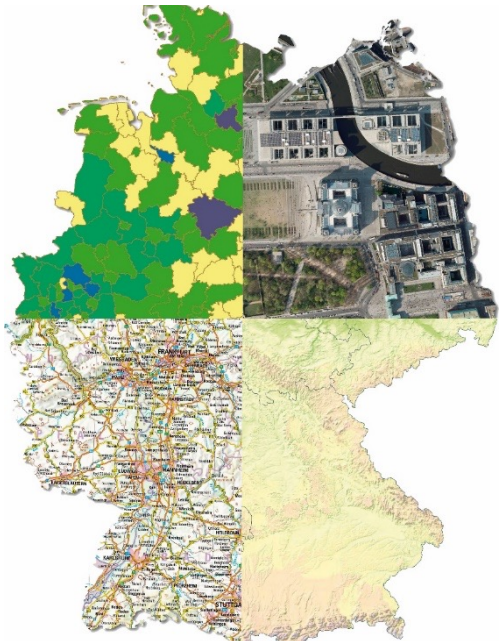
Geospatial information management has been focused on for a long time.
The National Spatial Data Infrastructure has been established 2005.

**There already is a National Geospatial Strategy in Germany
→ NGIS**

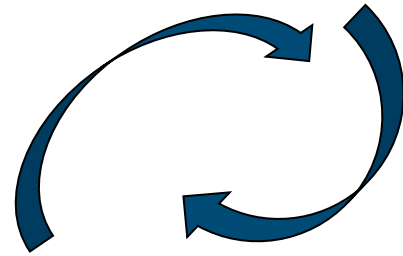
The National Geospatial Information Strategy was drawn up in dialog with
industry and science

The NGIS describes a vision for the geospatial information sector for the
year 2025

**Our goal for the national implementation of the IGIF:
Adding an international perspective and comparability to the
existing national strategy**



Key organizations/Stakeholders developing the CAP for Germany

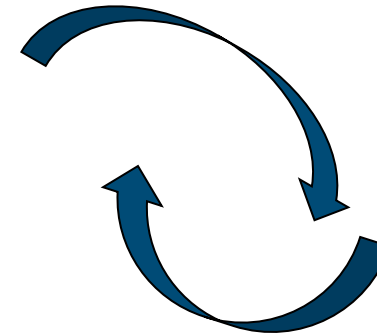
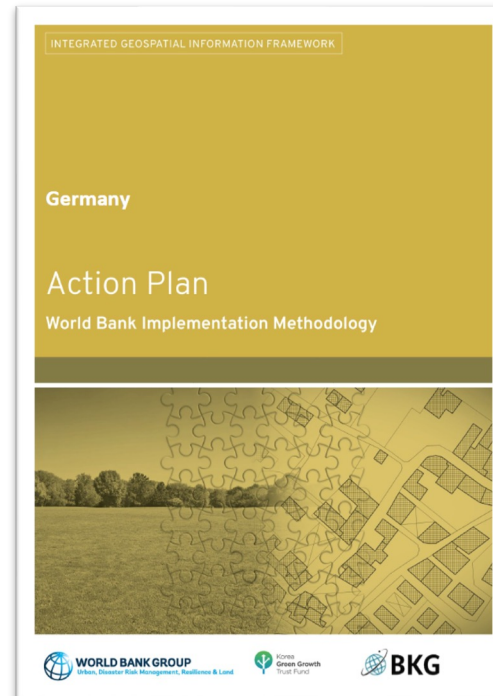


The Working Committee of the Surveying Authorities of the Laender of the Federal Republic of Germany (AdV)



Wir geben Orientierung.

Federal Mapping Agency



German SDI

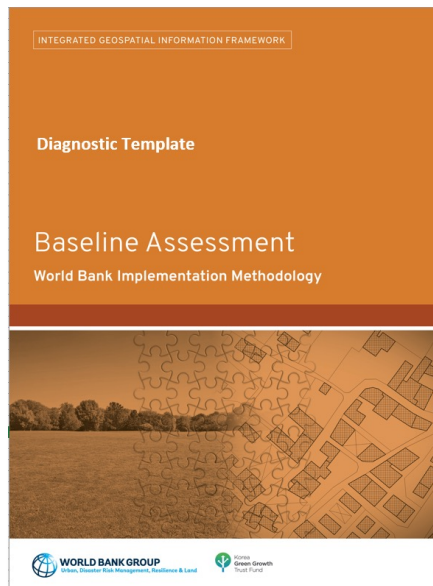
Baseline Assessment for the IGIF CAP - Tools



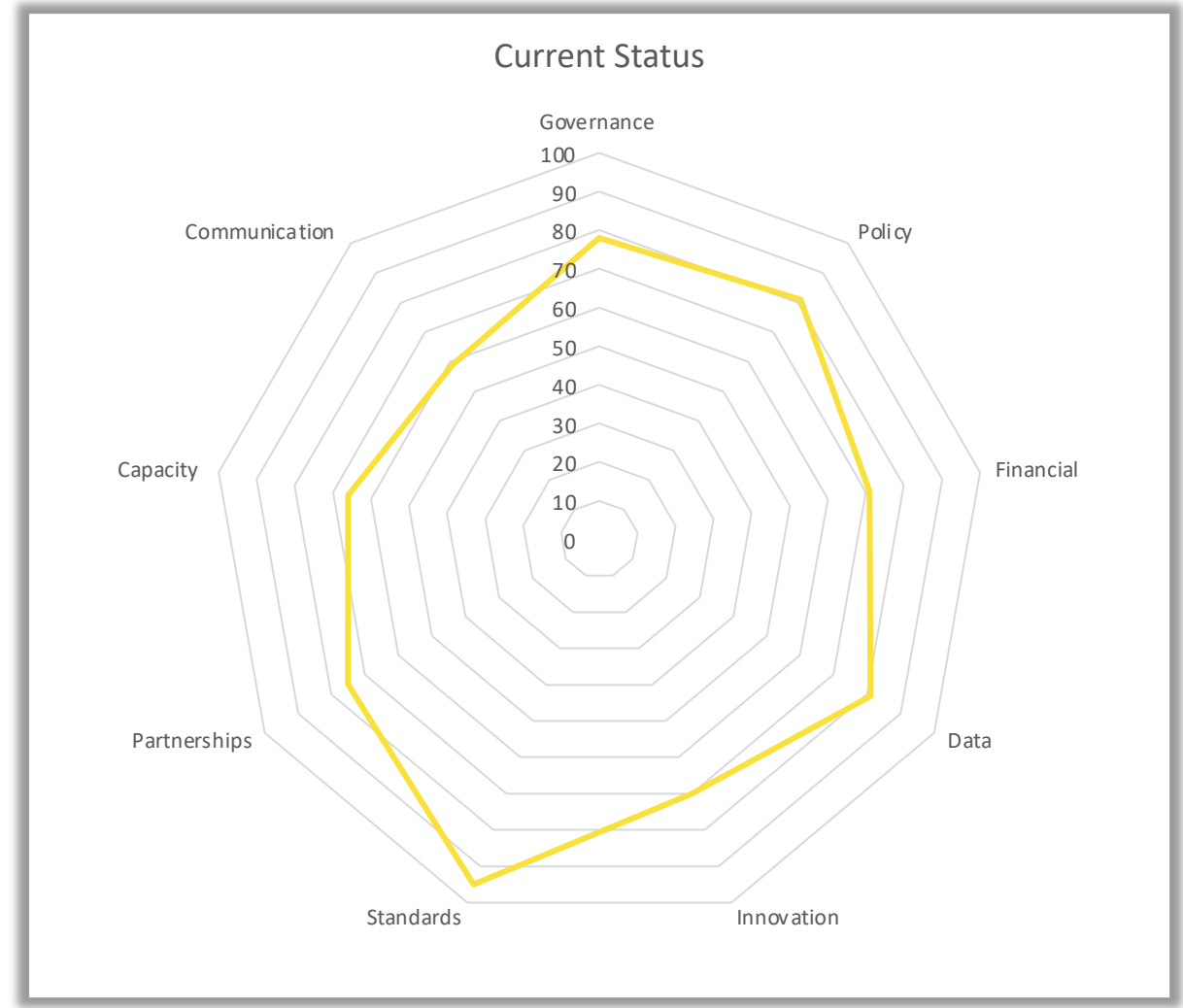
Source: World Bank

Results of the baseline assessment

- Comparability due to uniform procedure
- “Strengths and weaknesses” visually depicted
- Focus of current situation for all Pathways



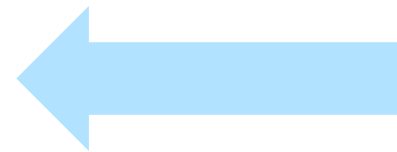
	Current Status
Governance	78
Policy	81
Financial	71
Data	81
Innovation	70
Standards	95
Partnerships	75
Capacity	66
Communication	59
Overall Score	76



Examples of developed IGIF actions

Total actions	Covered actions by GDI-DE	New actions covered by BKG
27	23	4

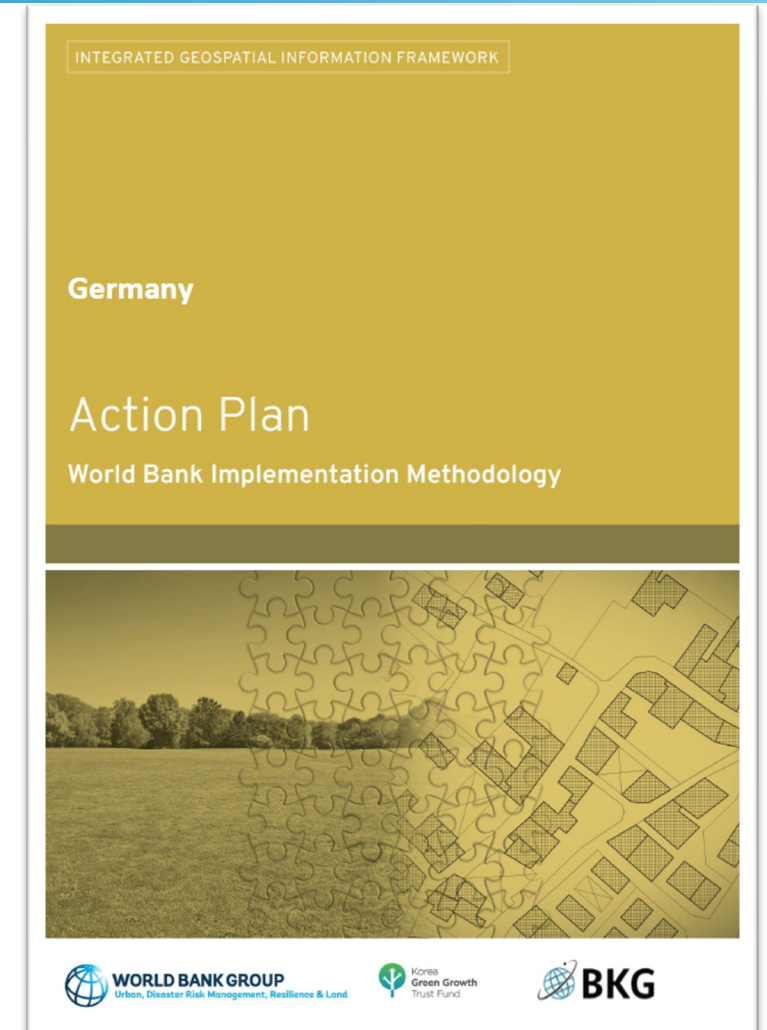
- 1.5: Increase interaction with the global geospatial community
- 7.2: Identify "lighthouse projects" to demonstrate successful collaboration in integrating core geospatial data with other thematic data
- 8.5: Provide geospatial data management training and ongoing professional development programs
- 9.3: Promote the importance of geospatial information for evidence-based decision making and for the achievement of the Sustainable Development Goals (SDGs) of the Agenda 2030



What we achieved...

Country-Level-Action-Plan

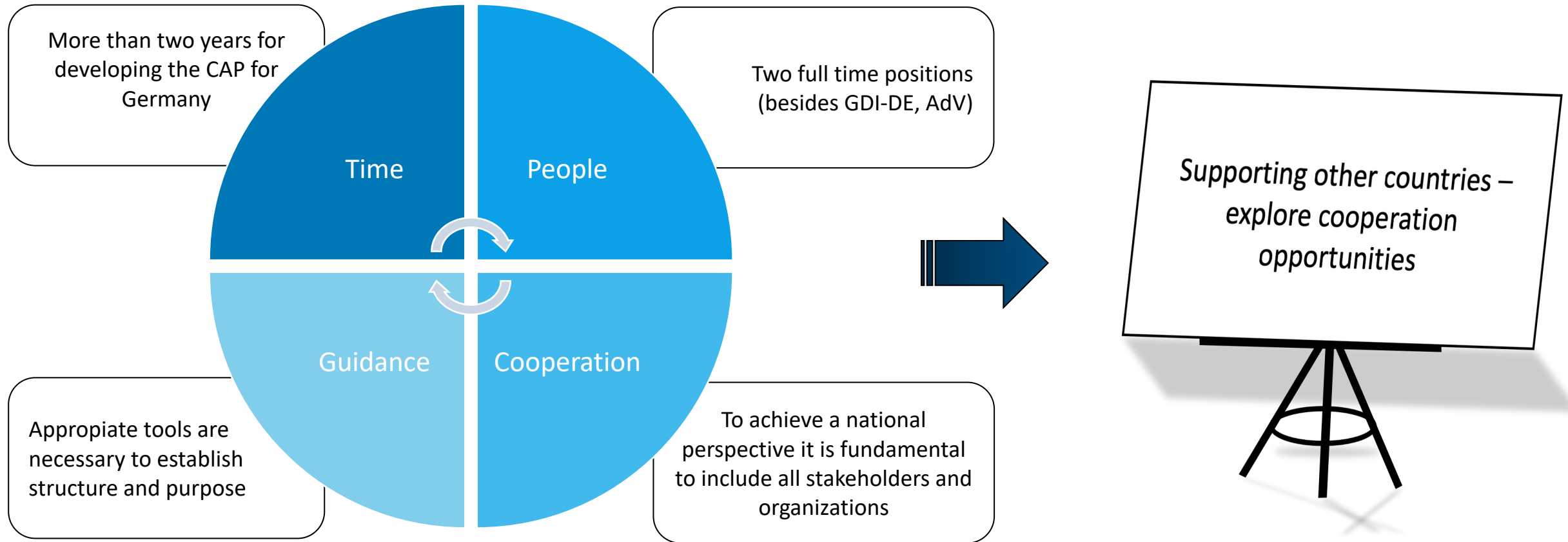
- Baseline Assessment ✓
 - Overview of national geospatial stakeholders and institutions and their responsibilities ✓
 - Derived actions based on the IGIF-Pathways ✓
- Decision and adoption of the action plan as part of the national strategy in May 2022
- Due to the already existing geospatial strategy and other long existing activities, contents have been shortened



IGIF CAP for Germany: Advantages for Germany

- ✓ UN-GGIM perceives BKG as a reliable partner
- ✓ International commitment is applied nationally
- ✓ IGIF actions are embedded in national GDI-DE (SDI)
- ✓ Comparisons and solutions for other countries are shown (role model)
- ✓ Implementation of NGIS is meaningfully and substantially supported
- ✓ NGIS goals are confirmed
- ✓ Perception of NGIS & GDI-DE (SDI) has visibly increased internationally
- ✓ International networking of NGIS/GDI-DE (SDI) can give new impulses for national level

Experiences and outcomes





Federal Agency for
Cartography and Geodesy



Country-level Action Plan:

<https://ggim.un.org/IGIF/part3.cshtml>

Social Media:

<https://www.linkedin.com/company/bkg-bund>

BKG Website



Personal Contact:

Gwendolin.Seidner@bkg.bund.de
Executive Unit - International Affairs
Federal Agency for Cartography and Geodesy (BKG)