



Schweizerische Eidgenossenschaft
Confédération suisse
Confederazione Svizzera
Confederaziun svizra

wissen wohin
savoir où
sapere dove
knowing where

Next Generation Map

swisstopo

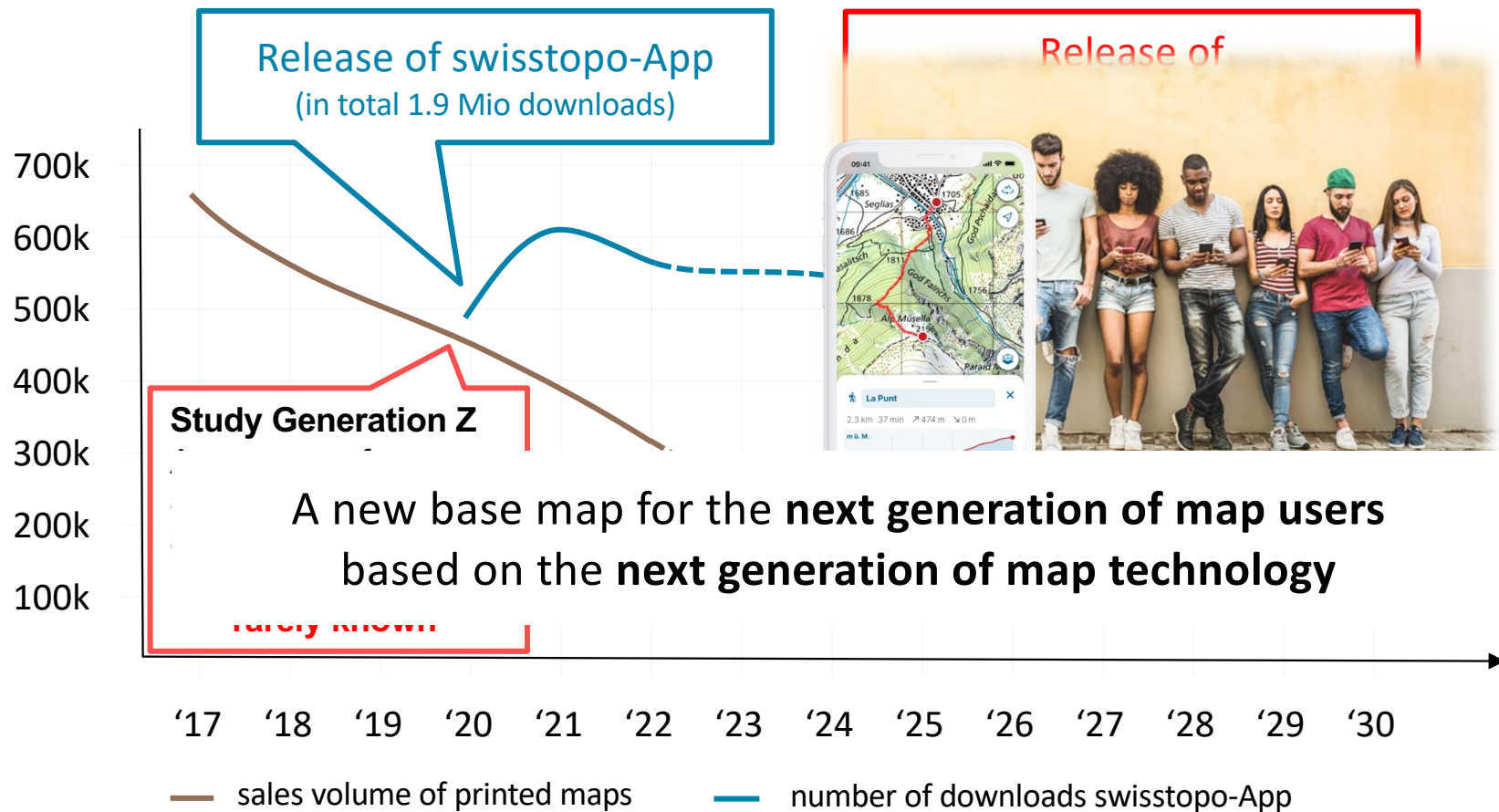


UN-GGIM Europe
The way towards a Geospatial Knowledge Infrastructure

Webinar, 19 June 2023

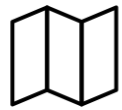


Motivation for Next Generation Map





Map Usage is Changing



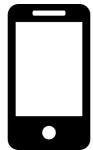
static

sustainable

Classic Maps



Web Maps



interactive

dynamic

interacting

adaptive

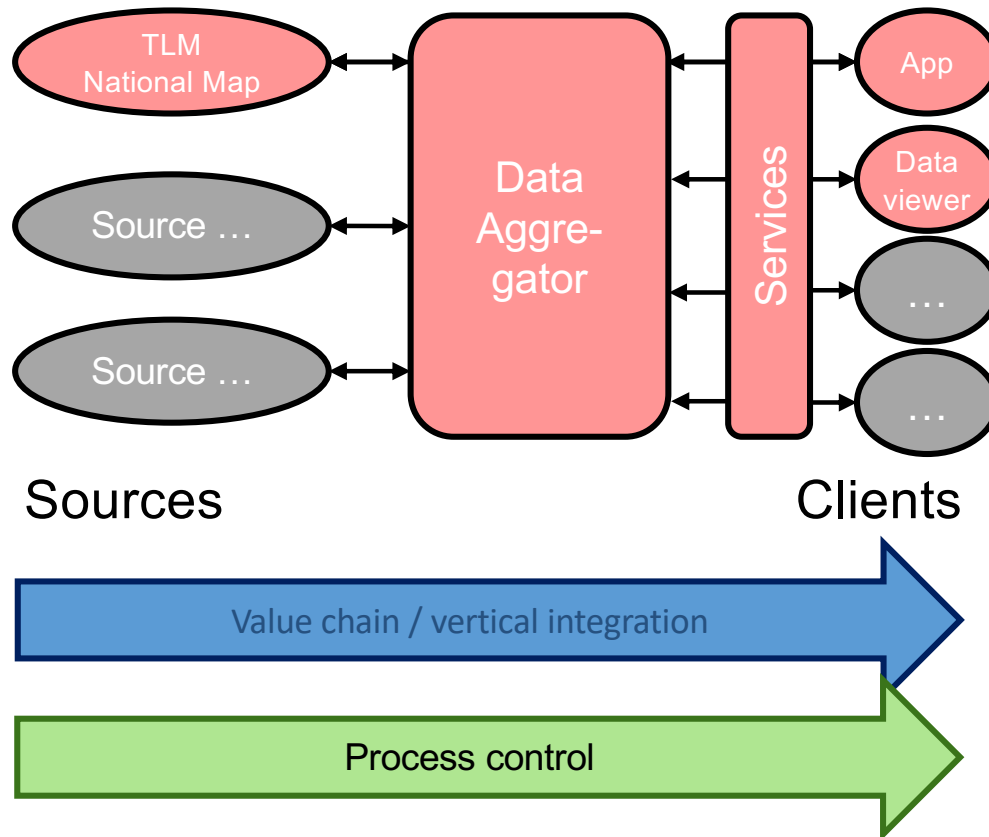
Mobile Maps

Next Generation Map

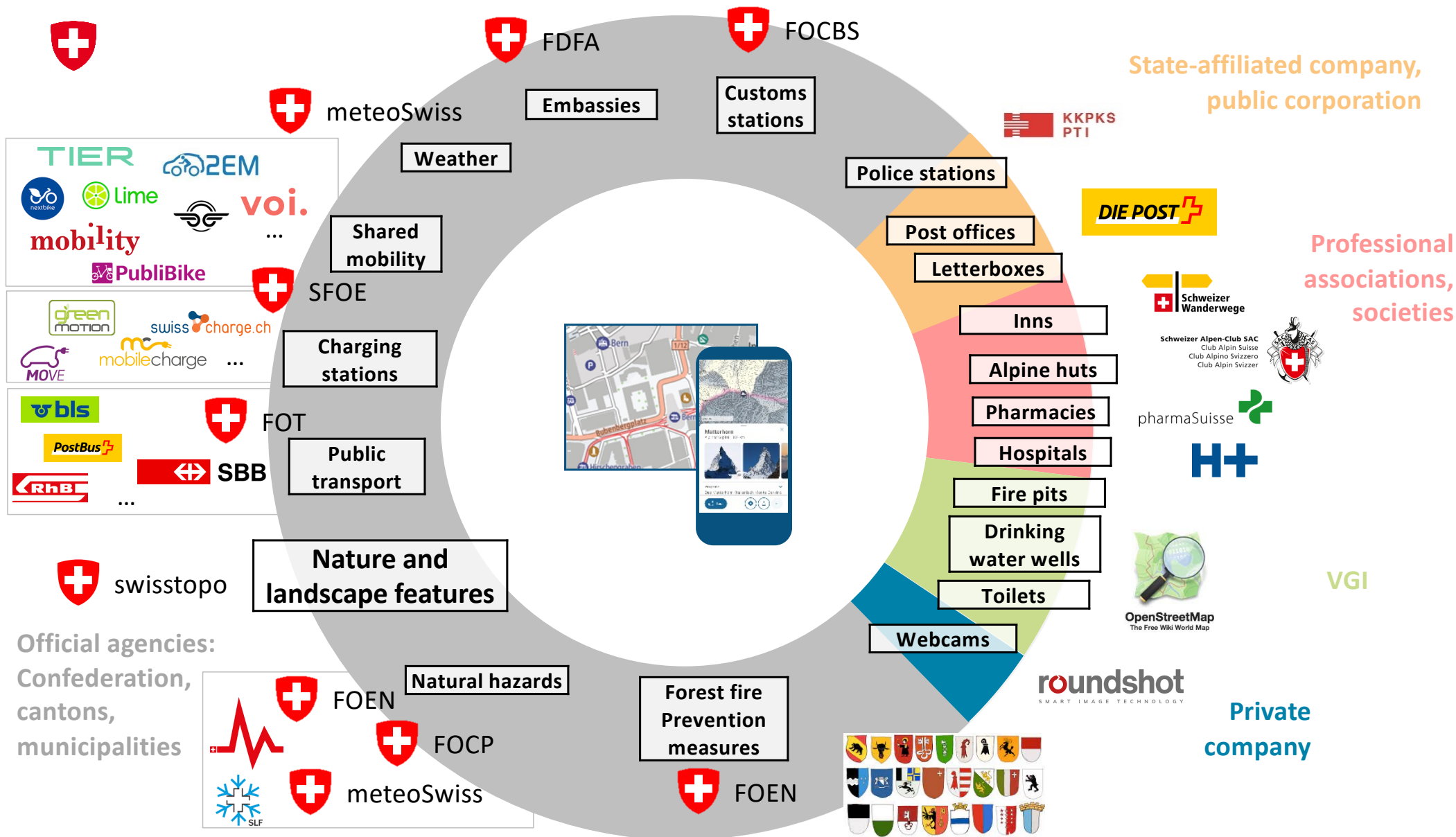
- Map usage primarily in a mobile context
- Changed user needs:
 - Need for real time information
 - Need for information beyond what swisstopo can provide itself
 - Map from static information medium to interface for further information / enable map elements for user interaction
- Technology:
 - Mobile devices enable interaction between humans, systems and user context



From Data to Knowledge Process

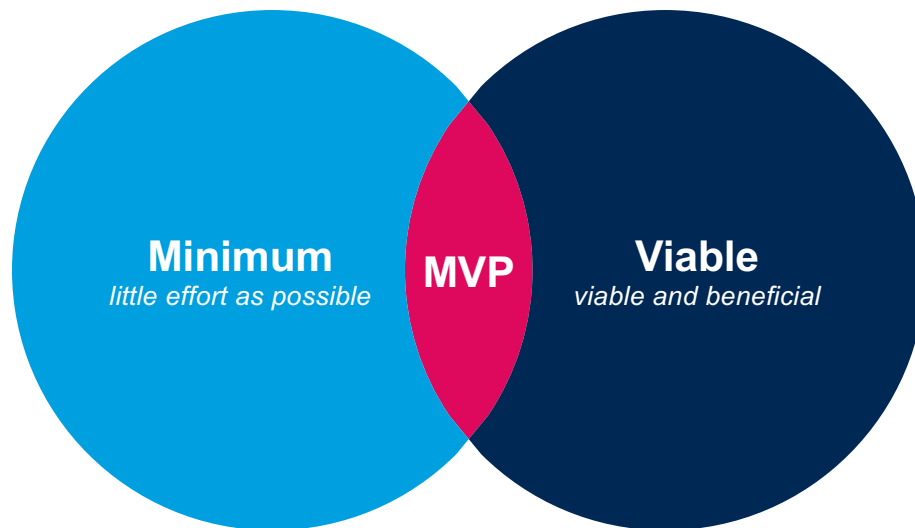


- **From data-driven to user-driven perspective (What is useful prevails)**
→ Changing the role of cartography from map provider to data aggregator
- Wide range of data is available and free of use (official data increasingly available as OGD, open data such as OSM worldwide)
- Data can be efficiently harvested with modern technologies and linked
- Ability to connect information, collaboration as a key factor (building your own ecosystem)





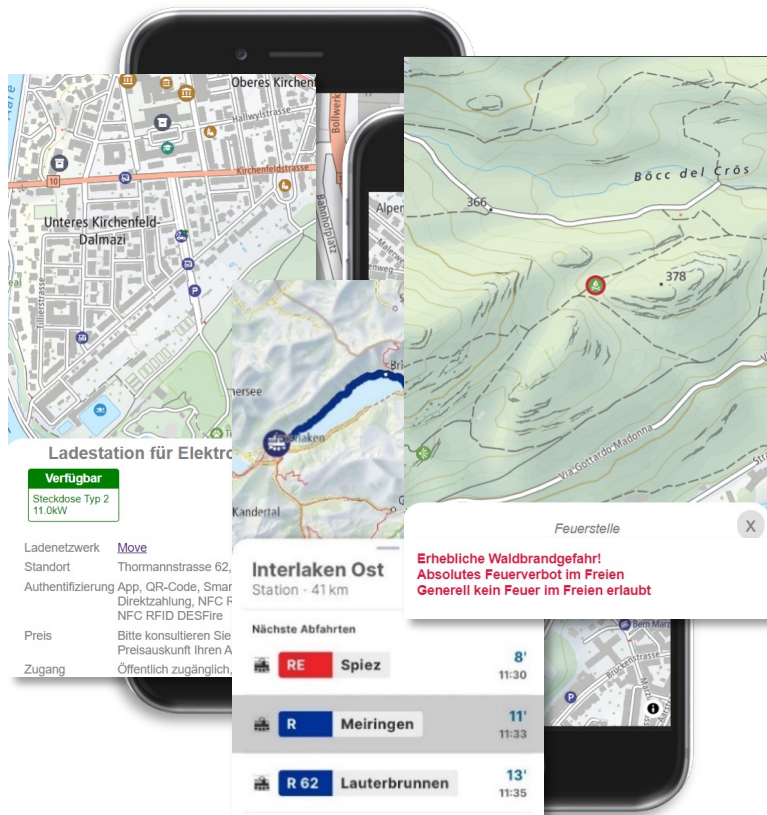
Minimum Viable Product



- Functional and beneficial for the problem and the target market
 - Launch in Q4/2023
 - Update on a quarterly basis
 - Continuous development based on user feedback
-



Key-Features



- Mobile-optimised map design
- High-quality vector-based terrain representation
- Linking of additional information
- Real-time data for specific topics
- Offline availability <3 GB for CH
- Global coverage
- User-oriented app integration and functionality
- Social media connection
- Simple and quick implementation of variants, e.g. for the army
- Public map service for integration into third-party applications (OGD)



Thank you for the attention

Karsten Pippig

Project Coordinator

Product Management - Cartography

Phone: +41 58 481 49 54

Email: karsten.pippig@swisstopo.ch

