

June 2022



Aligning Data and Technology with Policy

Steven Ramage, Chief Engagement Officer,
GEO Secretariat

Ninth Plenary Meeting, UN-GGIM: Europe



- Earth observations are data and information collected about our planet.
- Space-based or remotely-sensed data, in situ data, models and citizen science.
- Earth observations are **neutral**, **consistent** and enable **coherence** in policy, governance and decisions.
- They monitor change over time providing insights and evidence for decision making.





in numbers



110+

COUNTRIES



700+

AGENCIES



140

PARTICIPATING
ORGANIZATIONS



19

ASSOCIATES

Evidence-based activities



GLOBAL POLICY FRAMEWORKS

Convention on Biological
Diversity, Paris Agreement,
Sendai Framework,
UN 2030 Agenda,
New Urban Agenda,
Ramsar Convention,
Minamata Convention



NATIONAL CONSIDERATIONS

Measurement, Reporting and
Verification
National Inventories
Policy Briefs
Spatial Planning
Technical Guidance for National
Adaptation Plans (NAPs)



FINANCE

Biodiversity Finance
Climate Finance
ESG Reporting
Nature Markets
Spatial Finance

Results, impact and value: GWIS



Result

The European Forest Fire Information System (EFFIS) supports wildfire systems in 43 countries, saving nations hundreds of millions of Euros in reduced losses. EFFIS at the global level was developed into the Global Wildfire Information System (GWIS), a joint initiative of Copernicus and GEO.



Impact

Every year, 500k hectares of natural areas are burnt across the European Union. GWIS provides prediction of wildfire danger, seasonal fire weather monitoring, updates on ongoing fires daily, wildfire severity, and assessment of wildfire damages.



Value

Avoiding environmental and economic losses in Europe is estimated at around €390 million per year. A 10% reduction of environmental damage worldwide would avoid about €13 trillion of economic losses.

GEO Focus Areas

GEO works to improve the availability, access, understanding and use of Earth observations for the benefit of society.

1

**Sustainable
Development**



2

Climate Action



3

**Disaster Risk
Reduction**



4

**Urban Resilience
(newest work)**



Open knowledge elements



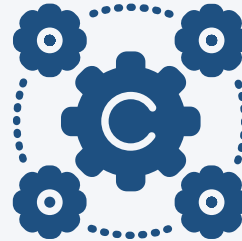
1

Open Data



2

Open Software



3

Open Standards



4

Open Science



**SDG 11 Indicators Reporting in
Poland: The Role of Earth
Observations and Dasymetric
Maps**

[Read More >](#)



**SDG Indicator 11.3.1
Reporting in South Africa**

[Read More >](#)



**Supporting the Uganda Bureau
of Statistics in its National
Census Preparations**

[Read More >](#)



**Urban Resilience Observatory
for the Evaluation of SDGs of
the Municipality of
Thessaloniki**

[Read More >](#)



**Using Earth Observation Data
to Calculate Open Spaces for
Public Use in Colombia**

[Read More >](#)



**Using Earth Observation Data
to Calculate Sustainable
Urbanization in Colombia**

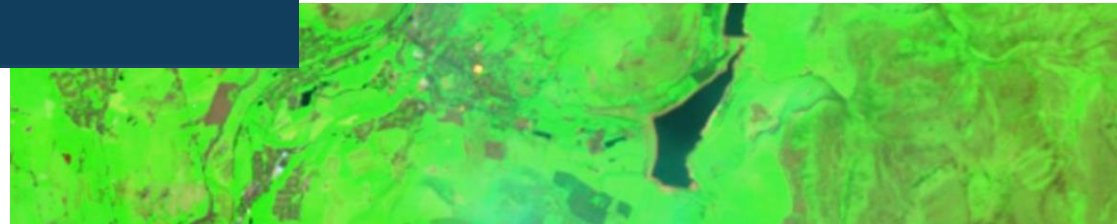
[Read More >](#)



**Using Earth Observation Data
to Calculate SDG Indicator
11.3.1, Ratio of Land
Consumption to Population
Growth Rate in UAE**

[Read More >](#)

eotoolkit.unhabitat.org

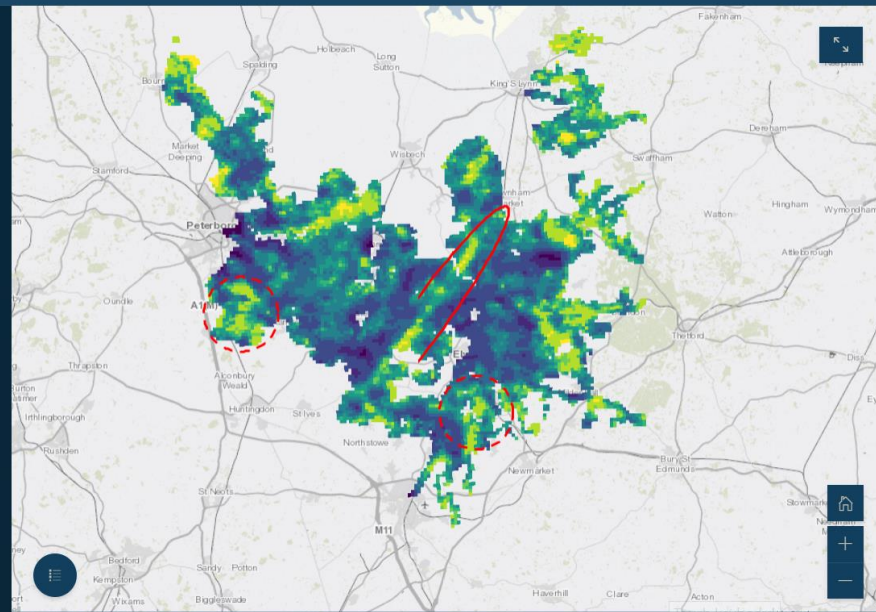


Monitoring the Fire

Multiple satellite sensors were able to monitor the blaze throughout. Heat sensors on the satellite were able to clearly reveal where the fire was still burning.

image: False colour image of Saddleworth Moor during the fire.

What are Peatlands? Earth Observation Pennines Saddleworth Moor Cambridgeshire Fens The Project



This map shows peat health in the Cambridgeshire Fen region (lighter colours represent healthier peat).

The areas circled in red are either nature reserves or sites of Special Scientific Interest. We can see that the peat in these regions is healthier than in the surrounding farmland.

This highlights the current trade-off between using land for agriculture and as a carbon store. However, this is quickly changing - many farmers now adopt modern farming methods that are more sustainable and better for the environment.



Digital Earth
AFRICA



Open and Free Data

- Interoperability
- Privacy and Integrity



Digital Earth
AFRICA

Operational Service

- Continental-scale
- Sustainable
- Domain expertise



Accountability and transparency

- Responsive to African priorities
- Agile, nimble and actions oriented



Diversity and inclusion

- Multi-sector perspectives
- Span data communities
- Foster collaboration



Countries are empowered



Development activities are more effective



Lives are improved



Digital transformation is advanced

 **>\$2bn*** of benefits predicted for the African continent



\$500 million

Earth Observation industry
accelerated growth



\$900 million

Agricultural
productivity boost



\$900 million

unregulated gold mining
detection and prevention



Marine Observation

\$212 million



Disaster Risk Reduction

\$74 million



Public Health

\$113 million



Renewable Energies

\$27 million



Oil & Gas

\$15 million



Security and Civil Protection

\$96 million

DIGITAL EARTH AFRICA'S GOVERNING BOARD








Dr Albina Chuwa

Ms Alison Rose
(Co-Chair)

Dr Oliver Chinganya

Hon. Paula Ingabire
(Co-Chair)

Mr Steven Ramage

Dr Tidiane Ouattara























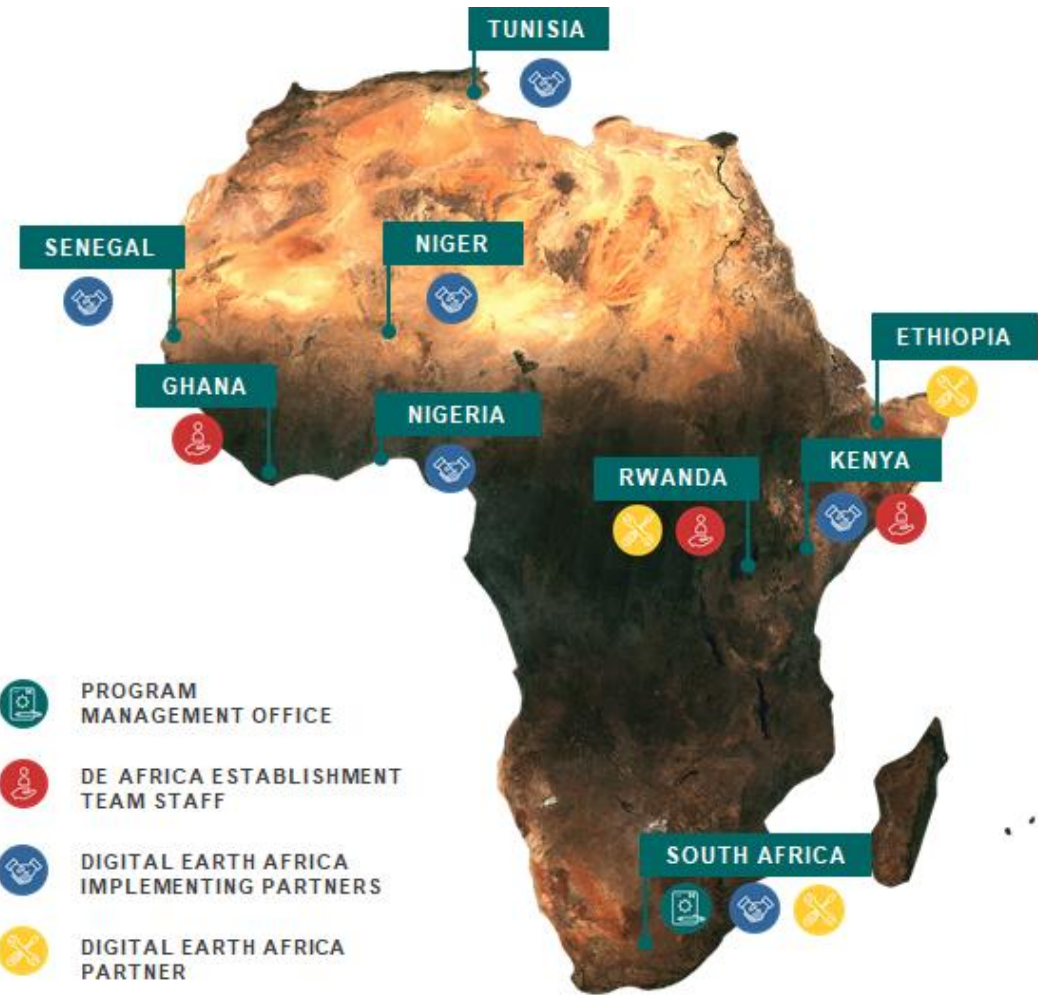










TUNISIA

SENEGAL

NIGER

GHANA


NIGERIA

ETHIOPIA


RWANDA

KENYA


SOUTH AFRICA




PROGRAM MANAGEMENT OFFICE



DE AFRICA ESTABLISHMENT TEAM STAFF



DIGITAL EARTH AFRICA IMPLEMENTING PARTNERS



DIGITAL EARTH AFRICA PARTNER



[English](#)[Spanish](#)

0 UPCOMING TRAININGS	465 ON-DEMAND WEBINARS	53 SELF-PACED COURSES	6 PAST LIVE SESSIONS	30 REGISTERED PARTNERS
Register	Watch	Enroll	Watch	Visit



Welcome to the Inter-American Academy of Geosciences & Applications

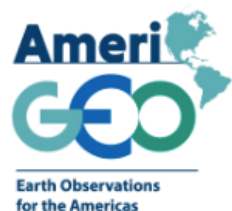
Partners in the Inter-American community are working to build capacity to advance the use of Statistical, Earth Observation, Geospatial and other Data to improve understanding and promote data-driven decision-making.



AmeriGEO is proud to host the Inter-American Academy of Geosciences & Applications on behalf of a growing network of public and private institutions, academia, and commercial partners.

[Our Partners](#)

THE INTER-AMERICAN ACADEMY STRATEGIC PARTNERS



AmeriGEO

AmeriGEO is the regional representative of the Group of Earth Observations (GEO) in the Américas that seeks to promote collaboration and coordination among the GEO members and other organizations, "to realize a future wherein decisions and actions, for the benefit of the region, are informed by coordinated, comprehensive and sustained Earth observations and information".

[Website](#)[Facebook](#)[Twitter](#)[MORE INFO](#)

UN-GGIM:Americas

UN-GGIM: Americas established in accordance with the United Nations Economic and Social Council Resolution E/RES/2016/27, strengthening institutional arrangements on geospatial information management adopted on 27 July 2016.

The Regional Committee determines the relevant regional issues for the management of geospatial information, and takes the necessary measures to maximize the economic, social and environmental benefits derived from its use. The foregoing is based on the exchange of knowledge, experiences and technologies by the Member States, which supports the establishment of

[Website](#)[Facebook](#)[Twitter](#)[MORE INFO](#)

Cooperación Latinoamericana de Redes Avanzadas (CLARA)

RedCLARA, a not-for-profit International Law Organisation legally based in Uruguay, is the Latin American space for collaboration and development in education, science and innovation, developing and operating the only Latin-American advanced Internet network, providing regional interconnection and connection to the world through its international links to GÉANT and Internet2 (USA) and, through them, to Africa's advanced networks (UbuntuNet Alliance, WACREN, ASREN), Asia (APAN, TEIN, CAREN) and Oceania (AARNET), among others, in order to benefit the development of science and academia, generating capabilities for intraregional and transcontinental research in all the areas of knowledge, promoting the development of applications

[Website](#)[Facebook](#)[Twitter](#)[MORE INFO](#)

UN-GGIM Academic Network Americas

The UN-GGIM Academic Network Americas (ANA) is a formal body constituted as part of the United Nations Global Geospatial Information Management: Americas (UN-GGIM: Americas). We are the strategic knowledge, research and training arm of it. Our main aim is to promote and strengthen close collaboration between universities (and also academic institutions, research centers) and their national geospatial counterparts for the Americas.

[Website](#)[Facebook](#)[Twitter](#)[MORE INFO](#)

Towards Post-2025 GEO



Multidisciplinary work
producing solutions
for integrated issues



Inclusive
approach across
communities



Results-driven
portfolio with
measurable impact



Digital Public Good
Open innovation,
tools and services

Talk to me: comms, policy work and private sector

@steven_ramage
sramage@geosec.org

