

The background of the slide is a detailed geological image showing various rock formations. On the left, there are dark, layered rock faces. On the right, there are lighter, more complex rock structures with some blue mineral veins. A white geometric pattern of triangles is overlaid on the right side of the image.

Pan-European datasets: Getting ready for the decade of action

Léa Bodossian – SGED-EuroGeographics

CONNECTING YOU TO MAPS, GEOSPATIAL AND LAND INFORMATION FOR EUROPE



#MAPSFOREUROPE

60+  **46**   
members countries
from the whole of geographical Europe

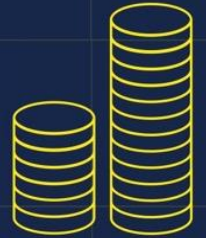


Well-established network for sharing knowledge and expertise



Helping to protect people and the planet by providing critical data for reporting and monitoring the UN Sustainable Development Goals (SDGs)

Members invest
€1.5B
each year in providing official national geospatial data

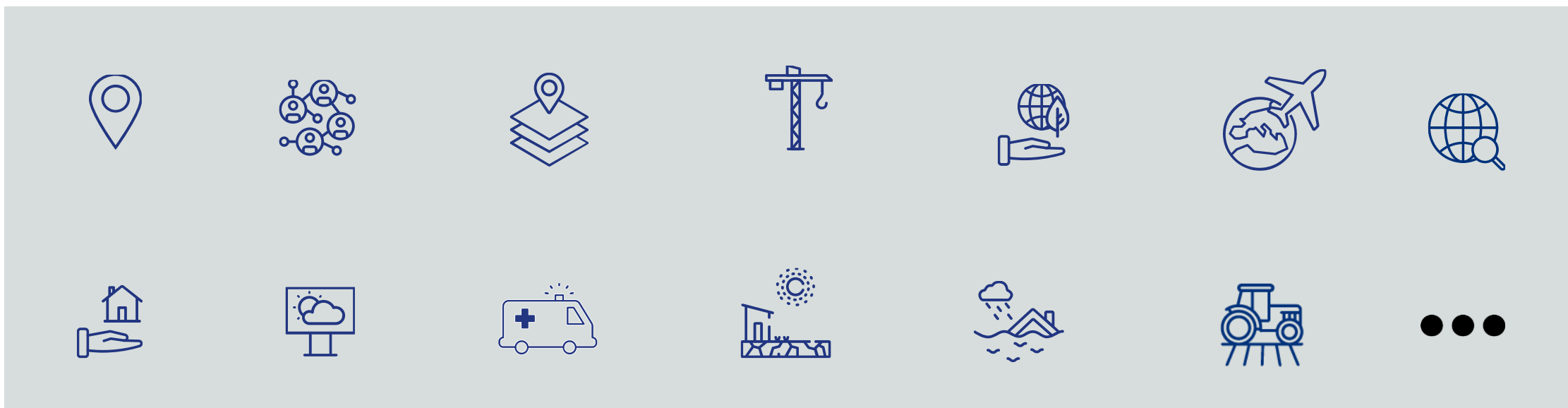


Relied on by European and international institutions, government, businesses and citizens



66,000 
people and over are employed by EuroGeographics members

More than maps



Official Pan-European datasets:

Official geospatial data, harmonised comparable & sharable data, standardised and transparent licensing agreements



EuroBoundaryMap
1:100,000



EuroRegionalMap
1:250,000



EuroGlobalMap
1:1,000,000



EuroDEM

Who are the users?

eurostat 

All of European
Commission services
and Agencies

Other Users

Commercial
organisations,
Third sector
Academia

Why are they using it?

Official

How to keep Official geospatial data relevant to these users ?



An era of open data



A need for free to use
harmonised data



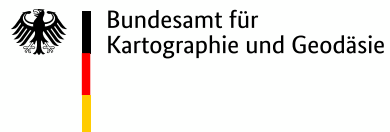
A need for up-to-date
data



Benefits of Open PSI
Directive

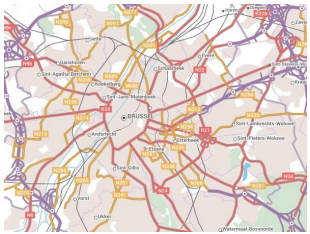
OME is demonstrating how NMCAs contribute to the public good through unique international collaboration

Open Maps for Europe



First delivery of new Data Strategy

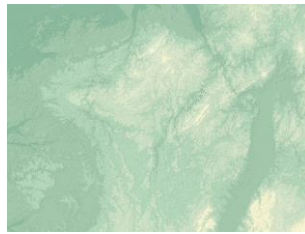
Open Maps For Europe: what's in it?



EuroRegionalMap



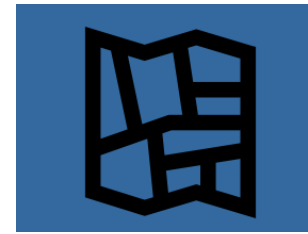
EuroGlobalMap



EuroDEM



Gazetteer



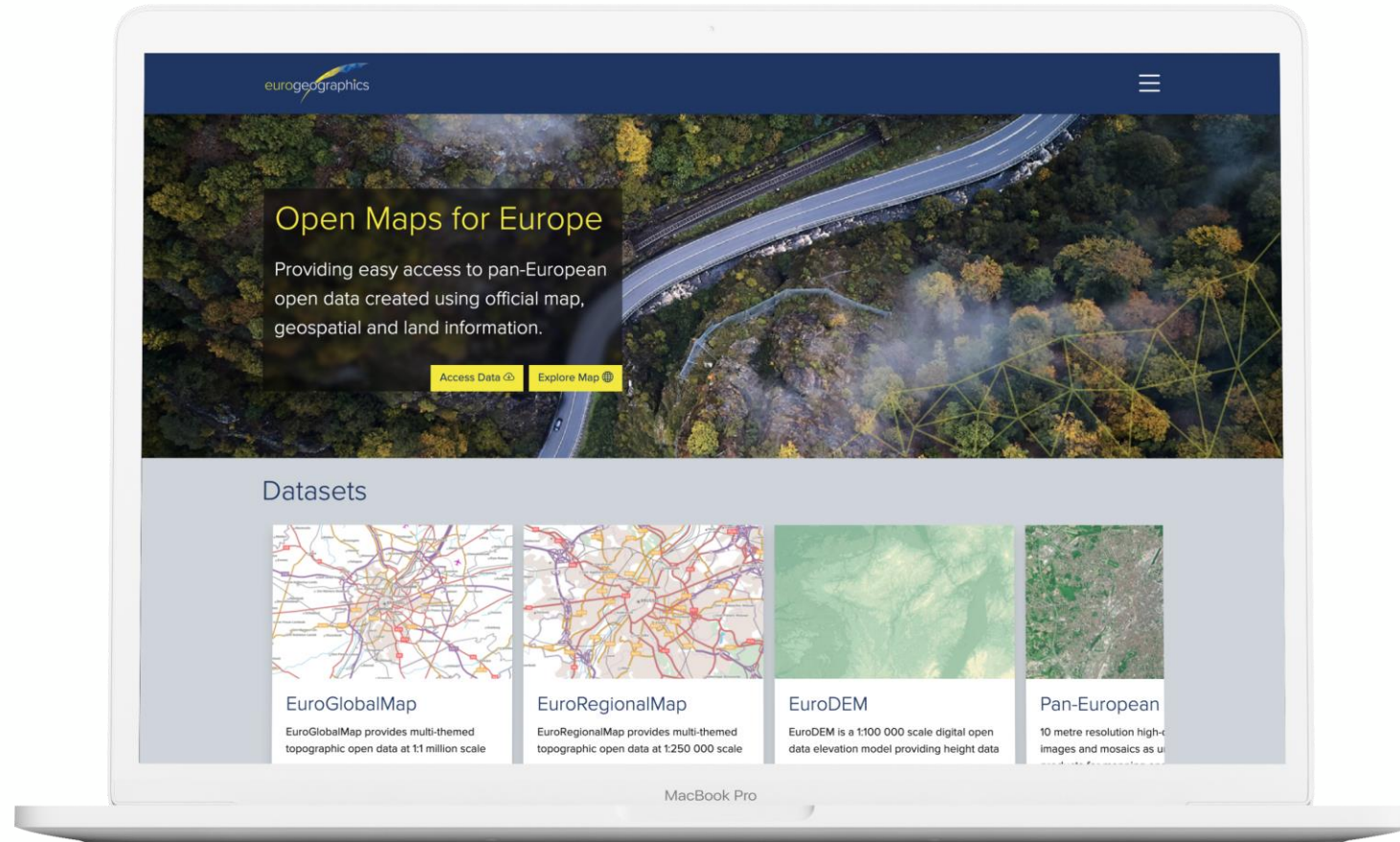
Cadastral Index
Map



Imagery

OME opens these in a single and free to use portal

mapsforeurope.org



www.mapsforeurope.org



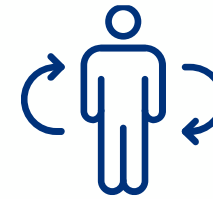
Imagery

TWO ADDITIONAL ITERATIONS + FURTHER DEVELOPMENTS: DEC 2022

Open Maps For Europe: Challenges ahead



**Ensure sustainability:
open vs free at point of use**



Increase the user centric approach



What are policy makers using geospatial data for?

4 types of use



Creation of policies



Statistical needs



Monitoring



Surveillance

What are policy makers using geospatial data for?



Monitoring energy networks



Monitoring environmentally sensitive areas



Developing smart cities



Optimising trajectories



Controlling evolution of pests



Fostering renewable energy



Monitoring crops & harvest



Optimising transport networks



Developing smart transport



Border surveillance



Disaster Management



Controlling evolution of diseases



Evolution of soil



...

What are the requirements?



Harmonised
data



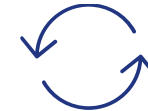
timeliness



Agile



Large scale



Updates



Precision

OME is demonstrating how NMCAs contribute to the public good through unique international collaboration and sets the scenery for further developments

What are the requirements?



Harmonised
data



timeliness



Agile



Large scale



Updates



Precision

OME is demonstrating how NMCAs contribute to the public good through unique international collaboration and sets the scenery for further developments

Thank you

lea.bodossian@eurogeographics.org