



SDG
DATA
ALLIANCE

THE PARTNERS

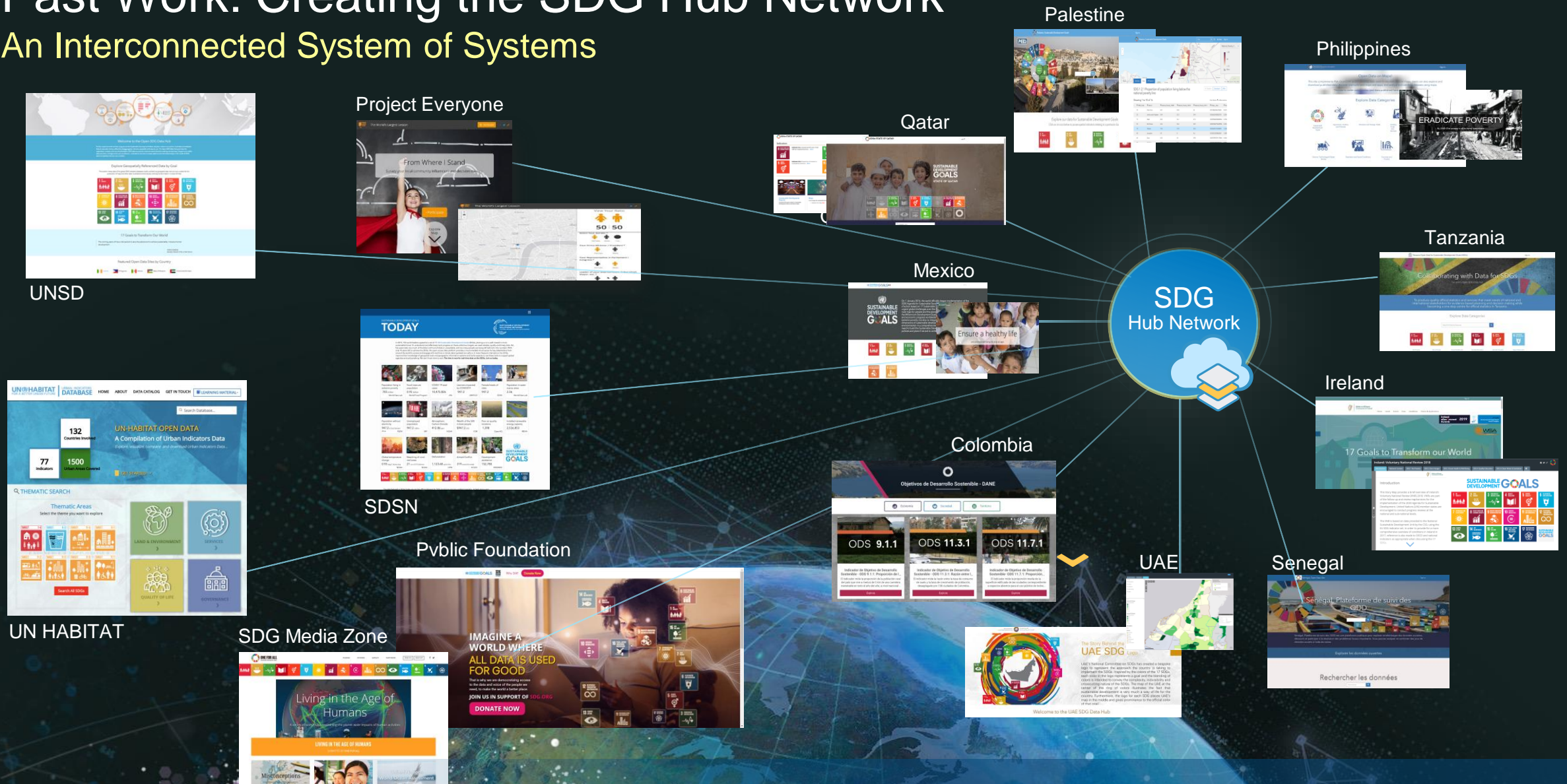


PUBLIC
FOUNDATION



Past Work: Creating the SDG Hub Network

An Interconnected System of Systems



Supporting Global Monitoring & Reporting of the Sustainable Development Goals



A Multi-Stakeholder Partnership



The SDG Data Alliance is an open, community-driven partnership that is working to accelerate the achievement of the SDGs by building capacity with people, technology, and process.

Our work is grounded in the recognition that reducing inequalities of all kinds (SDG-10) is fundamental to achieving all SDGs, and creating a just, healthy, and prosperous world where no one is left behind and everyone can thrive.

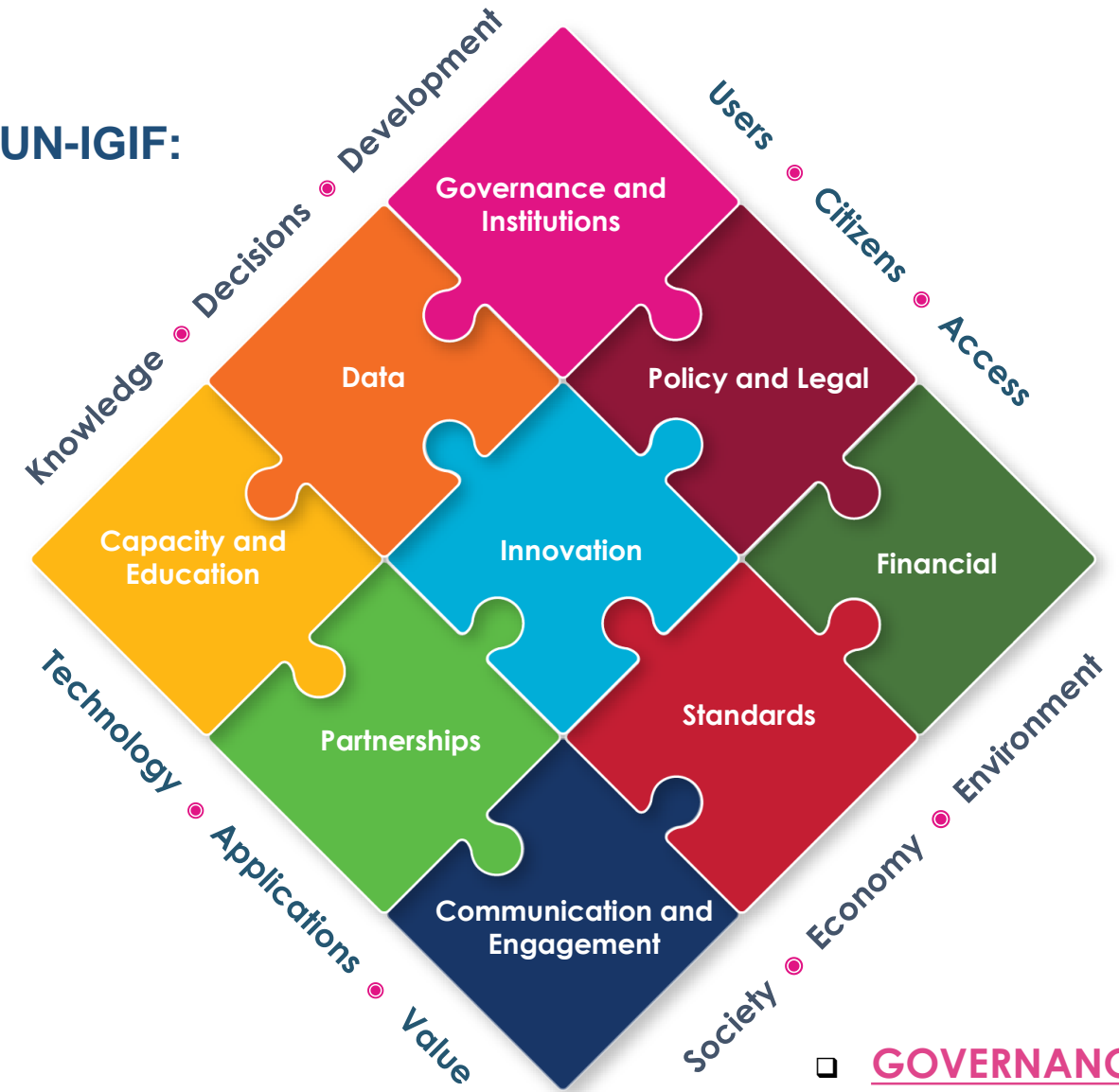
**There must be progress on SDG 10
for all other SDGs to succeed.**
- Michelle Bachelet, UN OHCHR


Summary

Objectives

- **Leverage and strengthen** the in-country expertise from geospatial experts through implementation of the UN-IGIF within and across governmental agencies and organizations leveraging SDG data hubs
- **Address national and global reporting** requirements to report on the SDGs - with specific focus on SDG 10
- **Accelerate achievement of the SDGs** by accurately identifying areas for focus and investment

The UN-IGIF:



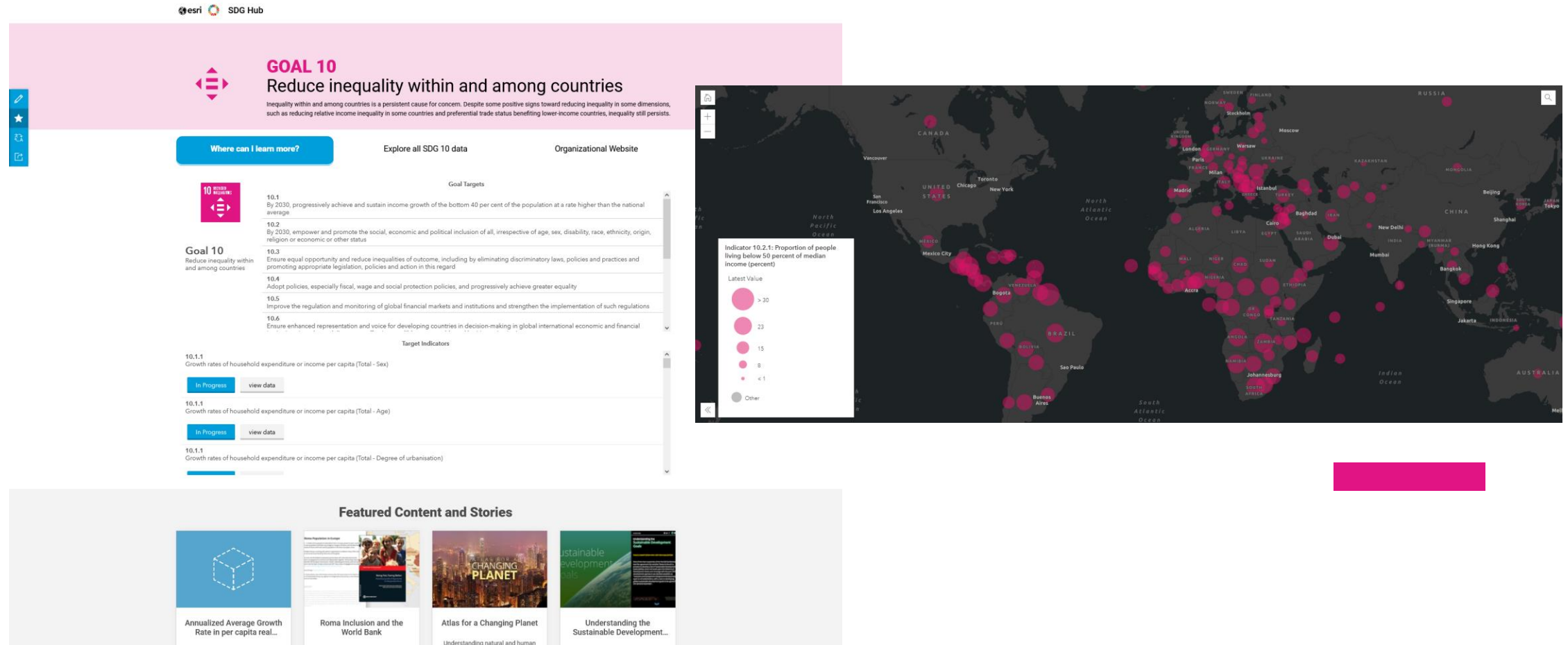
- GOVERNANCE
- TECHNOLOGY
- PEOPLE

Targeting ~17 UN member states:

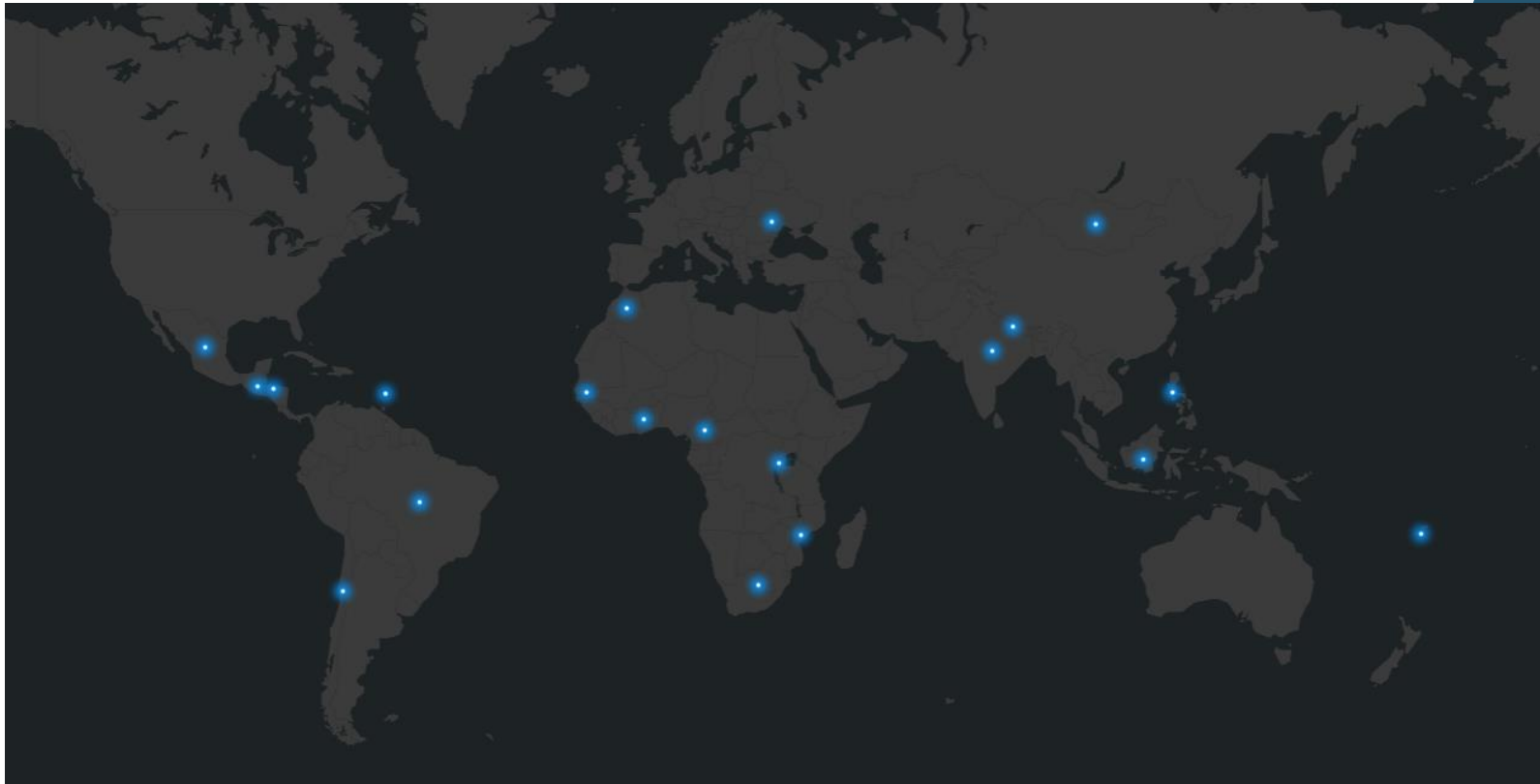
- Implement UN-IGIF thru capacity building and technology implementation
 - Configure and deploy national SDG Data Hubs - open interoperable, standard-based, serviced oriented platform
 - Continuous knowledge and communication activities via the SDG Data Alliance to 2030 and beyond
-


Intended Outcomes

SDG Data Hub: Template



Prospective Member States



- Brazil
- Cameroon
- Chile
- Fiji
- Ghana
- Guatemala
- Honduras
- India
- Indonesia
- Mexico
- Moldova
- Mongolia
- Morocco
- Mozambique
- Nepal
- Philippines
- Rwanda
- Senegal
- South Africa
- St. Lucia





Learn more at:
alliance.sdg.org



SDG
DATA
ALLIANCE



Questions?

Ideas?



SDG
DATA
ALLIANCE

Carmelle J. Terborgh, Ph.D.

Lead Account Manager

Nonprofit and Global Organizations, Esri

cterborgh@esri.com | @geotellus