



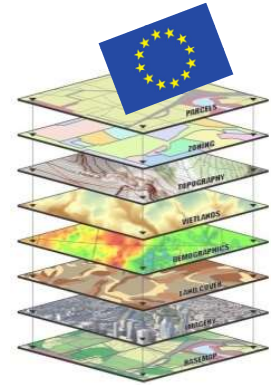
# Update on latest GISCO activities

## Item 8

JOINT UN-GGIM: EUROPE – ESS - UNECE MEETING ON  
THE INTEGRATION OF STATISTICAL AND GEOSPATIAL  
INFORMATION

*Oliver MUELLER*

# GISCO – "GIS of the COMmission"

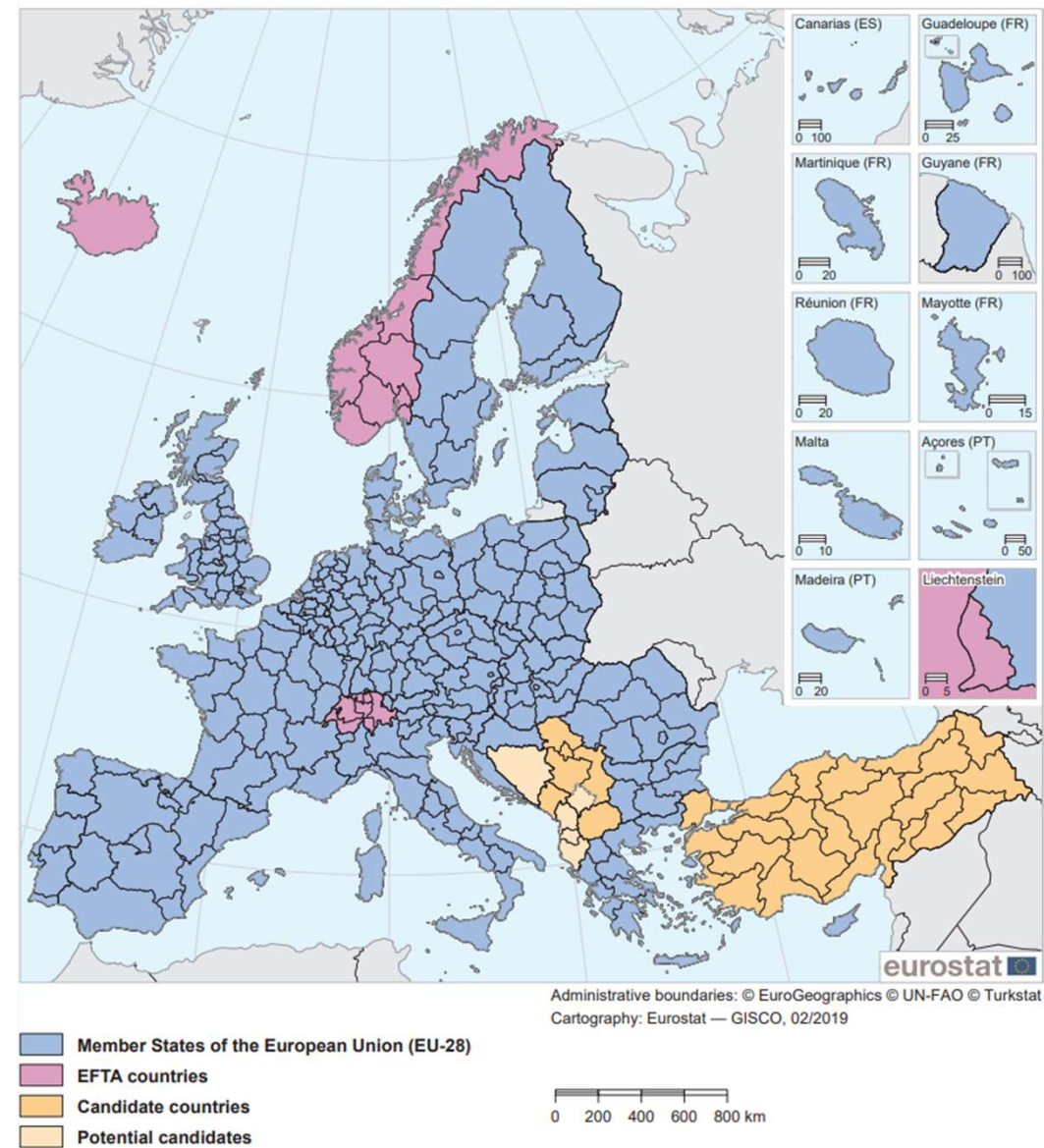


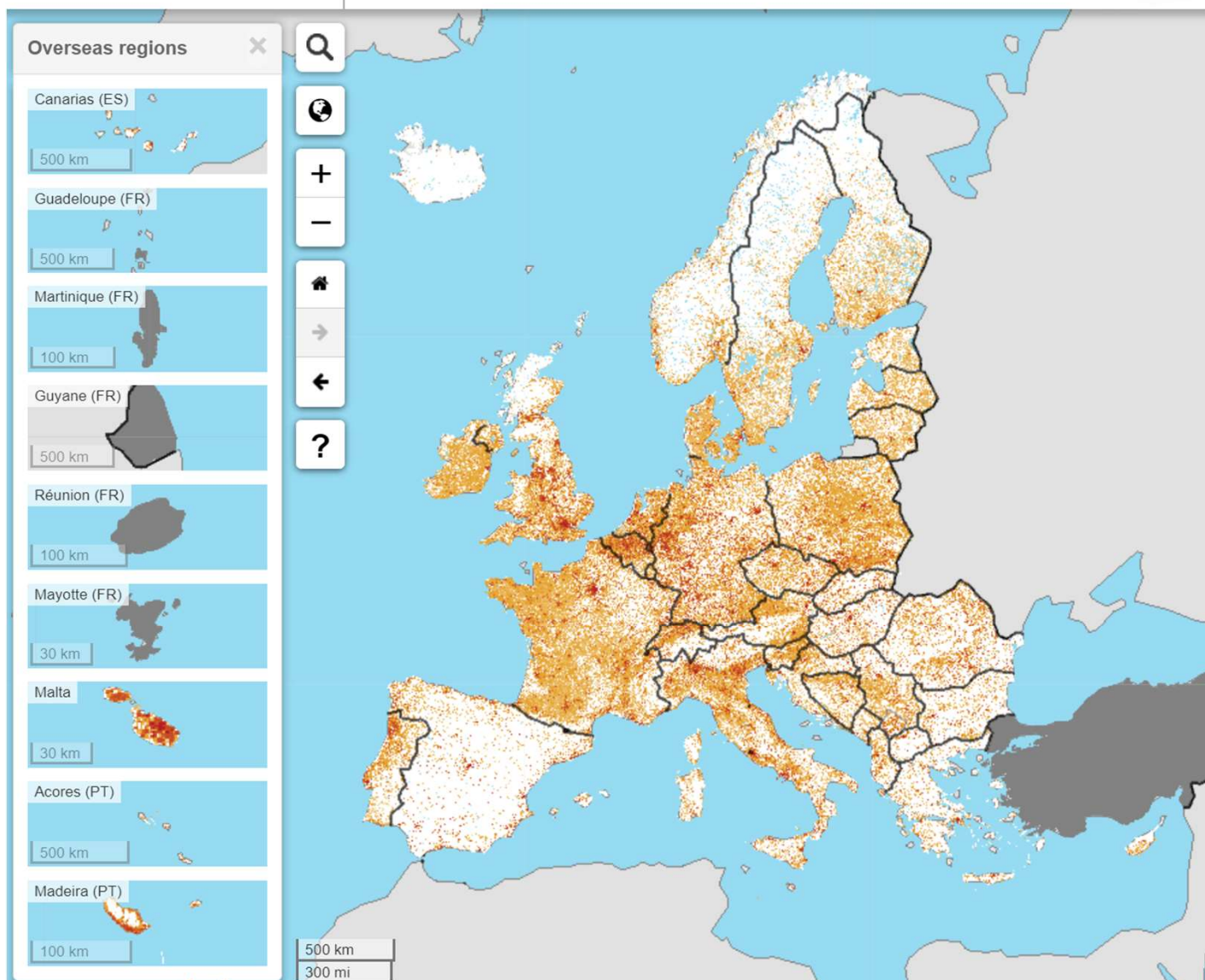
- Permanent service of the European Commission (Eurostat)
- Role: Answers needs of European Commission for geographical information at EU/national/regional levels.
  - Provision of GIS (reference) data, services and software,
  - Support cartographic and spatial analysis activities,
  - Coordinates commission-wide GI activities,
  - Stimulate the use of GIS to support commission activities,
  - Support activities on the integration of statistical and geospatial information.

# GIS reference data

- Statistical/administrative units
  - Countries
  - Regions
  - LAUs
- Population distribution
- Transport networks
- Services

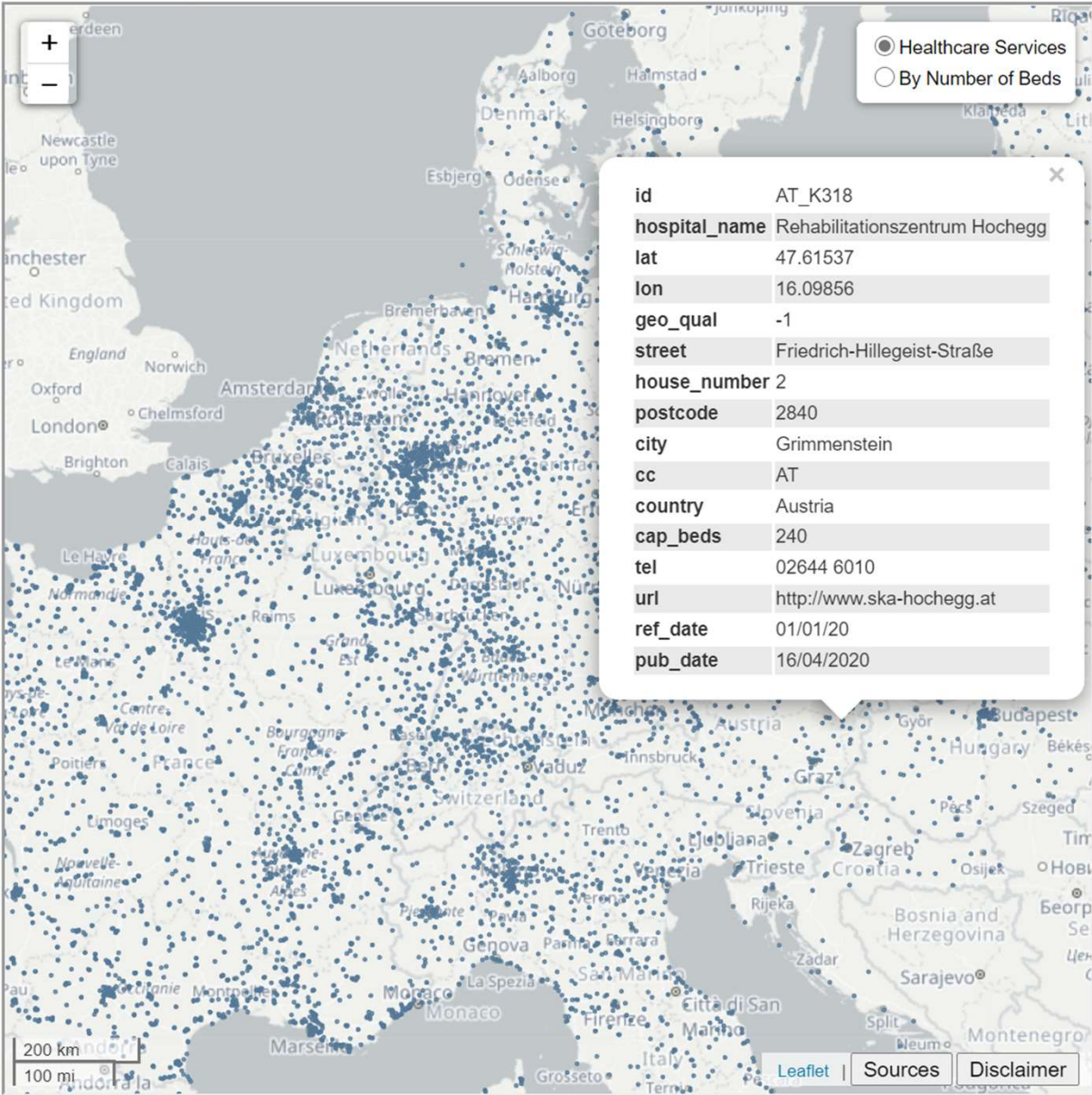
NUTS 2 regions in the Member States of the European Union (EU-28) according to NUTS 2016, with corresponding statistical regions in EFTA countries, candidate countries and potential candidates







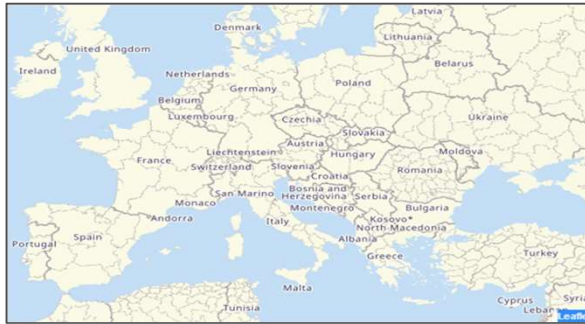
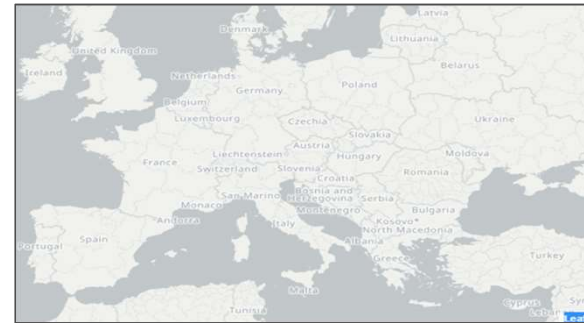
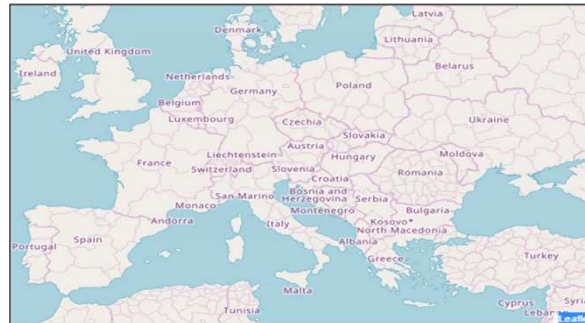
Locations of Healthcare Services in Europe



# Support cartographic and spatial analysis activities

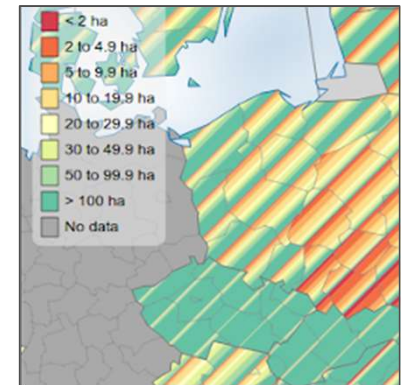
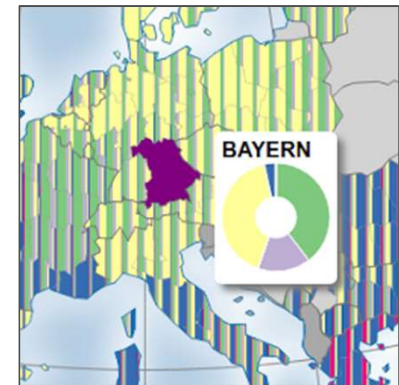
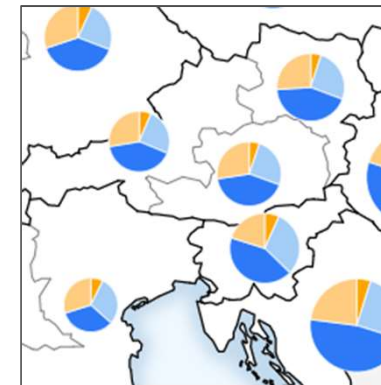
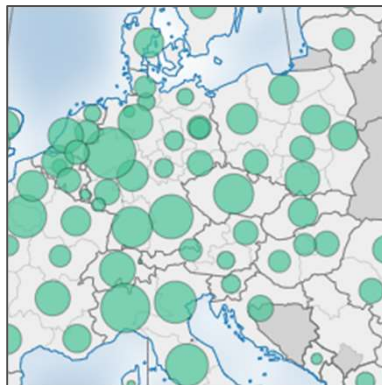
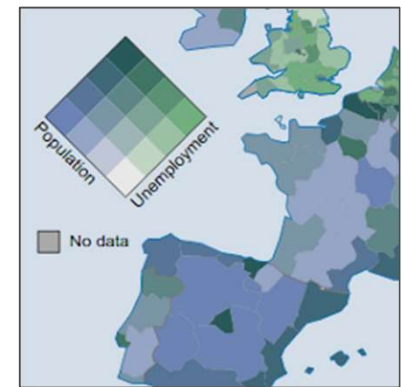
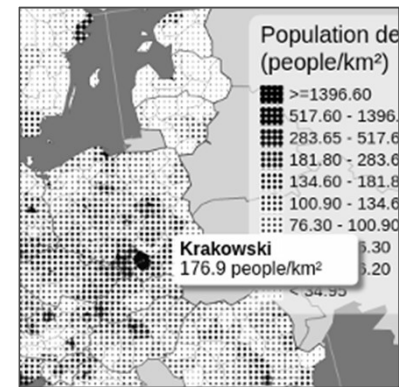
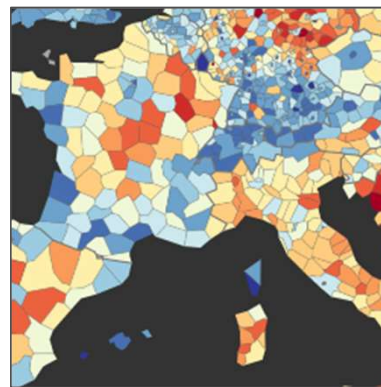
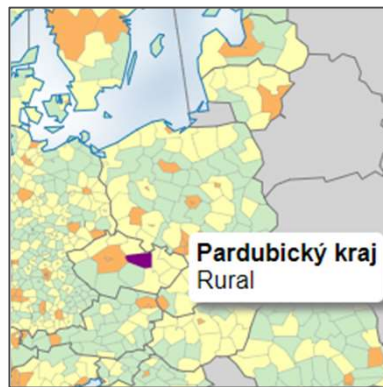
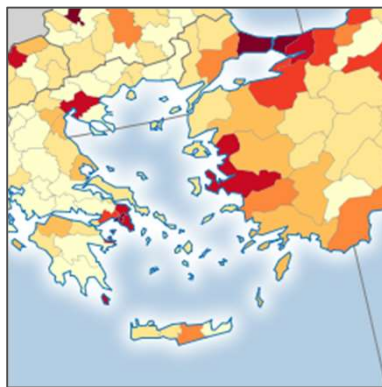
- Background map services
- Javascript libraries
- Grid Visualisations
- IMAGE
- Spatial analysis

# GISCO map background services





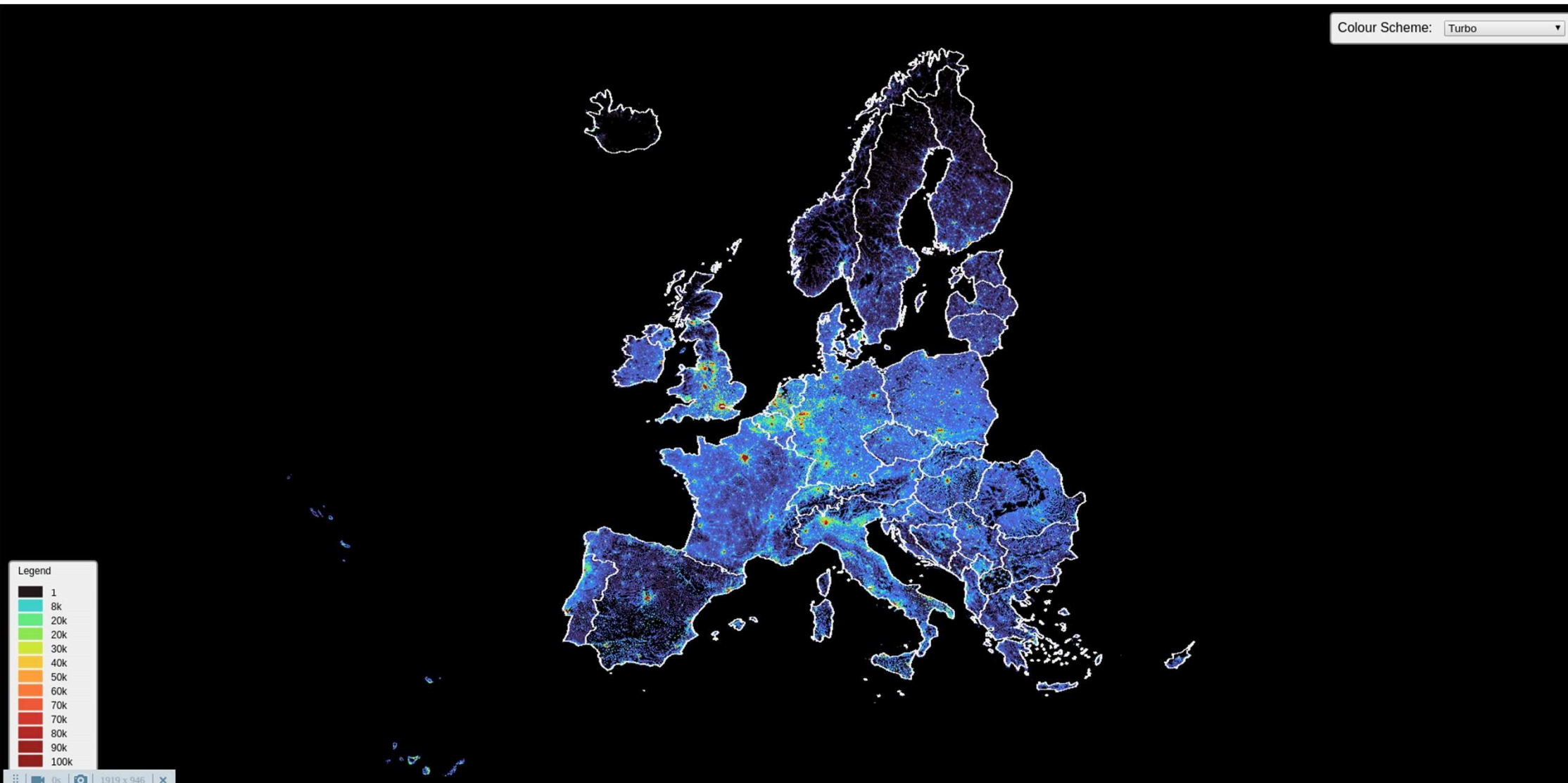
# Javascript libraries: Eurostat-map.js



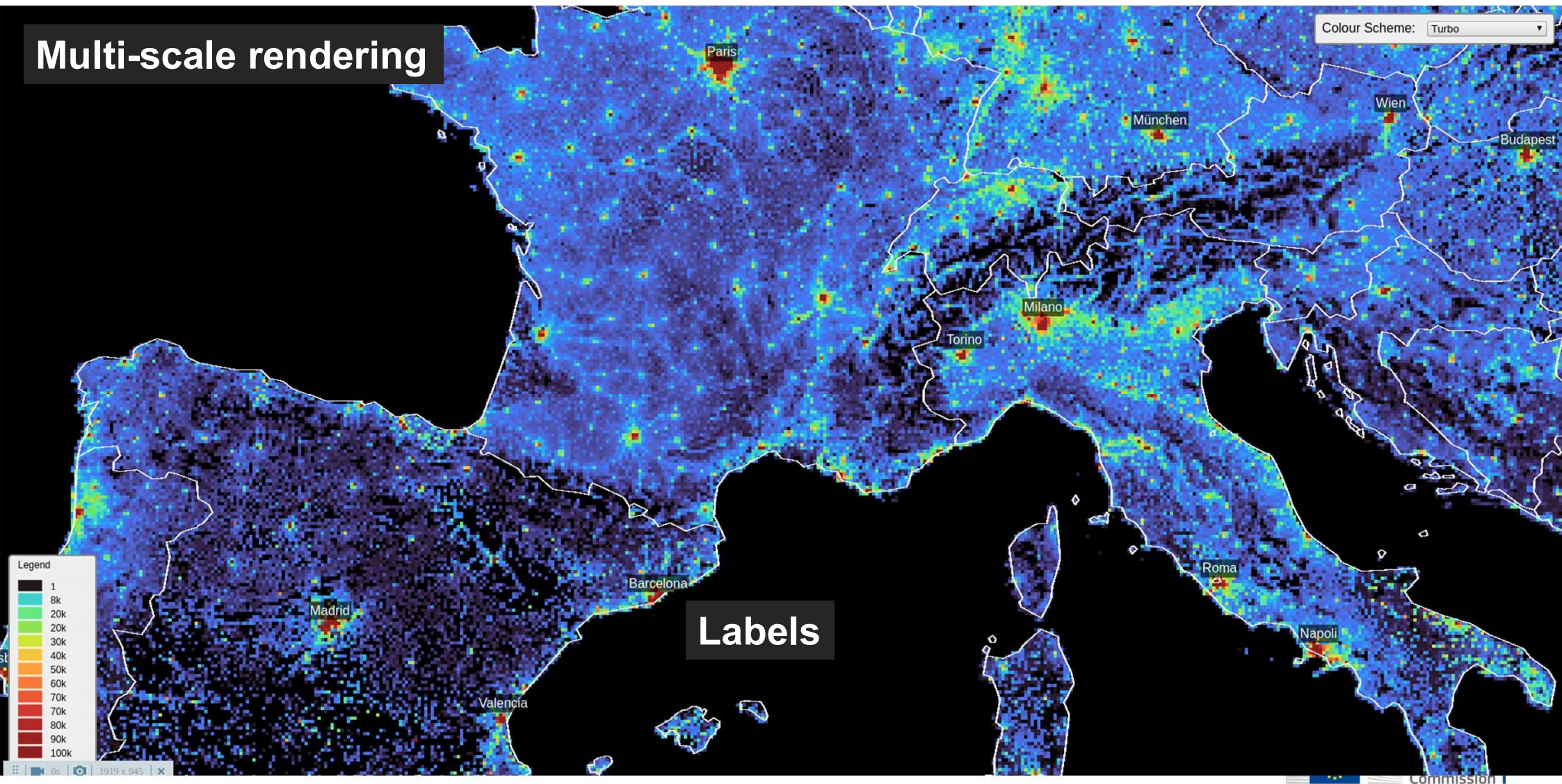
Demo on: <https://observablehq.com/@joewdavies/eurostat-map-js>



# Grid visualisation; multi-scale



# Multi-scale rendering





Multi-scale rendering

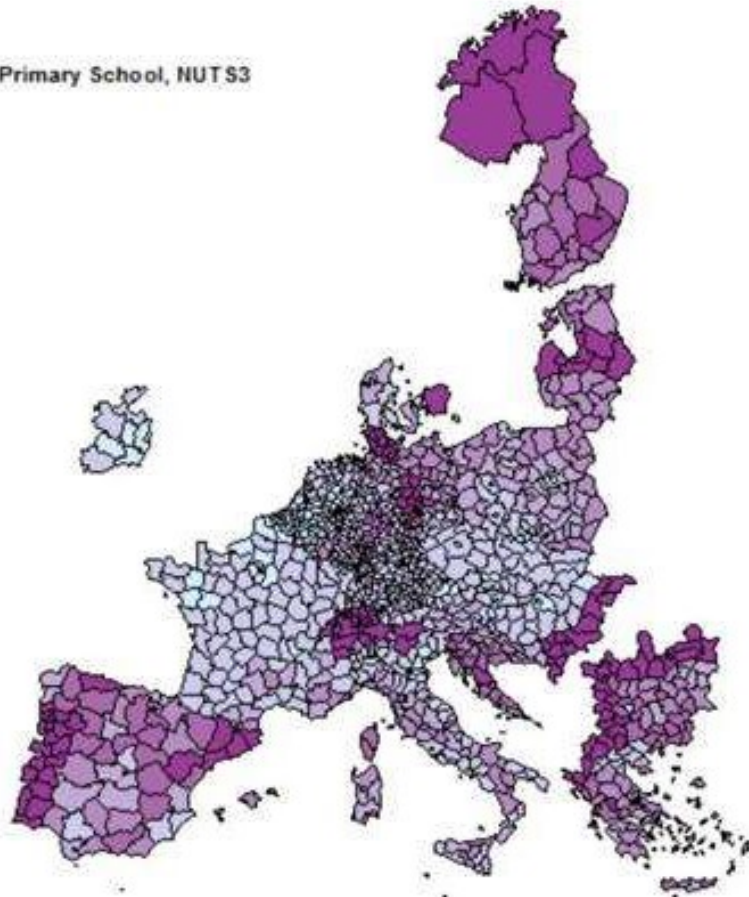
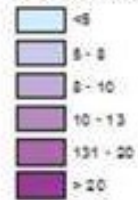
Colour Scheme: Turbo

value: 21654  
x: 4124  
y: 2366

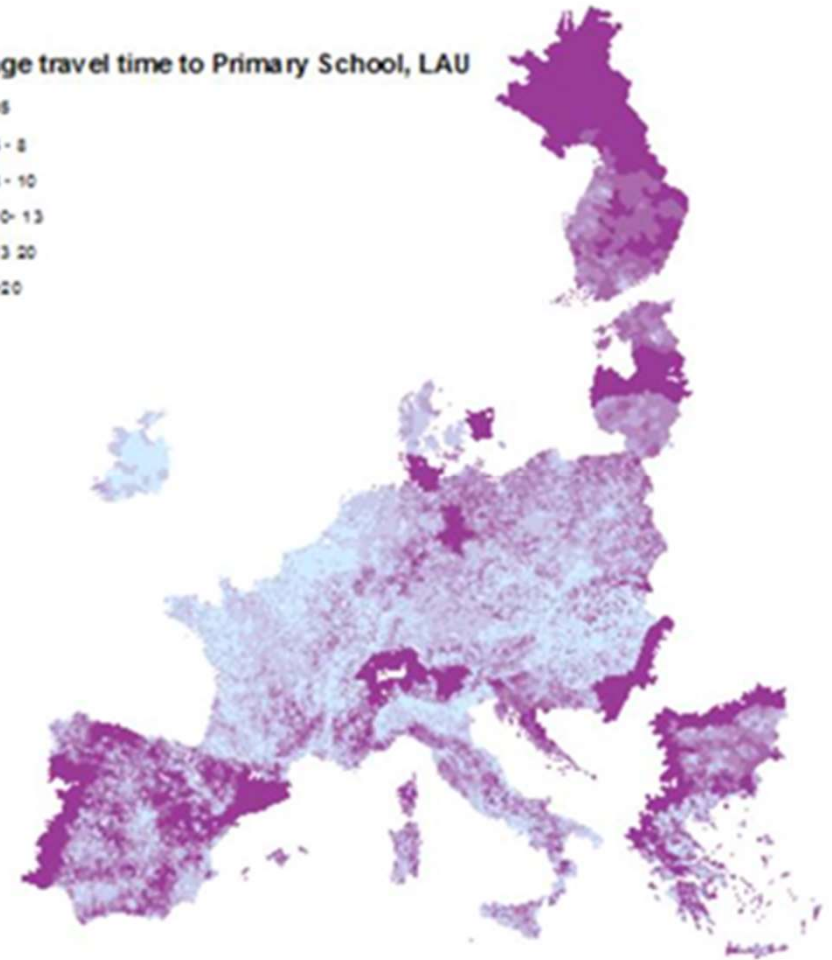
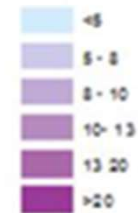
Interactive value selection

# Spatial analysis, geo-statistical datasets at different territorial levels

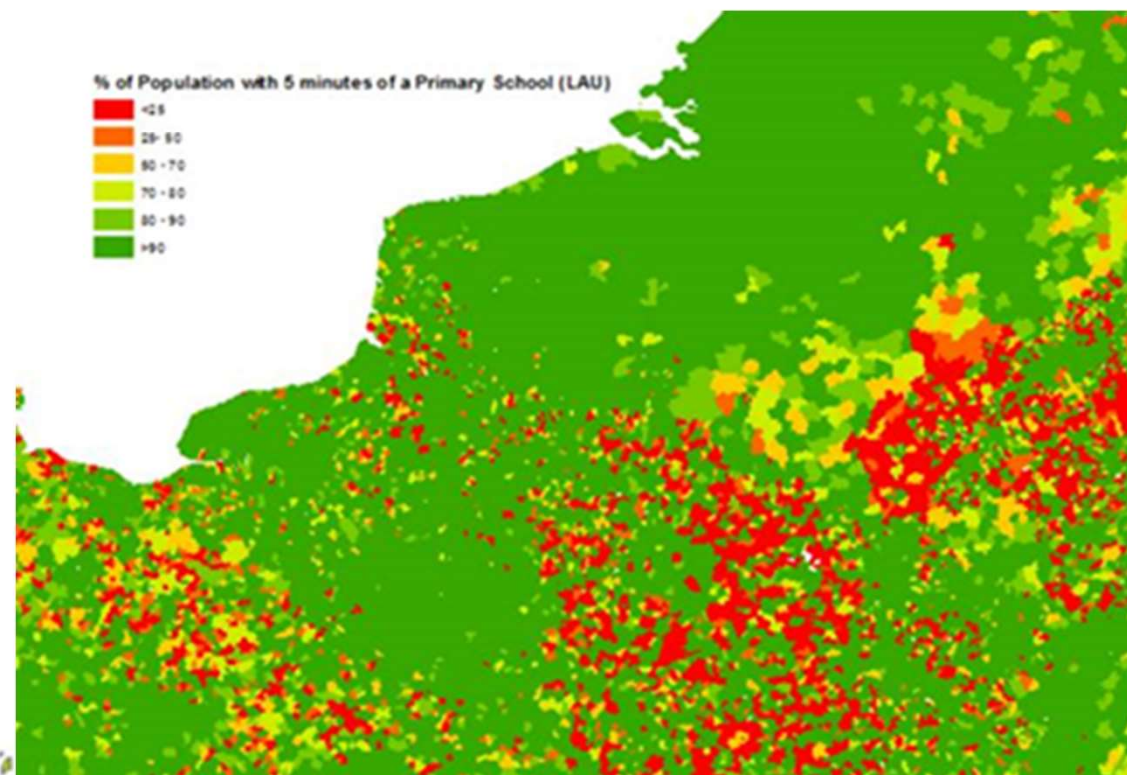
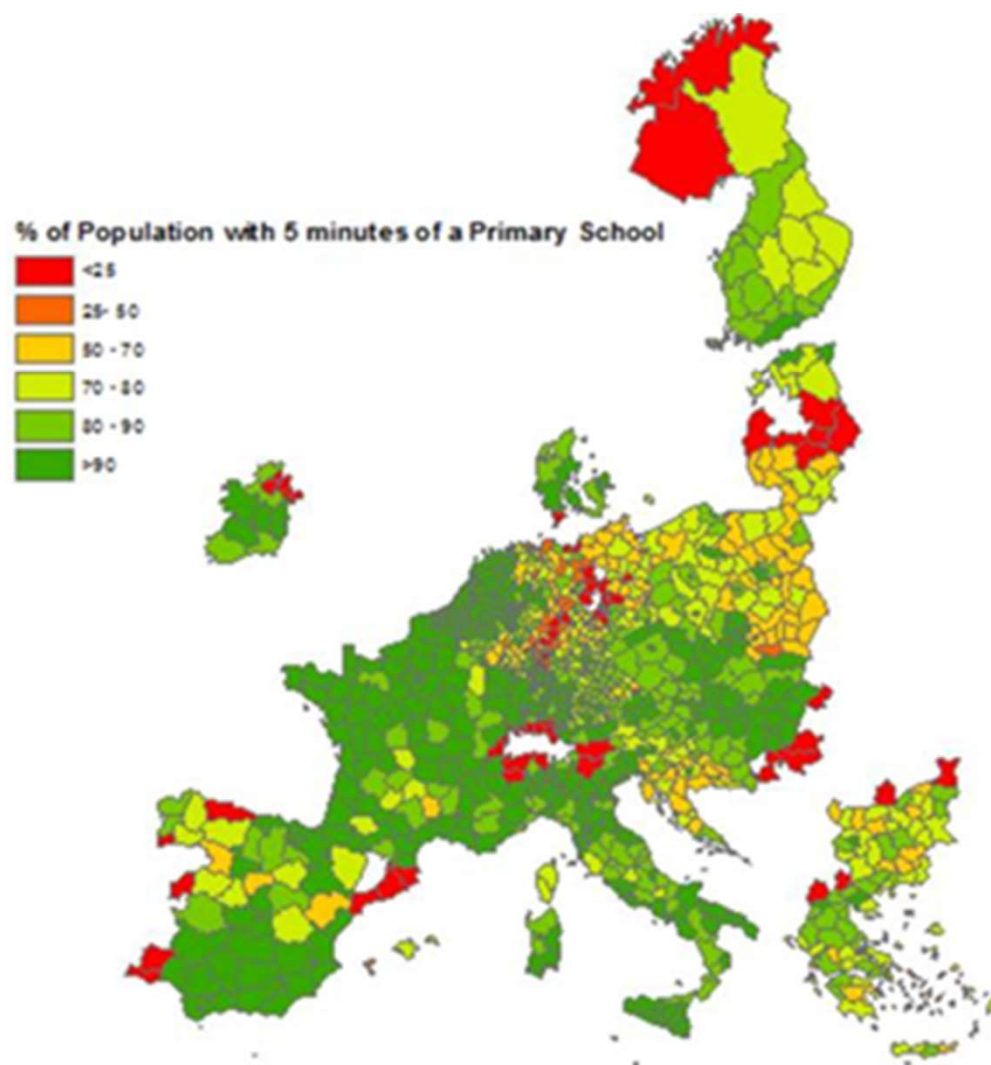
Average travel time to Primary School, NUTS3



Average travel time to Primary School, LAU

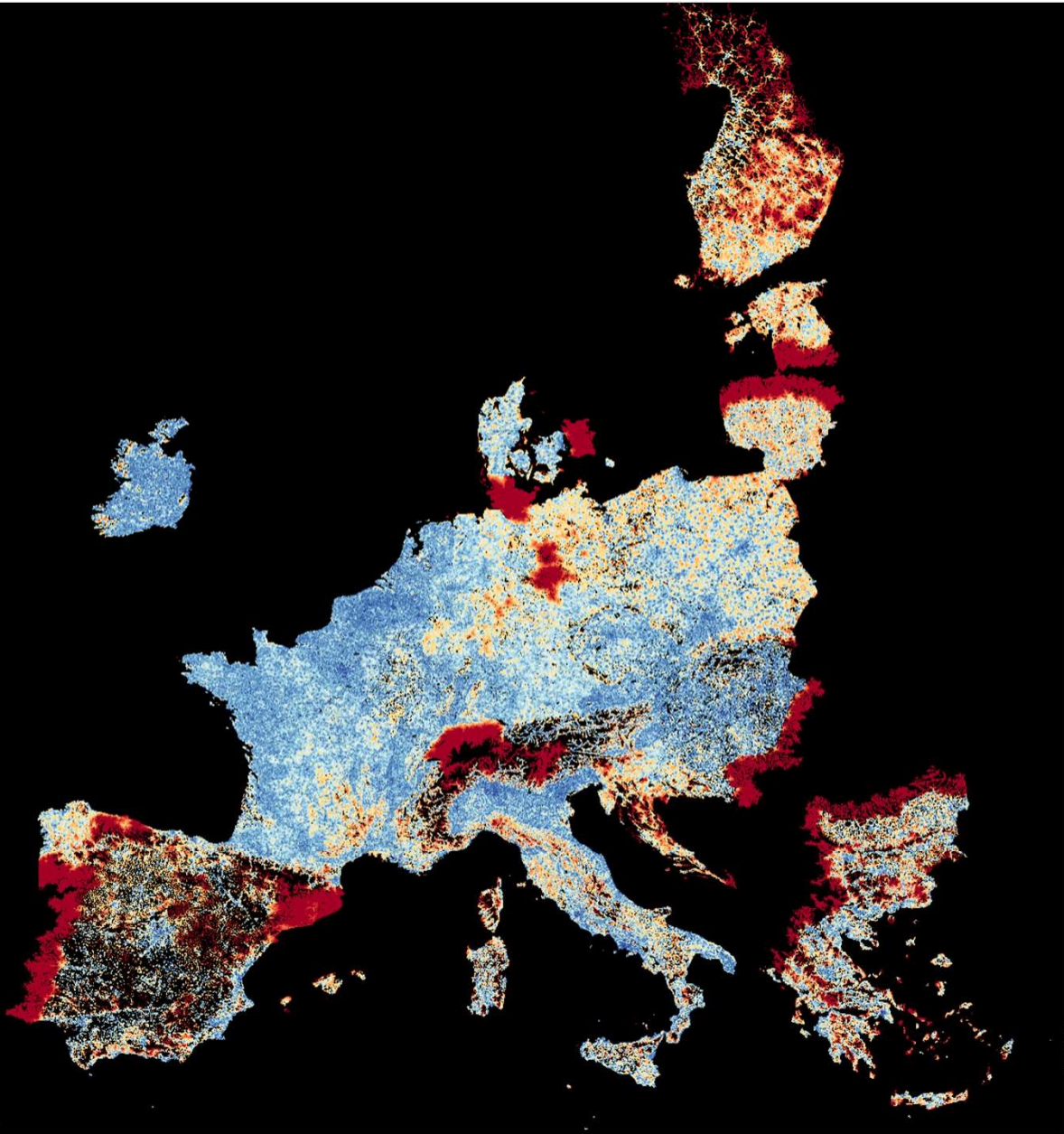
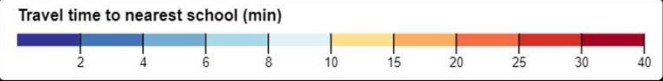




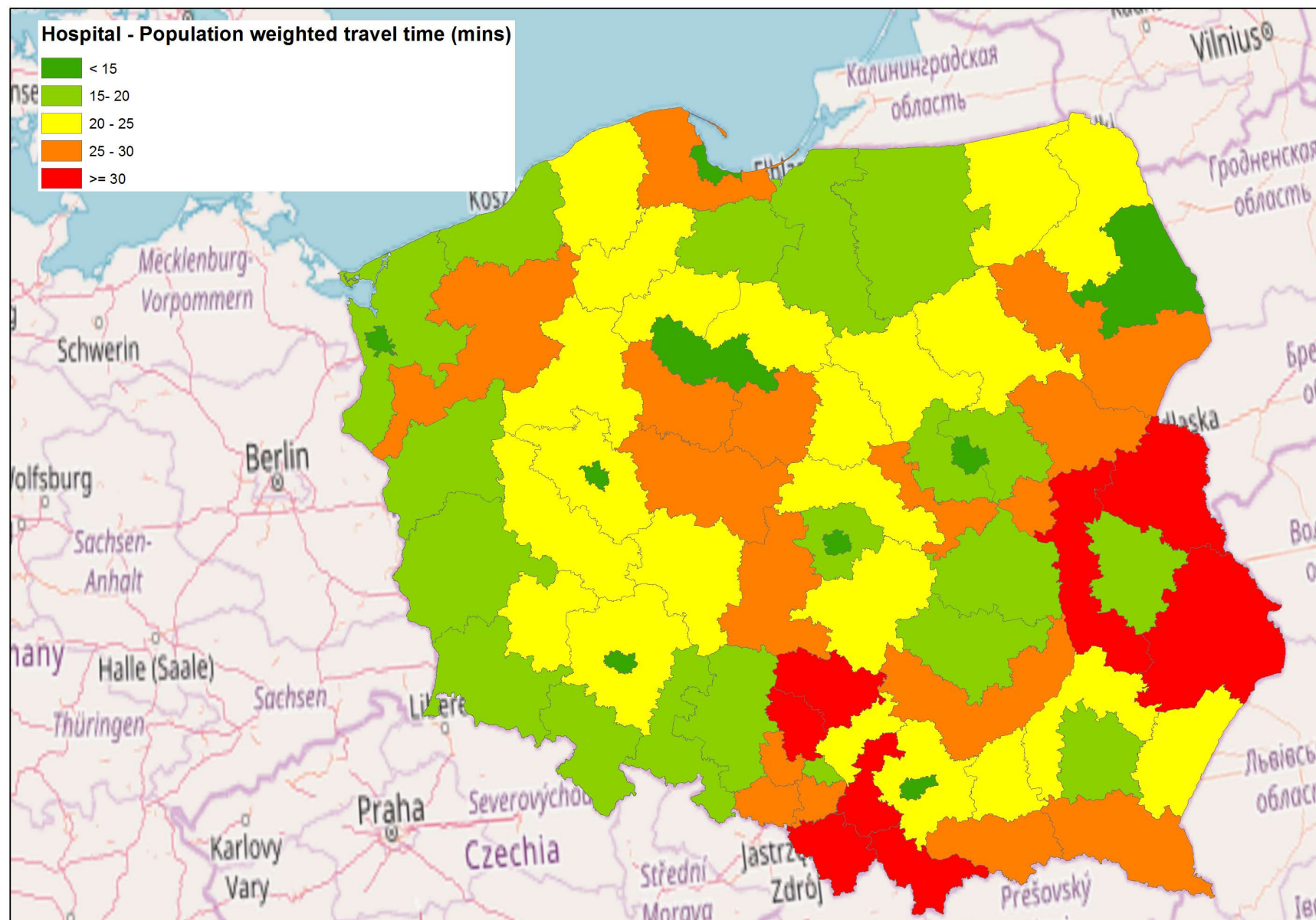


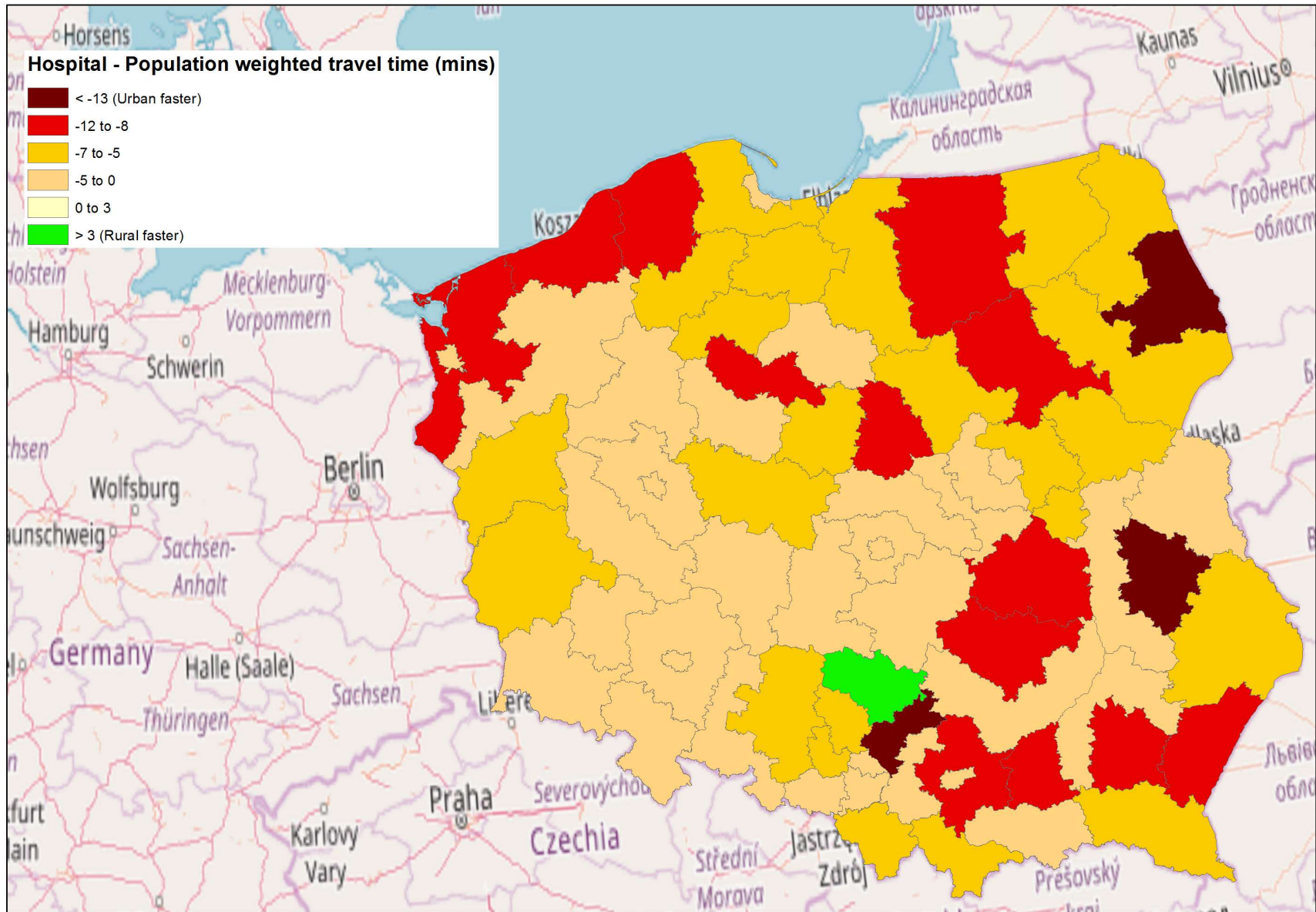
Primary schools accessibility

Number of cells: 1 687 933











Healthcare accessibility

Number of cells: 1 920 277

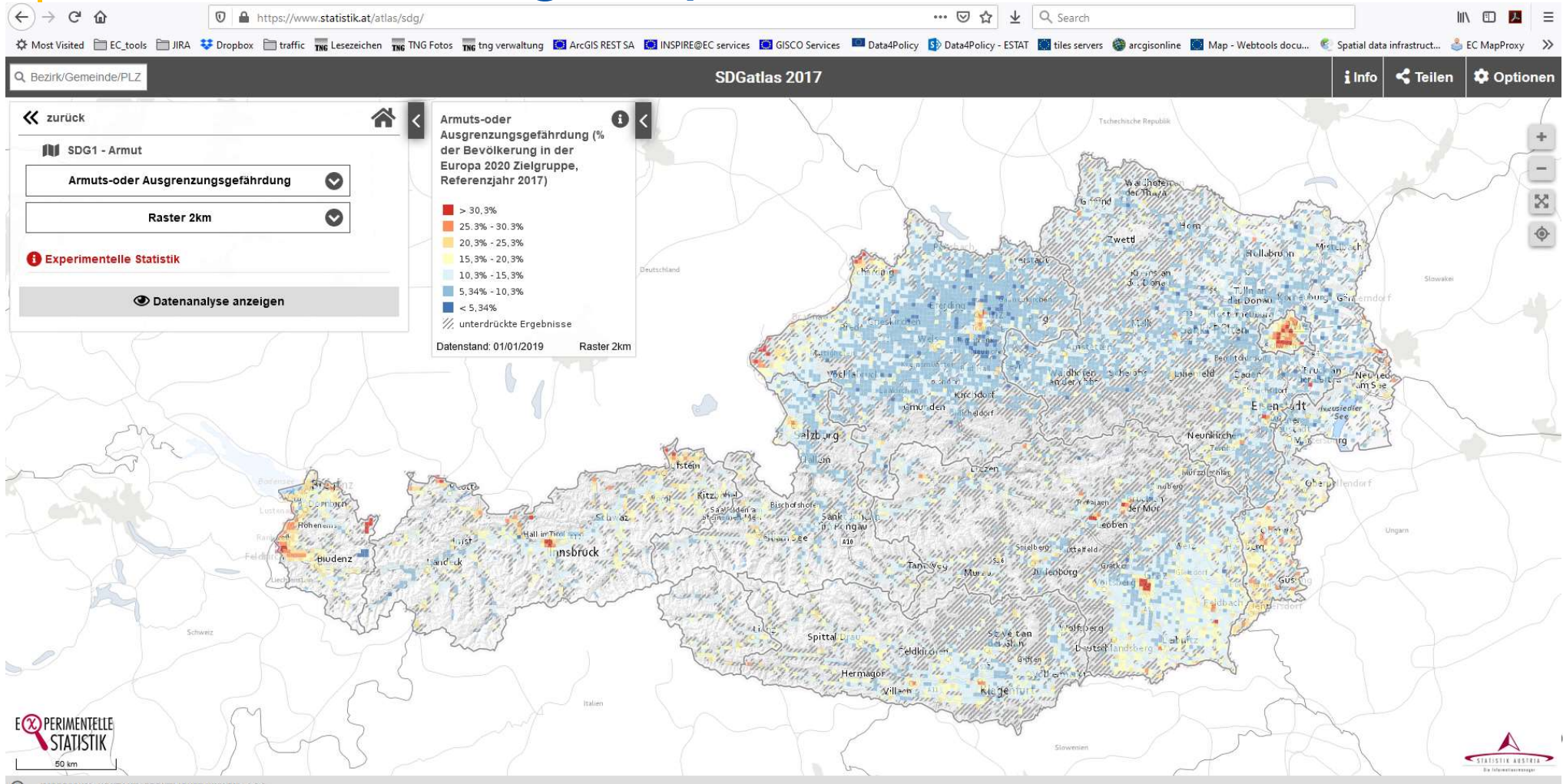
Travel time to nearest school (min)



# Coordination commission-wide GI activities, support use

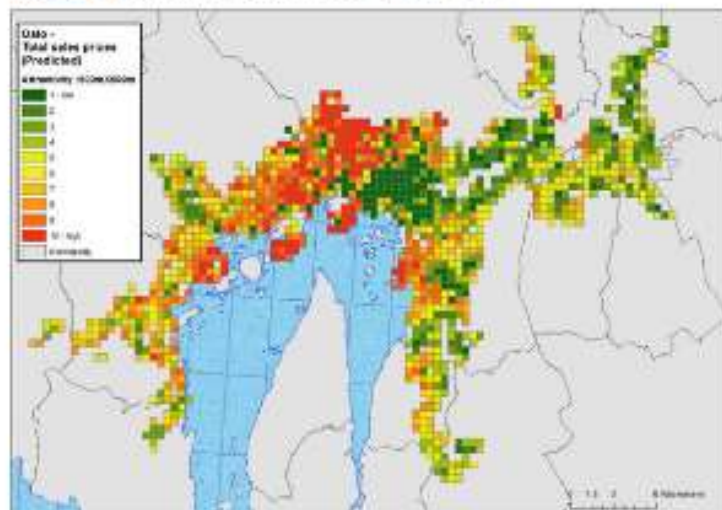
- COGI / GUTC
- Framework Contract on GI experts
- Participation in numerous expert groups, interservice groups, knowledge centres etc.

# Support activities on the integration of statistical and geospatial information

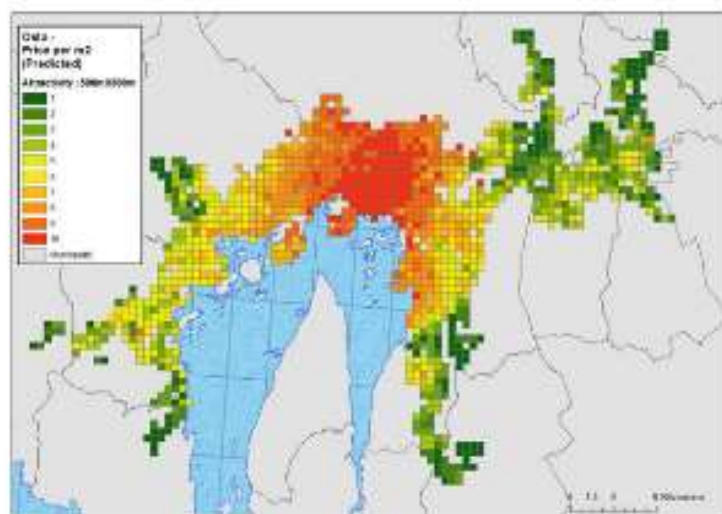




**Figure 2:** Production of attractive urban areas

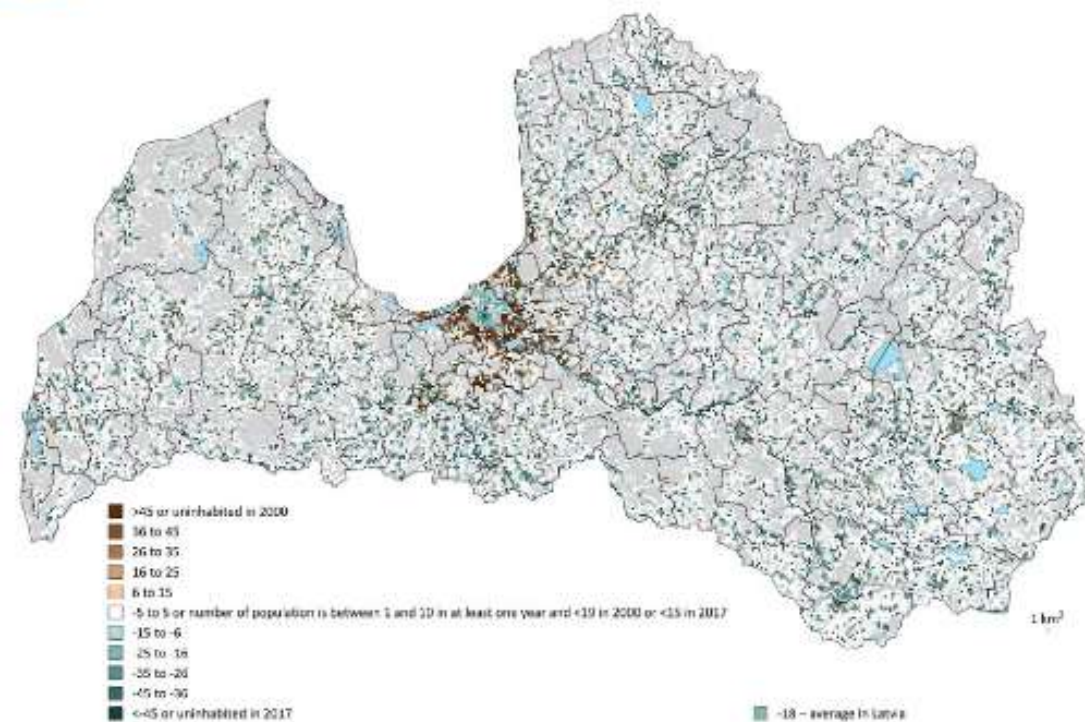


Predicted  
Total sales price  
Attractivity index 1-10



Predicted  
Price per m2  
Attractivity index 1-10

**Figure 1:** Change in usually resident population, 2000-2017





## International cooperation

**UNECE**

**EFGS**

**UN-  
GGIM**

**Geostat**

**Others**

# Thank you!!

## estat-gisco@ec.europa.eu



© European Union 2020

Unless otherwise noted the reuse of this presentation is authorised under the [CC BY 4.0](https://creativecommons.org/licenses/by/4.0/) license. For any use or reproduction of elements that are not owned by the EU, permission may need to be sought directly from the respective right holders.

Slide xx: [element concerned](#), source: [e.g. Fotolia.com](#); Slide xx: [element concerned](#), source: [e.g. iStock.com](#)

