

Using official data in response to the COVID-19 crisis

- Case study from Ireland

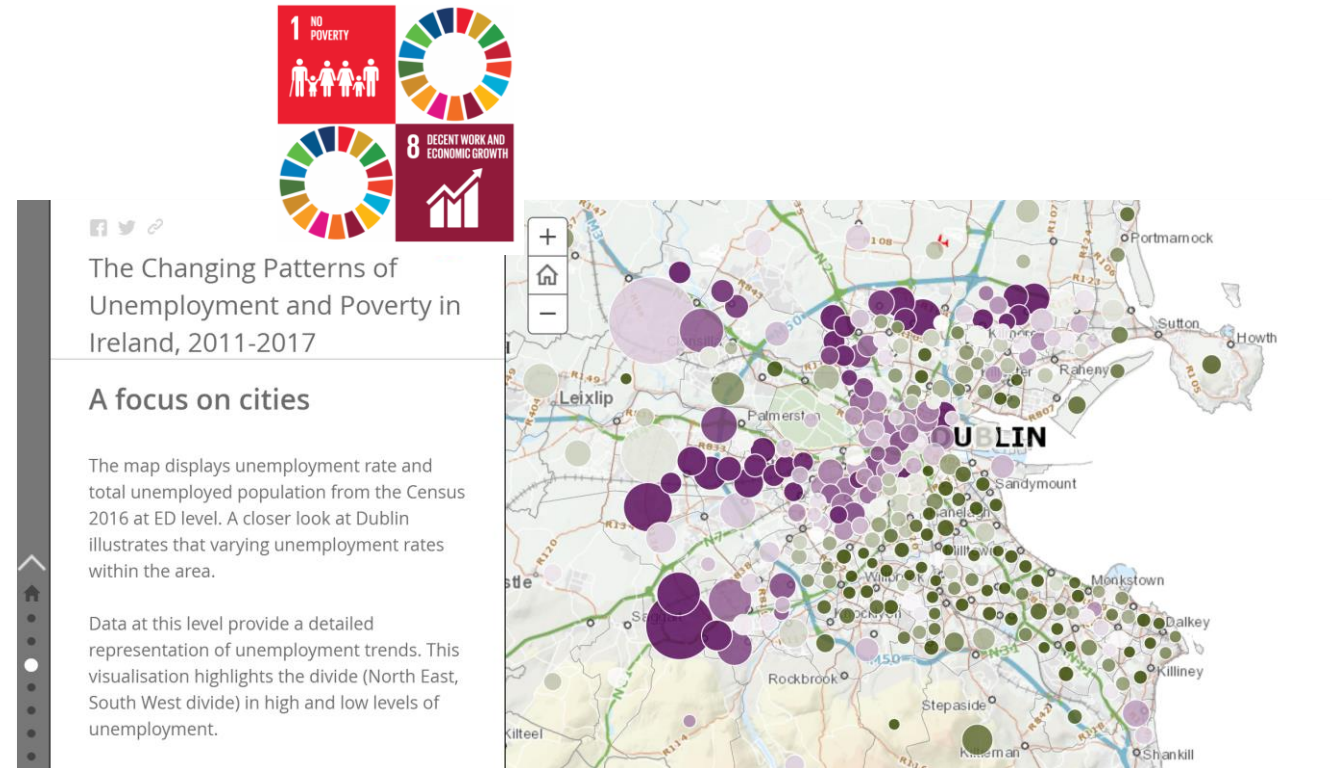
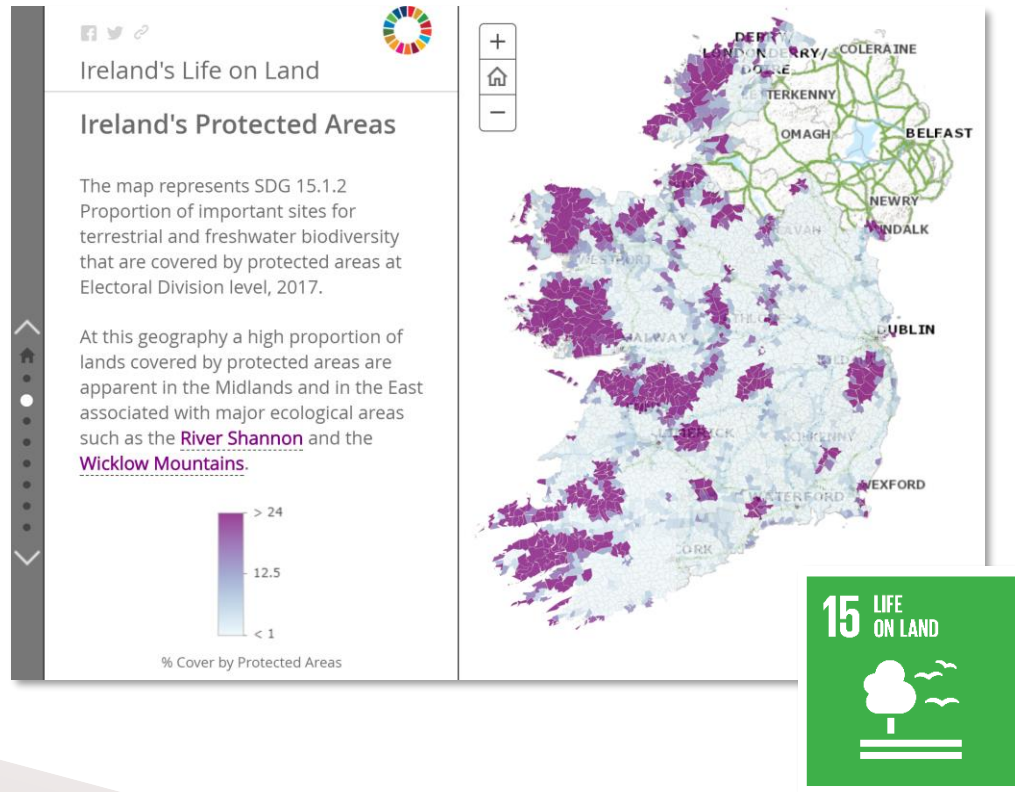
Colin Bray, CEO & Chief Survey Officer

UN-GGIM: Europe 7th Plenary, 22nd June 2020

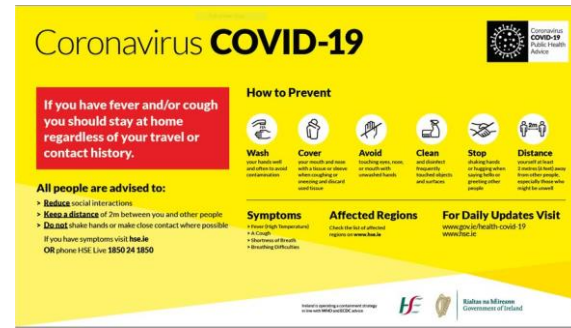


Rialtas na hÉireann
Government of Ireland

Ireland's UN SDG Reporting Hub



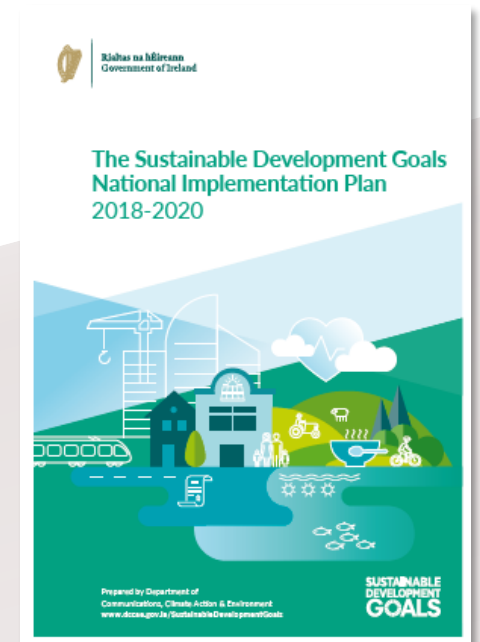
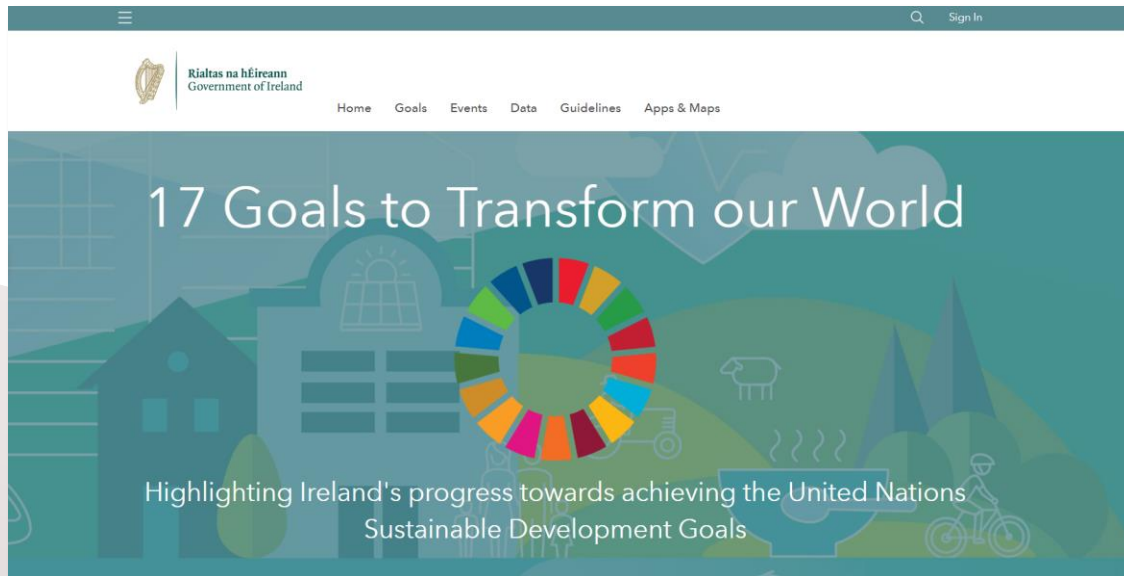
Refocusing Ireland SDG team on COVID-19



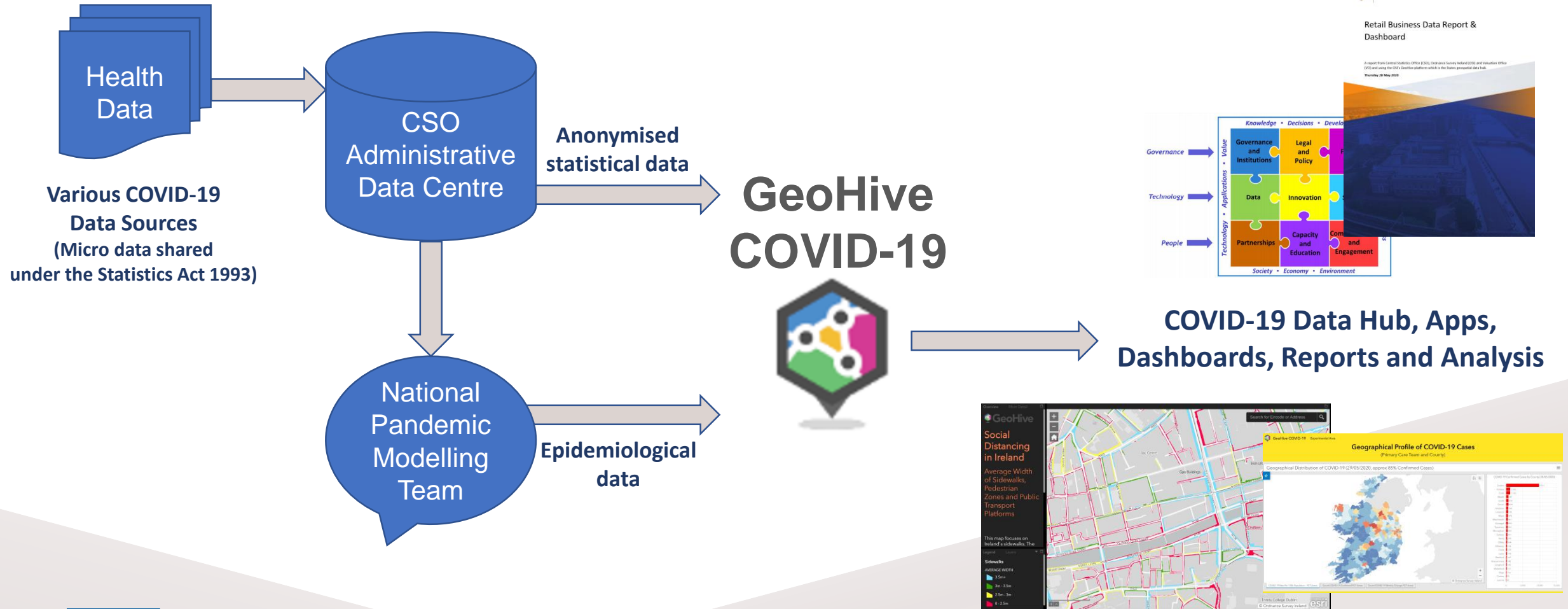
Geospatial Data and GeoHive Platform



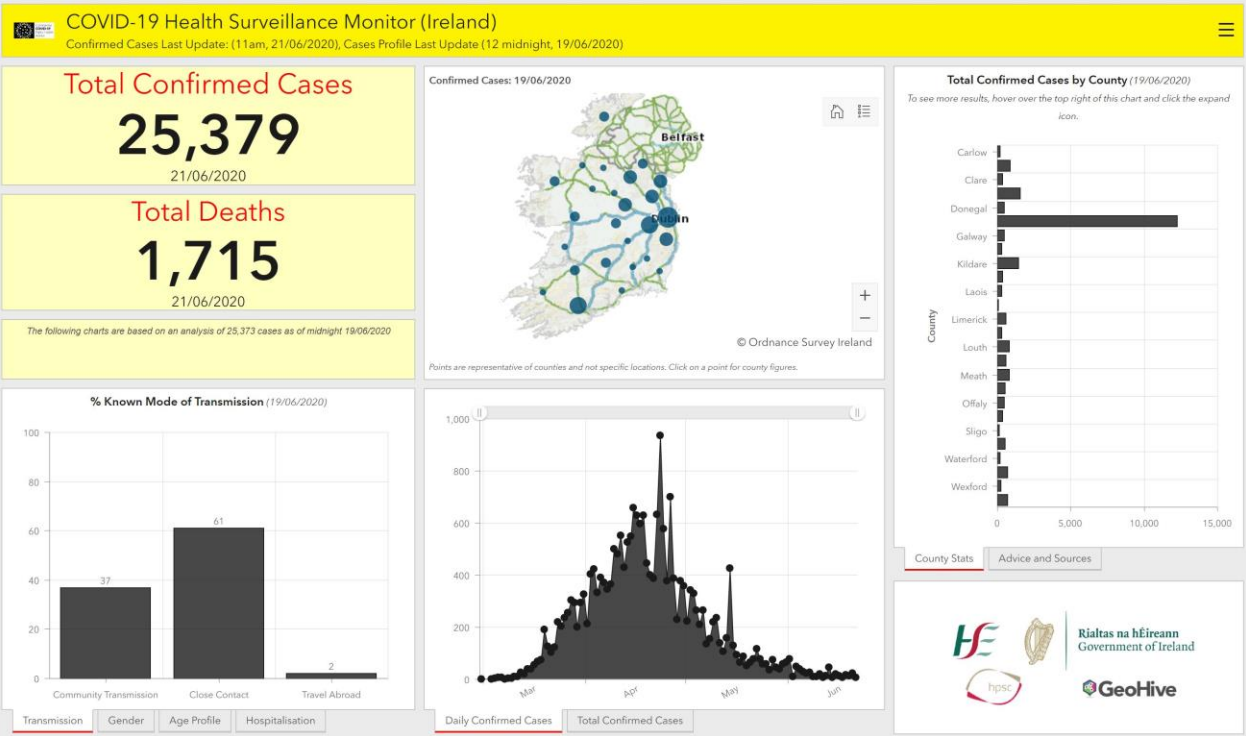
Statistics and Data Governance



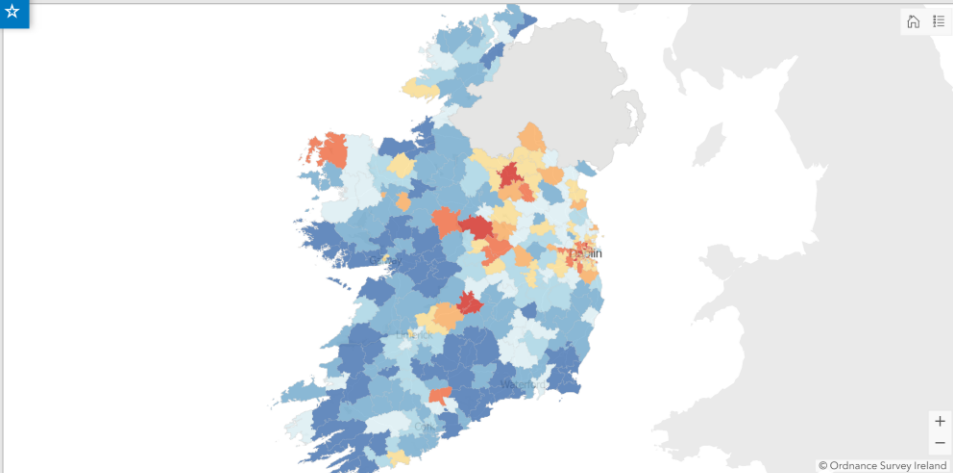
COVID-19 Data Ecosystem



Public COVID-19 Dashboard

GeoHive service	Apps	Usage
<p>Publically available Health Surveillance Monitor Dashboard for the Department of Health.</p> <p>https://geohive.maps.arcgis.com/apps/opsdashboard/index.html#/29dc1fec79164c179d18d8e53df82e96</p>		<p>Updated daily.</p> <p>Over 750,000 hits since 18 March on desktop; 650,000 on mobile devices.</p>

NPHET / DOH secure data hub

GeoHive service	Apps	Usage																																																				
<p>Secure data hub to provide geo-statistical visualisation for the National Public Health Emergency Team (NPHET) and the Department of Health (DOH).</p> <p>Restricted access for nominated NPHET and DOH personnel.</p>	<div><div>GeoHive COVID-19 Experimental Area</div><div>Geographical Profile of COVID-19 Cases (Primary Care Team and County)</div><div>Geographical Distribution of COVID-19 (29/05/2020, approx 85% Confirmed Cases)</div><div><div></div><div><div>COVID-19 Confirmed Cases by County (30/05/2020)</div><table><tr><td>Dublin</td><td>2,751</td></tr><tr><td>Kildare</td><td>1,142</td></tr><tr><td>Cork</td><td>1,136</td></tr><tr><td>Meath</td><td>461</td></tr><tr><td>Louth</td><td>452</td></tr><tr><td>Cavan</td><td>434</td></tr><tr><td>Wicklow</td><td>364</td></tr><tr><td>Limerick</td><td>332</td></tr><tr><td>Mayo</td><td>478</td></tr><tr><td>Westmeath</td><td>461</td></tr><tr><td>Donegal</td><td>454</td></tr><tr><td>Tipperary</td><td>389</td></tr><tr><td>Monaghan</td><td>388</td></tr><tr><td>Galway</td><td>351</td></tr><tr><td>Kerry</td><td>292</td></tr><tr><td>Offaly</td><td>264</td></tr><tr><td>Kilkenny</td><td>236</td></tr><tr><td>Clare</td><td>232</td></tr><tr><td>Laois</td><td>216</td></tr><tr><td>Wexford</td><td>162</td></tr><tr><td>Roscommon</td><td>148</td></tr><tr><td>Longford</td><td>145</td></tr><tr><td>Waterford</td><td>137</td></tr><tr><td>Sligo</td><td>116</td></tr><tr><td>Carlow</td><td>95</td></tr><tr><td>Leitrim</td><td>67</td></tr></table></div></div><div><div>COVID-19 Rate Per 100k Population - PCT Areas</div><div>Count COVID-19 Confirmed PCT Areas</div><div>Count COVID-19 Weekly Change PCT Areas</div></div></div>	Dublin	2,751	Kildare	1,142	Cork	1,136	Meath	461	Louth	452	Cavan	434	Wicklow	364	Limerick	332	Mayo	478	Westmeath	461	Donegal	454	Tipperary	389	Monaghan	388	Galway	351	Kerry	292	Offaly	264	Kilkenny	236	Clare	232	Laois	216	Wexford	162	Roscommon	148	Longford	145	Waterford	137	Sligo	116	Carlow	95	Leitrim	67	<p>Updated daily.</p> <p>Over 80 National Public Health Emergency Team key personnel actively using the service.</p>
Dublin	2,751																																																					
Kildare	1,142																																																					
Cork	1,136																																																					
Meath	461																																																					
Louth	452																																																					
Cavan	434																																																					
Wicklow	364																																																					
Limerick	332																																																					
Mayo	478																																																					
Westmeath	461																																																					
Donegal	454																																																					
Tipperary	389																																																					
Monaghan	388																																																					
Galway	351																																																					
Kerry	292																																																					
Offaly	264																																																					
Kilkenny	236																																																					
Clare	232																																																					
Laois	216																																																					
Wexford	162																																																					
Roscommon	148																																																					
Longford	145																																																					
Waterford	137																																																					
Sligo	116																																																					
Carlow	95																																																					
Leitrim	67																																																					

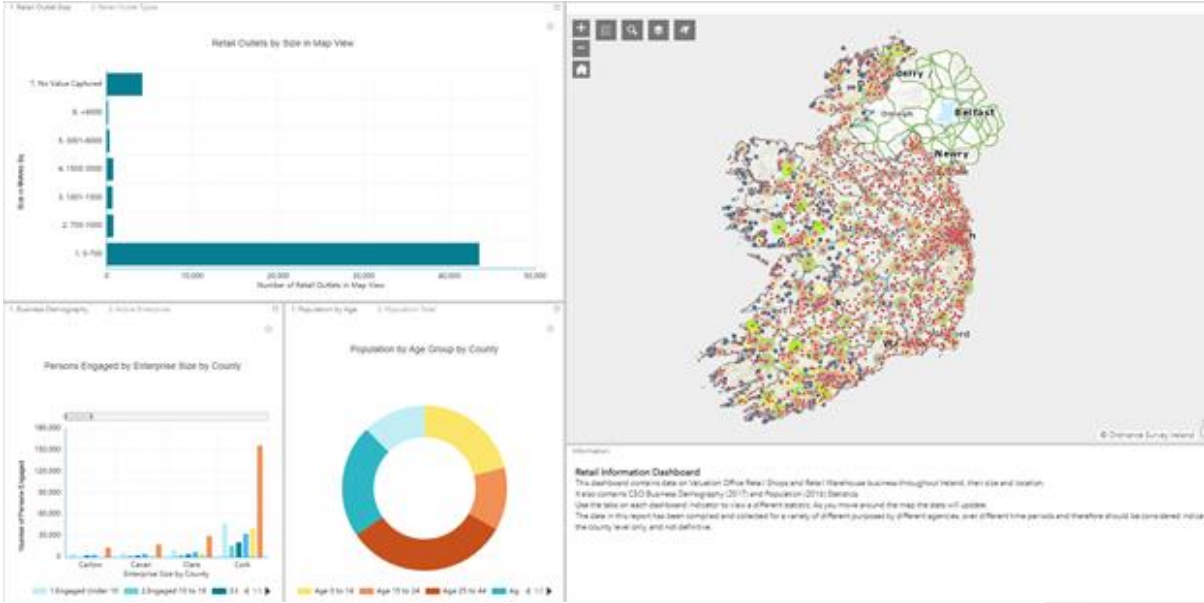
5* Linked Open COVID-19 data

GeoHive service	Apps	Usage
<p>Daily Open Data update to data.gov.ie as 3-star and 5-star linked open data.</p> <p>https://data.gov.ie/dataset?q=covid&sort=score+desc%2C+metadata_created+desc</p>	<div> <div> <div>CovidDailyStatisticsHPSCIreland</div> <div>FEATURED</div> <div> Ordinance Survey Ireland This Table contains Covid-19 Daily Statistics for Ireland as reported by the Health Surveillance Protection Centre </div> <div> HTML ESRI REST GEOJSON CSV </div> <div> ★★★★☆ 586 views </div> </div> <div> <div>Covid-19 Linked Data Frontend</div> <div>NEW FEATURED</div> <div> Ordinance Survey Ireland The COVID-19 data follows Linked Data principles and resolve to a Web page or RDF file with content negotiation. For example, the following URI for a COVID-19 statistics profile record: http://data.geohive.ie/resource/covid/statprofile/2020-03-30 will redirect to... </div> <div> TTL </div> <div> ★★★★★ 9 views </div> </div> </div>	<p>Updated daily.</p> <p>Between 3k and 13k hits per day for the 6 services.</p>

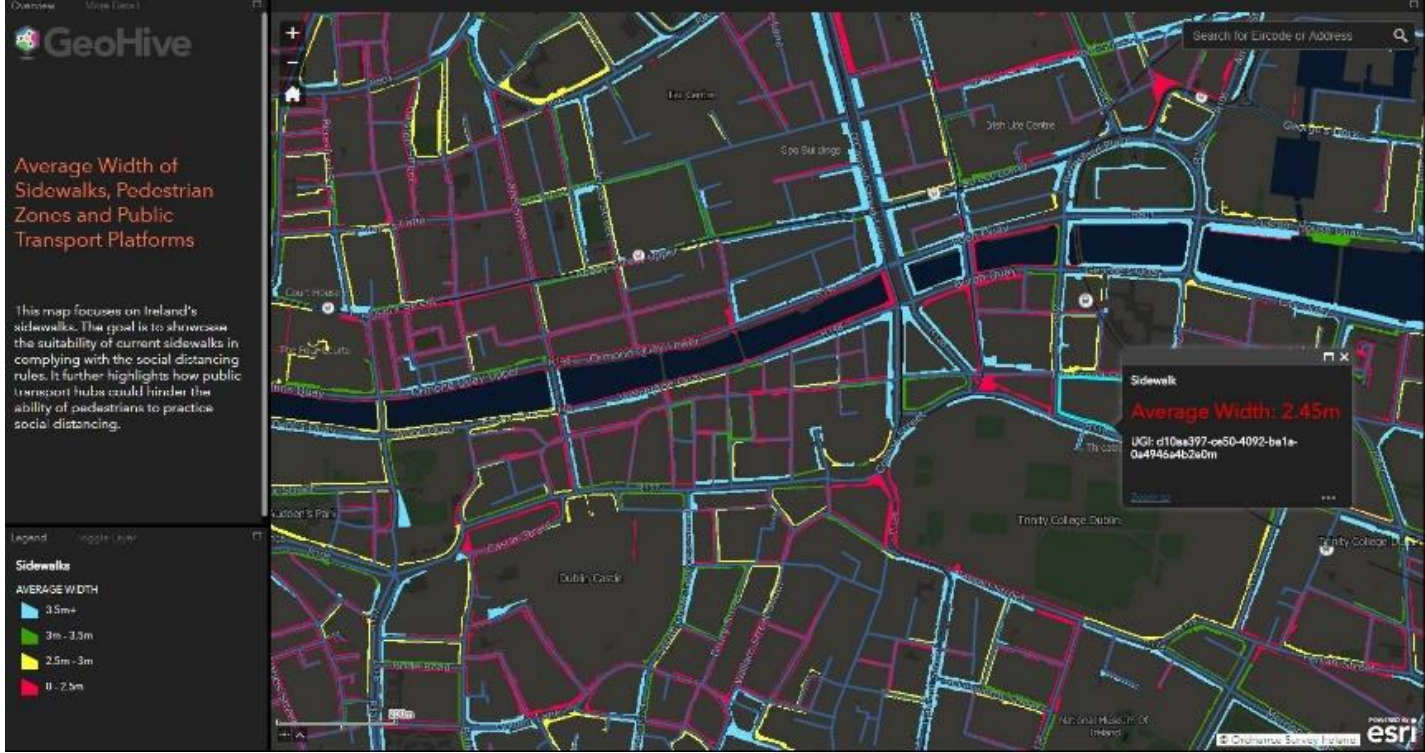
An Garda Síochana data hub

GeoHive service	Apps	Usage
<p>Geo-statistical visualisation of traffic volume data for An Garda Síochana (Irish Policing Service).</p> <p>Restricted access for nominated Garda personnel.</p>	  	<p>Secure access for all Senior Garda Personnel and Garda Control Room for traffic mobility and trend analysis.</p>

Dept. of An Taoiseach business dashboards / reports


GeoHive service	Apps	Usage
<p>Department of An Taoiseach (Ireland’s Prime Minister) for recovery phase planning.</p> <p>Map-based dashboard that displays business and retail information, showing the classification, density and size of business premises by location.</p>	 <p>The screenshot displays a 'Retail Information Dashboard' with several components: a bar chart titled 'Retail Outlets by Size in Map View' showing the distribution of outlets by size; a map of Ireland with numerous colored dots representing retail locations; a bar chart titled 'Persons Engaged by Enterprise Size by County'; and a donut chart titled 'Population by Age Group by County'. A legend at the bottom explains the color coding for enterprise size and age groups. A small text box at the bottom right provides information about the dashboard's data source and purpose.</p>	<p>Secure data hub to visualise the impact of a decision to reopen a particular part of the economy; dashboard with business location data, classified by business type.</p> <p>OSi have also provided business data reports and analysis.</p>

National Transport Authority service

GeoHive service	Apps	Usage
<p>National Transport Authority and Local Authority service for Social Distancing in Ireland which includes average width of Sidewalks, Pedestrian Zones and Public Transport Platforms.</p>	 <p>The screenshot shows the GeoHive app interface. On the left, there's a sidebar with the title 'Average Width of Sidewalks, Pedestrian Zones and Public Transport Platforms'. Below the title, it states: 'This map focuses on Ireland's sidewalks. The goal is to showcase the suitability of current sidewalks in complying with the social distancing rules. It further highlights how public transport hubs could hinder the ability of pedestrians to practice social distancing.' A legend titled 'Sidewalks' shows 'AVERAGE WIDTH' with four color-coded ranges: 3.5m+ (blue), 3m - 3.5m (green), 2.5m - 3m (yellow), and 0 - 2.5m (red). The main map area shows a street network in Dublin, with sidewalks highlighted in these colors. A search bar at the top right says 'Search for Eircode or Address'. A pop-up window for a selected sidewalk displays 'Average Width: 2.45m' and 'UGI: d10aa397-ce50-4092-ba1e-0a4945a4b2a0m'. The bottom right corner of the map has 'Ordnance Survey Ireland' and 'esri' logos.</p>	<p>Data service that focuses on Ireland's sidewalks to showcase the suitability of current sidewalks in complying with the social distancing rules.</p>

National COVID-19 data hub

<https://covid19ireland-geohive.hub.arcgis.com/>

**Riadas na hÉireann**
Government of Ireland

Ireland's COVID-19 Data Hub



Ireland's COVID-19 Data Hub

National Statistics, Information & Data

The information presented in this site is based on official figures provided by the Health Protection Surveillance Centre (HPSC) and the Health Service Executive (HSE). Datasets, charts and maps will be updated on an on-going basis and in line with newly published data. This site is built using the Geolife platform, Ireland's Geospatial Data Hub.

Confirmed Headline Figures

Figures provided by HPSC and are based on cases reported on the Computerised Infectious Disease Reporting (CIDR) database as of midnight. Data is updated on a daily basis at approximately 6pm.

Total Confirmed Cases (HPSC)		Total Deaths (HPSC)	
25,379		1,715	
Latest Daily Cases (HPSC)		Latest Daily Deaths (HPSC)	
6		0	
		Median Age Cases (HPSC)	
		48	

ICU and Acute Hospital COVID-19 Statistics

Data has been provided by the National Office of Clinical Audit (NOCA) ICU Bed Information System (ICU-BIS) and Performance Management Improvement Unit (PMIU) COVID databases from the HSE.

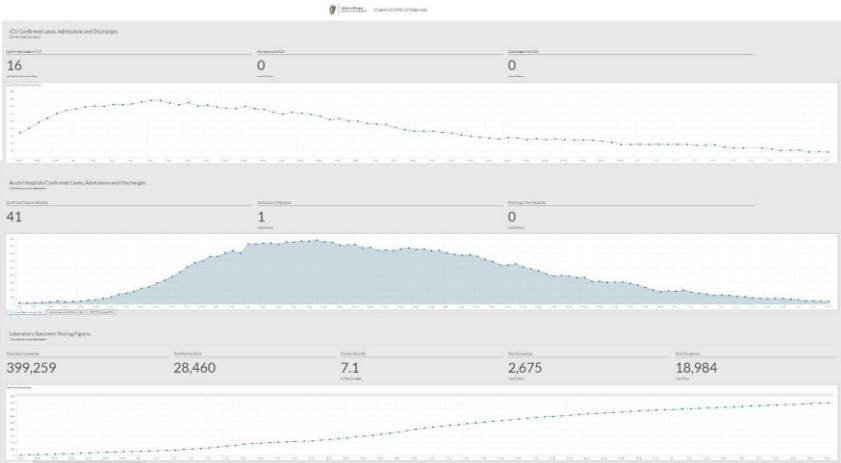
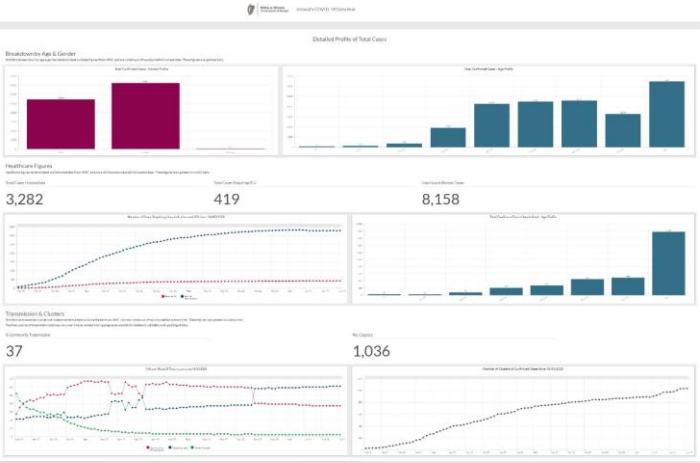
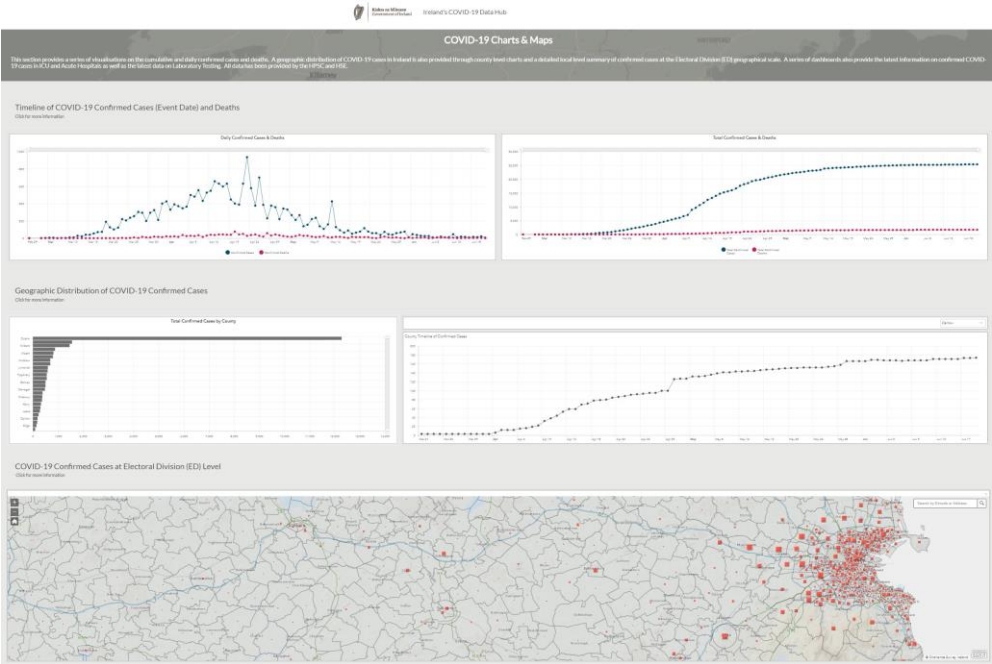
Confirmed Cases in ICU		Confirmed Cases in Hospital	
16		41	
recorded at 11am and 7:30pm		recorded at 8am	
Admissions to ICU	Discharges from ICU	Admissions to Hospital	Discharges from Hospital
0	0	1	0
In last 24 Hours	In last 24 Hours	In last 24 Hours	In last 24 Hours

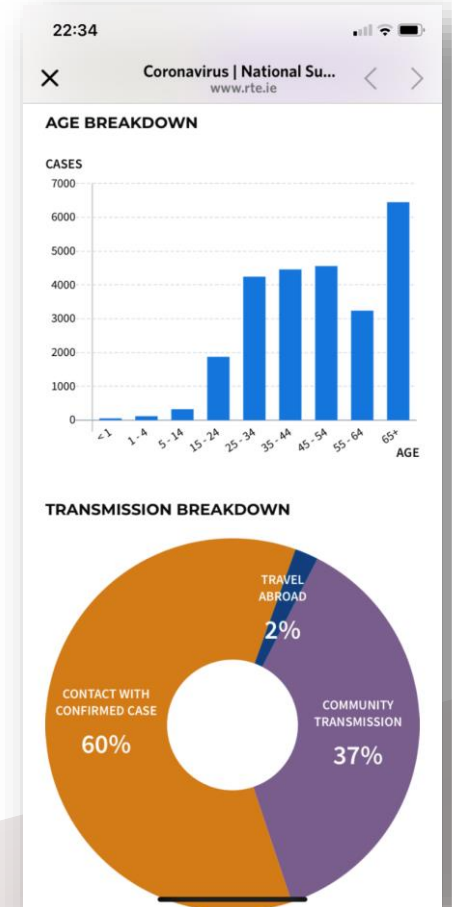
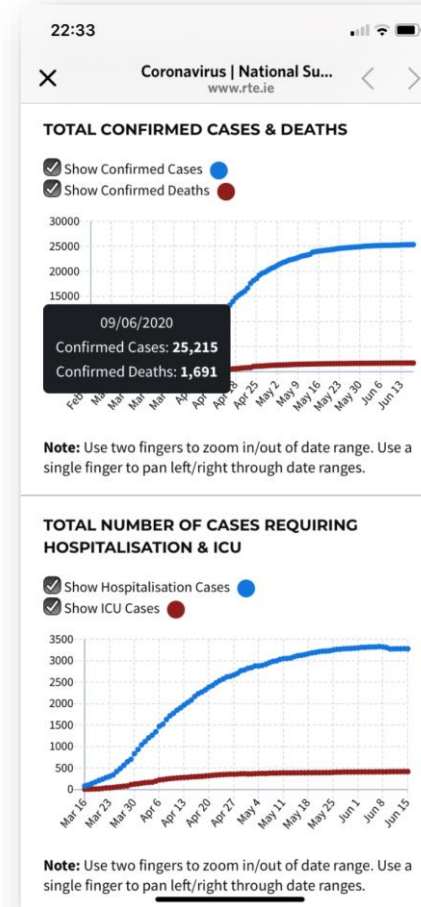
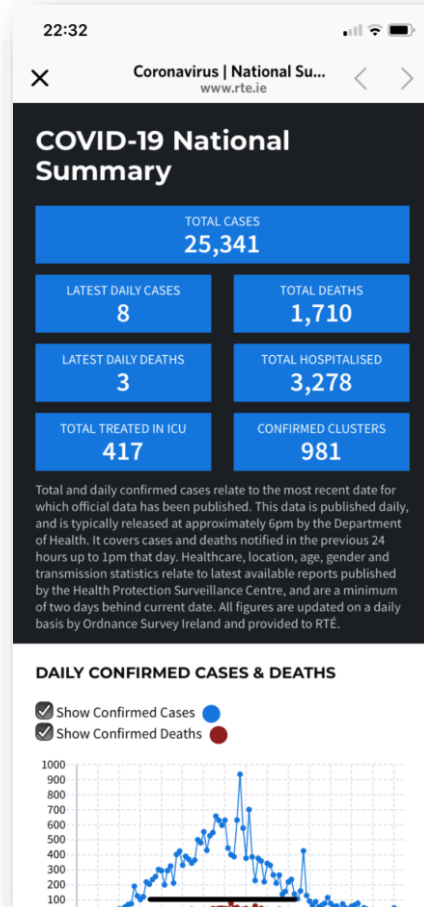
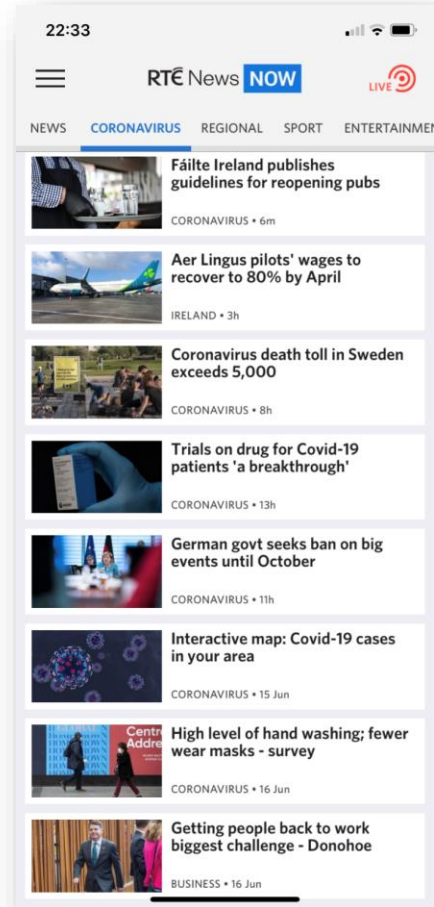
Laboratory Specimen Testing

Testing figures are provided by the HSE COVID-19 Daily lab tracker system. Data presented below are reported from this system at 3pm each day (data as of midnight previous day). This data will be updated on a daily basis from Monday to Saturday.

Note: As some cases are tested multiple times over the duration of the illness (with positive results) the total number of positive tests does not correspond to the confirmed COVID-19 cases reported by the HPSC.

Total Tests Completed		Total Positive Tests	
399,259		28,460	
Positive Rate (%)		Tests Completed	
7.1		18,984	
All Tests Completed		In last 7 Days	







COVID-19
RESPONSE

Thank you

