

# UN-GGIM: Europe Working Group on Data Integration Report: Status and Outlook



**UN-GGIM  
EUROPE**

UNITED NATIONS  
COMMITTEE OF EXPERTS ON  
GLOBAL GEOSPATIAL  
INFORMATION MANAGEMENT

Pier-Giorgio Zaccheddu, *Chair, UN-GGIM: Europe Working Group Data Integration*  
Assisted by: Francisco Vala, Cátia Nunes

UN-GGIM: Europe Plenary Meeting  
22 June 2020  
Web-Session

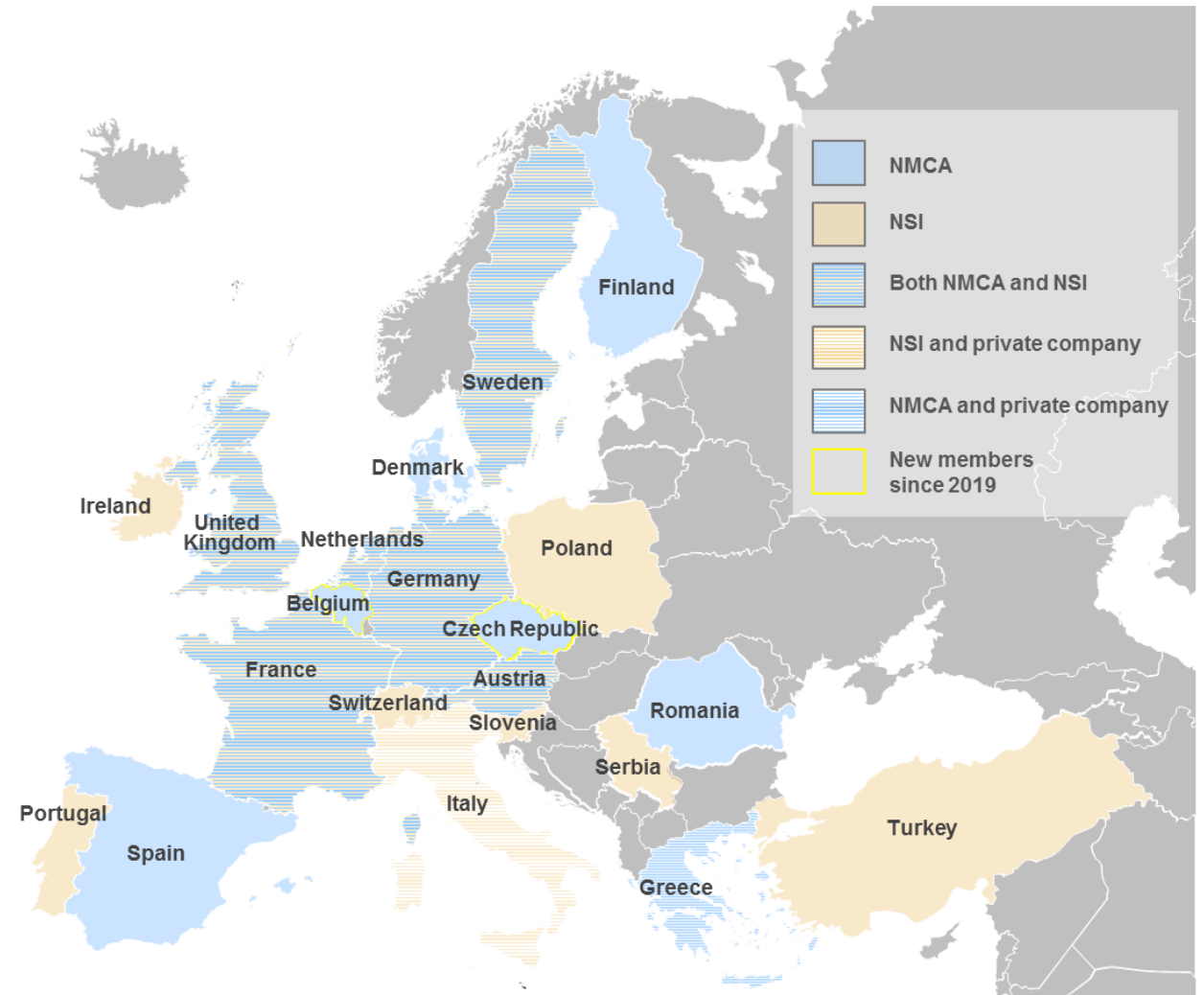


# UN-GGIM: Europe Working Group on Data Integration

The Working Group is chaired by Germany and deals with the integration of geospatial data with other information.

Currently National Mapping and Cadastral Authorities and National Statistical Institutes from about **20 European UN Member States** are members of this Working Group.

**Eurostat, the Joint Research Center and the European Environment Agency** also participate in the working group.



<https://un-ggim-europe.org/working-groups/working-group-data-integration/>



UN-GGIM: EUROPE

UNITED NATIONS COMMITTEE OF EXPERTS ON  
GLOBAL GEOSPATIAL INFORMATION MANAGEMENT



# Work Plans

1

## Work plan 2014 – 2016

- ✓ Task B1: Definition of the priority user needs for data combinations
- ✓ Task B2: Recommendations for implementing prioritized combinations of data
- ✓ Task B3: Recommendations on how to manage side-effects

2

## Work plan 2017 – 2019

- ✓ Task 1: Draft a policy outreach paper on data integration
- ✓ Task 2: Analyse four SDG indicators at a global, regional and national level

3

## Work plan 2019 - 2022

- ☐ Task 1: Analysing further SDG indicators
- ☐ Task 2: Analysing future trends in data integration
- ☐ Task 3: Advisory group for data integration issues

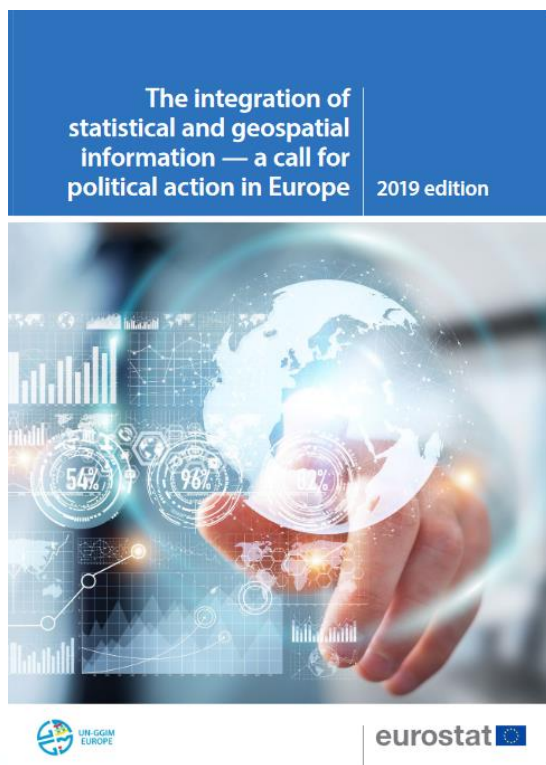


# 2

## Work Plan 2017-2019

### Task 1

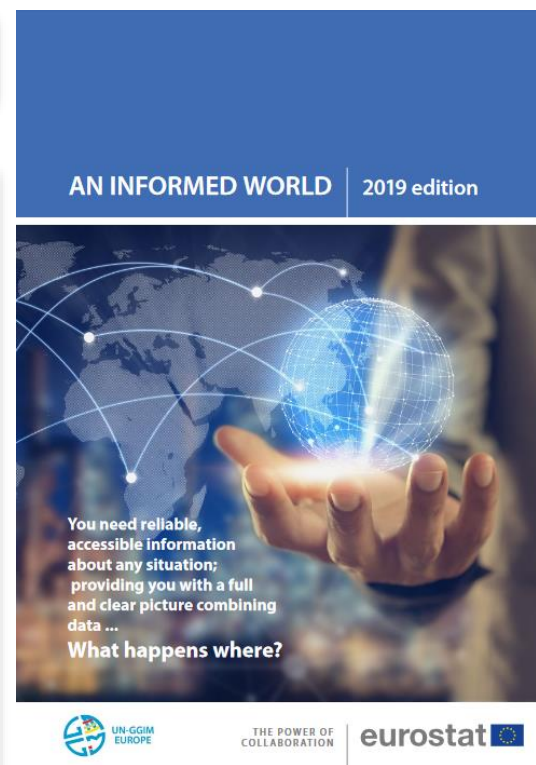
### Policy Outreach Paper & Leaflet



#### Policy Outreach Paper

- ✓ Promotes the benefits of data integration
- ✓ Recommendations on data integration

[Published](#)



#### Leaflet

- ✓ Strengthen information
- ✓ Effective examples of data integration

[Published](#)



UN-GGIM: EUROPE

UNITED NATIONS COMMITTEE OF EXPERTS ON  
GLOBAL GEOSPATIAL INFORMATION MANAGEMENT



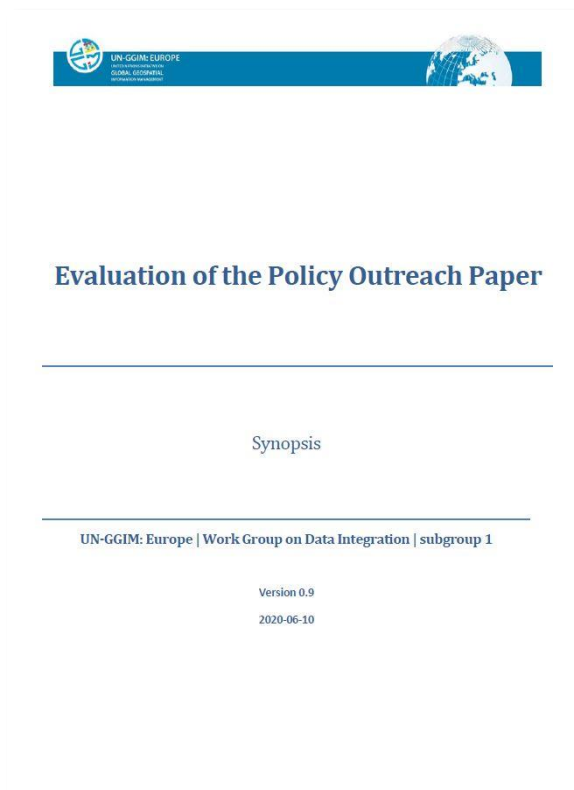
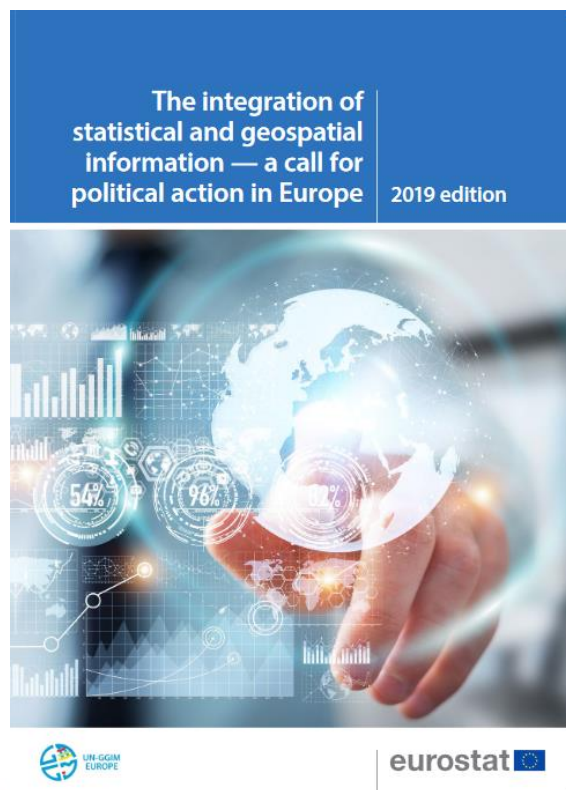


# 2

## Work Plan 2017-2019... today

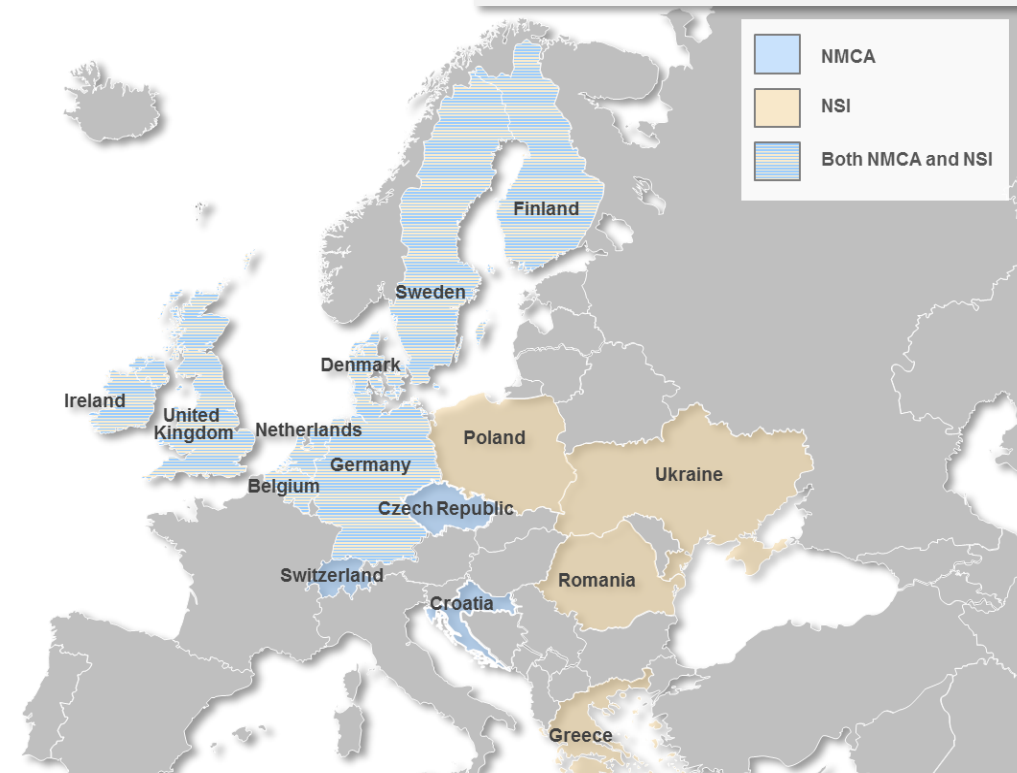
### Task 1

### Evaluation of the recommendations in the Policy Outreach Paper



Review – deadline: 30.06.2020

15 answers received in April 2020



Request was sent out in February 2020 to 63 NMCAs, 43 NSIs and 9 Observer



UN-GGIM: EUROPE

UNITED NATIONS COMMITTEE OF EXPERTS ON  
GLOBAL GEOSPATIAL INFORMATION MANAGEMENT

# 2

## Analysed SDG indicators – Final Report

### Task 2



- ✓ Focuses on the **contribution of geospatial data** and its integration with statistical data at a global, European and national perspective
- ✓ Provides **recommendations** towards a more effective geospatial data integration to address SDG indicators

[Published](#)

<p><b>11</b> SUSTAINABLE CITIES AND COMMUNITIES</p> <p><b>11.2.1</b> tier II indicator</p> <p>Proportion of population that has convenient access to public transport, by sex, age and persons with disabilities</p> <p>Indicator coordinator: Austria (NSI)</p> <p>Contributors: Austria (NSI), France (NMCA), Ireland (NSI), Sweden (NSI), Switzerland (NSI)</p>	<p><b>11</b> SUSTAINABLE CITIES AND COMMUNITIES</p> <p><b>11.3.1</b> tier II indicator</p> <p>Ratio of land consumption rate to population growth rate</p> <p>Indicator coordinator: Portugal (NSI)</p> <p>Contributors: Finland (NMCA), Ireland (NSI), Italy (e-GEOS), Portugal (NSI and NMCA)</p>
<p><b>11</b> SUSTAINABLE CITIES AND COMMUNITIES</p> <p><b>11.7.1</b> tier III indicator (currently tier II)</p> <p>Average share of the built-up area of cities that is open space for public use for all, by sex, age and persons with disabilities</p> <p>Indicator coordinator: Sweden (NSI)</p> <p>Contributors: Ireland (NSI), Sweden (NSI and NMCA), Switzerland (NSI)</p>	<p><b>15</b> LIFE ON LAND</p> <p><b>15.1.1</b> tier I indicator</p> <p>Forest area as a proportion of total land area</p> <p>Indicator coordinator: Italy (e-GEOS)</p> <p>Contributors: Austria (NMCA), Finland (NMCA), France (NMCA), Germany (NMCA), Italy (e-GEOS), Spain (NMCA)</p>



UN-GGIM: EUROPE

UNITED NATIONS COMMITTEE OF EXPERTS ON  
GLOBAL GEOSPATIAL INFORMATION MANAGEMENT



# Work Plans

1

## Work plan 2014 – 2016

- ✓ Task B1: Definition of the priority user needs for data combinations
- ✓ Task B2: Recommendations for implementing prioritized combinations of data
- ✓ Task B3: Recommendations on how to manage side-effects

2

## Work plan 2017 – 2019

- ✓ Task 1: Draft a policy outreach paper on data integration
- ✓ Task 2: Analyse four SDG indicators at a global, regional and national level

3

## Work plan 2019 - 2022

- ☐ Task 1: Analysing further SDG indicators
- ☐ Task 2: Analysing future trends in data integration
- ☐ Task 3: Advisory group for data integration issues





## What's going on – Work Plan 2019-2022

**Kick-off meeting** to define the work plan for the period 2019-2022 took place on 30-31 October 2019. The tasks were agreed by the 30 participants in attendance.

These include:

- The **analysis of further SDG indicators**, probably with focus on environmental issues
- The **collection of “Data Integration Methods”** to enhance and promote data integration in general
- The role as an **Advisory Group** to serve data integration activities and projects of the UN and the EC



UN-GGIM: EUROPE

UNITED NATIONS COMMITTEE OF EXPERTS ON  
GLOBAL GEOSPATIAL INFORMATION MANAGEMENT





# 3

## SDG indicators analysis

### Task 1

#### AIM

Provide methodological, operational and technical guidance in the use of geospatial data and statistics to compute SDG indicators, with a European and national perspective, and reflecting on solutions which may contribute to reduce statistical burden and increase the level of detail of SDG indicators

#### LINES OF WORK

- **Benchmarking pan-European data sources**  
Comparative analysis between pan-European and national methodologies, data sources and results
- **Integration of pan-European data sources with national data sources**  
Analyse the combination of pan-European with national data sources to extract new relevant information for indicators computation

#### EXPECTED OUTPUTS

- **Standard methodological/technical documents** compiling the solutions analysed and the normative methodological guidance
- **Flyers/leaflets** synthesising and illustrating the approaches analysed and the main results

## Scoping Paper describing the work planned



The integration of geospatial data and statistics to compute SDG indicators – requirements and practices:  
**Scoping Paper**

UN-GGIM: Europe | Work Group on Data Integration | subgroup I

Version 1.0  
2020-02-19



UN-GGIM: EUROPE

UNITED NATIONS COMMITTEE OF EXPERTS ON  
GLOBAL GEOSPATIAL INFORMATION MANAGEMENT

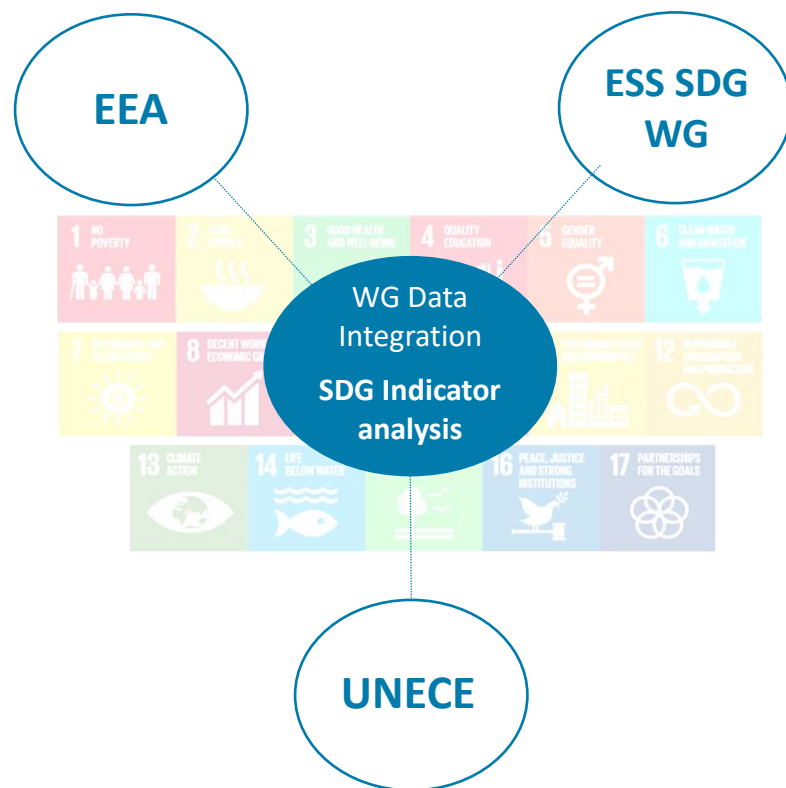


# 3

## SDG indicators analysis

### Task 1

### COOPERATION *with relevant stakeholders*



### Cooperating with the ESS SDG Working Group allows...

- ✓ To discuss our work and proposals directly with the official representatives of ESS: NSIs and Eurostat
- ✓ To coordinate and streamline recommendations with EU position
- ✓ To obtain direct feedback from NSI delegates
- ✓ To test recommendations and methodological guidance on the use of geospatial information for its practical value for countries



## Task 1

## Current list of SDG Indicators for analysis



3.6.1 | Death rate due to traffic injuries (tier I)



6.6.1 | Change in the extent of water-related ecosystems over time (tier I)



11.2.1 | Accessibility to public transports (tier II)



11.3.1 | Ratio of land consumption rate to population growth (tier II)



11.6.2 | Annual mean levels of fine particulate matter (e.g. PM2.5 and PM10) in cities (tier I)



11.7.1 | Access to public / green areas (proxy) (tier II)



14.5.1 | Coverage of protected areas in relation to marine areas (tier I)



15.1.1 | Forest area as a proportion of total land area (tier I)



15.3.1 | Proportion of land that is degraded over total land area (tier I)



15.4.1 | Coverage by protected areas of important sites for mountain biodiversity (tier I)





# 3

## Data Integration Methods

### Task 2

#### AIM

**Analysis of different data integration methods used across Europe** like “Table Joining Services” (TJS), “Linked Data” (LD) or “geocoding”. The benefits, adequacy of each method to use cases will be scanned and best practices will be identified and realistic examples of these methods shown.

**An impact assessment at economic and organization level will be investigated.**

#### LINES OF WORK

- **Evaluate former deliverables** of the WG Data Integration
- **Evaluate links to the GSGF and GSGF-Europe and connect with GEOSTAT-4**
- **Identify best practices** for data input, creation, maintenance and management
- Consider **economic, political and social level** of each method
- **Determine Pros and Cons** of each method **and recommendations**

#### EXPECTED OUTPUTS

- **Management summary (brochure)**
- Other output options to be discussed...

## Scoping Paper describing the work planned



### Data Integration Methods: Scoping Paper

UN-GGIM: Europe | Work Group on Data Integration | subgroup II

Final  
2020-06-18



UN-GGIM: EUROPE

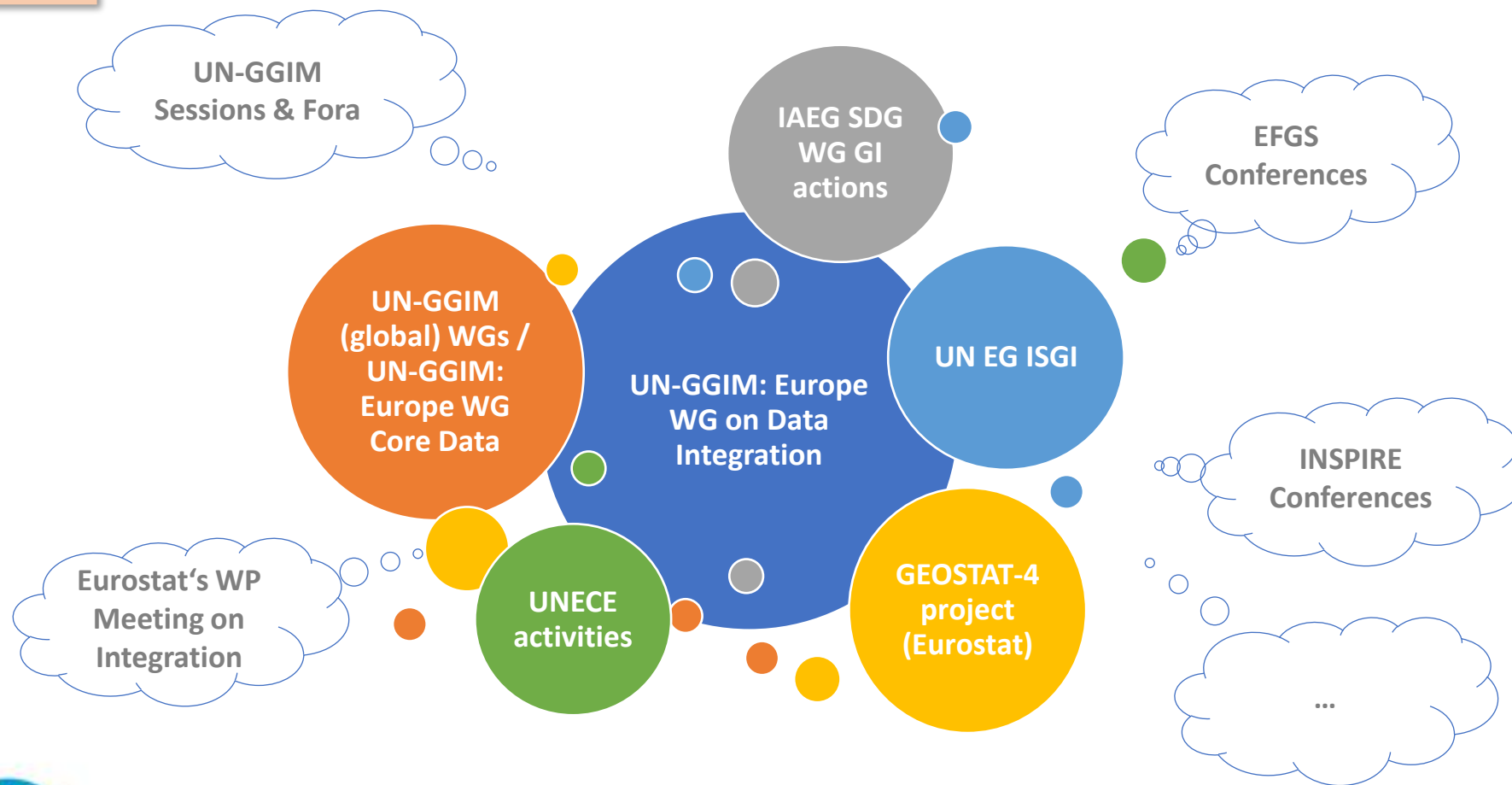
UNITED NATIONS COMMITTEE OF EXPERTS ON  
GLOBAL GEOSPATIAL INFORMATION MANAGEMENT



# 3

## Working Group as “Advisory Group”

### Task 3



#### IAEG SDG WG GI

Inter- and Agency Expert Group on SDG Indicators – Working Group on Geospatial Information

#### UNECE

UN Economic Commission for Europe

#### EFGS

European Forum for Geography and Statistics

#### GEOSTAT-Projects

Projects funded by Eurostat for merging statistics and geospatial information



UN-GGIM: EUROPE

UNITED NATIONS COMMITTEE OF EXPERTS ON  
GLOBAL GEOSPATIAL INFORMATION MANAGEMENT



## Example: Contribution to the global Inter- and Agency Expert Group on SDG Indicators – Working Group Geospatial Information (IAEG SDG WG GI)



Note on the activities of Working Group on Geospatial Information of the Inter-agency and Expert Group on Sustainable Development Goal Indicators (IAEG-SDGs: WGGI) – June 2020

### INTRODUCTION

In the following, a short introduction to the objectives, tasks and scheduled activities of the renewed UN-GGIM:IAEG-SDGs WGGI, fully based on the Working Group revised work plan, and prepared by Italy and Denmark members of the WG. Additional information and released document can be found at <https://ggim.un.org/UNGGIM-wg6/>

On 6 March 2015, the United Nations Statistical Commission created the Inter-Agency and Expert Group on SDG Indicators (IAEG-SDGs), composed of Member States and including regional and international agencies as observers. The IAEG-SDGs was tasked to develop and implement the global indicator framework for the Goals and targets of the 2030 Agenda. In 2016, the IAEG-SDGs noted that the integration of geospatial information and statistical data will be key for the production of a number of the indicators and has been created the Working Group on Geospatial Information, reporting to the IAEG-SDGs (UN-GGIM: IAEG-SDGs WGGI), in which UN-GGIM:Europe was represented by Fabio Volpe (IT) and the Pier-Giorgio Zaccheddu (DE)

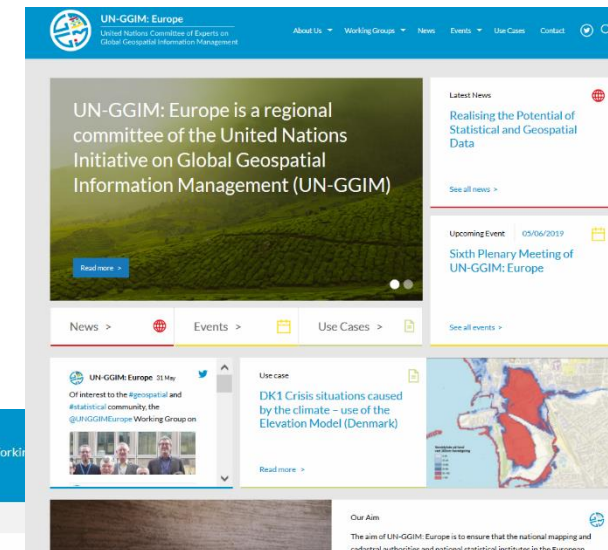
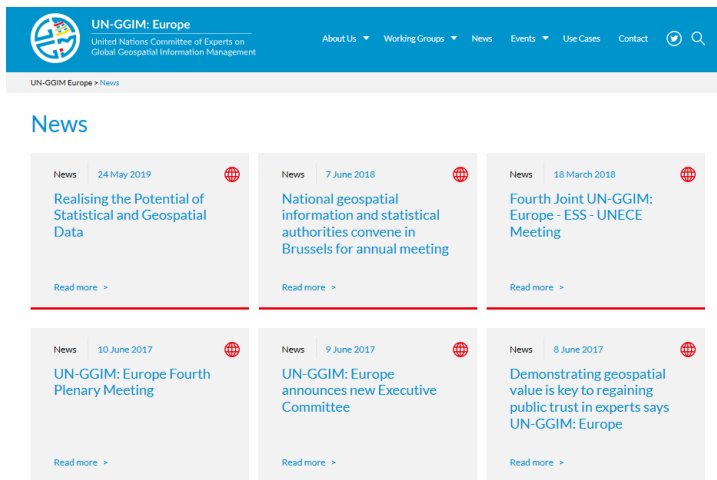
In July 2019, the IAEG-SDGs, renewed its composition and updated the Terms of Reference for its Working Group on Geospatial Information (WGGI) to achieve a greater working relationship, synergy and coordination between the statistical and geospatial information communities. The Terms of Reference provide the objectives, governance, tasks and membership of the WGGI. They established the next phase of the work of the WGGI, and enables it to build on its existing contributions, including the use of geospatial tools for the analysis, production and dissemination of a number of indicators of the global indicator framework.

- ✓ **New ‘Terms of Reference’:**  
the roles of the nominated experts for Regional Committees terminated (UN-GGIM: Europe: Italy and Germany)
- ✓ **Italy and Denmark** confirmed their membership
- ✓ Both experts are **members of the Working Group on Data Integration** as well!

Prepared by Italy and Denmark







# Find out more about UN-GGIM: Europe

- [UN-GGIM: Europe website](#)
- [Twitter](#)

## Working Group Data Integration



### 1 Point of Contact

Pier-Giorgio.Zaccheddu  
Pier-Giorgio.Zaccheddu[at]bkg.bund.de

The Working Group on Data Integration is chaired by Germany and deals with the integration of geospatial data with other information. Currently National Mapping and Cadastral Authorities and National Statistical Institutes from about 20 European UN Member States are members of this Working Group. Eurostat and the Joint Research Center (JRC) actively cooperate in the Work Group since the beginning in 2014. The European Environment Agency (EEA) joined the Work Group in 2017.



UN-GGIM: EUROPE

UNITED NATIONS COMMITTEE OF EXPERTS ON  
GLOBAL GEOSPATIAL INFORMATION MANAGEMENT



# Thank you!

Pier-Giorgio Zaccheddu

Contact: UN-GGIM: Europe Working Group Data Integration

[pier-giorgio.zaccheddu@bkg.bund.de](mailto:pier-giorgio.zaccheddu@bkg.bund.de)



**UN-GGIM  
EUROPE**

UNITED NATIONS  
COMMITTEE OF EXPERTS ON  
GLOBAL GEOSPATIAL  
INFORMATION MANAGEMENT

