

UN-GGIM: Europe plenary meeting
22 and 23 June 2020

UN-GGIM: Europe Working Group on Core Data Report and update

Clément Godin, Dominique Laurent, France



UN-GGIM: EUROPE

UNITED NATIONS INITIATIVE ON
GLOBAL GEOSPATIAL
INFORMATION MANAGEMENT



Introduction – Reminder



UN-GGIM: EUROPE

UNITED NATIONS INITIATIVE ON
GLOBAL GEOSPATIAL
INFORMATION MANAGEMENT



What is Core Data?

- Core data is **priority data**
 - Geospatial data
 - The most useful to analyse, achieve, or monitor the SDGs
 - Directly or indirectly



Working Group on Core Data: objectives

- **Define Core Data** and encourage UN European Member States to produce and supply it
- Common SDG requirements
 - Selected 14 core themes out of 34 INSPIRE themes

Annex I

Coordinate Reference Systems

Geographical Grid Systems

Geographical Names

Administrative Units

Addresses

Cadastral Parcels

Transport Networks

Hydrography

Protected Sites

Annex II

Elevation

Land Cover

Orthoimagery

Geology

Annex III

Statistical units

Buildings

Soil

Land use

Human health and safety

Utility and governmental services

Environmental monitoring facilities

Production and industrial facilities

Agricultural and aquaculture facilities

Population distribution - demography

Area management/restriction/regulation

Natural risk zones

Atmospheric conditions

Meteorological geographical features

Oceanographic geographical features

Sea regions

Bio-geographical regions

Habitats and biotopes

Species distribution

Energy resources

Mineral resources

Working Group on Core Data: objectives

- **Define Core Data** and encourage UN European Member States to produce and supply it
- Common SDG requirements
 - Selected 14 core themes out of 34 INSPIRE themes
 - 'Recommendations for Content' for core themes, based on INSPIRE
 - Priorities for producing new data or for improving existing data
 - Common (minimum) content



Working Group on Core Data: iterative process

- Phase 1: Preparation (investigation, discussions...)
→ initial draft
- Phase 2: Review by WG A on core data
→ consolidated draft
- Phase 3: Review by whole geo-statistical community
→ definitive deliverable



Recommendation for content

Core data themes state-of-play



UN-GGIM: EUROPE

UNITED NATIONS INITIATIVE ON
GLOBAL GEOSPATIAL
INFORMATION MANAGEMENT



Progress since last year: Recommendations for Content (in green)

- Finalised for theme 'Cadastral Parcels'
- Draft available (v1.0) for themes
 - **Addresses**
 - Geographical Names
 - **Administrative Units**
 - Buildings
 - Basic Services
 - **Statistical units**

Definitive deliverables finished
(but not yet published)



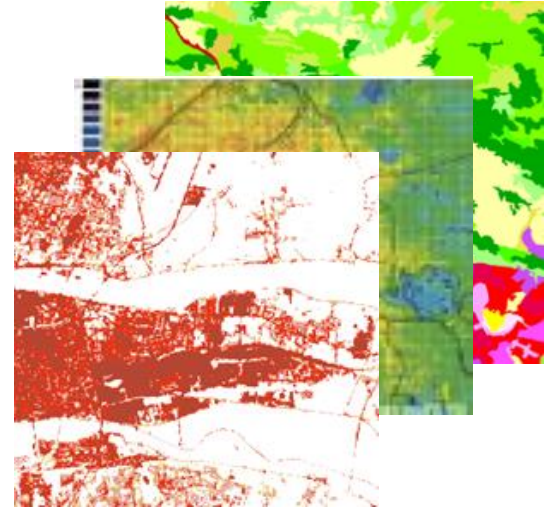
Progress since last year: Recommendations for Content

- Deliverable on following themes consolidated and submitted to review by the geostatistical community
 - **Area Management**
 - **Transport Network**
 - **Hydrography**
 - **Ortho-imagery**
 - **Elevation**



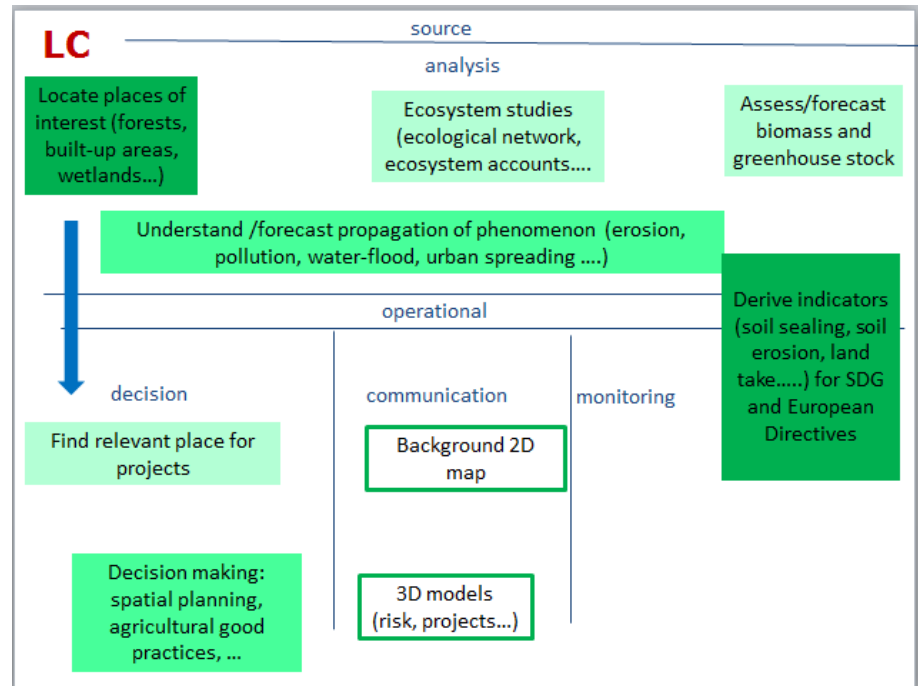
Progress since last year: Work on 'Land Cover'

- Main trends
 - Need for large scale data
 - Various possible approaches
 - no product-oriented recommendations
 - Some common characteristics (e.g. territory partition)
 - Need for agricultural data (crop maps)
 - Interest for ensuring Corine Land Cover time series continuity



Progress since last year: Work on 'Land Use'

- Existing land use
 - need for large scale data (as LC)
- Planned land use
 - similar recommendations as for 'Regulated or Managed zones'



Use case for 'Land Cover'



Core Data Implementation



UN-GGIM: EUROPE

UNITED NATIONS INITIATIVE ON
GLOBAL GEOSPATIAL
INFORMATION MANAGEMENT



A new deliverable



- Objectives : provide UN-GGIM: Europe Executive Committee
 - State-of-play of what has been done to promote core data
 - Ideas & recommendations about what might or should be done in future
- Currently available as Table of Content



What has been done do far

- Communication
 - At European level
 - At national level
- Review of core data deliverables by geostatistic community
- Bibliography
 - Core data mentioned in other documents (mainly related to UN-GGIM)
- Interest from the European Commission



Vision

- Core data driving national implementation

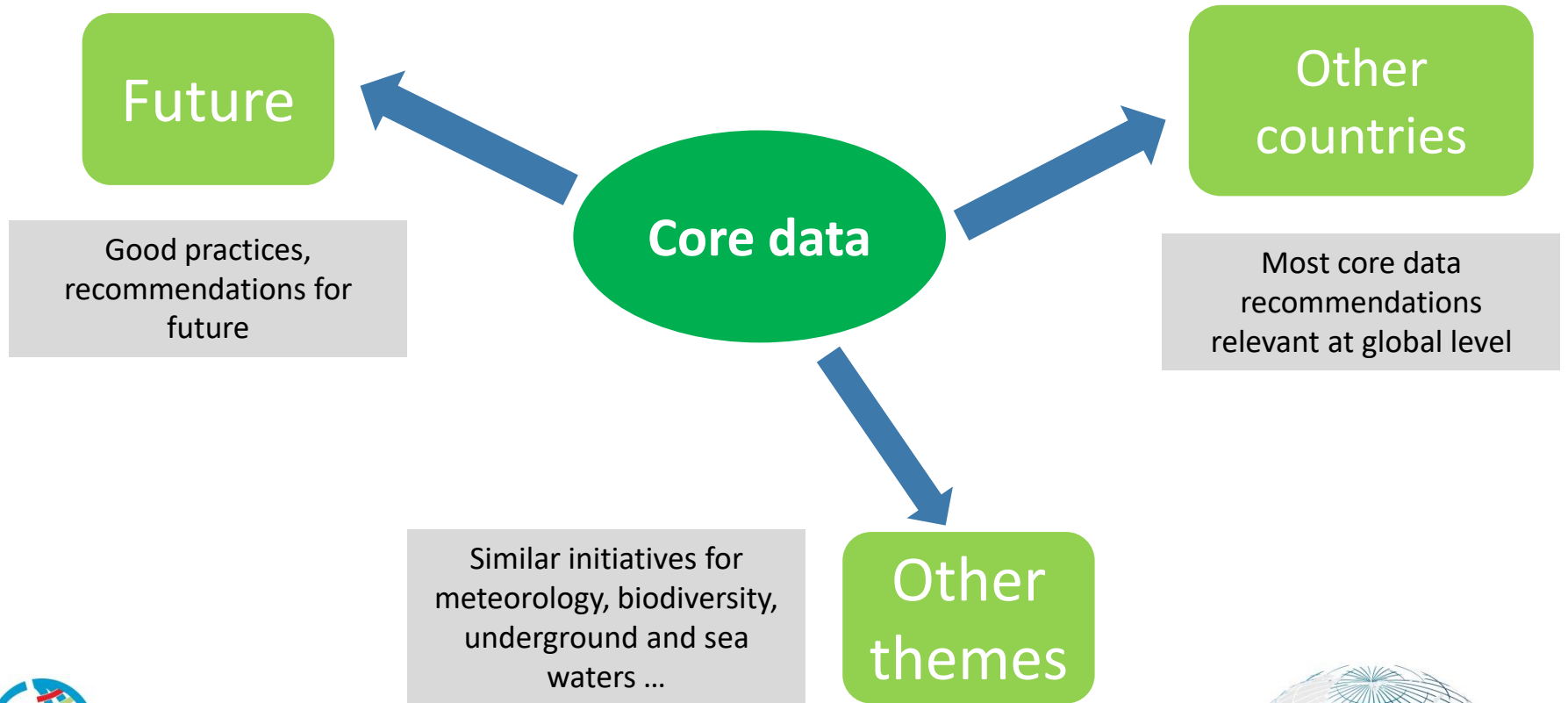


- Core data fostering creation of thematic data directly serving specific user needs
- Core data driving pan-European data sets
 - Core data fostering supra-national comparability and data aggregation
 - For themes of interest



Vision

- Core data extensions



Action plan

Your input would be welcome
(ask for template)

- Some first ideas
 - Upgrade UN-GGIM: Europe WGA website
 - FAQ
 - **Implementation examples**
 - Communication plan
- To be done:
 - Use the **Vision** as starting point
 - To identify relevant **Actions**



Core data, INSPIRE and high value datasets



UN-GGIM: EUROPE

UNITED NATIONS INITIATIVE ON
GLOBAL GEOSPATIAL
INFORMATION MANAGEMENT



INSPIRE Work Programme 2020

- Area of work 1: “Towards a common implementation landing zone”
- Identify a **limited core set of data** for which full interoperability should be pursued
 - Priority data for environmental reporting
 - Priority data for European Commission
 - High Value Datasets (HVD)



INSPIRE Conference 2020

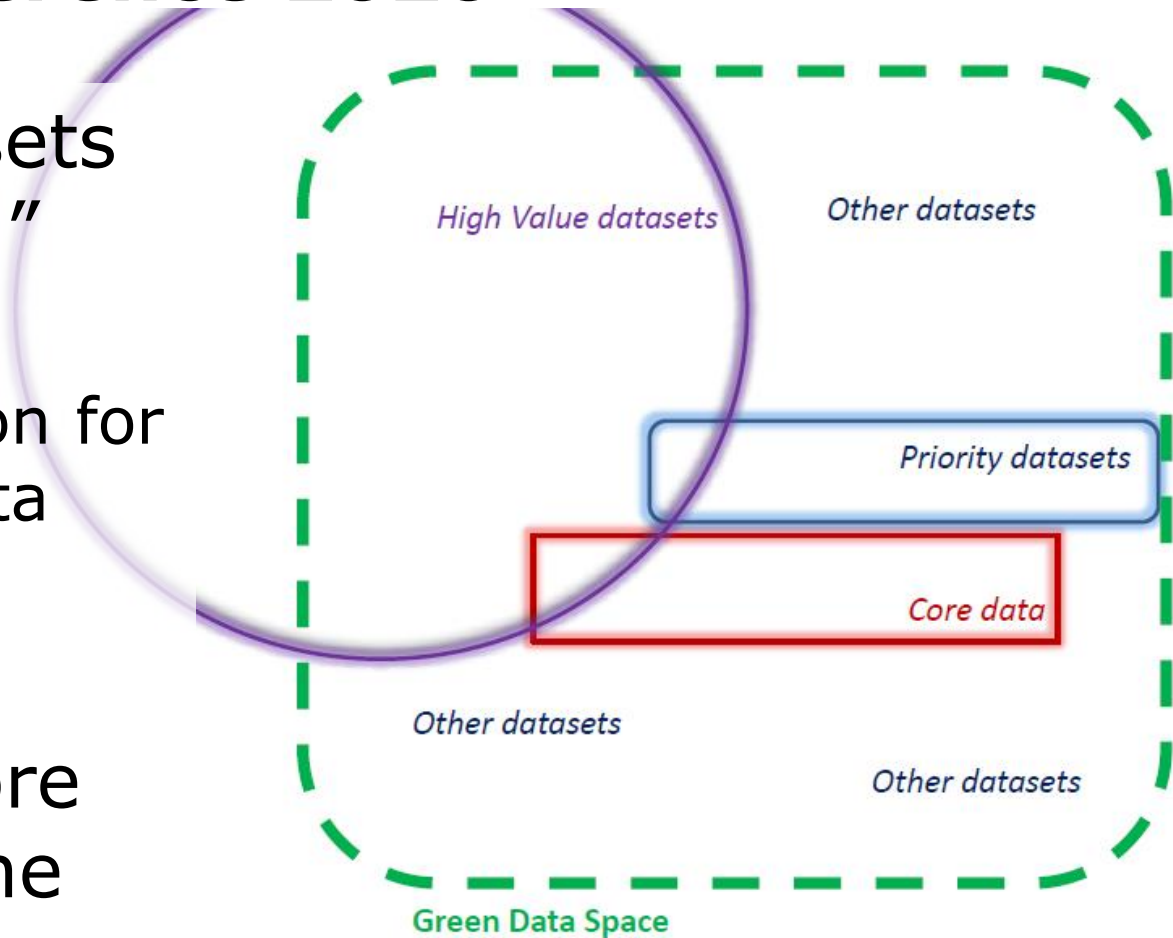
- Presentation “Building the Green Data Space”
 - Made by GISCO
 - Priority geospatial datasets for European Commission needs
 - **Buildings**
 - **Cadastral Parcels**
 - **Addresses**
 - **Administrative units**
 - **Statistical Units**
 - **Transport Networks**
 - Land Parcel Information System
 - Postal Codes
 - **Utility and governmental services**



INSPIRE Conference 2020

- “Priority datasets for eReporting”
 - Made by EEA
 - Shared a vision for the Green Data Space

⇒ Including the concept of “core data” inside the Green Data Space



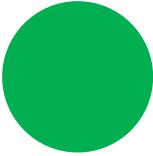




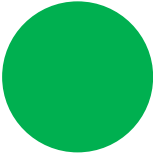
Evolution of INSPIRE: drawing conclusions

- Scope of INSPIRE Directive is wide
 - Decision to **prioritise a narrower scope** (related to datasets for EC and HVDs)
 - focusing interoperability
 - introducing more restrictive requirements
- ⇒ Good opportunity to work on a connection between core data from UN-GGIM: Europe and these priority datasets from INSPIRE

WG A is available to cooperate



WG A's view on PSI and high value datasets

High value data criteria (PSI)	Core data (UN-GGIM: Europe)
Generate significant socio-economic or environmental benefits and innovative services	 <p><i>Core data is priority data to analyse, achieve, or monitor SDG</i></p>  <p><i>Generating innovative services is not a core data target (but it may contribute to it)</i></p>
Benefit a high number of users in particular SMEs	 <p><i>Core data should in general be accessible to everyone</i></p>  <p><i>Main target is public bodies but SMEs may also benefit from core data</i></p>
Assist in generation revenues	 <p><i>Generating revenues is not core data target</i></p>
Be combined with other datasets	 <p><i>Combined with other datasets, core geographic data offers wide range of applications: background map, geocoding, indicator computation...</i></p>



Conclusions



UN-GGIM: EUROPE

UNITED NATIONS INITIATIVE ON
GLOBAL GEOSPATIAL
INFORMATION MANAGEMENT



Conclusion

- Recommendations for content of core data
 - Most themes close to final version
- **Core Data Implementation**
 - Connecting with INSPIRE and its prospects is more important than ever
 - Deliverable “Promoting core data implementation” under preparation by WG A
 - **Recommended to become one of the main objectives of the geostatistical community**

