



Overview of Eurostat's Geographical Information activities

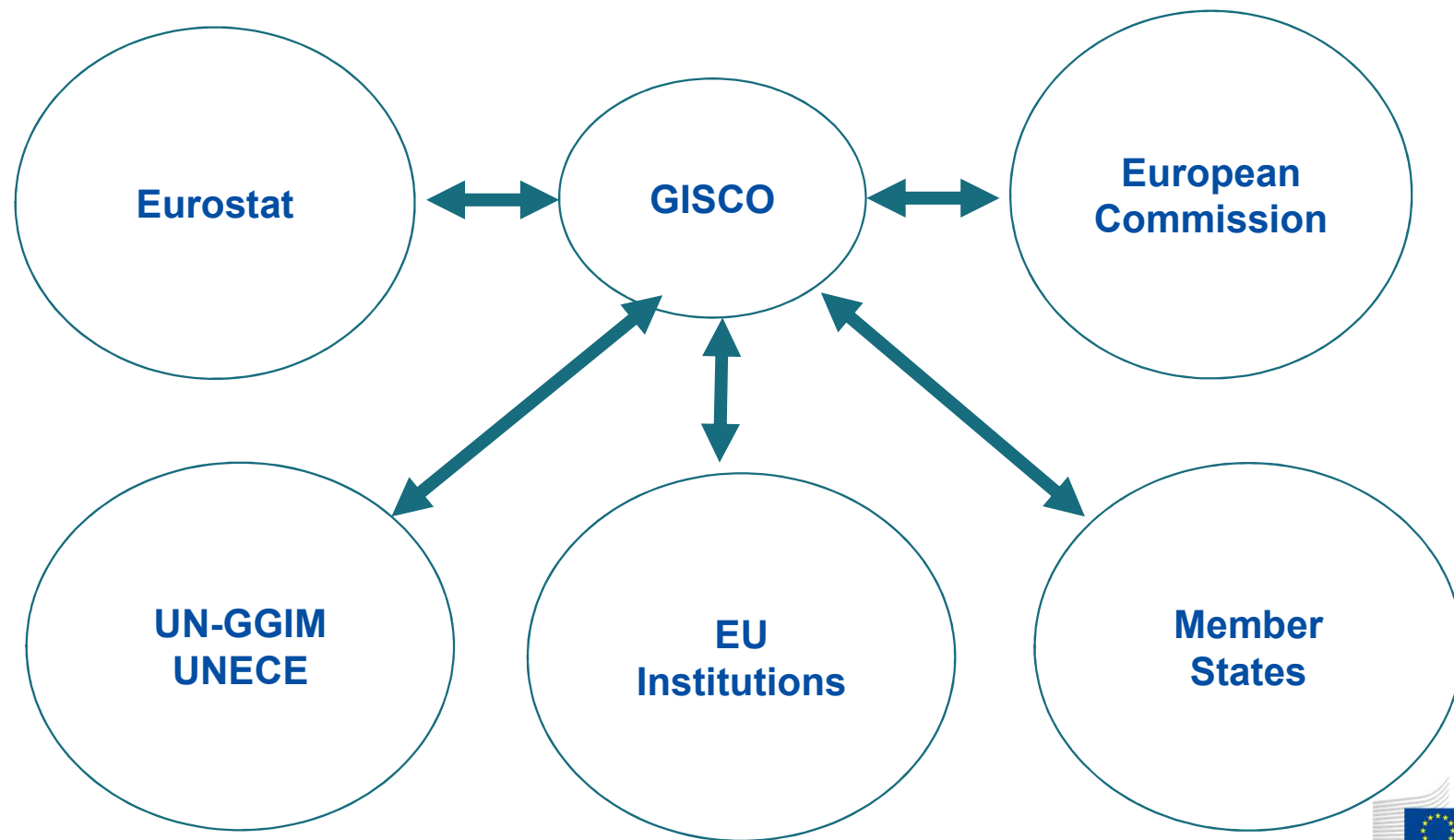
Item 3

GISCO Working Group, 26-27 March 2020

GISCO - The Geographic Information System of the COMmission

- GISCO is a permanent service of Eurostat that answers the needs of Eurostat and the European Commission for geographical information at the level of the European Union, its Member States and regions.
- GISCO's main task is to provide reference geographical information and related services for use within Eurostat and the Commission and to the European citizens at large.

GISCO - Stakeholders



The main GISCO activities

- Management of the geographical reference database of the Commission
- Operation of the spatial data infrastructure of the European Commission including corporate level services
- Data processing, mainly for thematic mapping, spatial analysis, and data dissemination
- Coordinate mapping activities within the Institutions and provide guidelines for maps
- Chair the Commission's Inter-Service Group on Geographical information (COGI) for information exchange and internal EC coordination.
- Lead actions under the Commission's Information Management Steering Board (geospatial data management, development of pan-European geospatial datasets, capacity building, etc.)

The main GISCO activities

- Cooperation in initiatives for the establishment of a geographical information infrastructure at European level (INSPIRE coordination team).
- Spatial analysis for other EU institutions
- Chair of the GISCO working group of National Statistical Institutes and National Mapping and Cadastral Authorities
- Support and promote activities for the integration of statistics and geospatial information, (links with Eurostat thematic units, maps, GEOSTAT, EFGS, UNECE)
- Participation to UN-GGIM and UN-GGIM: Europe initiatives representing the European Commission

The geographical reference database

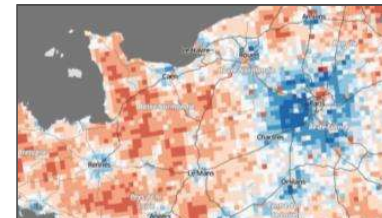
It contains most of the essential geographical datasets of the Commission such as topographic data and political boundaries. Geographical reference data are:

- are data which are of common interest for multiple internal stakeholders
- have defined quality characteristics
- subject to a regular data maintenance regime

The main users are policy DGs such as MOVE, ENER, REGIO, AGRI, MARE, SANTE and ENV with a strong focus on regional policies. Other internal users are JRC and the European Environment Agency (EEA).

GI data sources

- Topographic and cadastral data from NMCA's and Eurogeographics
- Statistical data from NSIs and Eurostat
- Environmental data from National environmental agencies, EEA
- National and EU geoportals and geo-catalogues



European Commission geoportal



The screenshot shows the homepage of the European Commission Geoportal. At the top, there is a navigation bar with links for Search, Map, About, Legal notice, Contact, and a user login section. Below this is a blue header with the European Commission logo and the title "Geoportal of the European Commission". A secondary blue bar also displays the title. The main content area is divided into several sections. On the left, a "Get started" section includes a search bar with the text "Search over 192 data sets, services and maps, ..." and a search button. Below this is a "Browse by" section with two tabs: "INSPIRE themes" (selected) and "topics". Under "INSPIRE themes", there are three columns of icons representing different data categories: Elevation (11), Land cover (12), and Orthoimagery (7) in the first column; Statistical units (18), Buildings (3), and Land use (12) in the second; and Human health ... (22), Utility and gov... (22), and Environmental ... (5) in the third. On the right, there is a "EUROSTAT Data Portal" section with the text "Here you will find data, services and maps and more." Below this is a "Browse resources" section with three categories: Dataset (126), Service (43), and Series (23), each represented by a green icon.

Search | Map | About | Legal notice | Contact | [User] (registered user) | Sign out

 Geoportal of the European Commission

Geoportal of the European Commission

Get started

Search over **192** data sets, services and maps, ...

Search ... 

Browse by ☒ **INSPIRE themes** ☐ topics



Elevation
11



Land cover
12




Orthoimagery
7



Statistical units
18



Buildings
3



Land use
12



Human health ...
22



Utility and gov...
22



Environmental ...
5

EUROSTAT Data Portal

Here you will find data, services and maps and more.

Browse resources



Dataset
126



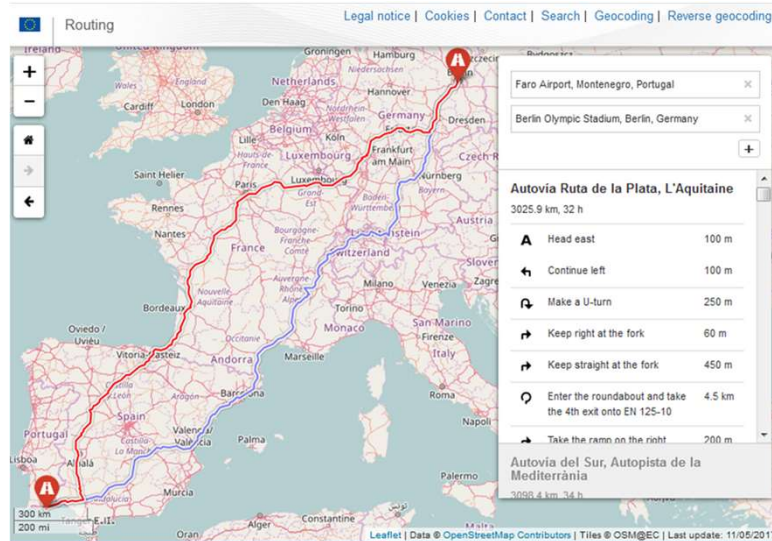
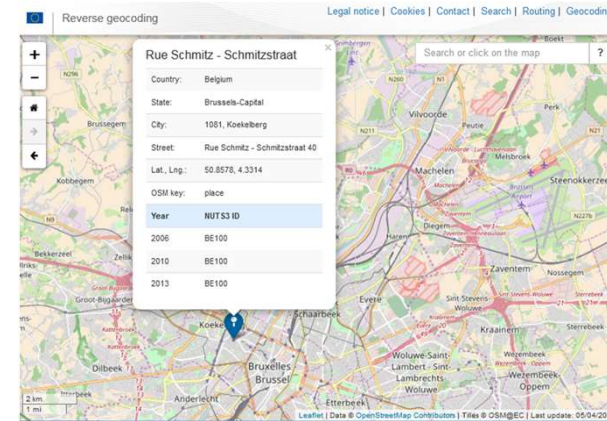
Service
43

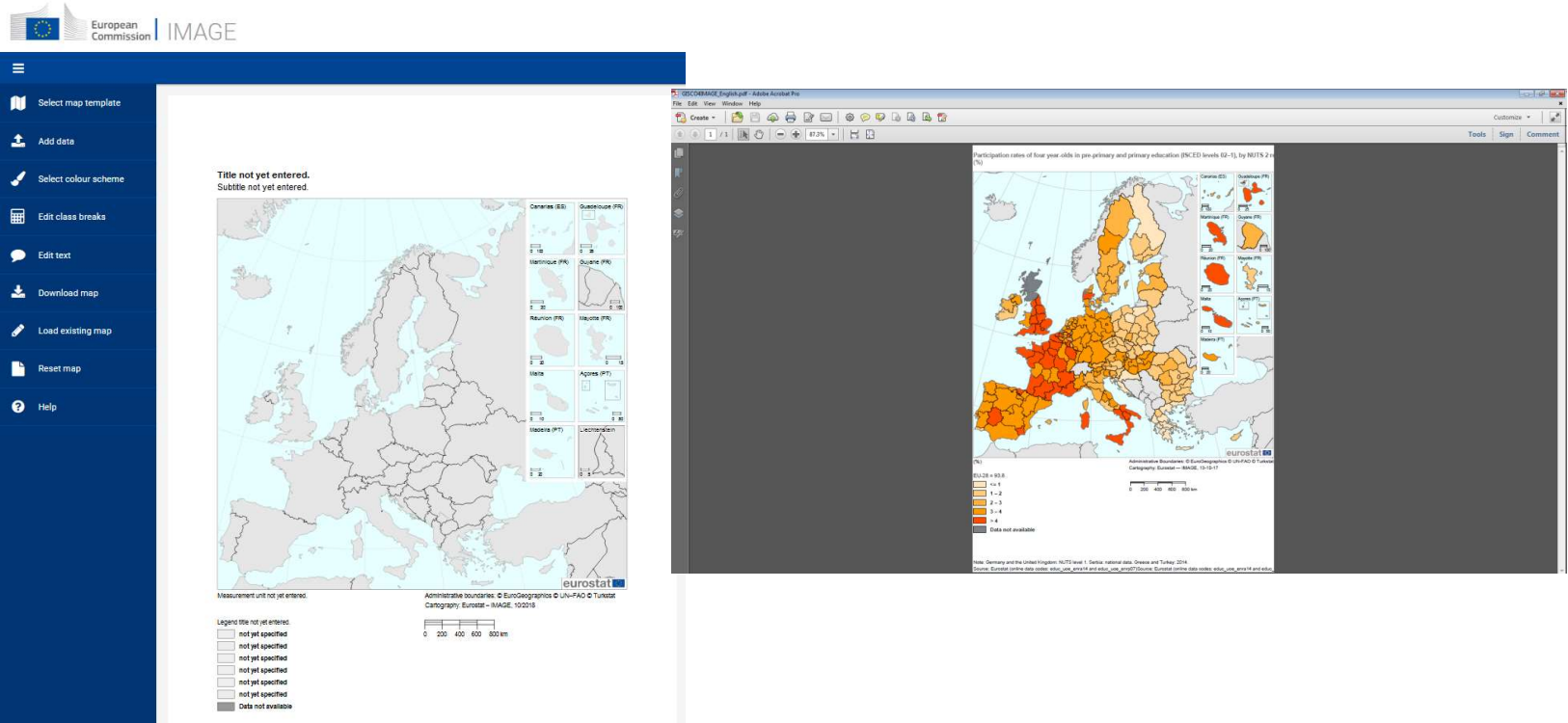


Series
23

GISCO - Corporate level services

- Geocoding services
- Routing Services
- NUTS Location Service





<http://intragate.ec.europa.eu/image/>

Spatial analysis

Example: Airport Catchment areas

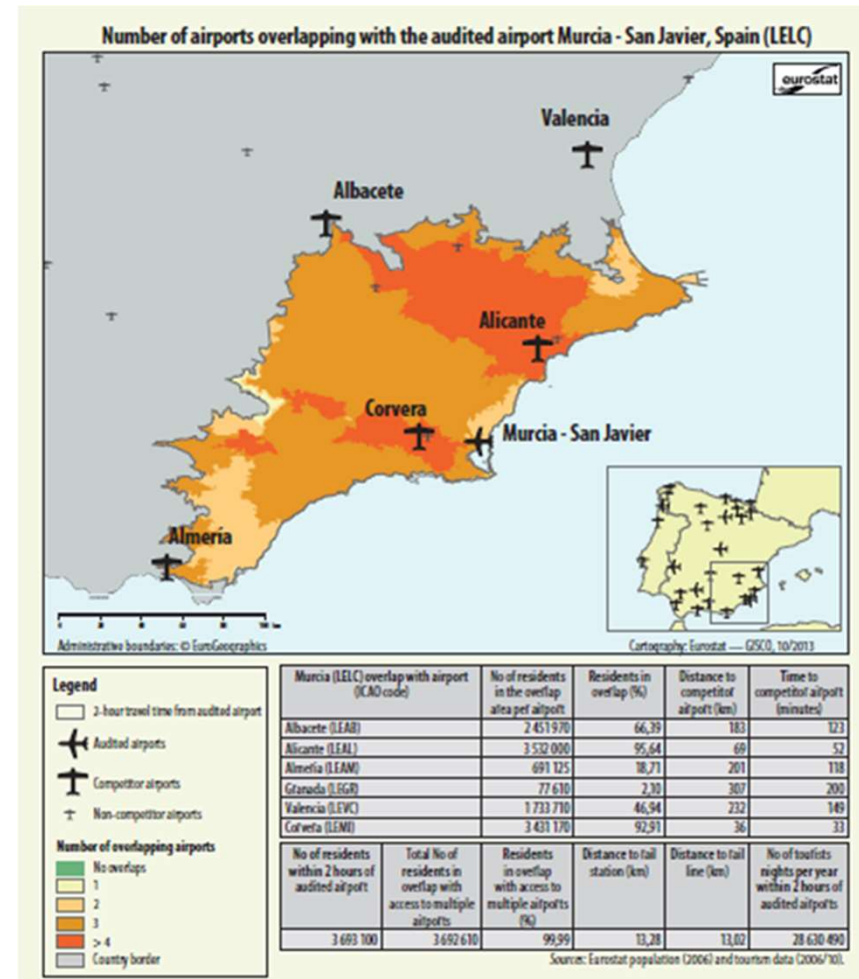
- [ECA found](#) that more than 2/3 of the airports have largely overlapping catchment areas and often a large number of residents could reach several competing airports in less than two hours

Empty and unused airport infrastructures

The cargo project at Thessaloniki airport in Greece involved building two new cargo terminal buildings, the renovation of two existing cargo buildings and the construction of a parking area. The two newly built cargo buildings remained empty (see [Picture 7](#)), and only one of the two renovated cargo buildings was in regular use at the time of the audit visit (EU funds involved: 7 million euro). There was no evidence of any study being carried out to demonstrate a need to extend capacity for air cargo in the region.



Picture 7 — One of the two new cargo buildings at Thessaloniki airport which were empty at the time of the audit visit



EU GEOSTAT projects

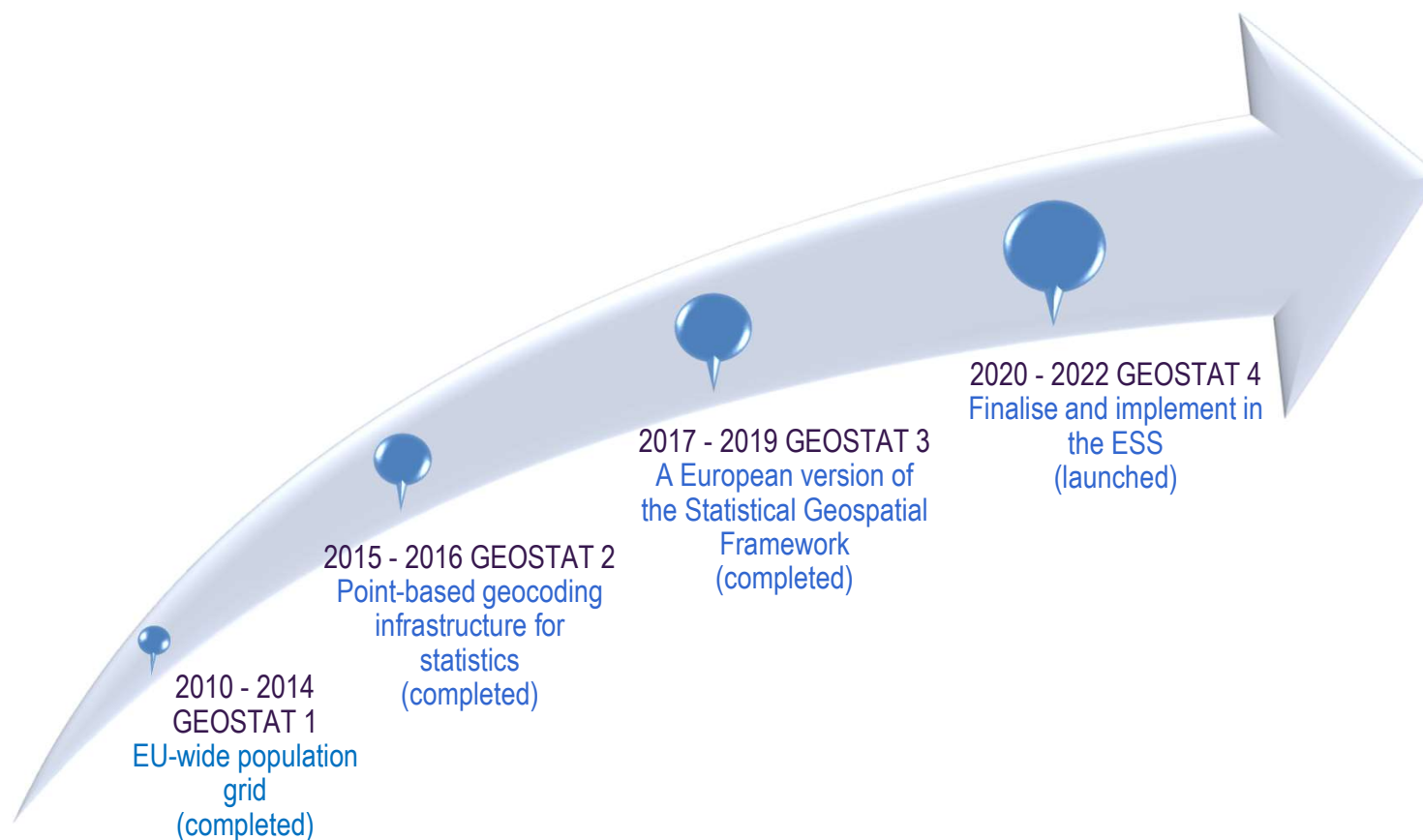


Figure 2: Service areas within 30 minutes driving time of an emergency medical care centre

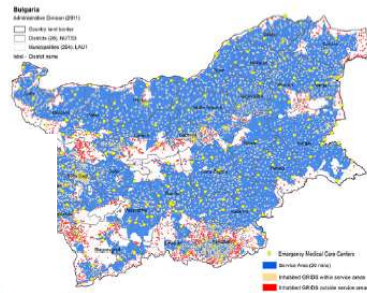


Figure 2: Commuting distance and median time

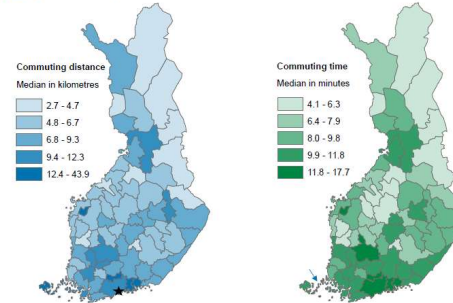
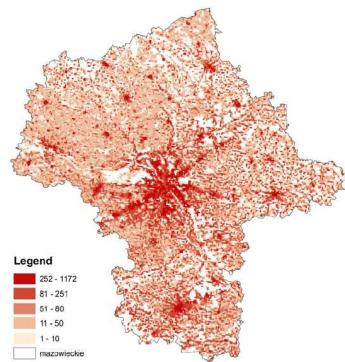


Figure 6: Number of single-family houses/ km²



2012 - 2019

Over 40 national projects on merging statistics and geospatial information supported by Eurostat

Over 40 national projects on merging statistics and geospatial information supported by Eurostat

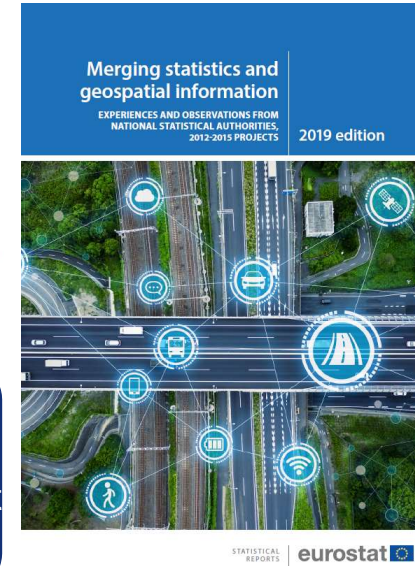
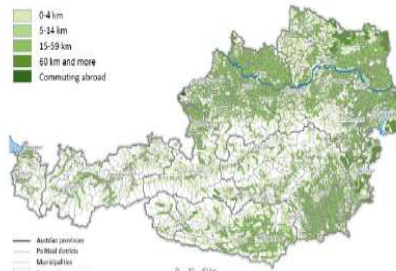


Figure 1: Most frequent distance travelled by economically active commuters, 2013



Note: Vienna is presented as one municipality.
Source: Labour market register, Statistik Austria

Figure 1: Example of spatial visualisation of demographic data, Poland

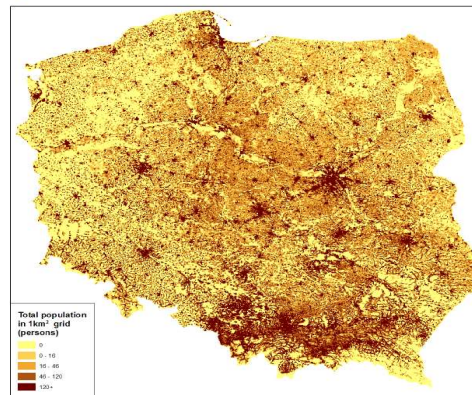
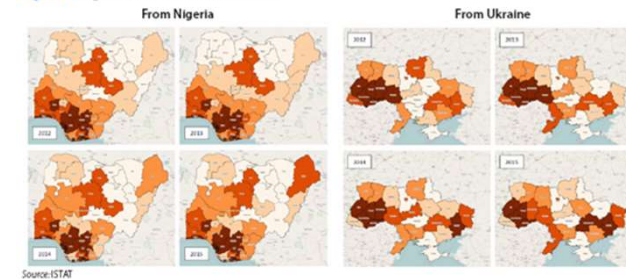


Figure 1: Migratory flows to Italy, 2012-2015



Source: ISTAT

Summary

The GISCO team:

- A support and coordination service of the European Commission on the use of GIS
- Maintains the geographical reference database
- Analytical and development capacity
- As part of the ESS: promotes and supports the integration of geospatial information and statistics
- Represents internationally the EC on geographical information related actions.

You can contact us:

estat-gisco@ec.europa.eu

Thank you