



# UN-GGIM Thematic groups: Geospatial Societies & Academic Network

Menno-Jan Kraak



# UN-GGIM Thematic groups: Geospatial Societies & Academic Network

- Geospatial Societies
  - Academic Network
  - Operational Context
  - Needs
  - Next
- ▶ What we are and what we aim at
  - ▶ Members and Governance
  - ▶ How we work and what we do





UN-GGIM: Geospatial Societies

UNITED NATIONS COMMITTEE OF EXPERTS ON  
GLOBAL GEOSPATIAL INFORMATION MANAGEMENT

## **We are ...**

a coalition of the Presidents, Secretaries-General or equivalent office bearers or their nominees that lead recognized international organizations involved in the coordination, development, management, standardization or regulation of geospatial information and related matters.

## **Our aim ...**

Support the work of the UN-GGIM while leverage their global networks which are typically thematically organized and aligning these with working group topics

<http://www.fig.net/unggimgs/>



UN-GGIM: Europe

United Nations Committee of Experts on  
Global Geospatial Information Management



## Members and governance



IEEE Geoscience and Remote Sensing Society (IEEE-GRSS)



International Association of Geodesy (IAG)



International Cartographic Association (ICA)



International Federation of Surveyors (FIG)



International Geographical Union (IGU)



International Map Industry Association (IMIA)



International Society of Photogrammetry and Remote Sensing (ISPRS)

Chair rotates annually: current **Menno-Jan Kraak**

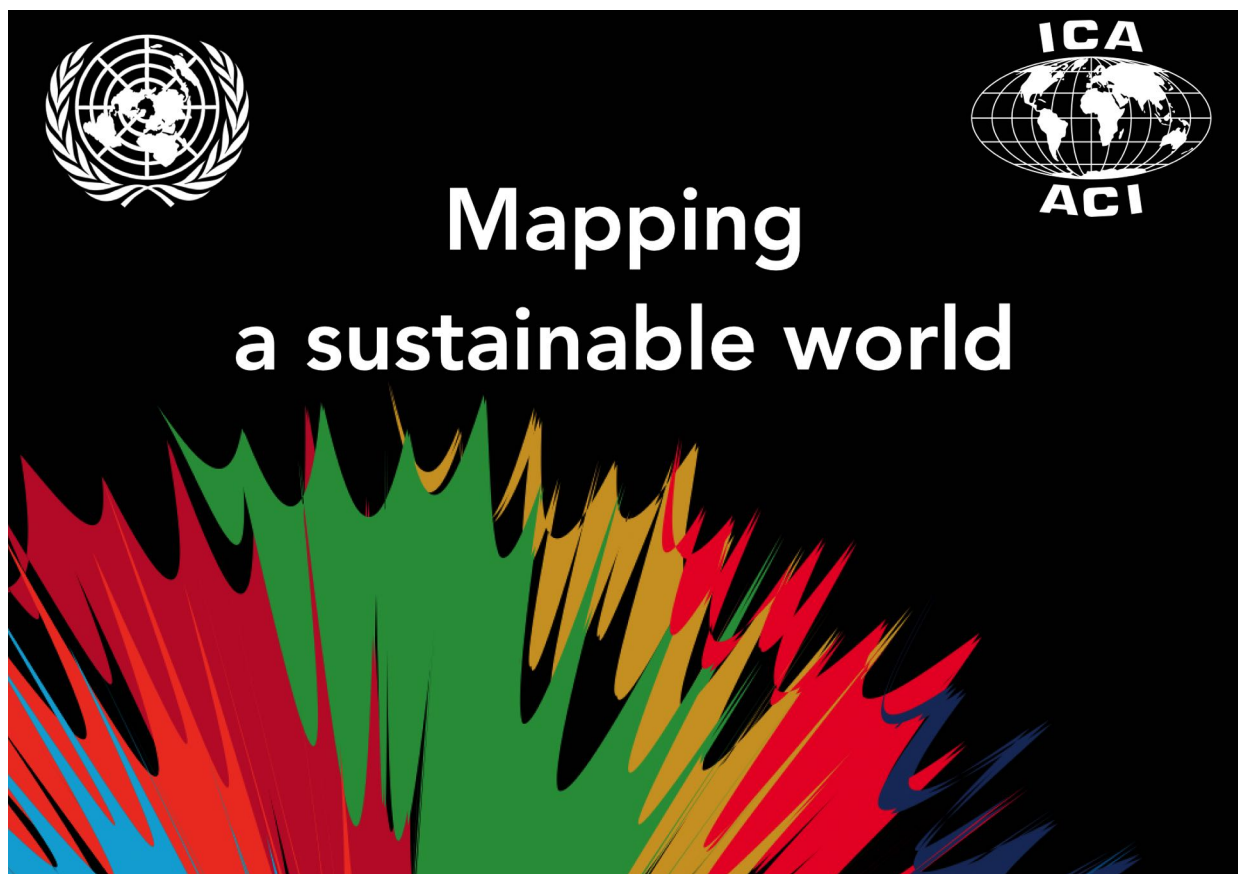




UN-GGIM: Geospatial Societies

UNITED NATIONS COMMITTEE OF EXPERTS ON  
GLOBAL GEOSPATIAL INFORMATION MANAGEMENT

## Project: from posters to book



UN-GGIM: Europe

United Nations Committee of Experts on  
Global Geospatial Information Management



UN-GGIM: Geospatial Societies

UNITED NATIONS COMMITTEE OF EXPERTS ON  
GLOBAL GEOSPATIAL INFORMATION MANAGEMENT

## How we work and what we do



UN-GGIM: Europe

United Nations Committee of Experts on  
Global Geospatial Information Management





## We are ...

a coalition of recognized universities and research and education centers involved in research, development and education on geospatial, land information and related matters, run on a volunteer basis. Its primary objective is to support the aims and objectives of Committee of Experts by facilitating access globally to research and education capabilities for UN-GGIM and its affiliated members in order to identify and respond to challenges and opportunities for UN-GGIM and related UN offices.

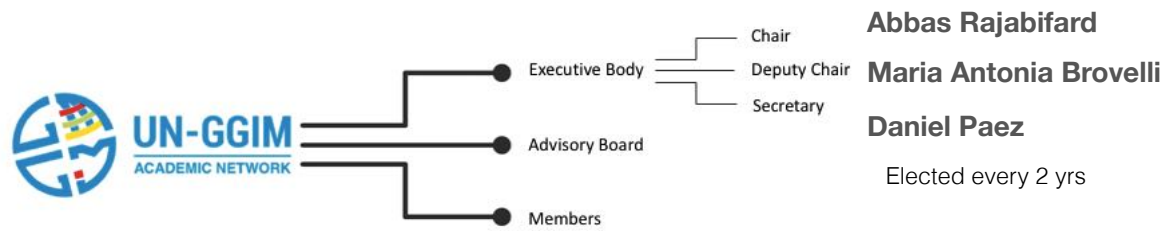
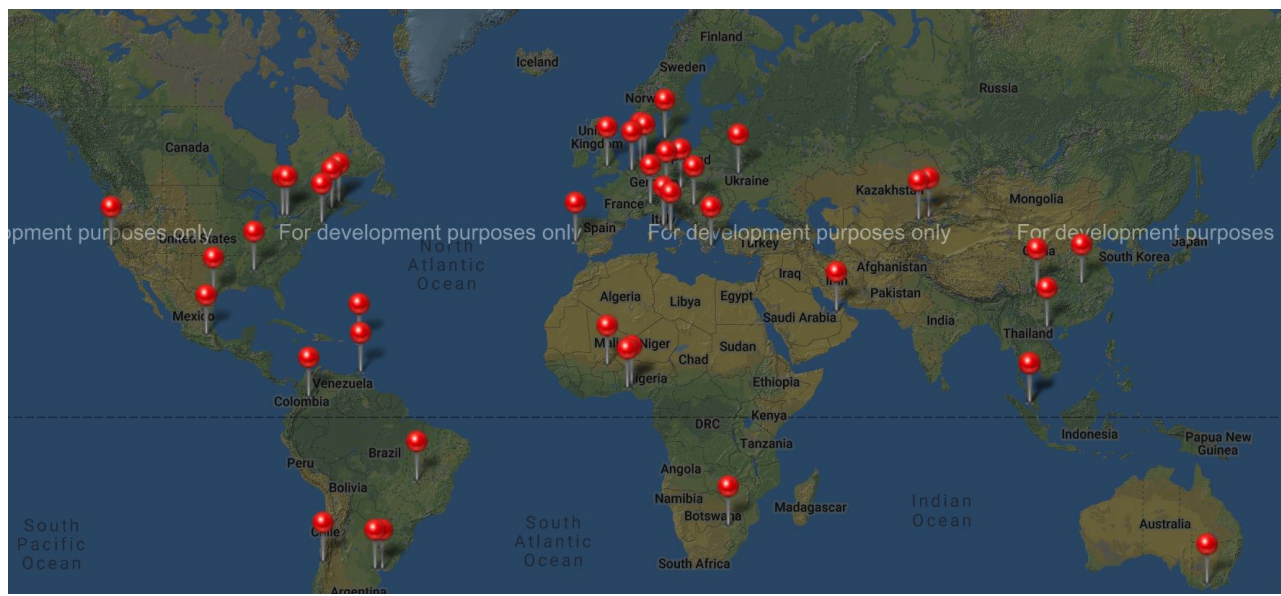
## Our aim ...

is to provide academic counsel and guidance to UN-GGIM concerning strategic knowledge, research, education and training





# Members and governance







UN-GGIM: Academic Network

UNITED NATIONS COMMITTEE OF EXPERTS ON  
GLOBAL GEOSPATIAL INFORMATION MANAGEMENT

## How we work and what we do

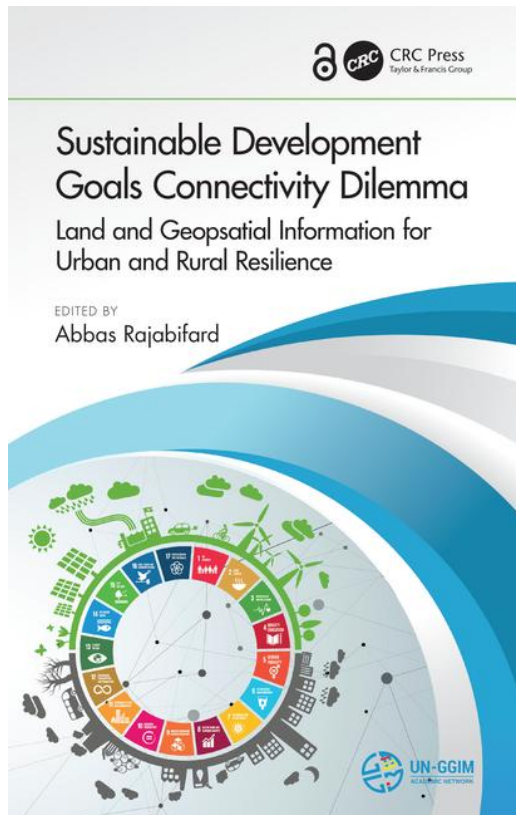


UN-GGIM: Europe

United Nations Committee of Experts on  
Global Geospatial Information Management



## Project: from forum to book



### Table of Contents

Introduction. SDGs Roadmap: Setting the Scene. Spatial Enablement for Sustainable Development. Geospatial Information Enhancing SDG Connectivity. Links between Urban and Rural Resilience for Sustainability. Legal, Policies and Institutional Components. Technical and Enabling Tools. Way Forward and Future Direction.



# Operational context

Subcommittee  
Expert Groups  
Working Groups

1. Working Group on Development of a Statement of Shared Principles for the Management of Geospatial Information
2. Working Group on Trends in National Institutional Arrangements in Geospatial Information Management
3. Working Group on Geospatial Information and Services for Disasters
4. Working Group on Global Fundamental Geospatial Data Themes
5. Working Group on Legal and Policy Frameworks for Geospatial Information Management
6. Working Group on Marine Geospatial Information

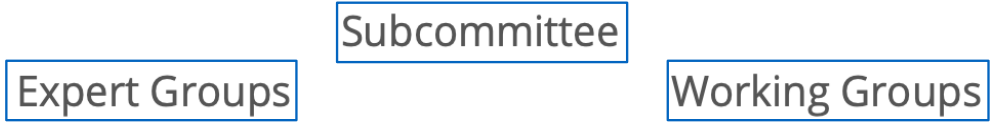
UN-GGIM Africa  
UN-GGIM Europe  
UN-GGIM Arab States  
UN-GGIM Americas  
UN-GGIM Asia-Pacific



Academic Network  
Geospatial Societies  
Private Sector Network

- Members:**
- IEEE Geoscience and Remote Sensing Society (GRSS)
  - International Association of Geodesy (IAG)
  - International Cartographic Association (ICA)
  - International Federation of Surveyors (FIG)
  - International Geographical Union (IGU)
  - International Map Industry Association (IMIA)
  - International Society of Photogrammetry and Remote Sensing (ISPRS)

# A perspective



volunteers

- Members:**
- IEEE Geoscience and Remote Sensing Society (GRSS)
  - International Association of Geodesy (IAG)
  - International Cartographic Association (ICA)
  - International Federation of Surveyors (FIG)
  - International Geographical Union (IGU)
  - International Map Industry Association (IMIA)
  - International Society of Photogrammetry and Remote Sensing (ISPRS)

Geospatial Societies



# Needs



**UN-GGIM: Europe**

United Nations Committee of Experts on  
Global Geospatial Information Management

**What do you want?**

**What do expect?**

**What do offer?**



**UN-GGIM: Europe**

United Nations Committee of Experts on  
Global Geospatial Information Management

# Next

We the **Academic Network** and the **Geospatial Societies** ...

- are working closely in order to deliver a better values to member states.
- will have a joint side event at the 9th UNGGIM meeting in August.
- wonder if there are any items for which you need our input or assistance
- invite UNGGIM Europe members to identify and encourage their universities to join the Academic Network.
- encourage UNGGIM Europe members to actively participate in Geospatial Societies events



UN-GGIM: Europe

United Nations Committee of Experts on  
Global Geospatial Information Management





Let's make the world a better place with maps

# Needs



**UN-GGIM: Europe**

United Nations Committee of Experts on  
Global Geospatial Information Management

**What do you want?**

**What do expect?**

**What do offer?**



**UN-GGIM: Europe**

United Nations Committee of Experts on  
Global Geospatial Information Management