

# Work Plan for 2017-2020

Ezio Bussoletti,  
Member of the Executive Committee, Italy



**UN-GGIM**  
**EUROPE**

UNITED NATIONS  
COMMITTEE OF EXPERTS ON  
GLOBAL GEOSPATIAL  
INFORMATION MANAGEMENT



*3<sup>rd</sup> Plenary Meeting*  
*5<sup>th</sup> October 2016*  
*Budapest, Hungary*

# UN-GGIM: Europe Work Plan

- UN-GGIM: Europe work plan for 2014-2017 was adopted at the inaugural meeting in 2014
- Plan was further extended at 2<sup>nd</sup> Plenary in 2015
- Gave direction for:
  - Working Group A – Core Data
  - Working Group B – Data Integration
  - The Secretariat
  - Establishment of new working groups
- Work Plan for 2017-2020
  - Update the current work plan
  - Adopt this new work plan



# Build on existing foundations

The ambition from the outset, and the ongoing intention, of UN-GGIM: Europe is to:

- avoid duplication of efforts
- improve the joint response to user needs and requirements
- encourage geospatial data interoperability, harmonisation and sharing
- optimise the overall management of geospatial information in Europe



# Current Work Plan 2015-2018

Work Plan, updated and adopted last year, focused on the following objectives:

- Increasing data interoperability and harmonisation by proposing core geospatial data which meets essential user needs (Work Group A)
- Enabling integration of core geospatial data with other data in order to foster further usage (Work Group B)
- Furthering the work of the Executive Committee and carrying out the functions of UN-GGIM: Europe (the Secretariat)
- Implement work in new topic areas:
  - Determination of Global Fundamental Geospatial Data Themes
  - Global Geodetic Reference Frame
  - Sustainable Development Goals



# Proposed Work Plan 2017-2020

## Working Group on Core Data (Work Group A)

### 1. Specifications of core data (End of 2017):

a) identify the users and their needs and requirements for core data, taking into account existing surveys of user needs and requirements as well as analysis of existing use cases and investigate available data from various sources and analyse gaps; (Delivered)

b) provide a description and technical specifications for core data, based on user needs and requirements, in accordance with INSPIRE and other relevant legislations and making use of the outcomes and specifications of other initiatives, such as the ELF project; (On-going)

### 2. Report on economic model for production and distribution of core data;

### 3. Report on existing political and financial frameworks which support core data availability.



# Proposed Work Plan 2017-2020

## Working Group on Data Integration (Work Group B)



1. Definition of the priority user needs for combinations of data (**Delivered**)
2. Recommendation for methods implementing the prioritised combinations of data (**November 2016**)
3. Recommendation about how to manage side-effects induced by data combinations (**October 2016**)



New scope for the group: interact with the newly established IAEG-SDG Working Group on Geospatial Information

- a) Develop practical examples (best practice) on specific national implementations on how Geospatial Information can support in processes in achieving the SDGs and where the need shows to measure, monitor and mitigate challenges;
- b) Suggest links between communities: demographic, statistical and environmental data together with the Geospatial Location – ranging from the conceptual level to specific indicators.



# Proposed Work Plan 2017-2020

## Working Group on Geodetic Reference Frame in Europe (GRF-Europe)

1. Take note of the European contribution to the Global Geodetic Reference Frame, in particular the GGRF roadmap which is to be completed in 2016;
2. Recognise the insufficient connection between the existing geodetic infrastructure and social and political components within nations when applying the UN Resolution and impending GGRF roadmap, and make recommendations in this regard on a European level;
3. Formally set up a Working Group on Geodetic Reference Frames GRF-Europe within the UN-GGIM: Europe taking into account both the work of GGRF together with that of EUREF and other geo-referencing organisations in Europe in order to avoid duplication.



# Proposed Work Plan 2017-2020



## Working Group on Global Fundamental Geospatial Data Themes (WG Fundamental Data)

The Experts Committee mandated UN-GGIM: Europe to establish and lead a Global Working Group on Global Fundamental Geospatial Data Themes.

- Executive Committee of UN-GGIM: Europe acts as the steering group for WG Fundamental Data.
- The Executive Committee has appointed the United Kingdom to lead UN-GGIM: WG Fundamental Data, UN-GGIM: Europe is the permanent secretariat to the Working Group.
- A working group has been established with 16 members from UN Member States and three from observer organisations, has drafted Terms of Reference
- Global consultations have been held at 3 international events, the UN-GGIM HLF in Addis Ababa, the GWF16 Conference in Rotterdam and GGIM6 in New York.
- In interim report on the progress submitted at GGIM6
- WG Fundamental Data aims to finalise its work within 18 months for presentation at GGIM7
- It is expected that the Working Group will produce a first draft of a Resolution on Global Fundamental Geospatial Data Themes for the consideration of the Committee of Experts with the possibility of taking this to the General Assembly.





# Proposed Work Plan 2017-2020

## Tasks for the Secretariat

1. Cooperation with UN-GGIM Secretariat, other Regional Committees and the wider geospatial community (On-going) ✓
2. Compile and maintain knowledge base of the European NMCAs and NSIs (On-going) ✓
3. Support the Executive Committee in its relationship with Observer Organisations
  - a) Liaise between the Executive Committee and the with the different Organisations that have observer status with UN-GGIM: Europe;
  - b) Assist in discovering means by which the Observer Organisations can contribute to the work of UN-GGIM: Europe.

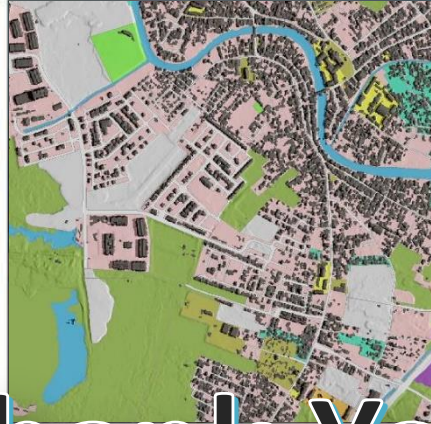


# Action Proposals

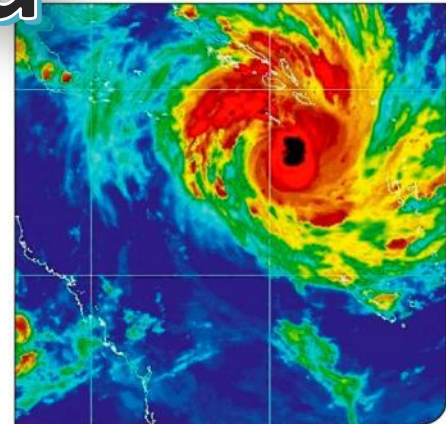
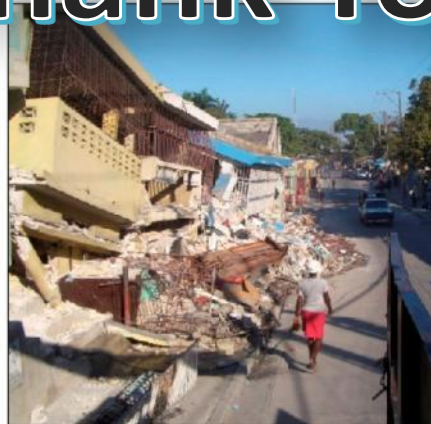
- The Executive Committee proposes that it be given the mandate to implement this Work Plan and to decide on how best to coordinate the regional work on the different topic areas.



# Unleashing the power of 'Where' ....



Thank You



... to make the world a better place.

