

Work Group B “Data Integration”

Item 6 – UN-GGIM: Europe working group on SDG m

**GISCO & ESS/UN-GGIM: Europe 30-31 March 2017
in Luxembourg**



UN-GGIM: EUROPE

UNITED NATIONS INITIATIVE ON
GLOBAL GEOSPATIAL
INFORMATION MANAGEMENT



The main drivers for this work group...

SUSTAINABLE DEVELOPMENT GOALS



UN SDGs

Data Integration

Statistical
Geospatial
Framework
(SGF)

Accessible
& Usable

Interoperable
data & metadata

Common geographic boundaries
for dissemination

Geocoded unit record data
in a data management environment

Use of authoritative geospatial infrastructure and geocoding



UN-GGIM: EUROPE

UNITED NATIONS INITIATIVE ON
GLOBAL GEOSPATIAL
INFORMATION MANAGEMENT



The main outcome and findings...



Kick off, November 2014



1st WG B Meeting, May 2015

Deliverable B1



Data Integration –
Definition of priority user
needs for combinations of
data

UN-GGIM: Europe, Work Group B, First delivery

Version 1.1
2015-10-23



UN-GGIM: EUROPE
UNITED NATIONS INITIATIVE ON
GLOBAL GEOSPATIAL
INFORMATION MANAGEMENT



The main outcome and findings...



4th WG B Meeting, November 2015



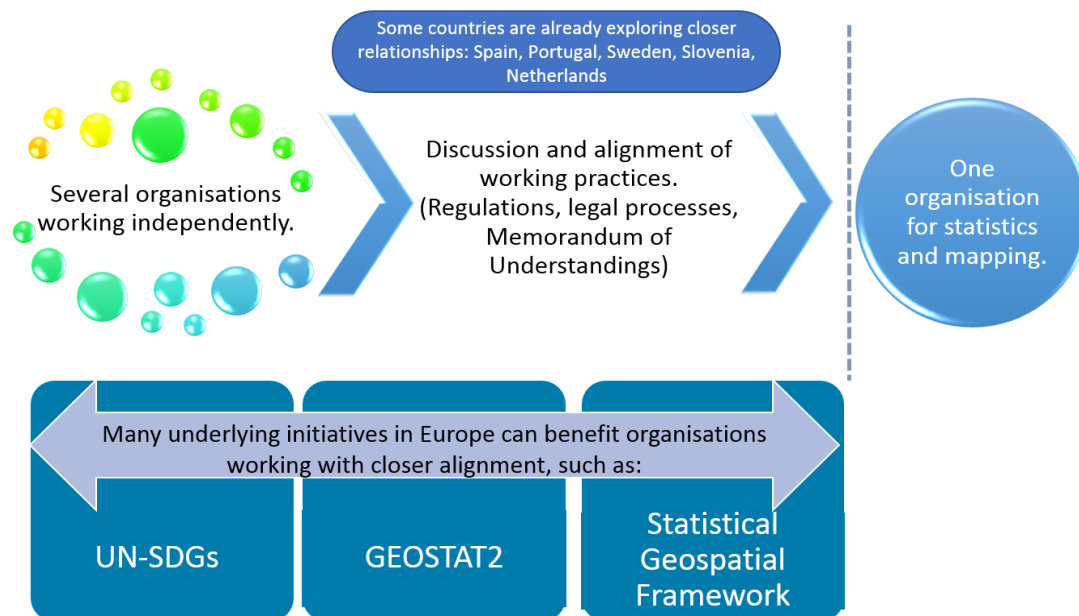
5th WG B Meeting, May 2016

Deliverables B3, B2.1 & B2.2/2.3...




The main outcome and findings...

Deliverable B2.2/2.3



The channel to publish the outcome...


UN-GGIM: EUROPE United Nations Initiative on Global Geospatial Information Management

ABOUT UN-GGIM: EUROPE

ARTICLES AND RULES

EXECUTIVE COMMITTEE

EUROPEAN UN MEMBER STATES

NMCAs AND NSIs IN EUROPEAN UN MEMBER STATES


OBSERVER ORGANISATIONS

WG A Core Data

WG B Data Integration

OUR SOCIAL NETWORKS

WG B Data Integration



Chair: Hansjörg Kutterer, Germany

Point of Contact: Pier-Giorgio.Zaccheddu – Pier-Giorgio.Zaccheddu (at) bkg.bund.de

UN-GGIM: Europe Deliverable Sub-Working Group B1 – “Data Integration – Definition of priority user needs for combinations of data”

 UN-GGIM: Europe Deliverable Sub-Working Group B1 – Annex II to Report SWG B1 on Priority User Needs ver 1.1

 UN-GGIM: Europe Deliverable Sub-Working Group B.2.1 – “The methods of implementing the prioritised combinations of data: Review of current European Interoperability Frameworks and geospatial and statistical integration projects regarding methods of combinations of data”

 UN-GGIM: Europe Deliverable Sub-Working Group B2.2/2.3 – “The methods of implementing the prioritised combinations of data: Provide best practice guidance to the interactions between NMCAs/NSIs /Environmental Agencies and other relevant organisations. Review current use of data from multiple sources to identify case studies and best practices relevant for combinations with core data.”

 UN-GGIM: Europe Deliverable Sub-Working Group B3 – “Report of the Work Group Data Integration about how to manage side-effects induced by data combinations” Ver1.0

LATEST NEWS:

UN Member States participate in 3rd Plenary of UN-GGIM: Europe

 UN-GGIM: Europe announces creation of GRF-Europe

 UN-GGIM: Europe findings contribute to work on global fundamental data themes


 Executive Committee meets in Frankfurt

 UN-GGIM: Europe at GWF16 in Rotterdam

KNOWLEDGE BASE


MEETINGS


FORTHCOMING EVENTS



 Future trends in geospatial information management: the five to ten year vision

LINKS

REPORTS

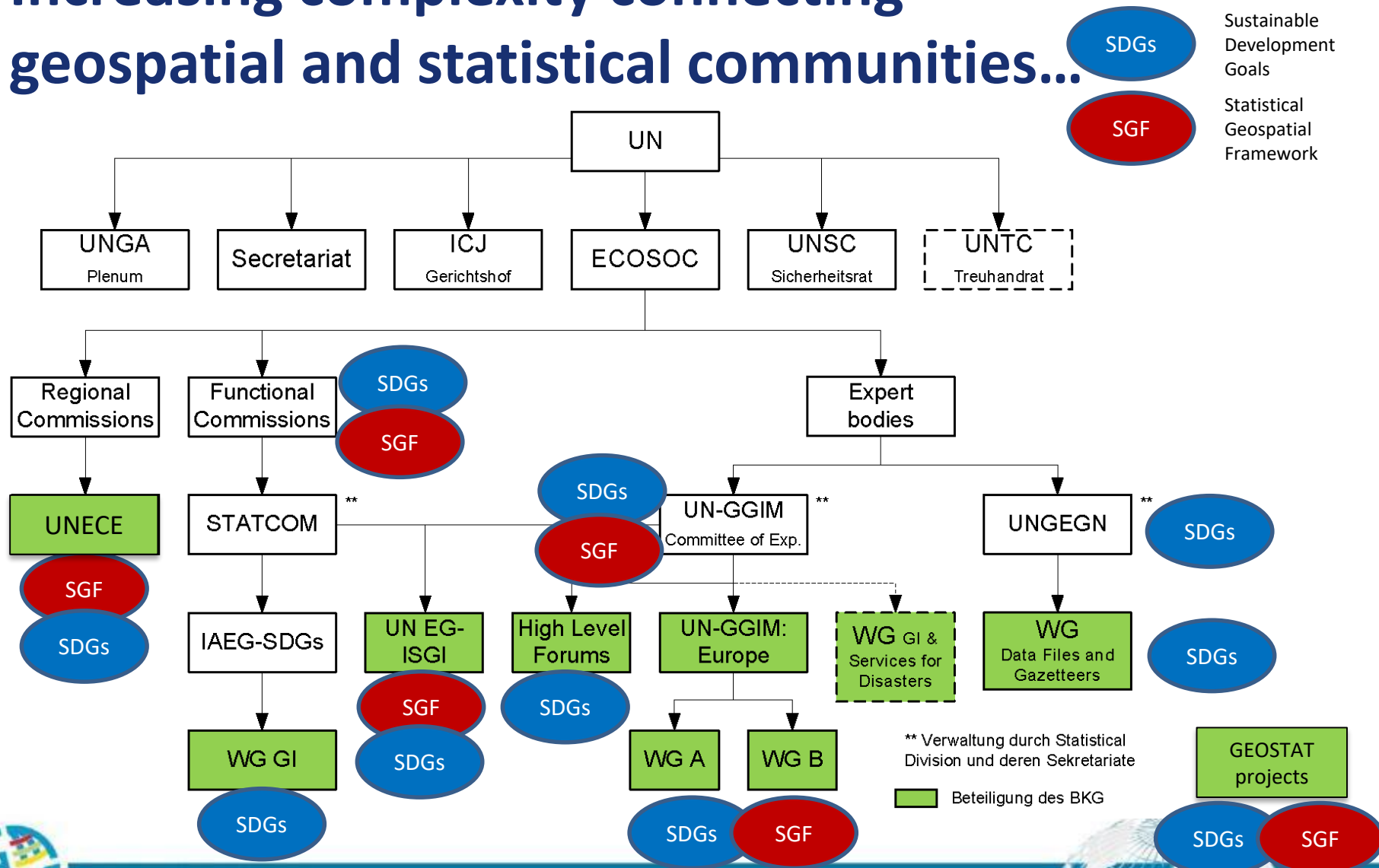

 Coming to @UNStats #48 #meeting? Join us @ #geospatial #statistics #integration #forum on Monday 6 March: <https://t.co/Wx4UUVIYQY> — 6 days 13 hours


 Want to know how #geospatial #LAM relevant to #UNGGIM? Read up background note on upcoming #EG #LAM #meeting: <https://t.co/vRethMNYbD> ... — 6 days 13 hours


 Be reminded of upcoming #UNGGIM #LAM #geospatial meeting in March 2017 – #agenda now available: <https://t.co/TYL70qk2Ei> — 6 days 13 hours



Increasing complexity connecting geospatial and statistical communities...



SDGs Sustainable Development Goals

SGF Statistical Geospatial Framework



UN-GGIM: Europe – Work Plan 2017 - 2020

1) **Supportive tasks:** As a European contribution to the global process on developing a framework for monitoring UN SDG indicators, UN-GGIM: Europe will through the Working Group on Data Integration, ensure a two-way interaction with the IAEG-SDG Working Group on Geospatial Information.

- ★ develop **geospatial methodologies and approaches** on monitoring, based on the specifications on indicators from there IAEG-SDG WG, making these available to the European authorities.

2) **Specific tasks: In addition**

- ★ Develop **practical examples (best practice)** on specific national implementations on how Geospatial Information can support in processes in achieving the SDGs and where the need shows to measure, monitor and mitigate challenges;
- ★ Suggest **links between communities:** demographic, statistical and environmental data together with the Geospatial Location – ranging from the conceptual level to specific indicators.



Supportive tasks for the UN-GGIM:Europe WG Data Integration

Inter-Agency and Expert Group on Sustainable Development Goal Indicators (IAEG SDGs)

- provide a proposal of a global indicator framework (and associated global and universal indicators)

IAEG SDGs Working Group on „Geographic Information“ (IAEG SDG WG GI)

- advance the understanding and the role of geospatial information in contributing to the indicator framework

UN-GGIM:Europe Work Group „Data Integration“

- Contribute to the global process and ensure a two-way-interaction with the IAEG SDG WG GI



16 Selected Indicators (Mexico City, 12-14.12.2016)

		Group 1	Group 2	Group 3	Tier
1.2.1	Poverty	x			I
1.4.1	Poverty			x	III
2.4.1	Food	x		x	III
3.c.1	Health	x			I
4.6.1	Education	x			II
6.1.1	Water	x			I
6.3.2	Water		x	x	III
6.6.1	Water	x	x	x	III
9.1.1	Transportation	x	x	x	III
11.3.1	Cities	x			II
11.6.2	Cities	x			I
11.7.1	Cities	x			III
14.1.1	Marine		x	x	III
14.2.1	Marine		x		III
15.1.1	Ecosystems	x			I
15.3.1	Ecosystems	x	x	x	III

→ Item 9
Presented by
Olav Eggers

Task
Task

Task



Cross-cutting issues

- ★ Task on disaggregation, including urban/rural.
- ★ Task on alternative data sources, including crowd sourced data and VGI.
- ★ Task on national versus global data.

→ Item 9
Presented by
Olav Eggers

→ Summary reports available since Jan 2017

+++ 6 Task Team reports to be elaborated until 17 Feb 2017 +++

Only few reports ready (first drafts) in March 2017!

Input to IAEG SDG Meeting on 30-31 March 2017 still due...



Global, regional, local...



Discussion of material at the WG kick-off on 28.02 - 01.03.2017

(1) Evaluate and update Deliverables B1, B2 or B3 focusing SDG indicator framework?

- ★ Evaluate recommendations on methods/interaction B2.2/B2.3, maybe including findings from B1, B2.1 and B3

(2) Evaluation of the national SDG monitoring structures?

(3) Focusing indicators or cross-cutting issues – based on results of IAEG SDG WG GI?

- ★ Focus on global indicators? On different cross-cutting issues? Refer to different Tier classes?
- ★ Focus on EU indicators?
- ★ Contribute to GEOSTAT-3 items?

(4) Evaluate and contribute to activities from other communities/actors like GEO, ESRI, UNECE,...?



In summary – WG tasks approved by the ExCom

#	task	request	date
1	<p>Draft ideas for a resolution to be prepared for UN-GGIM-7 (and formally proposed for UN-GGIM-8) on data integration topics</p> <p>Make use of the findings/recommendations of the deliverables B.1, B.2.1, B.2.2/2.3 and B.3.1.</p> <p>Proposal: methods/interaction → B2.2/B2.3?</p>	ExCom	2018
2	<p>Select 1-3 new global, regional or national indicators (e.g. focusing on “accessibility”) reflecting the European perspective (INSPIRE, Copernicus,...) reflecting “data integration” aspects and cross-cutting issues</p>	WP	2018



WG B subgroups for tasks 2017-2020*

Subgroup 1

Subgroup “Draft ideas for a resolution to be prepared for UN-GGIM on data integration topics”

Lead: Eurostat, Contact point: [Ekkehard Petri](#), Eurostat

Country representation: NSI Sweden (SE), NMCA Austria (AT), NSI Serbia (RS), NMCA Netherlands (NL), NMCA and NSI Germany (DE), NSI Turkey (TR), NSI Poland (PL)

Subgroup 2

Subgroup “Selection of 1-3 new global, regional or national indicators reflecting the European perspective”

Lead: Portugal (PT), Contact point: [Francisco Vala](#), Statistics Portugal

Country representation: NMCA Finland (FI), NSI Austria (AT), European Commission, NSI Switzerland (CH), NMCA Sweden (SE), NMCA Denmark (DK), e-GEOS Italy (IT), NMCA Spain (ES), EEA, NMCA Germany (DE)

* All WG B member countries not yet listed (e.g. United Kingdom – UK, Norway - NO, Greece - GR) and countries which are not yet listed as members are requested to contact the chair for nominations



Thank you very much for your attention!



insidecounsil.com



honqiat.com

Chair: Prof. Hansjörg Kutterer

Contact: UN-GGIM: Europe, WG B „Data Integration“:

Pier-Giorgio Zaccheddu, „Technical Leader“

E-Mail: pier-giorgio.zaccheddu@bkg.bund.de



UN-GGIM: EUROPE

UNITED NATIONS INITIATIVE ON
GLOBAL GEOSPATIAL
INFORMATION MANAGEMENT

