

# 4<sup>th</sup> Plenary of UN-GGIM: Europe

Session 4: Bringing geospatial and statistics together

**Work Group Data Integration – findings for data integration and its contribution to the spatial dimension in the SDG monitoring**



**UN-GGIM: EUROPE**

UNITED NATIONS INITIATIVE ON  
GLOBAL GEOSPATIAL  
INFORMATION MANAGEMENT



# The main drivers for this work group...

SUSTAINABLE DEVELOPMENT GOALS



UN SDGs

Data Integration

Statistical  
Geospatial  
Framework  
(SGF)

Accessible  
& Usable

Interoperable  
data & metadata

Common geographic boundaries  
for dissemination

Geocoded unit record data  
in a data management environment

Use of authoritative geospatial infrastructure and geocoding



UN-GGIM: EUROPE

UNITED NATIONS INITIATIVE ON  
GLOBAL GEOSPATIAL  
INFORMATION MANAGEMENT



# The main outcome and findings...



Kick off, November 2014



1st WG B Meeting, May 2015

## Deliverable B1



Data Integration –  
Definition of priority user  
needs for combinations of  
data

UN-GGIM: Europe, Work Group B, First delivery

Version 1.1  
2015-10-23



**UN-GGIM: EUROPE**  
UNITED NATIONS INITIATIVE ON  
GLOBAL GEOSPATIAL  
INFORMATION MANAGEMENT





# The main outcome and findings...



4th WG B Meeting, November 2015



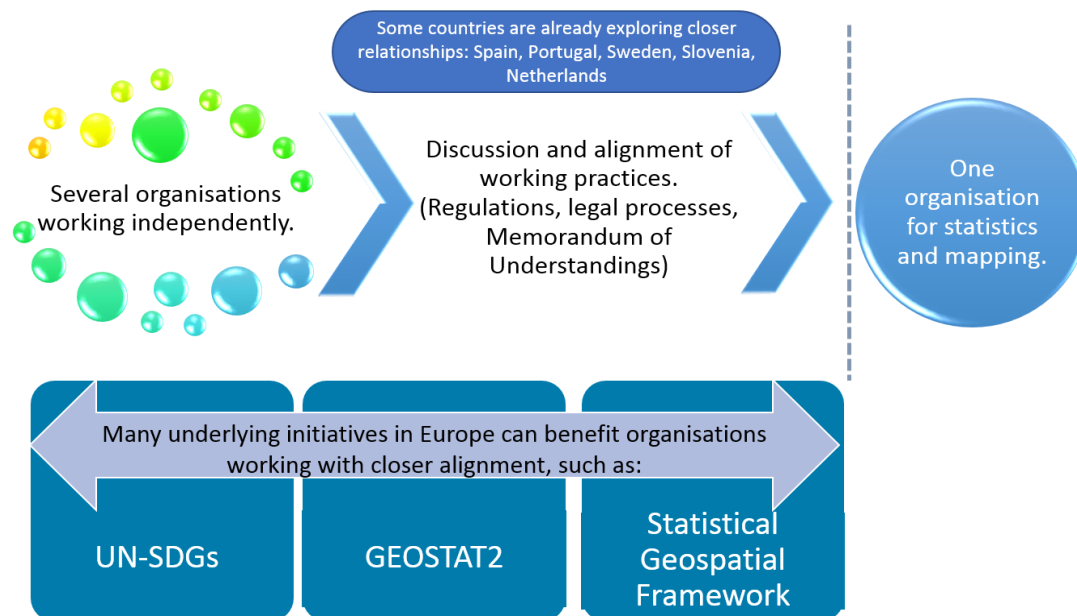
5th WG B Meeting, May 2016

## Deliverables B3, B2.1 & B2.2/2.3...




# The main outcome and findings...

## Deliverable B2.2/2.3





# The channel to publish the outcome...


**UN-GGIM: EUROPE** United Nations Initiative on Global Geospatial Information Management

ABOUT UN-GGIM: EUROPE

ARTICLES AND RULES

EXECUTIVE COMMITTEE

EUROPEAN UN MEMBER STATES

NMCAs AND NSIs IN EUROPEAN UN MEMBER STATES


OBSERVER ORGANISATIONS

WG A Core Data

WG B Data Integration

OUR SOCIAL NETWORKS

WG B Data Integration



Chair: Hansjörg Kutterer, Germany

Point of Contact: Pier-Giorgio.Zaccheddu – Pier-Giorgio.Zaccheddu (at) bkg.bund.de

UN-GGIM: Europe Deliverable Sub-Working Group B1 – “Data Integration – Definition of priority user needs for combinations of data”

UN-GGIM: Europe Deliverable Sub-Working Group B1 – Annex II to Report SWG B1 on Priority User Needs ver 1.1

UN-GGIM: Europe Deliverable Sub-Working Group B.2.1 – “The methods of implementing the prioritised combinations of data: Review of current European Interoperability Frameworks and geospatial and statistical integration projects regarding methods of combinations of data”

UN-GGIM: Europe Deliverable Sub-Working Group B2.2/2.3 – “The methods of implementing the prioritised combinations of data: Provide best practice guidance to the interactions between NMCAs/NSIs /Environmental Agencies and other relevant organisations. Review current use of data from multiple sources to identify case studies and best practices relevant for combinations with core data.”

UN-GGIM: Europe Deliverable Sub-Working Group B3 – “Report of the Work Group Data Integration about how to manage side-effects induced by data combinations” Ver1.0

LATEST NEWS:

UN Member States participate in 3rd Plenary of UN-GGIM: Europe

UN-GGIM: Europe announces creation of GRF-Europe

UN-GGIM: Europe findings contribute to work on global fundamental data themes


Executive Committee meets in Frankfurt

UN-GGIM: Europe at GWF16 in Rotterdam

KNOWLEDGE BASE

MEETINGS


FORTHCOMING EVENTS


**UN-GGIM**  
UNITED NATIONS INITIATIVE ON  
GLOBAL GEOSPATIAL  
INFORMATION MANAGEMENT


Future trends in geospatial information management: the five to ten year vision

LINKS


REPORTS



Coming to @UNStats #48 #meeting? Join us @ #geospatial #statistics #integration #forum on Monday 6 March: <https://t.co/Wx4UUVIqY> — 6 days 13 hours



Want to know how #geospatial #LAM relevant to #UNGGIM? Read up background note on upcoming #EG #LAM #meeting: <https://t.co/vRethMNYbD> ... — 6 days 13 hours

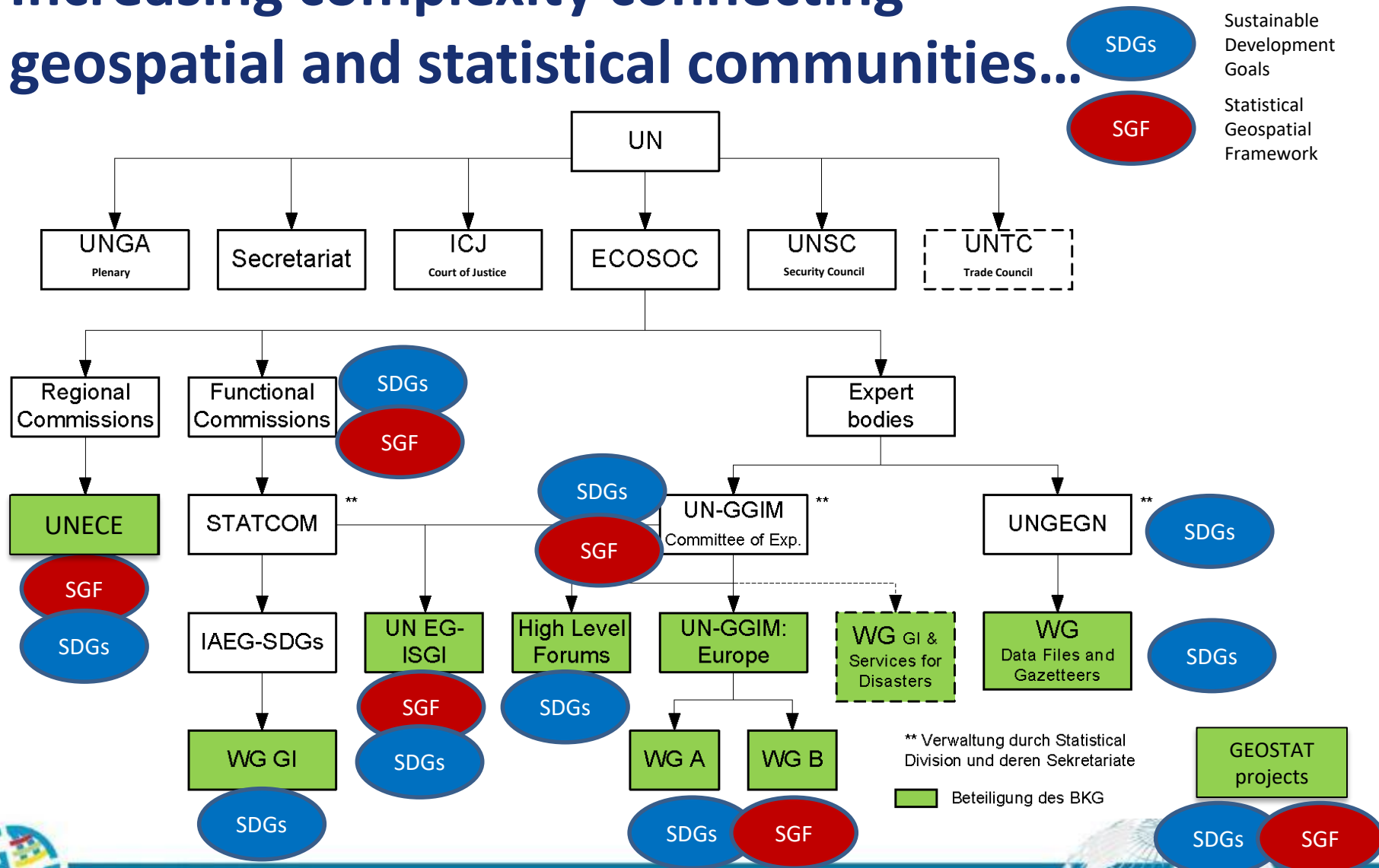


Be reminded of upcoming #UNGGIM #LAM #geospatial meeting in March 2017 – #agenda now available: <https://t.co/TYL70qk2Ei> — 6 days 13 hours

more

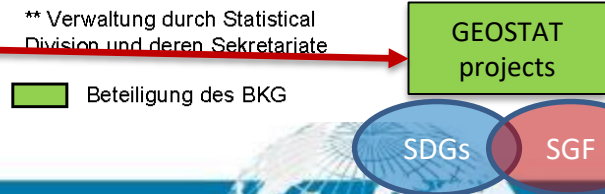


# Increasing complexity connecting geospatial and statistical communities...



SDGs Sustainable Development Goals

SGF Statistical Geospatial Framework





# UN-GGIM: Europe – Work Plan 2017 - 2020

**1) Supportive tasks:** As a European contribution to the global process on developing a framework for monitoring UN SDG indicators, UN-GGIM: Europe will through the Working Group on Data Integration, ensure a two-way interaction with the IAEG-SDG Working Group on Geospatial Information.

- ★ develop **geospatial methodologies and approaches** on monitoring, based on the specifications on indicators from the IAEG-SDG WG, making these available to the European authorities.

**2) Specific tasks: In addition**

- ★ Develop **practical examples (best practice)** on specific national implementations on how Geospatial Information can support in processes in achieving the SDGs and where the need shows to measure, monitor and mitigate challenges;
- ★ Suggest **links between communities:** demographic, statistical and environmental data together with the Geospatial Location – ranging from the conceptual level to specific indicators.



# Supportive tasks for the UN-GGIM:Europe WG Data Integration

Inter-Agency and Expert Group on Sustainable Development Goal Indicators (IAEG SDGs)

- provide a proposal of a global indicator framework (and associated global and universal indicators)

IAEG SDGs Working Group on „Geographic Information“ (IAEG SDG WG GI)

- advance the understanding and the role of geospatial information in contributing to the indicator framework

UN-GGIM:Europe Work Group „Data Integration“

- Contribute to the global process and ensure a two-way-interaction with the IAEG SDG WG GI

global

regional



# Selected Indicators (after Mexico City, 12-14.12.2016)

The IAEG SDG WG GI has selected a list of 15 indicators (4 tier I, 4 tier II, 7 tier III):

Cross-cutting issues:

- Task on **disaggregation**, including urban/rural.
- Task on **alternative data sources**, including crowd sourced data and VGI.
- Task on **national vs. global data**.

| Goal   | Indicator  | Tier | #  |
|--|--|------|----|
| ...indicators for which geospatial information has a direct contribution   |  |      |    |
| Goal-2   End hunger, achieve food security and improved nutrition and promote sustainable agriculture  | 2.4.1   Proportion of agricultural area under productive and sustainable agriculture   | III  | 1  |
| Goal-6   Ensure availability and sustainable management of water and sanitation for all  | 6.3.2   Proportion of bodies of water with good ambient water quality  | III  | 2  |
|  | 6.5.2   Proportion of transboundary basin area with an operational arrangement for water cooperation                                       | II   | 3  |
| Goal-9   Build resilient infrastructure, promote inclusive and sustainable industrialization and foster innovation   | 6.6.1   Change in the extent of water-related ecosystems over time   | III  | 4  |
|  | 9.1.1   Proportion of the rural population who live within 2 km of an all-season road  | III  | 5  |
|  | 9.c.1   Proportion of population covered by a mobile network, by technology  | I    | 6  |
| Goal-11   Make cities and human settlements inclusive, safe, resilient and sustainable   | 11.2.1   Proportion of population that has convenient access to public transport, by sex, age and persons with disabilities                | II   | 7  |
|  | 11.3.1   Ratio of land consumption rate to population growth rate  | II   | 8  |
|  | 11.7.1   Average share of the built-up area of cities that is open space for public use for all, by sex, age and persons with disabilities | III  | 9  |
| Goal-14   Conserve and sustainably use the oceans, seas and marine resources for sustainable development   | 14.2.1   Proportion of national exclusive economic zones managed using ecosystem-based approaches  | III  | 10 |
| Goal-15   Protect, restore and promote sustainable use of terrestrial ecosystems, sustainably manage forests, combat desertification, and halt and reverse land degradation and halt biodiversity loss | 14.5.1   Coverage of protected areas in relation to marine areas   | I    | 11 |
|  | 15.1.1   Forest area as a proportion of total land area  | I    | 12 |
|  | 15.1.2   Proportion of important sites for terrestrial and freshwater biodiversity that are covered by protected areas, by ecosystem type  | I    | 13 |
|  | 15.3.1   Proportion of land that is degraded over total land area  | III  | 14 |
|  | 15.4.1   Coverage by protected areas of important sites for mountain biodiversity  | II   | 15 |



→ Input to IAEG SDG Meeting on 30-31 March 2017





# Discussion of material within the Work Group

## Global, regional, local...



Deutsche  
Nachhaltigkeitsstrategie

Neuaufgabe 2016



UN-GGIM: EUROPE

UNITED NATIONS INITIATIVE ON  
GLOBAL GEOSPATIAL  
INFORMATION MANAGEMENT



# In summary – WG tasks approved by the ExCom

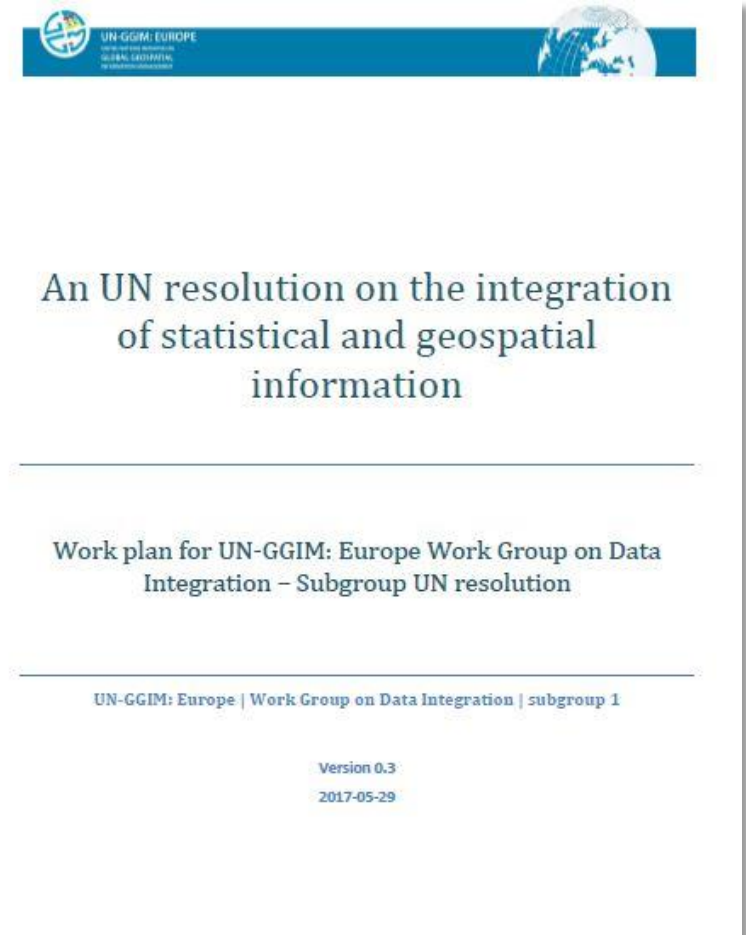
| # | task  | request | date |
|---|---|---------|------|
| 1 | Draft ideas for a resolution to be prepared for UN-GGIM-7 (and formally proposed for UN-GGIM-8) on data integration topics<br>Make use of the findings/recommendations of the deliverables B.1, B.2.1, B.2.2/2.3 and B.3.1.<br>Proposal: methods/interaction → B2.2/B2.3? | ExCom   | 2018 |
| 2 | Select 1-3 new global, regional or national indicators (e.g. focusing on “accessibility”) reflecting the European perspective (INSPIRE, Copernicus,...) reflecting “data integration” aspects and cross-cutting issues  | WP      | 2018 |
|   |   |         |      |



# Draft Scoping Papers submitted to the Plenary

## Task 1 / subgroup 1:

- work plan for a process aiming at drafting a resolution on the integration of statistical and geospatial information
- background document for the **Panel Session**

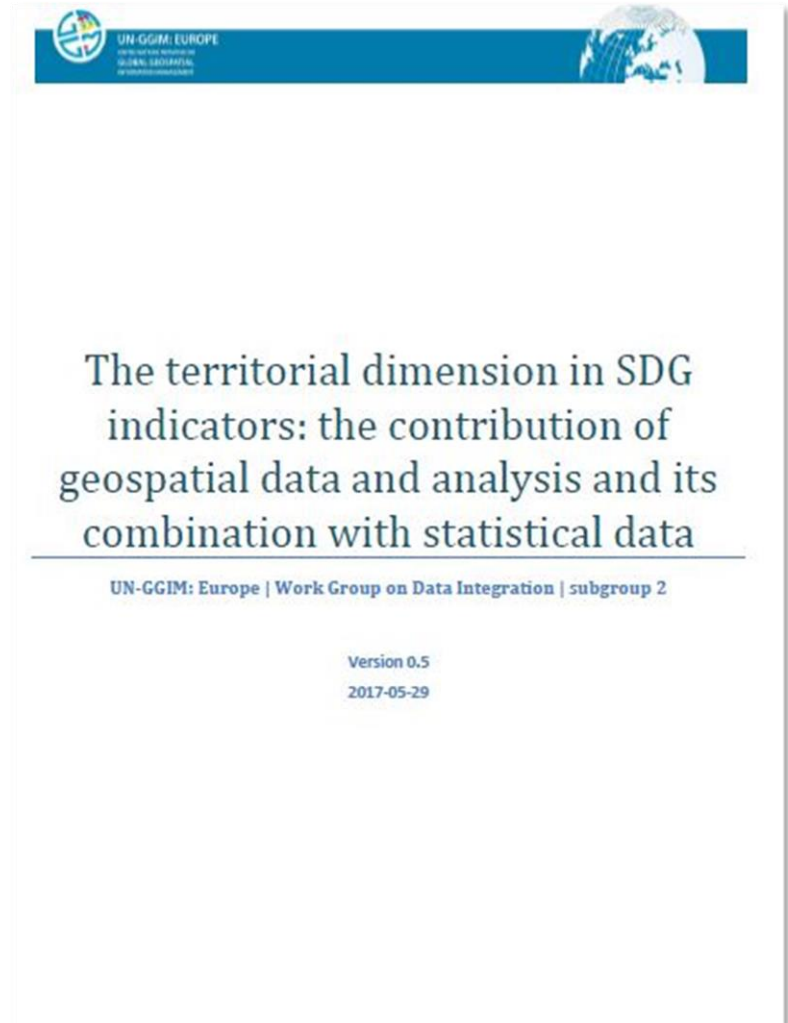




# Draft Scoping Papers submitted to the Plenary

## Task 2 / subgroup 2

- Work plan with the aim to set up a line of work addressing specific SDG indicators and targets by taking into account the specificities of the European context
- Reflecting the activities of the IAEG-SDG WG GI and the experiences of European and national initiatives addressing the SDGs



# Work phases and actions for Task 2

- Phase 1 | Organise the work scope by defining the main activities [...] **until 31 May 2017 → accomplished**
- Phase 2 | Select specific indicators for which the integration between geospatial information and statistical data is relevant for SDG monitoring on a territorial perspective including spatial disaggregation **until 31 December 2017**
- Phase 3 | Definition of an evaluation system to analyse the indicators at a national (and if possible on a sub-national), regional/European and at the global level [...] **until 31 March 2018**
- Phase 4 | Identification of best practices both at the European and national levels [...] **until 15 November 2018.**



# UN-GGIM: Europe @ IAEG SDGs WG GI

(Status from 8-10 May 2017, Kunming, China)

- Provide input to the task on “disaggregation” → **ongoing**
- Make available the survey and evaluation by the Work Group on Core Data based on *use cases* for the SDG monitoring → **asap**
- Make available the first findings of the Work Group Data Integration (subgroup 2) *selecting 1-3 indicators* and evaluating which data can be used different levels → **Oct/Nov 2017**
  - ★ Very likely 11.3.1 should be selected as indicator for subgroup 2, a data platform and analysis made by EC (JRC, Eurostat) already exist
- Contribute (including members of the Work Group on Data Integration) to ‘*best practice examples*’ on the specific indicators with the aim to provide input to the next IAEG SDG in October 2017 → **31.08.2018 (first draft)**





# Thank you very much for your attention!



insidecounsel.com



honqiat.com

**Chair: Prof. Hansjörg Kutterer**

**Contact: UN-GGIM: Europe, WG B „Data Integration“:**

**Pier-Giorgio Zaccheddu, „Technical Leader“**

**E-Mail: [pier-giorgio.zaccheddu@bkg.bund.de](mailto:pier-giorgio.zaccheddu@bkg.bund.de)**



**UN-GGIM: EUROPE**

UNITED NATIONS INITIATIVE ON  
GLOBAL GEOSPATIAL  
INFORMATION MANAGEMENT

