

Fifth Plenary Meeting of the European Region of the United Nations Committee of Experts on Global Geospatial Information Management (UN-GGIM: Europe)

Brussels, Belgium, 7th June 2018



ITALIAN CADASTRAL SYSTEM

*Innovative ways in the management and use of the
Italian Cadastral Cartography*

Eng. Franco MAGGIO

Central Director

for Cadastral, Cartographic and Land Registration Services

ITALIAN CADASTRAL SYSTEM

*Innovative ways in the management and use of the Italian
Cadastral Cartography*

Agenda

1

Structure and Contents of the
Italian Cadastral System



2

The Italian Cadastral Cartography



3

Interoperability services
concerning Cadastral Cartography



ITALIAN CADASTRAL SYSTEM

*Innovative ways in the management and use of the Italian
Cadastral Cartography*

Agenda

1

**Structure and Contents of the
Italian Cadastral System**



2

The Italian Cadastral Cartography



3

**Interoperability services
concerning Cadastral Cartography**



1. Structure and Contents of the Italian Cadastral System

REAL ESTATE INFORMATION SYSTEM

CADASTRE AND CARTOGRAPHY

CARTOGRAPHY

LAND
CADASTRE

BUILDINGS
CADASTRE



It shows the technical characteristics of the objects and the holders of real estate rights (not for legal evidence).

It gives the land and R.E. units values used for taxation purposes

LAND REGISTRIES

(real estate rights and mortgages)



By registering real estate deeds, it manages the information about the transfer of real estate rights and about the mortgage enrolments

REAL ESTATE MARKET MONITORING SYSTEM



It collects and processes information from real estate market and continuously shows the real estate values trend

1. Structure and Contents of the Italian Cadastral System

- The **Italian Cadastral System**, managed by the “*Agenzia delle Entrate*”, is the inventory of all the **Real Estate Properties** (both public and private) in the national territory

Main functions of the Italian Cadastral System

Support to Civil and Administrative Functions:

- to register and update real estate properties, legally identifying them

Fiscal function:

- to assign an economic value to the real estate properties

- The cadastral system guarantees the **historical traceability of any data change** related both to the rural parcels and urban units, since their first cadastral registration

1. Structure and Contents of the Italian Cadastral System

ORIGIN OF THE ITALIAN CADASTRAL SYSTEM

The ITALIAN CADASTRE was implemented through the subsequent establishment of two distinct archives:

the first



Land Cadastre

comprising the list of all rural properties and unbuilt land plots

the second



**Urban Building
Cadastre**

including buildings for civil, industrial and commercial use

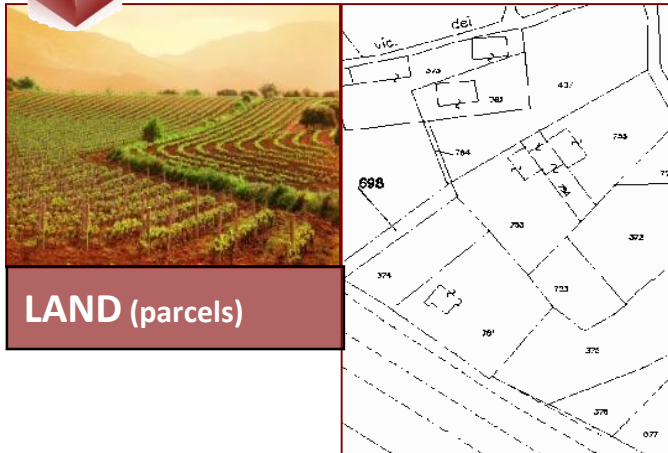
in order to:

- survey and register real properties and track their changes;
- prepare the ground for a fair real estate taxation.

1. Structure and Contents of the Italian Cadastral System



LAND CADASTRE



LAND (parcels)

Cadastral assessment

**Inventory basic element:
the cadastral parcel**

Landowner income

Farmer income

Continuous portion of land, located in a single municipality, having the same crop quality and productivity level, or use, under homogeneous property rights and held in one ownership

*about **85.5** millions of cadastral parcels,
60 millions with assigned cadastral income values*

URBAN BUILDING CADASTRE



BUILDINGS (urban real estate units)

Cadastral assessment

Cadastral income

**Inventory basic element:
the urban real estate unit**

Part of a building, a whole building or groups of buildings, or an urban area, fit for having a functional and income autonomy

*about **73.5** millions of buildings or parts of
them, 63.5 millions with assigned
cadastral income values*

1. Structure and Contents of the Italian Cadastral System



LAND CADASTRE

URBAN BUILDING CADASTRE



CENSUS ARCHIVE



includes **technical and descriptive data** related to the **rural parcels**

CENSUS ARCHIVE



includes **technical and descriptive data** related to the **real estate urban units**

CARTOGRAPHIC ARCHIVE



VECTOR

includes about **300,000 maps** in vector format

(344,000 cartographic files)

PLANS ARCHIVE



includes graphic information (**plans**) related to each real estate urban unit



1. Structure and Contents of the Italian Cadastral System

Knowledge of the objects: technical and graphical description

Information geo-referenced on a large scale map

URBAN BUILDING CADASTRE

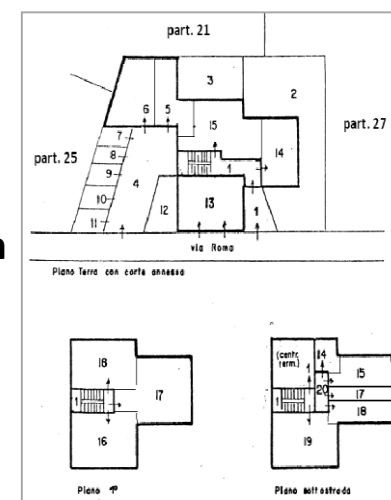


Buildings partition into independent real estate units

List of the units and
related general
information

N.	Foglio	Particella	Sub	Categoria	Classe	Consistenza
1	60	214	1	A/3	3	6 vani
2	60	214	505	A/3	3	4 vani
3	60	214	3	A/3	3	0,5 vani
4	60	214	4	A/3	3	7 vani
5	60	214	5	A/3	3	0,5 vani
6	60	214	6	A/3	3	5 vani
7	60	214	7	A/3	3	0,5 vani
8	60	214	8	A/3	3	0,5 vani
9	60	214	9	A/3	3	35 vani
10	60	214	10	A/3	3	0,5 vani
11	60	214	11	A/3	3	7 vani
12	60	214	12	A/3	3	0,5 vani
13	60	214	13	A/3	3	5 vani
14	60	214	14	A/3	3	0,5 vani
15	60	214	15	A/3	3	0,5 vani
16	60	214	16	A/3	3	35 vani
17	60	214	17	A/3	3	0,5 vani
18	60	214	18	A/3	3	7 vani
19	60	214	19	A/3	3	0,5 vani
20	60	214	20	A/3	3	5 vani
21	60	214	21	A/3	3	0,5 vani
22	60	214	22	A/3	3	0,5 vani
23	60	214	23	A/3	3	35 vani
24	60	214	24	A/3	3	0,5 vani
25	60	214	25	A/3	3	7 vani
26	60	214	26	A/3	3	0,5 vani

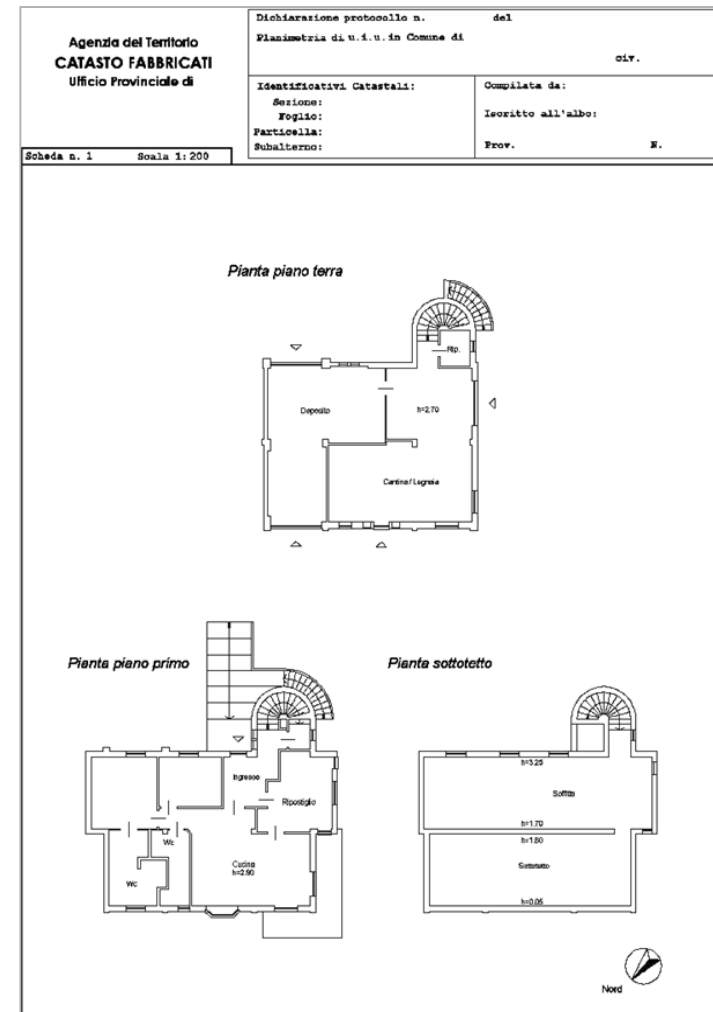
Graphical
representation



1. Structure and Contents of the Italian Cadastral System

Example of REAL ESTATE URBAN PLANS

- ✓ Cadastral identification code
- ✓ Address
- ✓ Typology (permitted use)
- ✓ Class (level) of productivity
- ✓ Size (number of rooms, area or volume)
- ✓ Cadastral income
- ✓ Floor level
- ✓ Other technical data (since 1985)
- ✓ Owner personal data
- ✓ Type of right and share



1. Structure and Contents of the Italian Cadastral System

THE UPDATING SYSTEM: involved players and related roles

According to Italian cadastral rules, **owners are obliged to declare** to the «Agenzia delle Entrate»:

- the **construction** of new Real Estate Urban units **and any change** subsequently brought to them
- **division of land parcels or constructions on them**

Due to the technical complexity of the information to be declared, the updating document can be submitted to the “*Agenzia delle Entrate*” only by private chartered surveyors, on behalf of the owners

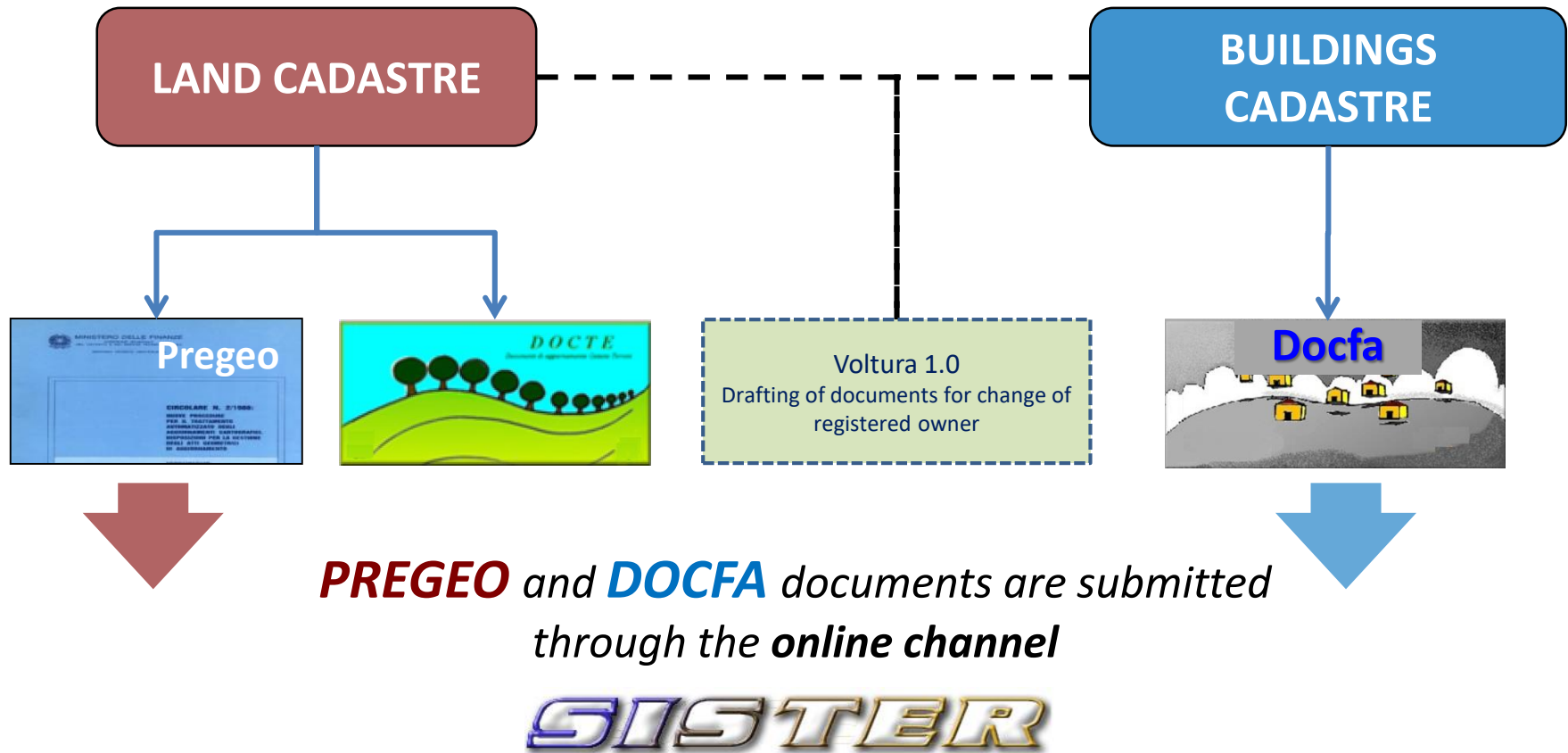
The landowners are also **obliged to declare crop changes** on their land parcels



1. Structure and Contents of the Italian Cadastral System

THE UPDATING SYSTEM: IT applications

Updating services: IT applications



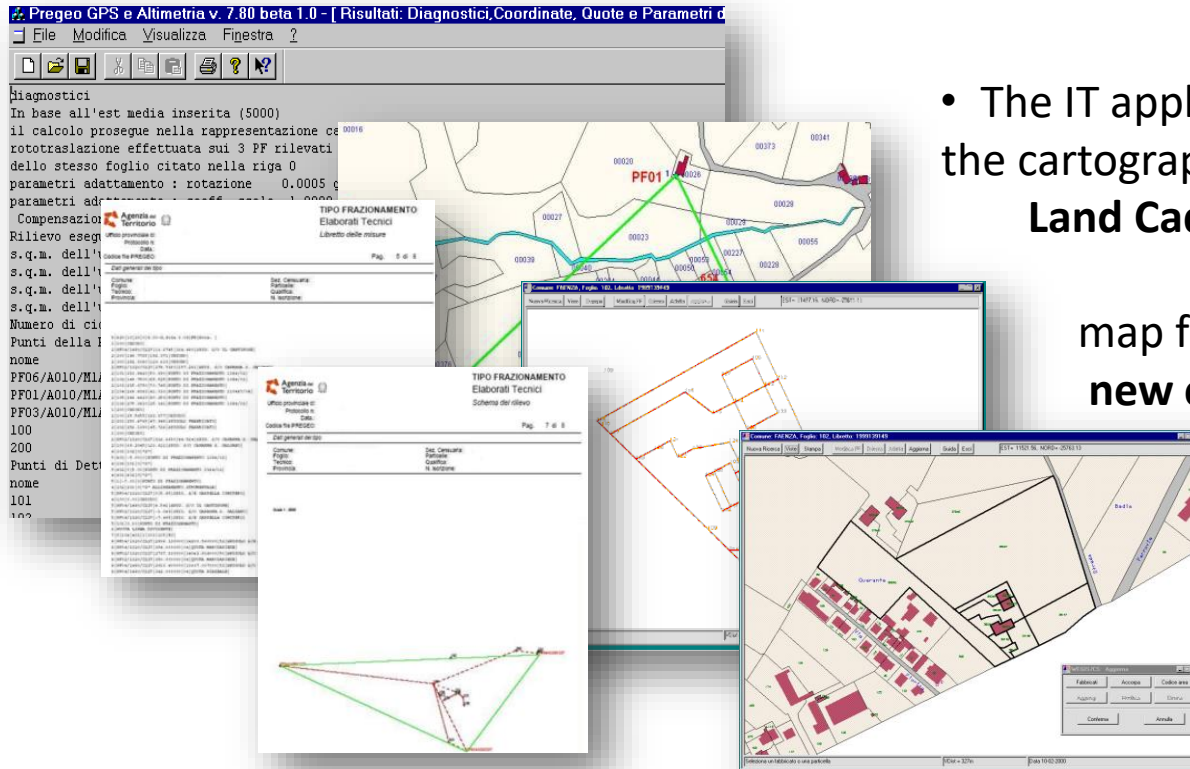
PREGEO and **DOCFA** documents are submitted
through the **online channel**

SISTER

*Since June 2015 the use of **online channel** is mandatory for the chartered surveyors*

1. Structure and Contents of the Italian Cadastral System

THE UPDATING SYSTEM - **PREGEO** is a software application for the updating of land cadastre



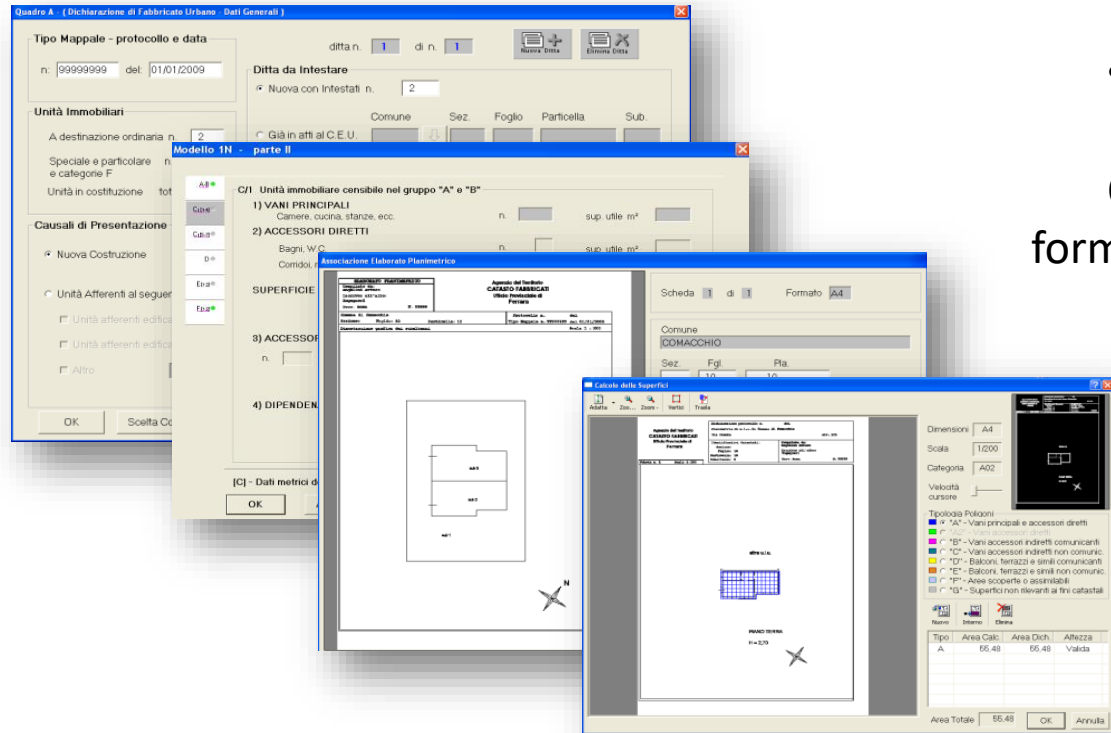
- The IT application **PREGEO** makes possible the cartographic and census updating of the **Land Cadastre** through the filling in and submission of **divisions** and map forms to introduce into the map **new constructions or enlargements**.

- The application manages **administrative, technical and geographic data**.

More than **0.4 million** documents registered each **YEAR**

1. Structure and Contents of the Italian Cadastral System

THE UPDATING SYSTEM - DOCFA is a software application for the updating of buildings cadastre



- The IT application **DOCFA** makes possible to fill in and submit to the Offices of *Agenzia delle Entrate* the form ***“Declaration of urban real estate property”***.

This form is meant to submit to Cadastre declarations of **new constructions and changes**.

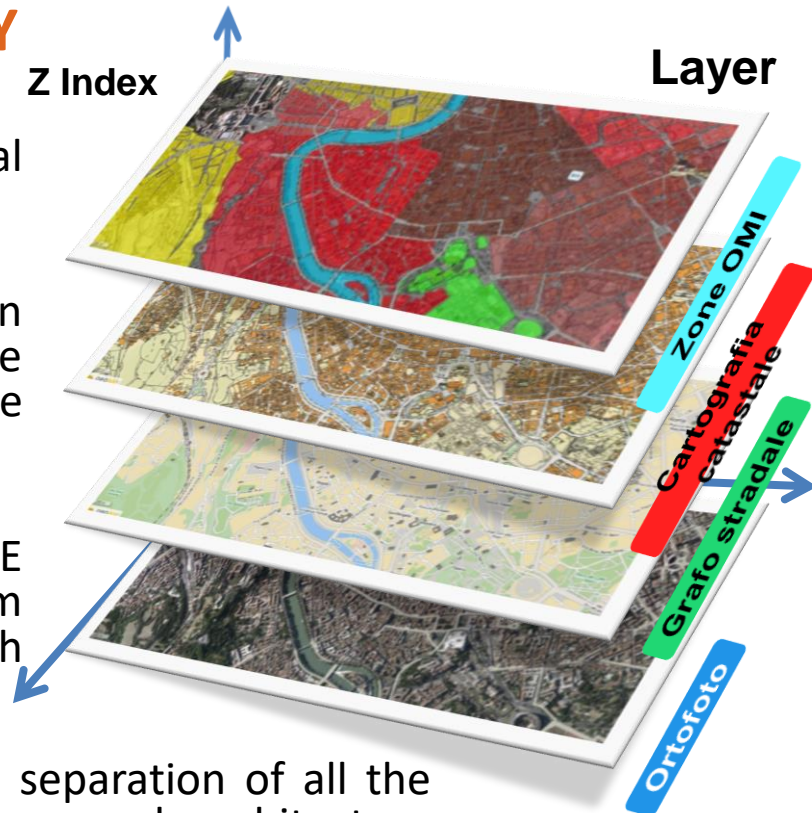
- The application manages **administrative, technical and graphic data**.

More than **1.4 million** urban units registered each **YEAR**

1. Structure and Contents of the Italian Cadastral System

SIT - INTEGRATED SYSTEM OF TERRITORY

- ✓ SIT is an evolution of the current cadastral cartographic system, a modern web GIS
- ✓ SIT is part of a wider project for the implementation of the **Integrated Real Estate Register (A.I.I.)**. The data managed historically in different systems are integrated in this system
- ✓ In the **Integrated Real Estate Register** the whole AdE information asset is unified into one national system whose elements are conveniently integrated each other
- ✓ SIT goes beyond the current system based on the separation of all the archives (Cartography, Census DBs, Plans) and on a web-architecture spread on 101 AdE Provincial Offices
- ✓ SIT allows the geo-based data surfing and search of all the information managed by the AdE, the spatial analysis and the integration with other data external to the cadastral domain



1. Structure and Contents of the Italian Cadastral System

SIT – SURFING AND SEARCH

https://sit.agenziaentrate.it/sit/nav

SIT - Navigazione

File Modifica Visualizza Preferiti Strumenti ?

RICERCA LOCALITÀ **RICERCA CATASTO** AMBITI IMPORTA RICERCA AVANZATA STORICO

ROMA (RM) ROMA VIA VIA VENTI SETTEMBRE VAI

List of buildings

Elenco Fabbricati

#	Toponimo	N. CIV.
1	VIA VENTI SETTEMBRE	A
2	VIA VENTI SETTEMBRE	A94
3	VIA VENTI SETTEMBRE	B
4	VIA VENTI SETTEMBRE	D
5	VIA VENTI SETTEMBRE	DA90
6	VIA VENTI SETTEMBRE	E
7	VIA VENTI SETTEMBRE	G
8	VIA VENTI SETTEMBRE	SC
9	VIA VENTI SETTEMBRE	SVC
10	VIA VENTI SETTEMBRE	1
11	VIA VENTI SETTEMBRE	3
12	VIA VENTI SETTEMBRE	5
13	VIA VENTI SETTEMBRE	6

Exact searching by address (e.g. Rome – Venti Settembre street)

WG584 ETRF2000 - Lat: 41.904308 Long: 12.508304

1. Structure and Contents of the Italian Cadastral System

SIT – SURFING AND SEARCH

The screenshot displays the SIT web application interface. At the top, there is a navigation bar with options like HOME, RICERCA LOCALITÀ, RICERCA CATASTO, and others. Below this, a map of Rome is shown with a red box highlighting a specific area. A pop-up window titled 'Risultato' shows a summary of the search results. Below the map, there is a table with columns for various cadastral data points. A red box highlights the 'UIU' (Urban Real Estate Units) tab and the table below it. The table contains detailed information for three units in Rome (RM), including their location, area, and value.

#	Comune	Codice Com.	Sezione	Sezione Urbana	Foglio	Mappale	Corpo di Fabb.	Sub	Zona Censuaria	Categoria	Classe	Consistenza	Rendita (€)	Tariffa (€)	Sup. DPR138	Indirizzo
1	ROMA (RM)	H501	-	-	485	156	3	3	1	A10	7	11 vani	14.373	1.306,64	295	PIAZZA DI S.APOLLINARE n. 33; piano:1-2
2	ROMA (RM)	H501	-	-	485	156	4	4	1	A10	7	10.5 vani	13.719,68	1.306,64	247	PIAZZA DI S.APOLLINARE n. 33; piano:3
3	ROMA (RM)	H501	-	-	485	156	505	502	1	A10	7	13 vani	16.986,27	1.306,64	305	PIAZZA DI S.APOLLINARE n. 33; piano:4-5-6

DETAILED DATA ON THE REAL ESTATE URBAN UNITS INCLUDED IN EACH BUILDING

1. Structure and Contents of the Italian Cadastral System

EXTERNAL DATA INTEGRATED IN THE " SIT "

The screenshot displays the Italian Cadastral System (SIT) interface. The top navigation bar includes links for Ricerca Località, Ricerca Catasto, Ambiti, Importa, Ricerca Avanzata, and Storico. The main interface is divided into three main sections:

- Mappe:** A satellite map view of a city area, with a red dashed box highlighting a specific location. Below the map is a street view image of Piazza di Tor Sanguigna in Rome.
- Risultato:** A table showing the results of a search. The table has columns for Catasto, Comune, Cod. Com., Sez. Urb., Foglio Mappale, Destinazione, Sup. Cart., and Sup. Cens. The results show two entries for the same location in Rome (RM).
- Cartografia di base:** A sidebar on the right containing various map layers and settings, including Livelli and Tematismi. It includes options for Grafia Stradale, Ortofoto, Terreno, and Catasto, as well as checkboxes for Particelle, T. Testi, Fabbricati, Acque e Strade, Zone OMI, and Confini Amm. - ISTAT.

The bottom of the interface shows the location coordinates: Roma (RM) - Lazio, WGS84 ETRF2000 - Lat: 41.899248 Long: 12.467382.

Catasto	Comune	Cod. Com.	Sez. Urb.	Foglio Mappale	Destinazione	Sup. Cart.	Sup. Cens.
T	ROMA (RM)	HS01	A	485 150	Urbana	1.123	1.120
F	ROMA (RM)	HS01	-	485 150	Residenziale generico promiscuo	-	-

1. Structure and Contents of the Italian Cadastral System

INFORMATION, SEARCH AND DOWNLOAD SERVICES: Online Channel

ACCESS THROUGH «SISTER» PORTAL

<http://sister.agenziaentrate.gov.it/>

Signing of an AGREEMENT to join the service
(15 Euros / year for each enabled password)



User



Descriptive documents, current
and historical situation



Over the whole national territory
Different search keys

- Owners
- Cadastral identifiers
- Addresses

PLANS *



•Only for subjects enabled to the online
submission of cadastral updating documents

MAP ABSTRACTS

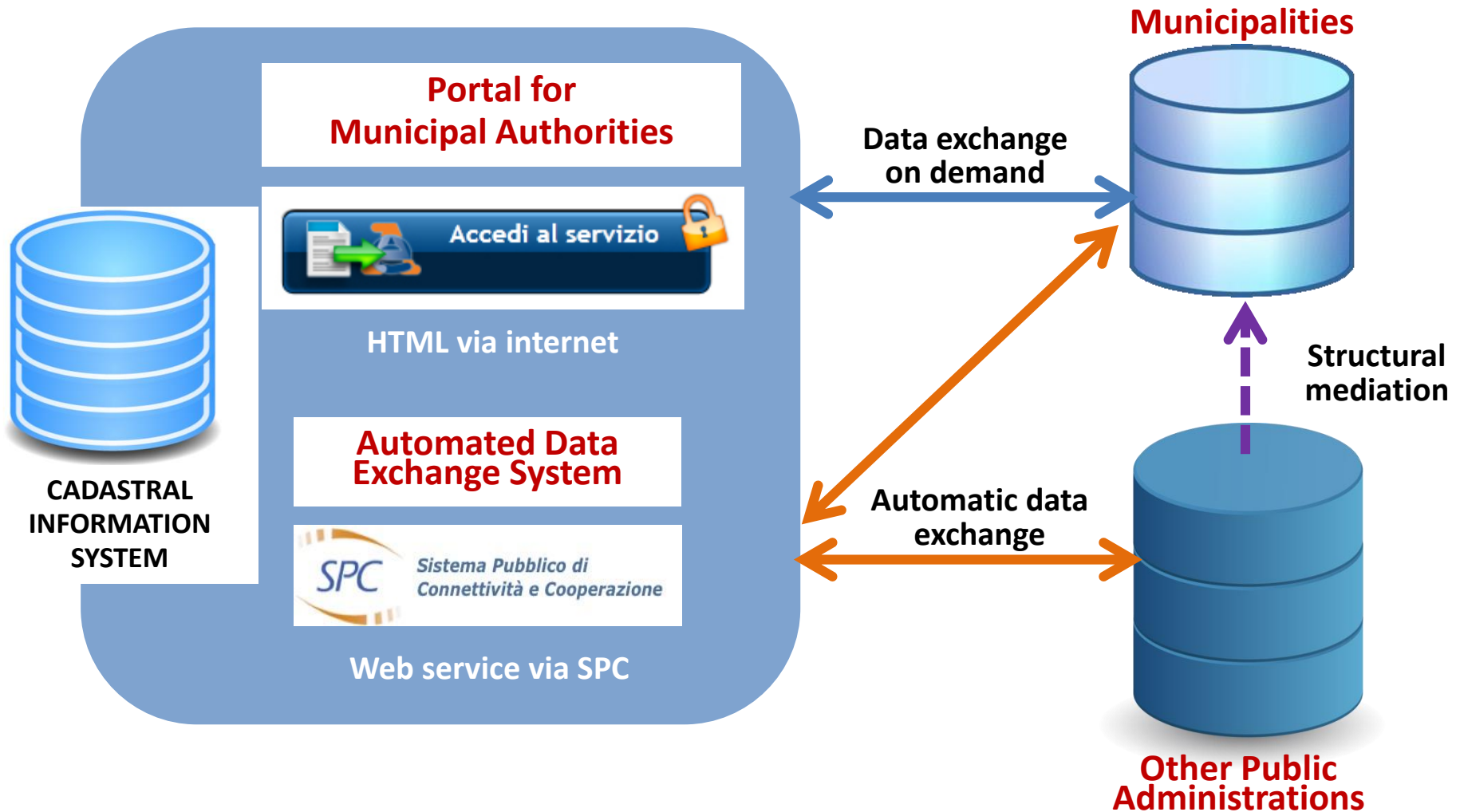


new

Since 2014 it is possible to buy - through the «Sister» channel - the **descriptive documents** in a format **suitable to be processed** and the **map sheets**. This will be especially helpful for public bodies and private professionals, which will have their operational range increased

1. Structure and Contents of the Italian Cadastral System

DATA SHARING AMONG AdE - Municipalities and other Public Administration



ITALIAN CADASTRAL SYSTEM

*Innovative ways in the management and use of the Italian
Cadastral Cartography*

Agenda

1

Structure and Contents of the
Italian Cadastral System



2

The Italian Cadastral Cartography

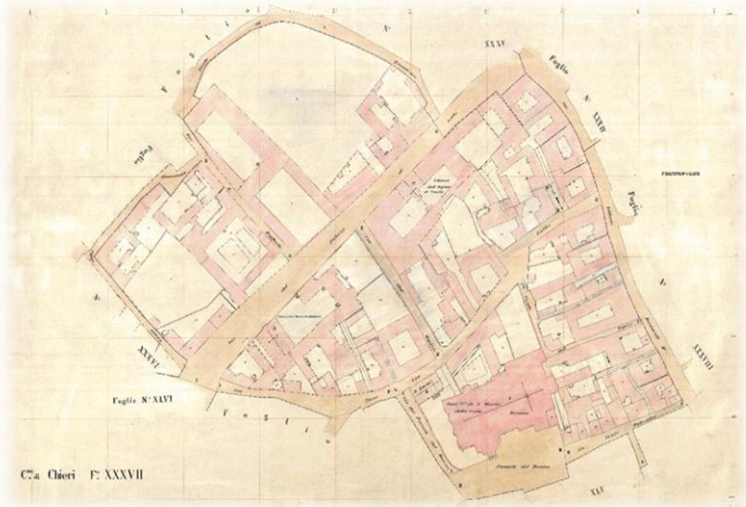


3

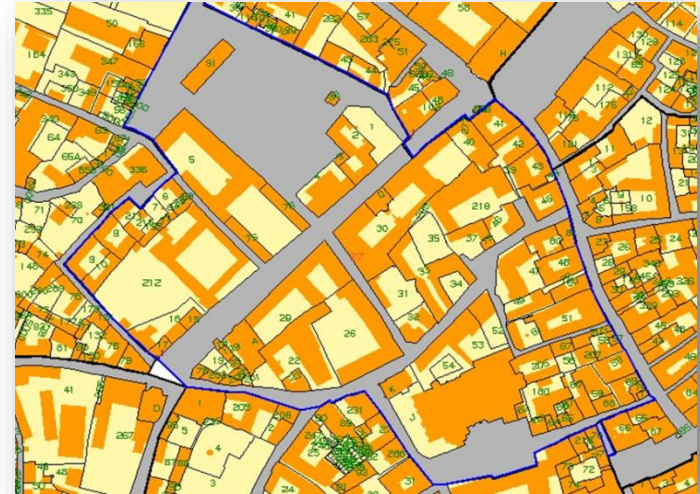
Interoperability services
concerning Cadastral Cartography



2. The Italian Cadastral Cartography



Original paper map sheet



Map in "vector" format

The cadastral cartography, today wholly available in vector format, is managed through a single GIS application, called WEGIS (Web Enable Gis), throughout the national territory, which operates in a web environment.

The above mentioned application software's functions make it possible to query cartographic databases, provide users (technical professionals, citizens) with abstracts of cadastral vector maps upon request, update cadastral cartography in vector format either through its digitalization functions or by supplementing updating documents submitted by technical professionals

2. The Italian Cadastral Cartography

CADASTRAL CARTOGRAPHY in the context of the geographical data

National authorities providing geographical data in Italy				
Law n° 68/1960	1	I.G.M.	Military Geographic Institute	Small scale cartography
	2	I.I.M.	Navy Hydrographic Institute	Maritime cartography
	3	C.I.G.A.	Air Force	Airport obstacles map
	4	A.d.E.	Cadastre	Large scale map
	5	I.S.P.R.A.	Geologic Service	Geologic small scale cartography

Military bodies

Furthermore

- **Regions:** provide medium scale cartography (1:5.000 – 1:10.000)
- **A.G.E.A.:** provides aerial images (GSD 20 cm) – updating every 3 years over 1/3 national territory

GSD: Ground Sampling Distance

2. The Italian Cadastral Cartography

HISTORICAL INFORMATION: the system
before the unification of Italy (1861)

**A VERY FRAGMENTED AND
DISOMOGENEOUS SITUATION**

22 DIFFERENT CADASTRAL SYSTEMS

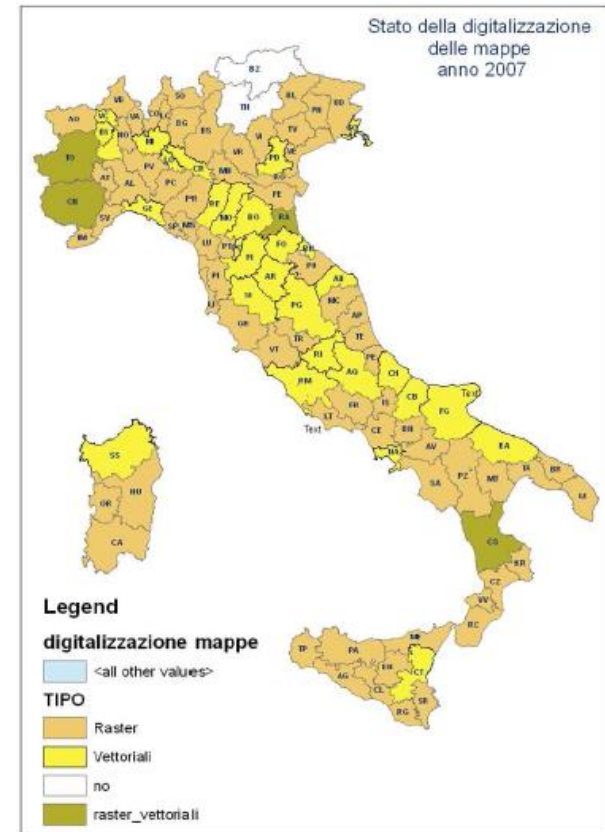
8 based on geometrical data
14 based on descriptive data



2. The Italian Cadastral Cartography

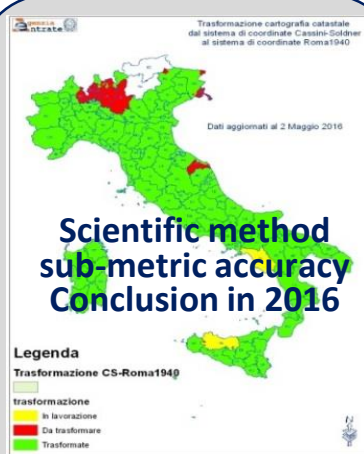
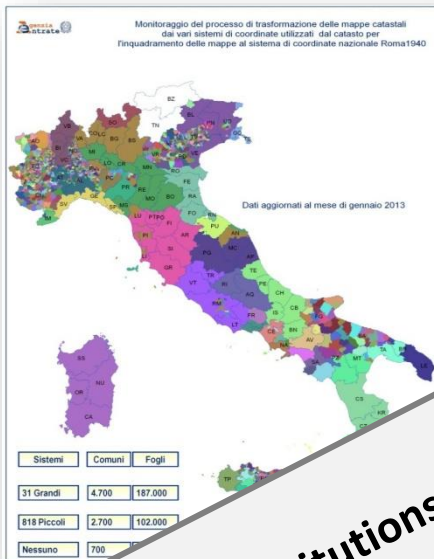
THE COMPUTERIZATION OF CADASTRAL CARTOGRAPHY

- Starting from 80's processes and rules for the digitalization of the maps were realized; precisely the digitalization of transparent plastic templates with prior updating from the paper copies
- At the end of 90's the situation was as shown in the picture beside: 30 provincial offices with vector format maps, 67 with paper maps, 4 with a mixed situation
- In 2000 the Italian Cadastre opted for using the paper copies in raster format digitized by A.G.E.A. that had used 100 dpi resolution roller scanner
- From 2000 to 2007 the cartographic system was managed in mixed format : totally vector in some offices, raster/vector in other ones
- In the years 2007/2008, for the operations related to «*Buildings not declared to the Cadastre*» operations, the digitalization of the maps, using paper copies raster images provided by A.G.E.A., was concluded



2. The Italian Cadastral Cartography

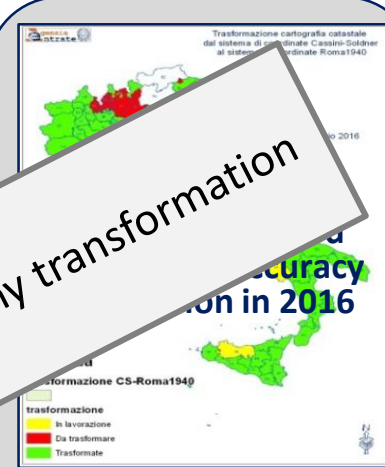
1° Step:
From cadastral systems
to the national system
Roma1940



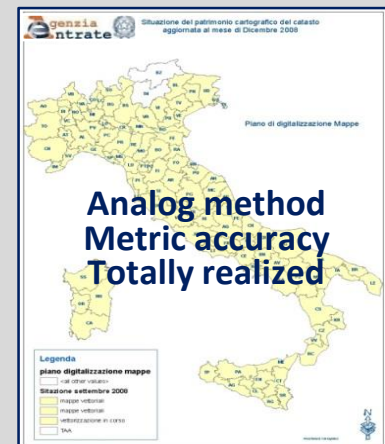
**Roma1940
coordinate**

**Analog method
Metric accuracy
Totally realized**

2° Step:
From the national system
Roma1940
to the global ETRF2000
In execution of European
Directive INSPIRE
D.P.C.M. 10/01/2004



**ETRF2000
coordinate system**



**Analog method
Metric accuracy
Totally realized**

EFFECTS

✓ for Institutions: Cadastre-IGM joined service about cadastral cartography transformation
✓ for Professionals: ETRF2000 map extracts

**MILITARY GEOGRAPHIC
INSTITUTE**

**Trasformazione
matrix**

2. The Italian Cadastral Cartography

THE CARTOGRAPHIC SYSTEM OF ITALIAN CADASTRE TODAY



**It is complete and homogeneous
all over the nation**



It is based on high-scale maps

**240.000 maps scale 1:2000
30.000 maps scale 1:1000
30.000 maps scala 1:4000**



**It's available in every coordinate systems in charge in Italy :
Cadastral (Cassini-Soldner) – National (Roma1940 Gauss-Boaga) - Global
(WGS84 - ETRF2000). Furthermore is interoperable with all kind of geographic
data external to the Cadastral field**

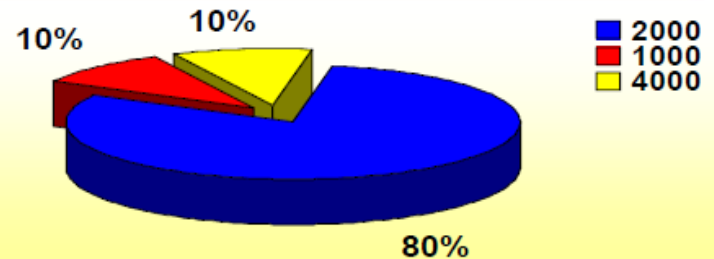


**It is directly related to the administrative census DB of the Land Cadastre
through a unique identifier: the parcel number**



**It is integrated with a high resolution ortho imagery (GSD 20 cm) and National
road maps**

**It is totally managed in
vector format**



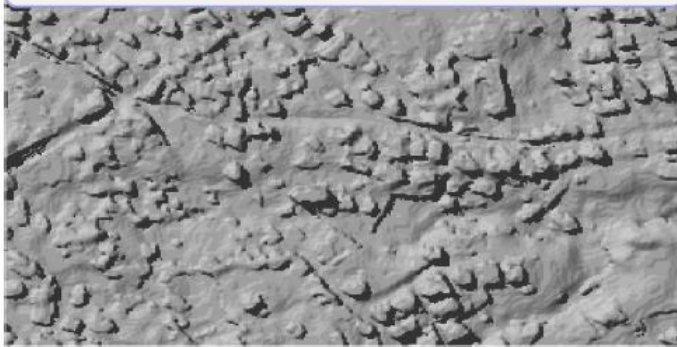
■ 2000
■ 1000
■ 4000

2. The Italian Cadastral Cartography

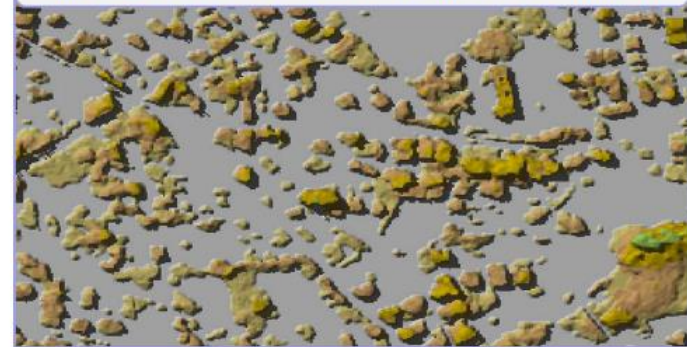
STRATEGICAL PROJECT BASED ON CADASTRAL CARTOGRAPHY FOR THE FIGHT AGAINST TAX EVASION

Automatic identification of buildings not declared to cadastre

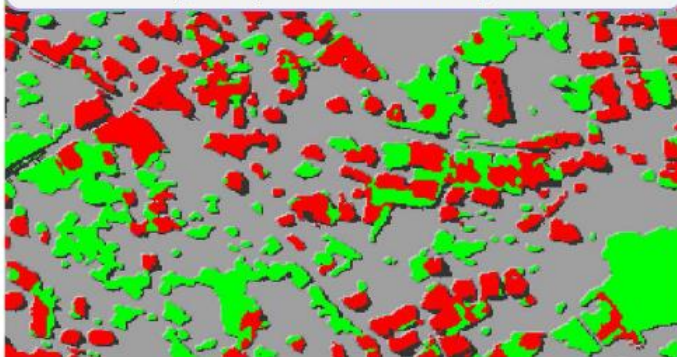
Elevation Surface Model (ESM)



Classification of objects aboveground based on height



Classification of buildings (red) and vegetation (green) with infrared images



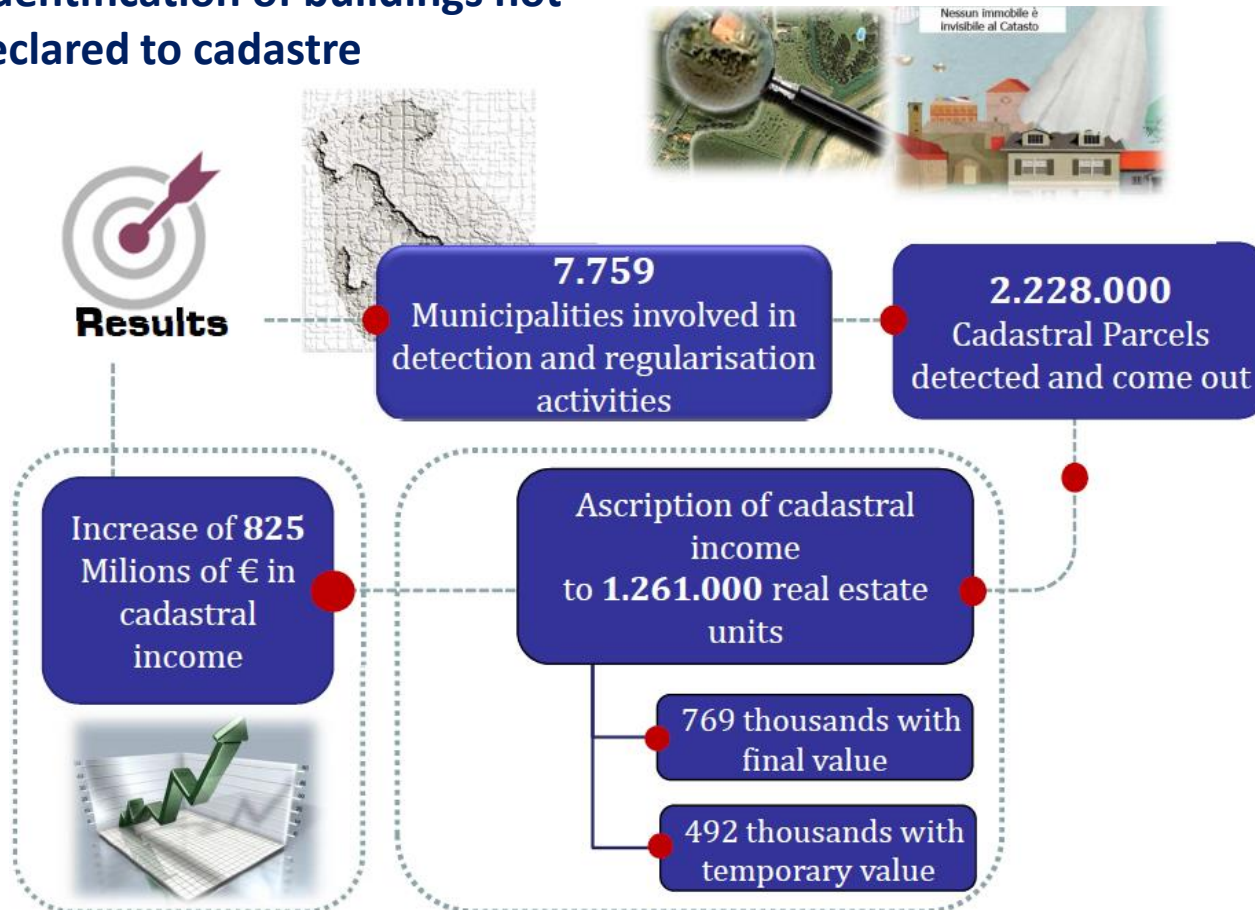
Automatic identification of buildings not present on the cadastral map



2. The Italian Cadastral Cartography

STRATEGICAL PROJECT BASED ON CADASTRAL CARTOGRAPHY FOR THE FIGHT AGAINST TAX EVASION

Automatic identification of buildings not
declared to cadastre



ITALIAN CADASTRAL SYSTEM

*Innovative ways in the management and use of the Italian
Cadastral Cartography*

Agenda

1

Structure and Contents of the
Italian Cadastral System



2

The Italian Cadastral Cartography



3

Interoperability services
concerning Cadastral Cartography



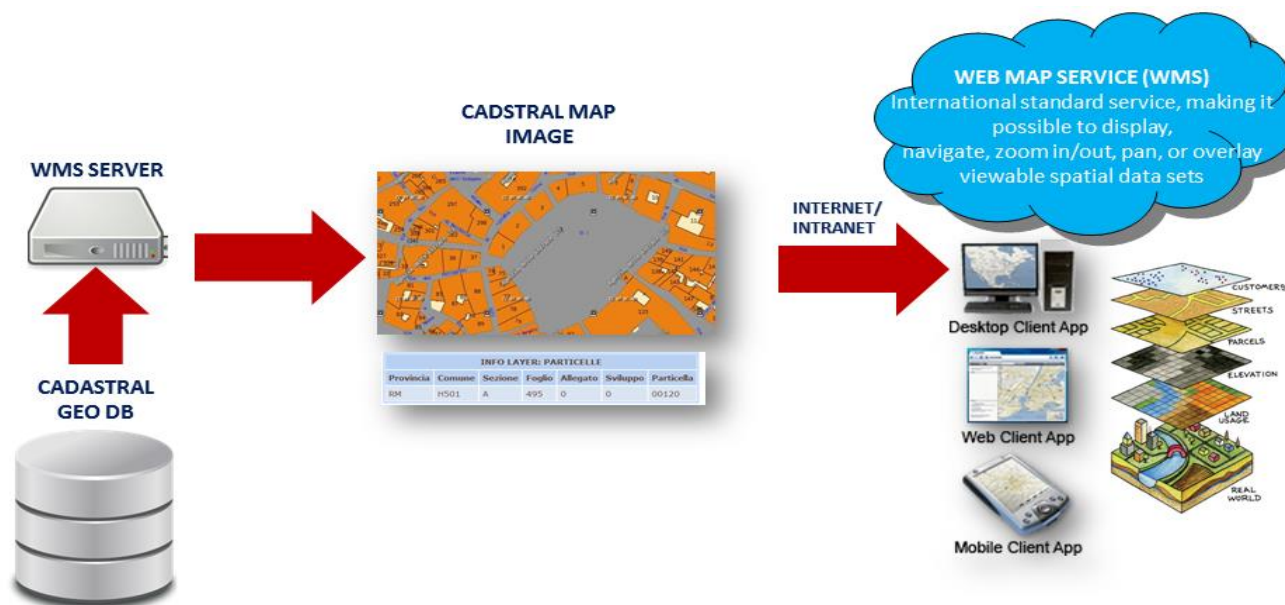
3. Interoperability services concerning Cadastral Cartography

Evolution of the Italian Cadastral Cartographic System: WMS Service

Disposition of the General Director of AdE 23th November 2017 n. 271542



Implementation of the Italian Legislative Decree 27th January 2010 n. 32, concerning the establishment of an Infrastructure for Spatial Information in the European Community (INSPIRE). View services of parcels data sets.

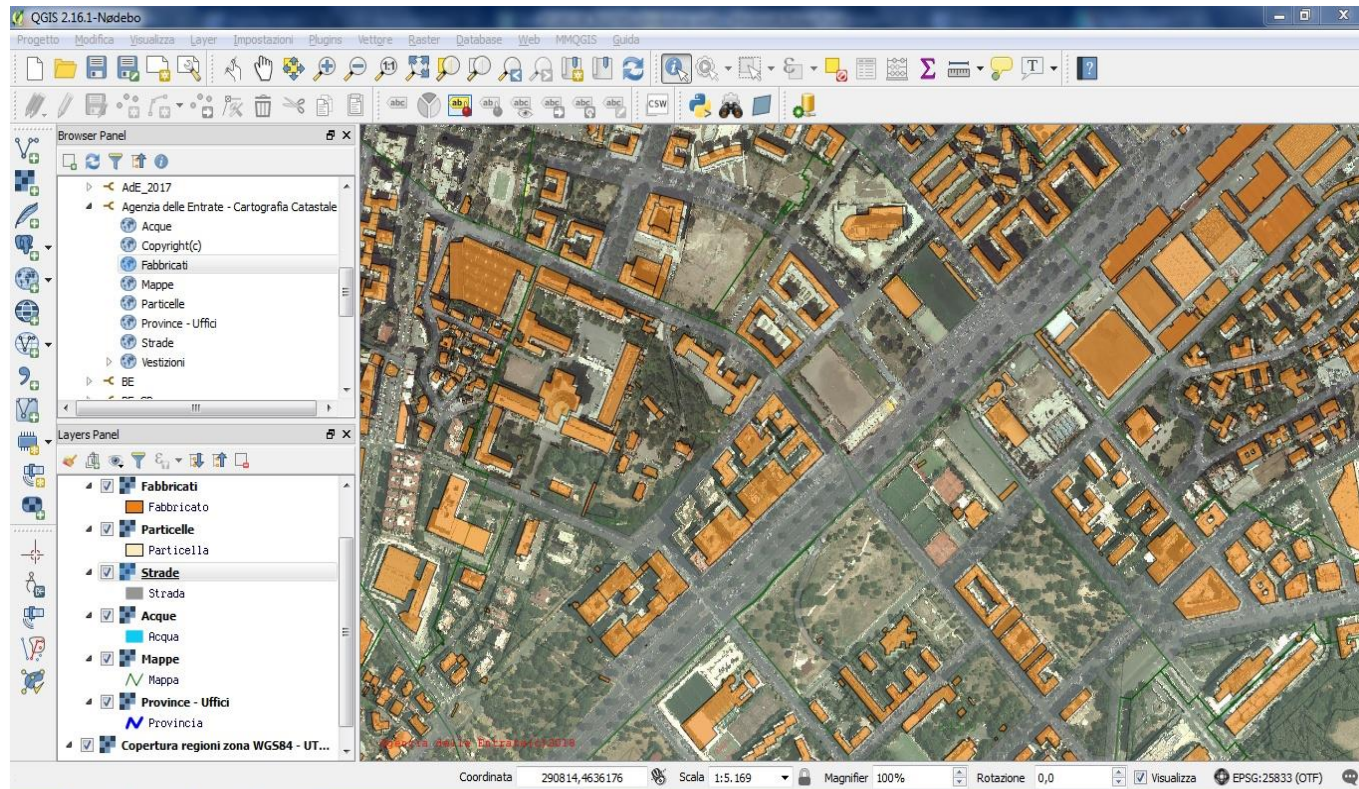


3. Interoperability services concerning Cadastral Cartography

INTEGRATED VIEW

Cadastral Maps (*WMS Service – Agenzia delle Entrate*)

Ortho-Images (*WMS Services - Ministry of the Environment and Protection of Land and Sea*)

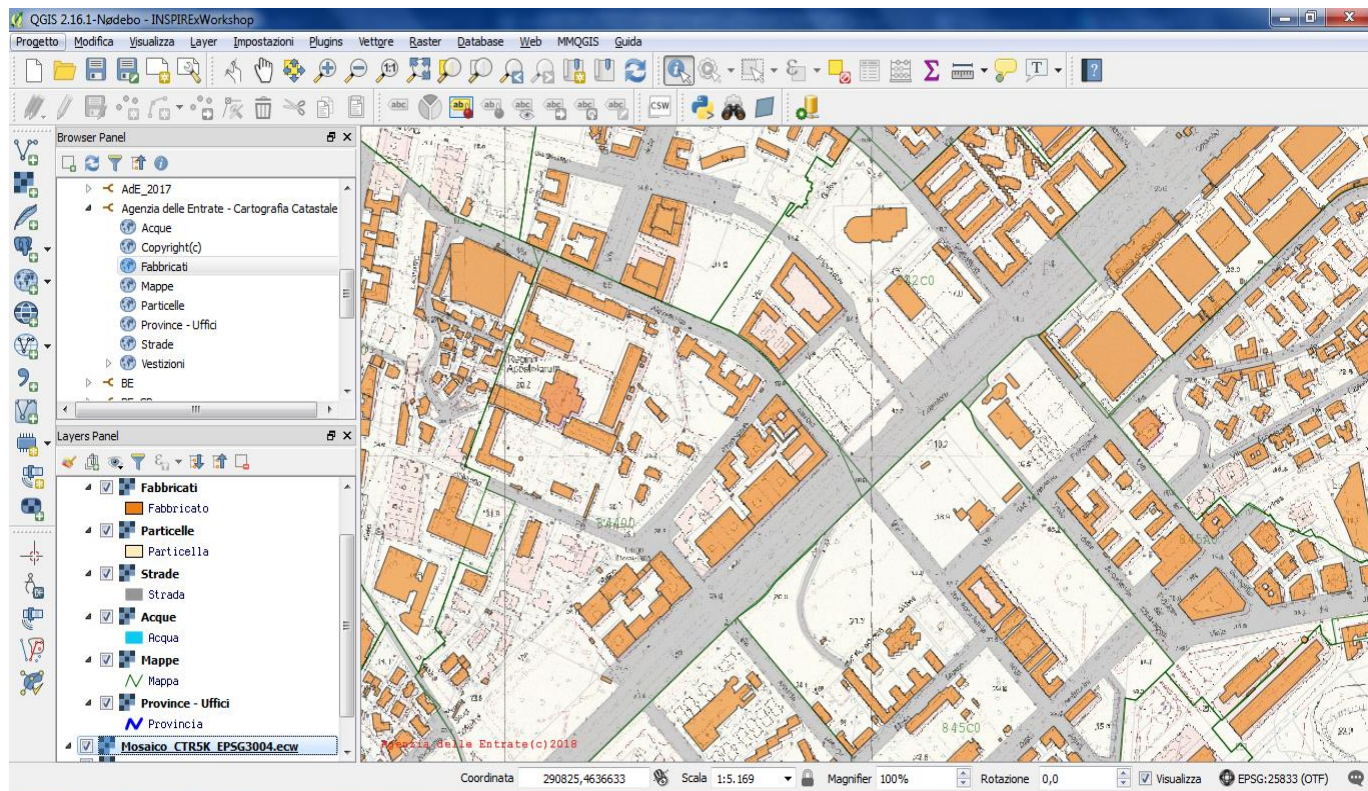


3. Interoperability services concerning Cadastral Cartography

INTEGRATED VIEW

Cadastral Maps (*WMS Service – Agenzia delle Entrate*)

Regional Technical Maps (*WMS Services – Lazio Region*)

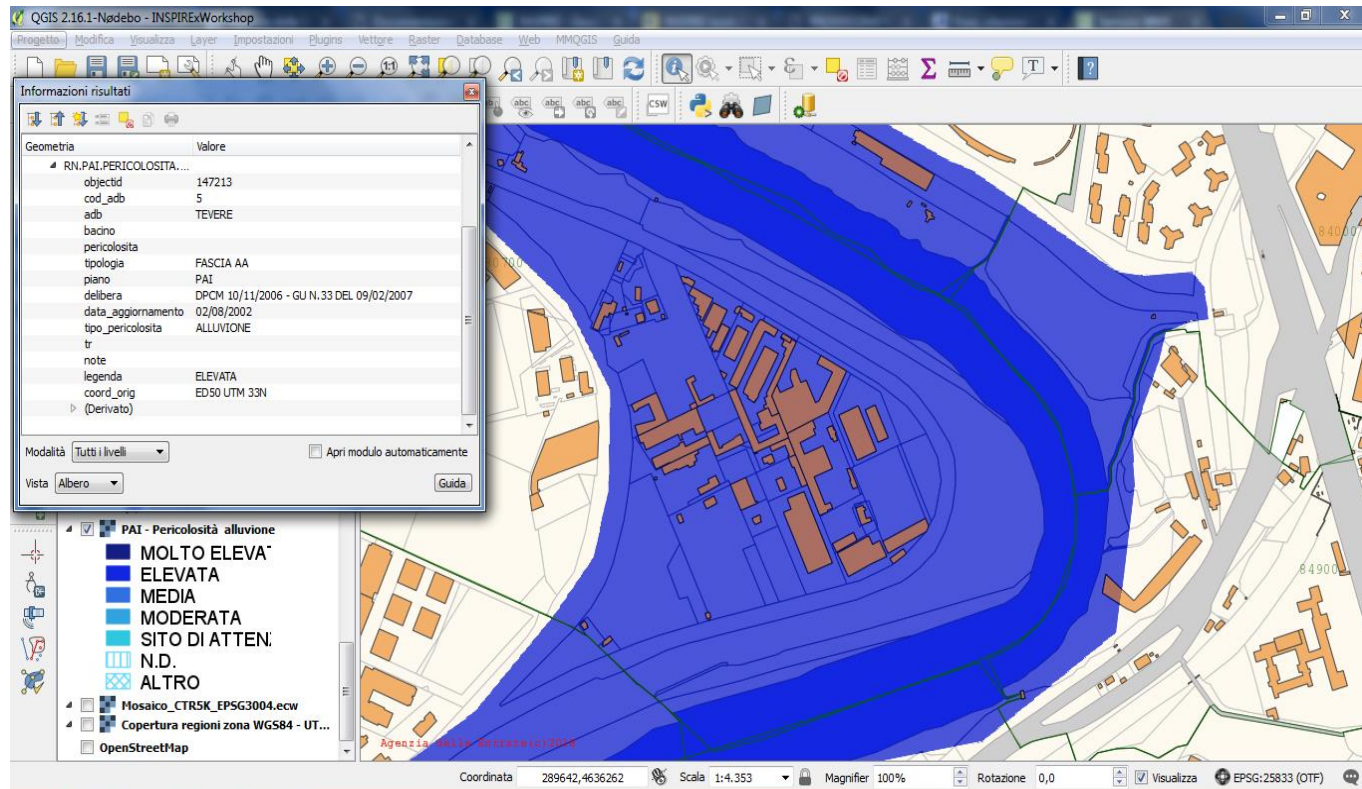


3. Interoperability services concerning Cadastral Cartography

INTEGRATED VIEW

Cadastral Maps (*WMS Service – Agenzia delle Entrate*)

Flood dangerousness Maps (*WMS Services - Ministry of the Environment and Protection of Land and Sea*)



3. Interoperability services concerning Cadastral Cartography

SEARCH AND SURFING SERVICES REGARDING CADASTRAL CARTOGRAPHY - WMS

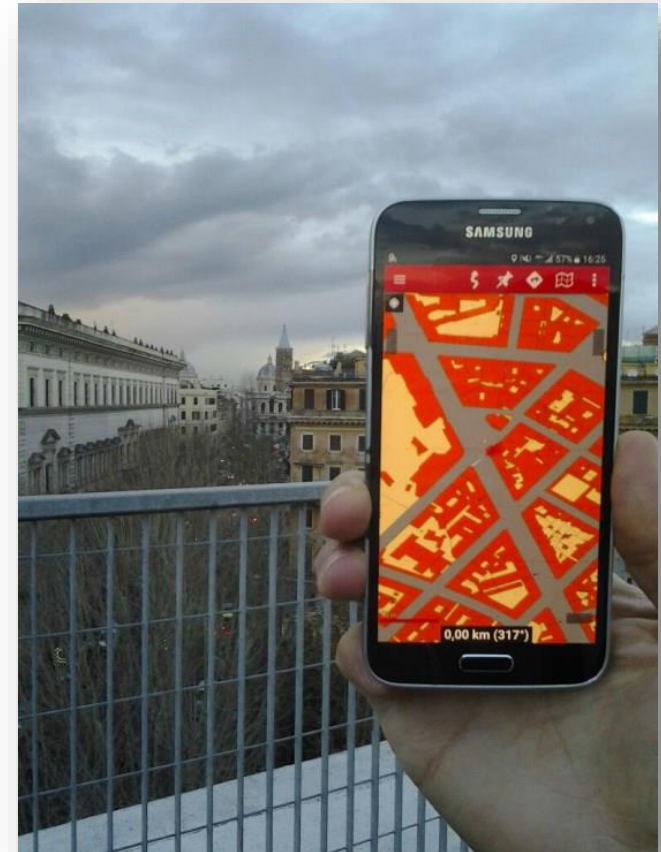
Possibility of using the WMS service through mobile devices
with satellite positioning on the cadastral map



Link to copy in the GIS software

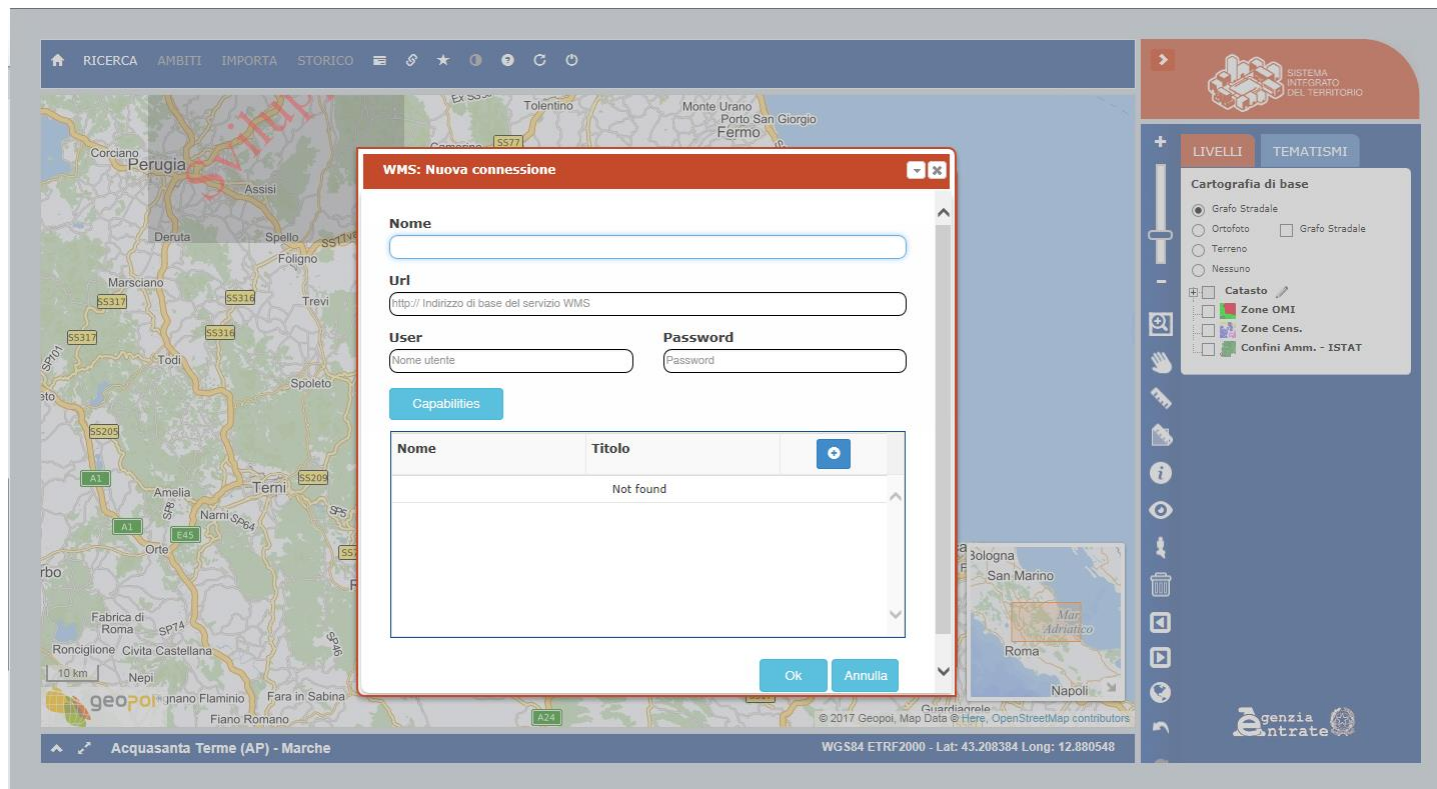
<https://wms.cartografia.agenziaentrate.gov.it/inspire/wms/ows01.php>

The WMS service is available for the whole national territory, except for the municipalities in which the cadastre is managed, by delegation of the State, by the autonomous provinces of Trento and Bolzano



3. Interoperability services concerning Cadastral Cartography

WMS SERVICES OF OTHER ADMINISTRATIONS IN THE "SIT" Thematic representation of damages caused by the earthquake



3. Interoperability services concerning Cadastral Cartography

WMS SERVICES OF OTHER ADMINISTRATIONS IN THE "SIT"

The damages caused by the earthquake in Central Italy – The 2016 and 2017

Epicentre position



Data	Ora locale (CEST/CET)	Magnitudo momento	Profondità ipocentro	Epicentro		
				Comune	Latitudine	Longitudine
24 agosto 2016	03:36:32	6,0	8 km	Accumoli	42,70 N	13,23 E
24 agosto 2016	03:37:26	4,5	9 km	Accumoli	42,74 N	13,26 E
24 agosto 2016	04:33:29	5,4	8 km	Norcia		
24 agosto 2016	13:50:30	4,5	10 km	Norcia		
26 agosto 2016	06:28:25	4,8	9 km	Amatrice	42,61 N	13,29 E
26 ottobre 2016	19:10:36	5,4	9 km	Castelsantangelo sul Nera	42,88 N	13,13 E
26 ottobre 2016	21:18:05	5,9	8 km	Ussita	42,91 N	13,13 E
26 ottobre 2016						
30 ottobre 2016						
30 ottobre 2016						
30 ottobre 2016						
30 ottobre 2016						
1° novembre 2016						
3 novembre 2016	01:35:01	4,7	8 km	Pieve Torina	43,03 N	13,05 E
18 gennaio 2017	10:25:40	5,1	9 km	Montereale	42,55 N	13,26 E
18 gennaio 2017	11:14:09	5,5	9 km	Capitignano	42,53 N	13,28 E
18 gennaio 2017	11:15:33	4,7	10 km	Capitignano	42,53 N	13,29 E
18 gennaio 2017	11:16:39	4,6	11 km	Capitignano	42,55 N	13,28 E
18 gennaio 2017	11:25:23	5,4	9 km	Pizzoli	42,49 N	13,31 E
18 gennaio 2017	14:33:36	5,0	10 km	Cagnano Amiterno	42,48 N	13,28 E

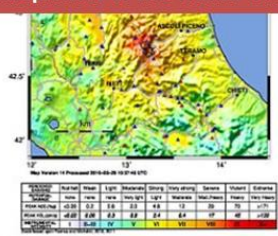
Shocks sequence

The number of events registered from 24th August 2016 to 23rd January 2017 was about 4,900

Scossa del 24 agosto 2016

INGV ShakeMap - Fucini

The shock destroys Amatrice and the Municipalities of the Tronto Valley



Scossa del 26 ottobre 2016

INGV ShakeMap - Marsica

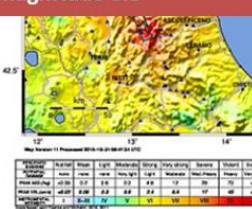
Two strong shocks at the Umbrian-Marche border



Scossa del 30 ottobre 2016

INGV ShakeMap - Perugia

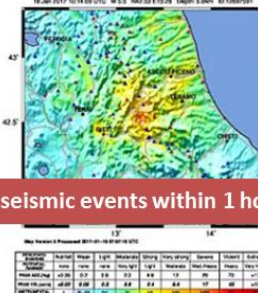
At 7.40 a.m. the strongest earthquake since 1980: magnitude 6.5



Scossa del 18 gennaio 2017

INGV ShakeMap - L'Aquila

3 seismic events within 1 hour

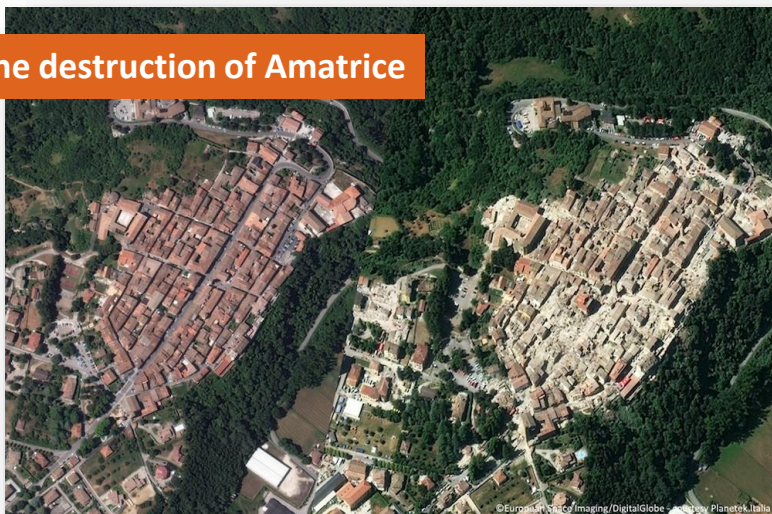


3. Interoperability services concerning Cadastral Cartography

WMS SERVICES OF OTHER ADMINISTRATIONS IN THE "SIT"

The damages caused by the earthquake in Central Italy – The 2016 and 2017

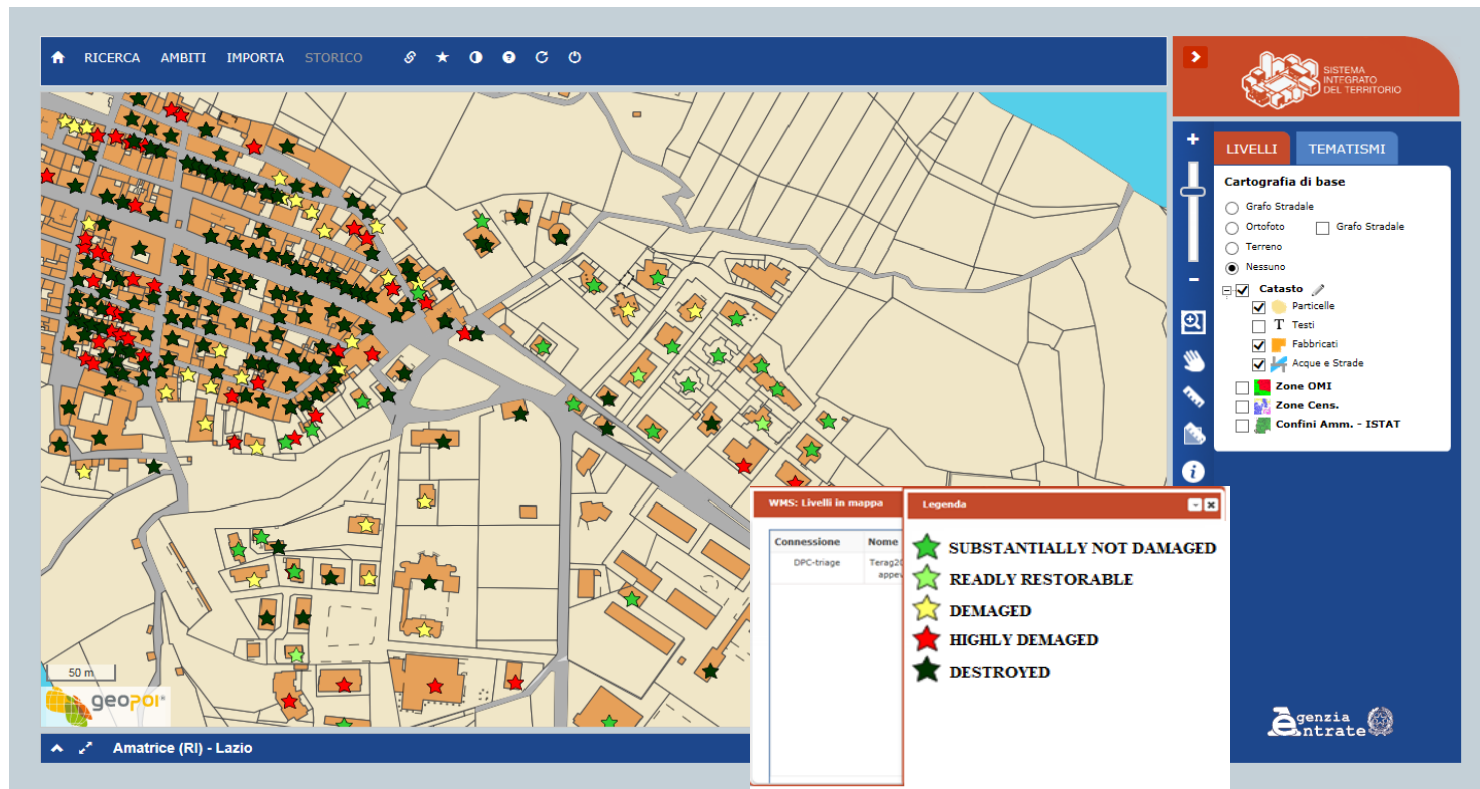
The destruction of Amatrice



3. Interoperability services concerning Cadastral Cartography

WMS SERVICES OF OTHER ADMINISTRATIONS IN THE "SIT"

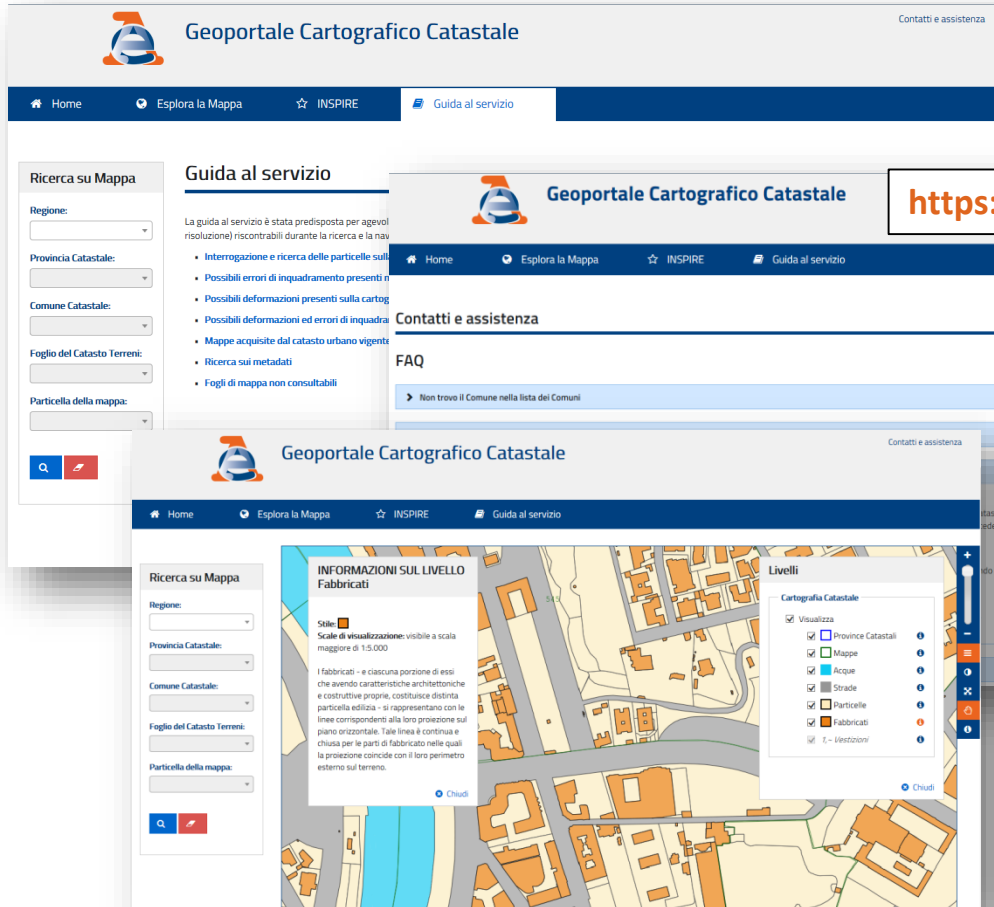
Thematic representation of damages caused by the earthquake in Central Italy –The 2016 and 2017 data coming from the Civil Protection



Service used to make more efficient the AdE cadastral activities

3. Interoperability services concerning Cadastral Cartography

SEARCH AND SURFING SERVICES REGARDING CADASTRAL CARTOGRAPHY



The CADASTRAL CARTOGRAPHIC GEO-PORTAL

<https://geoportale.cartografia.agenziaentrate.gov.it/>



FIGURA 8 - INFORMAZIONI CATASTALI

N.B.: le informazioni catastali vengono visualizzate a partire dalla scala 1:200,000; per scale precedenti, selezionando il bottone **B** apparirà il seguente pannello

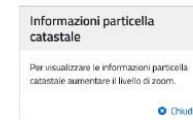


FIGURA 9 - INFO NON DISPONIBILI

Visibilità su mappa del risultato di ricerca

Il bottone **B** consente di evidenziare sulla mappa il risultato della ricerca effettuata; infatti, se selezionato, definisce in rosso lo sfondo dell'area di ricerca.

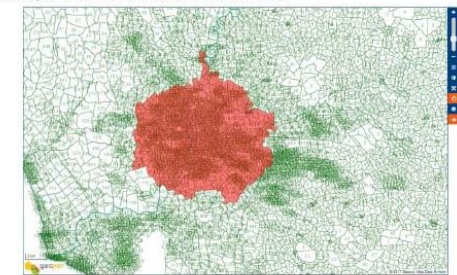


FIGURA 10 - VISIBILITÀ SU MAPPA ATTIVA

The CADASTRAL CARTOGRAPHIC GEO-PORTAL service is available for the whole national territory, except for the municipalities in which the cadastre is managed, by delegation of the State, by the autonomous provinces of Trento and Bolzano

3. Interoperability services concerning Cadastral Cartography

SEARCH AND SURFING SERVICES REGARDING CADASTRAL CARTOGRAPHY

The CADASTRAL CARTOGRAPHIC GEO-PORTAL

<https://geoportale.cartografia.agenziaentrate.gov.it/>

The geo-portal allows, for the whole national territory*, the search of a single cadastral parcel and its view on the cadastral map

(*) Except for the territory managed by the autonomous provinces of Trento and Bolzano

Eng. Franco MAGGIO
Central Director
for Cadastral, Cartographic and Land Registration Services

Many thanks for your kind attention